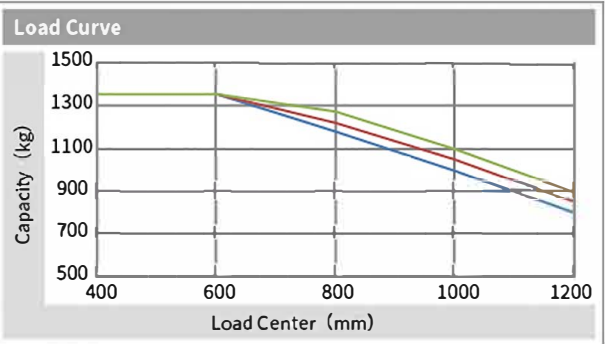
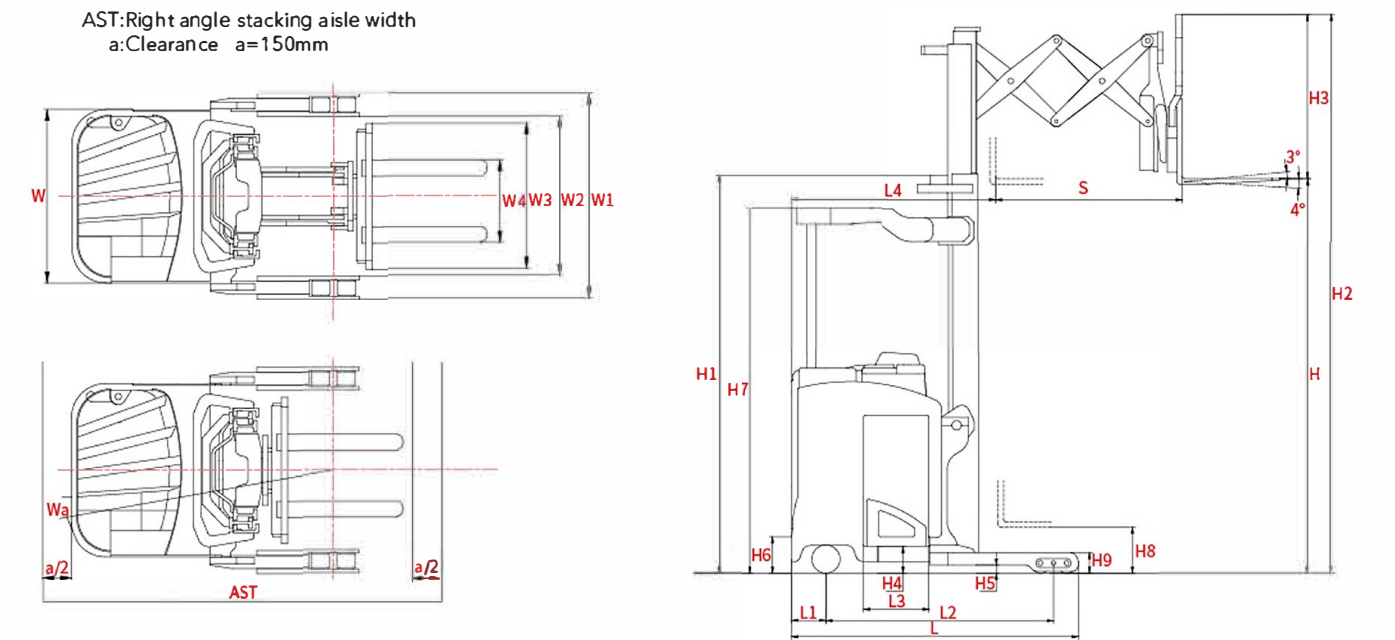


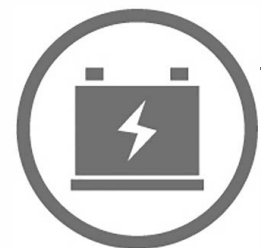


OPTIONAL STRADDLE WIDTH										
Straddle inside width W2	mm	845	915	966	1008 (standard)	1068	1119	1170	1221	1272
Straddle outside width W1	mm	1137	1207	1258	1300 (standard)	1360	1411	1462	1513	1564

WIDE VIEW FULL FREE 3-STAGE MAST									
Mast model	Fork Height (mm)	Free lift (mm)	Mast height (mm)	Load Capacity (kg)			Service Weight, Un (kg)		
	CQD14X2-GA2R CQD14X2-GB2R CQD14X2-GC2R	CQD14X2-GA2R CQD14X2-GB2R CQD14X2-GC2R	CQD14X2-GA2R CQD14X2-GB2R CQD14X2-GC2R	CQD14X2-GA2R	CQD14X2-GB2R	CQD14X2-GC2R	CQD14X2-GA2R	CQD14X2-GB2R	CQD14X2-GC2R
ZSM502	5025	1390	2426	1350	1350	1350	3580	3748	3904
ZSM533	5330	1490	2526	1350	1350	1350	3600	3768	3924
ZSM610	6095	1745	2781	1200	1200	1200	3670	3838	3994
ZSM685	6855	2000	3036	1000	1000	1000	3720	3888	4044
ZSM762	7620	2285	3321	800	900	900	3790	3958	4114



NOTE: The vertical axis is the load capacity, and the horizontal axis is the load center which is calculated from the front face of the forks to the load center of gravity. Capacity curves shown are for a standard mast at zero degree tilt with standard forks. Changing mast tilt, using non-standard forks or loading large goods can affect load capacity. This chart can be used to estimate load capacity at various load centers for standard masts. Contact HELI for specific load ratings for your situation.



## RENEWABLE ENERGY TECHNOLOGIES

With the use of the excellent load-sensing steering system and AC controlling renewable energy technologies, the forklift is more energy-saving and the working hour of the battery is extended by 15%.



15%

Certifications: These HELI models are CE&CQC certified and also meet all requirements of ANSI B56.1-2012 and OSHA Regulation 29CFR1910.178. All dimensional and performance specifications shown are for reference and subject to change without notice.

# HELI

The reliable special instrument gives a complete display of the vital information, like operation status, fault detection, etc. It ensures the operator predominate the vehicle status more intuitive and convenient.



ZAPI intelligent display

**FORKLIFTS  
DIRECT**  
Adelaide - Brisbane - Melbourne - Perth - Sydney

Forklifts Direct  
P: 1300 595 932  
E: sales@forkliftsdirect.com.au  
W: www.forkliftsdirect.com.au  
Head Office: 8c McGowan Street, Pooraka 5095

Design&Print&Export&Print&Export 20201126

# HELI

## 1.35 t G Series Electric Pantograph Reach Truck (Deep Reach)



MANUFACTURER'S DATA AND DESIGN CHARACTERISTICS					
Characteristics					
1.01 Manufacturer			HELI		
1.02 Model			CQD14X2	CQD14X2	CQD14X2
1.03 Configuration number			GA2R	GB2R	GC2R
1.04 Load capacity	Q	kg	1350	1350	1350
1.05 Load center distance	C	mm	600	600	600
1.06 Power model			Battery	Battery	Battery
1.07 Driving model			Stand-on	Stand-on	Stand-on
1.08 Wheel base	L2	mm	1557	1593	1655
1.09 Voltage	V		36/48	36/48	36/48
Tyre					
2.01 Tyre type			Polyurethane	Polyurethane	Polyurethane
2.02 Wheel number, drive/load/caster (2 with two wheel)			1 × /4/2	1 × /4/2	1 × /4/2
2.03 Wheel size, load		mm	Φ 127 × 95	Φ 127 × 95	Φ 127 × 95
2.04 Wheel size, drive		mm	Φ 330 × 140	Φ 330 × 140	Φ 330 × 140
2.05 Wheel size, caster		mm	Φ 178 × 76	Φ 178 × 76	Φ 178 × 76
Dimensions					
3.01 Lift height	H	mm	5330	5330	5330
3.02 Free lift	H8	mm	2526	2526	2526
3.03 Mast height, lowered	H1	mm	1490	1490	1490
3.04 Fork size, thickness/width/length	s/e/l	mm	35 × 100 × 920	35 × 100 × 920	35 × 100 × 920
3.05 Fork adjusting width	W4	mm	244-724	244-724	244-724
3.06 Tilt	°		3° /4°	3° /4°	3° /4°
3.07 Fork sideshifting		mm	± 50	± 50	± 50
3.08 Truck body length (fork excluded)	L	mm	1954	1990	2052
3.09 Truck body width	W	mm	1090	1090	1090
3.10 Fork carriage width	W3	mm	842	842	842
3.11 Reach distance	S	mm	1080	1080	1080
3.12 Height of overhead guard	H7	mm	2320	2320	2320
3.13 Battery bottom clearance	H4	mm	180	180	180
3.14 Straddle clearance	H5	mm	50	50	50
3.15 Straddle height	H9	mm	130	130	130
3.16 Step height	H6	mm	250	250	250
3.17 Minimum turning radius	Wa	mm	1838	1874	1936
3.18 Drive wheel center to truck body rear distance	L1	mm	252	252	252
3.19 Fork front to truck body rear distance	L4	mm	1529	1565	1627
3.20 Aisle width with pallet 1200Lx1200W	As	mm	2935	2971	3033
3.21 Aisle width with pallet 1000Lx1000W	As	mm	2713	2749	2811
Performance					
4.01 Travelling speed, with/without load		km/h	10/11	10/11	10/11
4.02 Lifting speed, with/without load		mm/s	330/520	330/520	330/520
4.03 Lowering speed, with/without load		mm/s	500/500	500/500	500/500
4.04 Reach speed, with/without load		mm/s	110/150	110/150	110/150
4.05 Maximum climb capability, with/without load		%	10/15	10/15	10/15
Weight					
5.01 Total weight (without battery)		kg	2750	2770	2790
5.02 Axle loading, no load (front/rear)		kg	1379/2221	1443/2325	1530/2394
5.03 Axle loading, loaded (front/rear)		kg	3010/1940	3112/2006	3164/2110
Battery					
6.01 Battery voltage/capacity k5	V/Ah		36/770, 48/550	36/880, 48/660	36/990, 48/770
6.02 Minimum battery weight	kg		1066	1270	1406
6.03 Minimum battery weight	kg		839	998	1134
6.04 Battery department size	mm		1005x428x810	1005x465x810	1005x527x810
Motor and controller					
7.01 Driving motor power		kw	7	7	7
7.02 Lifting motor power		kw	15	15	15
7.03 Steering motor power		kw	0.6	0.6	0.6
7.04 Type of driving control			MOSFET/AC	MOSFET/AC	MOSFET/AC
7.05 Type of lifting control			MOSFET/AC	MOSFET/AC	MOSFET/AC
7.06 Type of steering control			MOSFET/AC	MOSFET/AC	MOSFET/AC
7.07 Transmission box			HELI special	HELI special	HELI special
7.08 Service brake			Electric	Electric	Electric
7.09 Parking Brake			Automatic	Automatic	Automatic
7.10 Hydraulic system working pressure		Mpa	21	21	21

NOTE: For detailed information about battery, please contact your authorized HELI dealer.  
These are "Zero Clearance" aisles in the table and require an additional 150mm or more to be added to provide for easier maneuvering.



## G SERIES 1.35 t

### Comfortable

- djustable backrest and armrest help reduce fatigue
- Integrated, Intelligent control handle is convenient and comfortable to use
- With proportional hydraulic control, working is more stable and more precise
- Electronic power steering offer easy, flexible, high efficient and quite operation
- Steering is centers itself automatically on startup for a safer operation

### Safety

- HELI's Intelligent control system automatic decelerates in sharp turns for safer opterion
- Warning light and drive OPS system come standard to ensure complete truck safety
- Parking brake is automatically applied on a slope or flat surface via a magnetic brake on the drive axle
- Five independent braking systems provide maximum, safe braking
- Regenerative braking provides extra power back to the electrical system releasing when the control handles is released
- Emergency brake is activated by releasing foot pedal
- Parking brake can also be activated by pressing button on the panel
- Parking brake automatically activated when operator leave truck
- Emergency stop switch disengages power and applies brake automatically

### Working efficiency

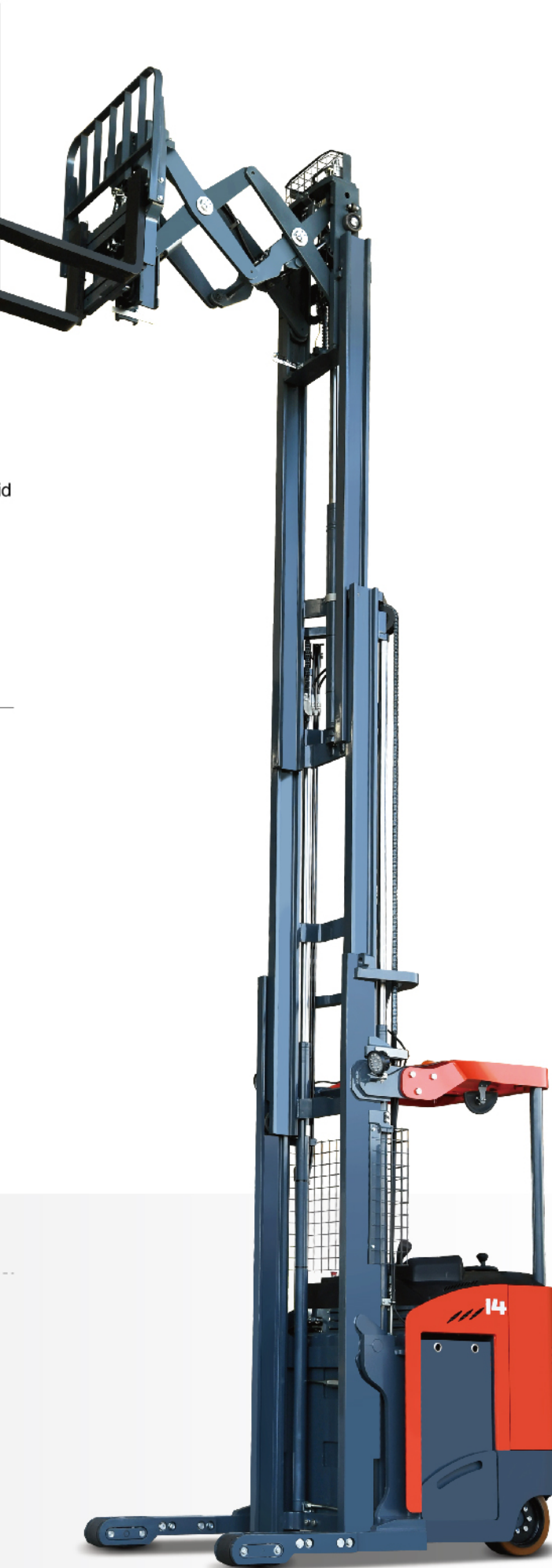
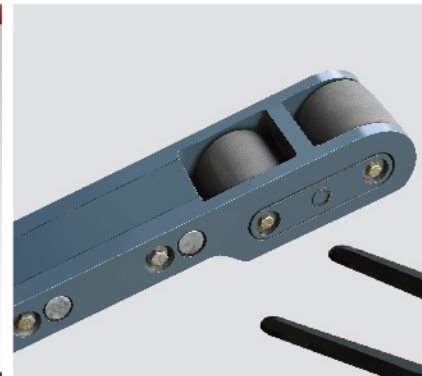
- Small turning radius makes steering flexible and easy
- Smaller load wheels easier to maneuver into the bottom of the shelf
- With optimal driving and lifting speeds, better working efficiency can be achieved
- With HELI's three speed modes, higher performance can be achieved
- Larger battery capacity for longer single shift time
- Bettering loading capacity and stability at higher lift heights

### Energy efficiency

- With proportional controls, the truck is more energy efficient and has lower energy consumption
- All LED lights reduce lighting energy consumption by 80%
- Drive motor regenerative braking recycles more electric energy
- Electronic steering is more efficient saving energy

### Maintainability

- Door, top cover and front all can be removed easily to allow great access to all chassis components for quick and easy maintenance
- With bolt type load wheel box installation, outrigger&load wheel maintenance are convenient and less costly



### Wide view mast and pantograph

- Comes standard with shift, tilt and reach funtions
- Newly designed wide-view mast and pantograph maximize operator's view effectively when forks are retracted and extended
- Lift cylinder has end stroke cushions, while the controller provides in transit butters to ensure smooth lifting and lowering funtions
- The controller also provides in transit and end stroke butters for smooth the fork retract funtion



### Comfortable operator's compartment

- Comfortable step height provides ease of access to operator's compartment while providing safety from the risk of pallet truck forks tip intrusion
- Padded waist and arm supports for operator's comfort
- Cushioned floorboard helps reduce operator for fatigue
- The operator's body is fully protected within the truck contours

### Overhead guard

- The large arc shape of the overhead guard and properly angled grid slats greatly increase operator's upward view
- Rear leg connected to the chassis suspension, provide shock buffering from falling loads
- Without front legs, work view is improved

### Operator display panel

- High quality meter displaying clearly the important operating data
- 180° steering angle position display
- Display of battery power and fault code
- Working mode selection
- Hour meter
- Labor hour display

#### Standard configuration

AC travelling motor  
AC lifting motor  
AC steering motor  
ZAPI travelling motor controller  
ZAPI lifting motor controller  
ZAPI steering motor controller  
Electromagnetic brake  
DC/DC converter  
Low noise gear pupm  
Electromagnetic proportional valve  
5330mm three stage full free lift mast  
integral pantograph

Standard fork  
Overhead guard  
Load backrest  
Polyurethane tire  
LED combined display  
Front work light  
LED warning light  
Automatic steering slow down device  
Automatic Packing brake  
Operator's tool kit  
Adjustable armrest  
Adjustable backrest

#### Optional device

Three-stage full free lift mast(other lifting height)  
Fork extension  
Lifting height pre-selector  
Monitoring system  
Other battery  
Germany HOPPECKER battery  
Italy FAAM battery  
Battery charger  
Custom paint  
Operator protection guard