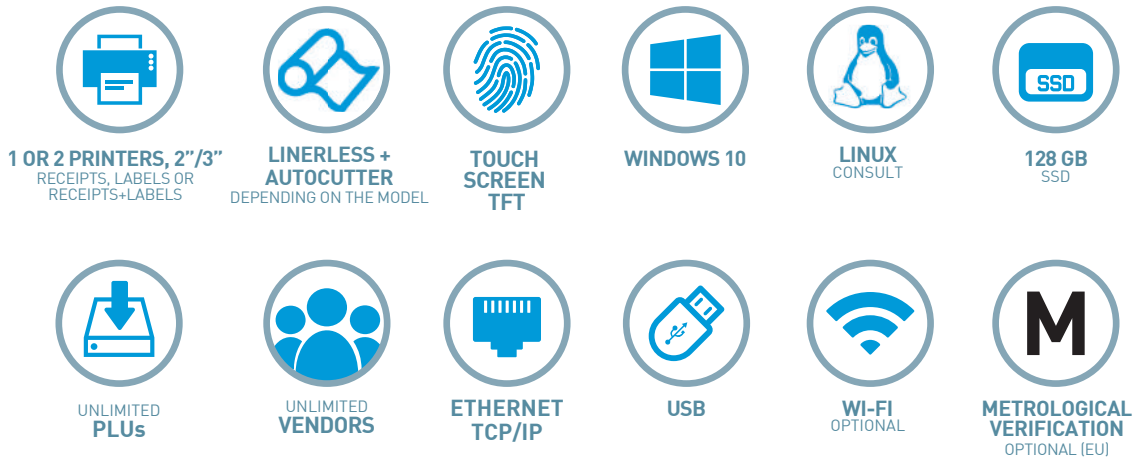


PC SCALES

CS-2200 series





Characteristics and functionality

Main characteristics

- High performance retail PC based scale with double colour TFT (one in self-service format).
- Models with receipt printer, label printer (suitable for receipts, depending on the model) or with 2 printers (for receipts and labels).
- Printers of 2" or 3", depending on the format.
- Variety of formats.
- Modern, compact and easy to clean design.
- Intuitive operation.
- Configurable and customizable vendor screen.
- More dynamic and stylish buyer screen as an advertising tool.
- Compliance with EU Regulation 1169/2011 on the provision of food information to consumers.

Features

- Open to run third parties Windows IT applications and ERP systems.
- Available functions with CS SERIES Windows software pre-installed:
 - > User screen design application (for assisted and self-service sales). Each user may have access to his/her own sales templates, which may be associated with previously defined access permissions.

- > Wide range of templates for sales screens, articles database and food images (meat/butcher, fruits/vegetables, fish/shellfish, frozen food, drinks, etc.).
- > Modern, simple and intuitive operating screens that facilitate the use and improve the experience of the seller.
- > Cross-selling: showing the picture of a complementary product on buyer display when selling a product.
- > Library of images and videos included in the scale for promotional support.
- > Unlimited article keys (in consecutive screens).
- > All the keys can include texts, icons, pictures, etc.
- > Possibility of automatic ordering of the keys by different criteria: code, name, best sellers, etc.
- > Configurable keyboard by PLUs, sections, vendors, QWERTY or ABC keyboard, etc.
- > Quick access to register articles, sellers and sections.
- > Quick change of the document to be generated: delivery note, receipt or simplified invoice.
- > Optional display of the receipt or label on the screen.
- > Easy cancellation of receipt lines / easy reopening of receipt.
- > Easy cancellation of lines in receipts.
- > Printing of receipts and labels with Windows fonts.
- > Receipts and labels design.
- > Invoices and delivery notes design.
- > Pre-defined formats of labels, delivery notes and simplified invoices.

- > Document format associated with client.
- > Personalization of header and logos in simplified invoices.
- > Issue of invoices and delivery notes.
- > Billing of delivery notes.
- > Cash desk closing.
- > Generation of lists and graphs for total sales or broken down (by article, client, vendor, period, etc.) with three output options: on screen, via scale printer or via an external printer.
- > Stocks, clients and providers management in the scale.
- > Deletion of negative stocks.
- > Traceability management.
- > Option to record normal price and offer price for each article.
- > Price lists associated to each store or client.
- > Management of stock and article orders.
- > Data migration.
- > Backup.
- > The application runs automatically at start up.
- > Automatic opto adjustment.
- > Functions for point of sale secure cash payment system (under license).
- > Functions for electronic labels and plastic card labellers (under license).
- > Turnomatic in buyer display function (under license).
- > For integrated turn management system with digital signage solutions, consult (on request).
- Also available with an open solution for the installation of any of the most popular POS terminal applications on the market.

Capacity / Accuracy

- Multi-range (3,000 divisions): 6 kg / 2 g - 15 kg / 5 g.
- Optional:
 - > Mono-range (3,000 divisions): 15 kg / 5 g or 30 kg / 10 g.
 - > Multi-range (3,000 divisions): 15 kg / 5 g - 30 kg / 10 g.
 - > Mono-range (6,000 divisions): 12 kg / 2 g or 30 kg / 5 g.

Formats

- Flat.
- Double body.
- Hanging.
- Self-service.

Construction

- Highly resistant ABS plastic casing in counter formats.
- Stainless steel casing in hanging format.
- Steel casing in flat format..
- Stainless steel plate.
- Access to all non-metrological components without the need to unseal the scale.

Displays

- Vendor: fully configurable 15" projected capacitive or resistive touch screen TFT in double body, hanging and self-service format (W250 x H188 mm); 10.4" projected capacitive (W215 x H161 mm) or 12.1" resistive projected capacitive TFT (W304 x H228 mm) in flat format.
- Buyer: 7" (W191 x H122 mm) or 15" (W304 x H228 mm). Allows showing advertising or promotional images even during the selling operation (more than 250 images and videos in the scale).

Printer(s)

- Models available with 1 printer for receipts, 1 printer for labels, 1 printer for labels or receipts (changing the paper roll and the working mode) or with 2 printers (for receipts and labels).
- 2" thermal printer in flat, double body, hanging and self-service format.
- 3" thermal printer for receipts with autocutter in double body format.
- 3" thermal printer for labels flat format (not suitable for receipts).
- Resolution: 8 dots/mm; speed: 100 mm/sec.
- Cassette for immediate paper roll change in 2" label printers (not available in 3" printers).
- Linerless with autocutter in label printer, depending on format.
- Optional:
 - > Extra external printer for invoices, lists, etc.

Receipts

- Paper width from W30 mm to W60 mm in 2", up to W80 in 3".
- Unlimited items.
- Unlimited programmable formats.
- Unlimited logos.
- Windows fonts.
- Barcodes: EAN-13, EAN-128, Code 128, IFT-14 and QR.
- Name of vendor.
- VAT break down.
- Unlimited payment modes.
- Discounts per line and total.
- Offers: 3x2, 2nd unit discount, price per segment, free product, etc.
- Loyalty points.
- Customers on account.
- Stamps.
- Unlimited receipts.



Labels

- Paper width from W30 mm to W60 mm in 2", up to W80 in 3".
- Unlimited programmable formats.
- Unlimited logos.
- Windows fonts.
- Barcodes: EAN-13, EAN-128, Code 128, IFT-14 and QR.
- Unlimited information fields.
- Unlimited programmable texts.
- Unlimited headings per label.
- Manual and automatic pre-packing modes.
- 3 levels of totals.
- Printing of "n" identical labels.
- Printing with 90°, 180° and 270° rotation.
- Packaging date, expiry date, freezing date and extra date (for any application).
- Alphanumeric batch number.
- Unlimited types of generic traceability (for meat, fish, fruits, vegetables, etc.) and unlimited products. Included in the prevailing European legislation on bovine traceability.



Food information

- Compliance with EU Regulation 1169/2011 on the obligation to provide nutrition information to consumers as of 13 December 2016:
 - > Minimum letter size: 1.2 mm.
 - > Windows fonts.
 - > Effects: **bold**, underlined, or ***any effect of a Windows font*** for each character in the text.
 - > Possibility of using the general text "G" (21 x 64,000) for ingMainsients to highlight allergens with those effects and fonts.
 - > Programmable allergen table: automatically identifies allergens in the ingMainsient texts.
 - > For receipts, possibility of indicating in the PLU "name 2" of those that contain allergens "Consult allergens" (or PLU* + "*Contains allergens").
 - > Possibility of printing 2 labels for each operation: programmable by PLU, configurable information, 2nd automatic or manual label (to be used also as promotional labels).

CPU

- Processor: Intel Celeron Brasswell.
- Memory: 4 GB.
- Hard disk: 128 GB SSD.
 - > Optional: RAM upgrade to 8 GB (can be modified without notice).

Communications

- 2 USB (3.0).
- 1 RS-232 (self powered for connection to barcode scanners).
- 2 Ethernet.
- 1 Display Port (additional screen).
- 1 audio (microphone).
- 1 line-out (speakers).
- Optional:
 - > Wi-Fi.

Security

- Programmable access levels through user profiles.

Connectivity with other devices

- PC.
- Receipt of sales data from Dibal CS-2100 Series, 500 Range and D-900 Series scales, and CL-3 Series PC labellers.
- Windows printers.
- Barcode scanner (built-in scanner optional).
- Manual and automatic cash drawer.
- Queueing system (for hanging and double body formats).
- Other peripherals: keyboard, mouse, etc.
- Point of sale secure cash payment system.
- Connectable to a single load cell weighing platform, up to 400 x 400 mm max., and up to 30 kg. Consult compatible scales formats.

Software

- SW CS SERIES for Windows: touch application for sales, weighing management and labels and receipts design (DLD).
- Integration tools: in Windows or Linux to facilitate communication with the Back-Office.

Power supply

- Mains: 110 up to 230 VAC.

Energy consumption

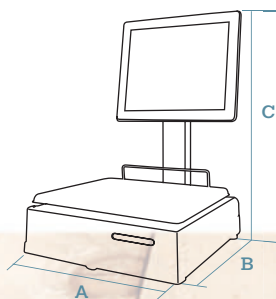
- 29.6-90 W (depending on the conditions of use).

1 RECEIPT PRINTER 3" AUTOCUTTER

Double Body Format



Dimensions



DATA IN mm

A	380
B	385
C	600

Plate dimensions:

L360 x W280 mm

Weight with packaging: 18.6 kg.



	Vendor display	Buyer display	Printer	Operating system	Sales software	Power	Capacity/Accuracy	Reference
CS-2250 W DB 15+7	15" resistive TFT touch screen	TFT 7"	3" Receipts (with autocutter)	Windows 10 (embedded)	CS SERIES SW compatible with open solution	Mains	6 kg / 2 g -15 kg / 5 g	7IATBDGLGE_ _
CS-2250 W DB 15+7	15" projected capacitive TFT touch screen	TFT 7"	3" Receipts (with autocutter)	Windows 10 (embedded)	CS SERIES SW compatible with open solution	Mains	6 kg / 2 g -15 kg / 5 g	7IATFDGLGE_ _
CS-2250 W DB 15+15	15" resistive TFT touch screen	TFT 15"	3" Receipts (with autocutter)	Windows 10 (embedded)	CS SERIES SW compatible with open solution	Mains	6 kg / 2 g -15 kg / 5 g	7IATCDGLGE_ _
CS-2250 W DB 15+15	15" projected capacitive TFT touch screen	TFT 15"	3" Receipts (with autocutter)	Windows 10 (embedded)	CS SERIES SW compatible with open solution	Mains	6 kg / 2 g -15 kg / 5 g	7IATGDGLGE_ _

M optional

1 LABEL PRINTER (OR RECEIPT) 2"

Flat
Format

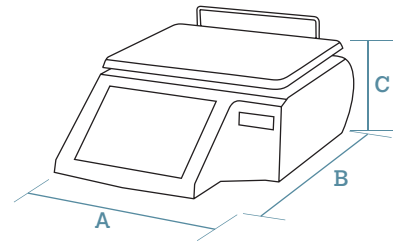


Dimensions

DATA IN mm

A	382
B	520
C	180

Plate dimensions: L360 x W260 mm.
Weight with packaging: 12.5 kg.



Cassette included.



	Vendor display	Buyer display	Printer	Operating system	Sales software	Power	Capacity/Accuracy	Reference
CS-2255 W F 10+7	10" projected capacitive TFT touch screen	TFT 7"	2" Labels (or Receipts)	Windows 10 (embedded)	CS SERIES SW compatible with open solution	Mains	6 kg / 2 g -15 kg / 5 g	7IA5SPGLGE_ _

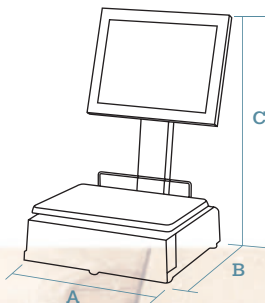
M optional

1 LABEL PRINTER (OR RECEIPT) 2"

Double Body Format



Dimensions



Cassette included.

DATA IN mm

A	380
B	385
C	600

Plate dimensions:
L360 x W280 mm.
Weight with packaging: 18.6 kg.

	Vendor display	Buyer display	Printer	Operating system	Sales software	Power	Capacity/Accuracy	Reference
CS-2255 W DB 15+7	15" resistive TFT touch screen	TFT 7"	2" Labels (or Receipts)	Windows 10 (embedded)	CS SERIES SW compatible with open solution	Mains	6 kg / 2 g - 15 kg / 5 g	7IA5BDGLGE__
CS-2255 W DB 15+7	15" projected capacitive TFT touch screen	TFT 7"	2" Labels (or Receipts)	Windows 10 (embedded)	CS SERIES SW compatible with open solution	Mains	6 kg / 2 g - 15 kg / 5 g	7IA5FDGLGE__
CS-2255 W DB 15+15	15" resistive TFT touch screen	TFT 15"	2" Labels (or Receipts)	Windows 10 (embedded)	CS SERIES SW compatible with open solution	Mains	6 kg / 2 g - 15 kg / 5 g	7IA5CDGLGE__
CS-2255 W DB 15+15	15" projected capacitive TFT touch screen	TFT 15"	2" Labels (or Receipts)	Windows 10 (embedded)	CS SERIES SW compatible with open solution	Mains	6 kg / 2 g - 15 kg / 5 g	7IA5GDGLGE__

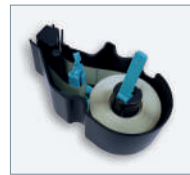
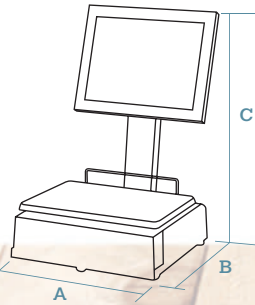
M optional

1 LABEL PRINTER (OR RECEIPT) 2" LINERLESS WITH AUTOCUTTER

Double Body Format



Dimensions



Cassette included.

DATA IN mm

- A** 380
- B** 385
- C** 600

Plate dimensions:
L360 x W280 mm.
Weight with packaging: 18.6 kg.

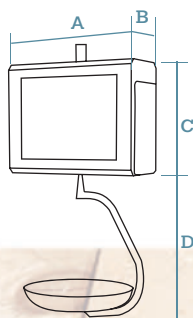
	Vendor display	Buyer display	Printer	Operating system	Sales software	Power	Capacity/ Accuracy	Reference
CS-2255 W DB 15+7	15" resistive TFT touch screen	TFT 7"	2" Labels (or Receipts) linerless with autocutter	Windows 10 (embedded)	CS SERIES SW compatible with open solution	Mains	6 kg / 2 g -15 kg / 5 g	7IANBDGLGE__
CS-2255 W DB 15+7	15" projected capacitive TFT touch screen	TFT 7"	2" Labels (or Receipts) linerless with autocutter	Windows 10 (embedded)	CS SERIES SW compatible with open solution	Mains	6 kg / 2 g -15 kg / 5 g	7IANFDGLGE__
CS-2255 W DB 15+15	15" resistive TFT touch screen	TFT 15"	2" Labels (or Receipts) linerless with autocutter	Windows 10 (embedded)	CS SERIES SW compatible with open solution	Mains	6 kg / 2 g -15 kg / 5 g	7IANCDGLGE__
CS-2255 W DB 15+15	15" projected capacitive TFT touch screen	TFT 15"	2" Labels (or Receipts) linerless with autocutter	Windows 10 (embedded)	CS SERIES SW compatible with open solution	Mains	6 kg / 2 g -15 kg / 5 g	7IANGDGLGE__

1 LABEL PRINTER (OR RECEIPT) 2”

S. Steel Hanging Format



Dimensions



Cassette included.

DATA IN mm

A	408
B	170
C	315
D	415

Plate dimensions: Ø 310 mm.
Weight with packaging: 19.1 kg.

	Vendor display	Buyer display	Printer	Operating system	Sales software	Power	Capacity/Accuracy	Reference
CS-2255 W H 15+7	15" resistive TFT touch screen	TFT 7"	2" Labels (or Receipts)	Windows 10 (embedded)	CS SERIES SW compatible with open solution	Mains	6 kg / 2 g - 15 kg / 5 g	7IA5BCGSIE_ _
CS-2255 W H 15+7	15" projected capacitive TFT touch screen	TFT 7"	2" Labels (or Receipts)	Windows 10 (embedded)	CS SERIES SW compatible with open solution	Mains	6 kg / 2 g - 15 kg / 5 g	7IA5FCGSIE_ _
CS-2255 W H 15+15	15" resistive TFT touch screen	TFT 15"	2" Labels (or Receipts)	Windows 10 (embedded)	CS SERIES SW compatible with open solution	Mains	6 kg / 2 g - 15 kg / 5 g	7IA5CCGSIE_ _
CS-2255 W H 15+15	15" projected capacitive TFT touch screen	TFT 15"	2" Labels (or Receipts)	Windows 10 (embedded)	CS SERIES SW compatible with open solution	Mains	6 kg / 2 g - 15 kg / 5 g	7IA5GCGSIE_ _

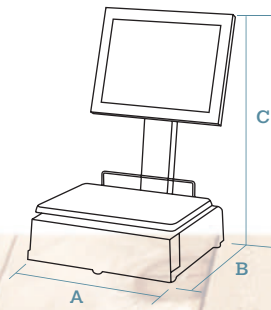
M optional

1 LABEL PRINTER 2"

Self-Service
Format



Dimensions



DATA IN mm

- A** 380
- B** 385
- C** 600

Plate dimensions:
L360 x W280 mm.
Weight with packaging: 18.6 kg.



Cassette included.

	Front display	Back display	Printer	Operating system	Sales software	Power	Capacity/Accuracy	Reference
CS-2255 W SS 15	15" resistive TFT touch screen	-	2" Labels	Windows 10 (embedded)	CS SERIES SW compatible with open solution	Mains	6 kg / 2 g -15 kg / 5 g	7IA5ADGLGE__
CS-2255 W SS 15	15" projected capacitive TFT touch screen	-	2" Labels	Windows 10 (embedded)	CS SERIES SW compatible with open solution	Mains	6 kg / 2 g -15 kg / 5 g	7IA5EDGLGE__

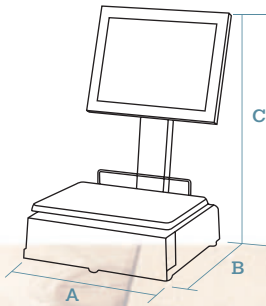
M optional

1 LABEL PRINTER 2" LINERLESS WITH AUTOCUTTER

Self-Service
Format



Dimensions



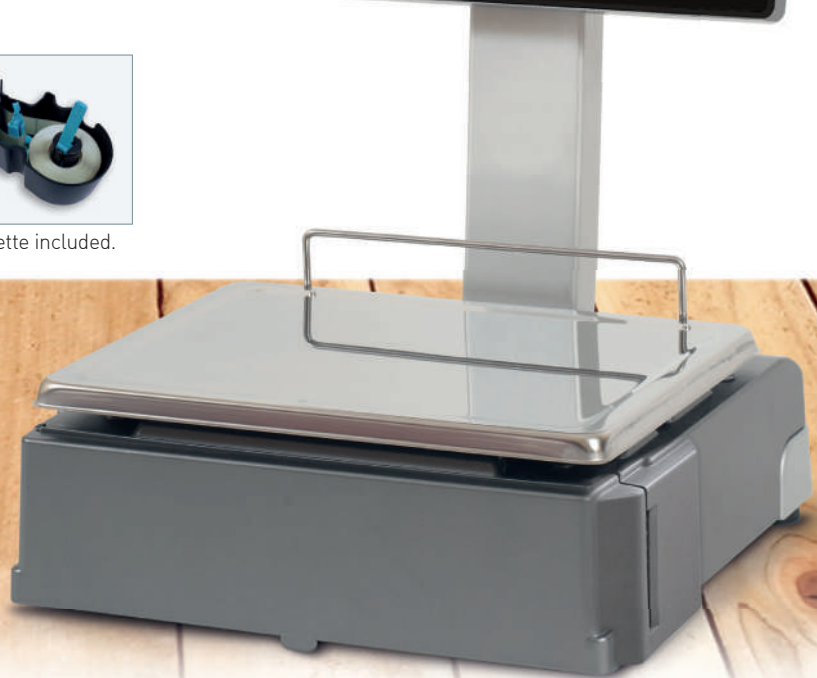
DATA IN mm

A	380
B	385
C	600

Plate dimensions:
L360 x W280 mm.
Weight with packaging: 18.6 kg.



Cassette included.



	Front display	Back display	Printer	Operating system	Sales software	Power	Capacity/Accuracy	Reference
CS-2255 W SS 15	15" resistive TFT touch screen	-	2" Labels linerless with autocutter	Windows 10 (embedded)	CS SERIES SW compatible with open solution	Mains	6 kg / 2 g -15 kg / 5 g	71ANADGLGE__
CS-2255 W SS 15	15" projected capacitive TFT touch screen	-	2" Labels linerless with autocutter	Windows 10 (embedded)	CS SERIES SW compatible with open solution	Mains	6 kg / 2 g -15 kg / 5 g	71ANEDGLGE__

M optional

1 LABEL PRINTER 3"

Flat
Format

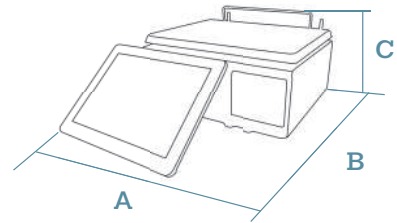


Dimensions

DATA IN mm

A	440
B	550
C	185

Plate dimensions: L360 x W280 mm.
Weight with packaging: 16.6 kg.



	Vendor display	Buyer display	Printer	Operating system	Sales software	Power	Capacity/Accuracy	Reference
CS-2255 W F 12+7	12" resistive TFT touch screen	TFT 7"	3" Labels	Windows 10 (embedded)	CS SERIES SW compatible with open solution	Mains	6 kg / 2 g -15 kg / 5 g	7IAELPGLNE_ _

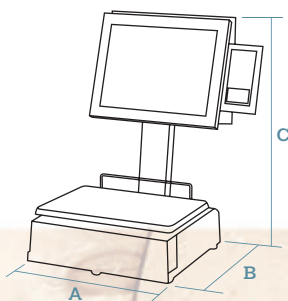
M optional

2 PRINTERS (RECEIPTS AND LABELS) 2"

Double Body
Format



Dimensions



Cassette included.

DATA IN mm

A	380
B	385
C	600

Plate dimensions:
L360 x W280 mm.
Weight with packaging: 22.0 kg.



	Vendor display	Buyer display	Printer	Operating system	Sales software	Power	Capacity/Accuracy	Reference
CS-2257 W DB 15+7	15" resistive TFT touch screen	TFT 7"	2" Receipts + 2" Labels	Windows 10 (embedded)	CS SERIES SW compatible with open solution	Mains	6 kg / 2 g - 15 kg / 5 g	7IA7BDGLGE_ _
CS-2257 W DB 15+7	15" projected capacitive TFT touch screen	TFT 7"	2" Receipts + 2" Labels	Windows 10 (embedded)	CS SERIES SW compatible with open solution	Mains	6 kg / 2 g - 15 kg / 5 g	7IA7FDGLGE_ _
CS-2257 W DB 15+15	15" resistive TFT touch screen	TFT 15"	2" Receipts + 2" Labels	Windows 10 (embedded)	CS SERIES SW compatible with open solution	Mains	6 kg / 2 g - 15 kg / 5 g	7IA7CDGLGE_ _
CS-2257 W DB 15+15	15" projected capacitive TFT touch screen	TFT 15"	2" Receipts + 2" Labels	Windows 10 (embedded)	CS SERIES SW compatible with open solution	Mains	6 kg / 2 g - 15 kg / 5 g	7IA7GDGLGE_ _

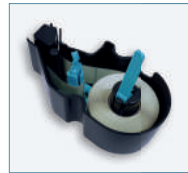
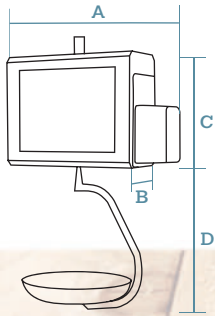
M optional

2 PRINTERS (RECEIPTS AND LABELS) 2"

S. Steel Hanging Format



Dimensions



Cassette included.

DATA IN mm

- A** 508
- B** 170
- C** 315
- D** 415

Plate dimensions: Ø 310 mm.
Weight with packaging: 19.1 kg.



	Vendor display	Buyer display	Printer	Operating system	Sales software	Power	Capacity/Accuracy	Reference
CS-2257 W H 15+7	15" resistive TFT touch screen	TFT 7"	2" Receipts + 2" Labels	Windows 10 (embedded)	CS SERIES SW compatible with open solution	Mains	6 kg / 2 g -15 kg / 5 g	71A7BCGSIE__
CS-2257 W H 15+7	15" projected capacitive TFT touch screen	TFT 7"	2" Receipts + 2" Labels	Windows 10 (embedded)	CS SERIES SW compatible with open solution	Mains	6 kg / 2 g -15 kg / 5 g	71A7FCGSIE__
CS-2257 W H 15+15	15" resistive TFT touch screen	TFT 15"	2" Receipts + 2" Labels	Windows 10 (embedded)	CS SERIES SW compatible with open solution	Mains	6 kg / 2 g -15 kg / 5 g	71A7CCGSIE__
CS-2257 W H 15+15	15" projected capacitive TFT touch screen	TFT 15"	2" Receipts + 2" Labels	Windows 10 (embedded)	CS SERIES SW compatible with open solution	Mains	6 kg / 2 g -15 kg / 5 g	71A7GCGSIE__

Options



> Built-in scanner in scale



> License for turnomatic managed by the scale.

Option	Characteristics	Ref.
Capacity 15 kg / 5 g	Mono-range (3,000 divisions).	...N_>(*)
Capacity 30 kg / 10 g	Mono-range (3,000 divisions).	...Y_(*).
Capacity 15 kg / 5 g - 30 kg / 10 g	Multi-range (3,000 divisions).	...F_(*).
Capacity 12 kg / 2 g	Mono-range (6,000 divisions).	...V_(*).
Capacity 30 kg / 5 g	Mono-range (6,000 divisions).	...P_(*).
Wi-Fi	Wireless communications (IEEE 802.11n).	Consult
Built-in scanner in scale	1D and 2D barcodes.	Consult
RAM upgrade to 8 GB	Memory upgrade from 4 GB to 8 GB.	Consult
CS SERIES PC software for Windows	Touch application for sales, weighing management and labels and receipts design (DLD).	7340SW1100
License for point of sale secure cash payment system	Cashlogy, Cashdro and Glory.	7360011
License for labellers for tags on plastic cards	(See CS-2100 Series and CS-2200 Series accessories for more info).	Consult
License for turnomatic managed by the scale	The turn is shown on the buyer display.	7360041
Metrological verification (M)	According to EU weighing directives (See section on equipment metrological verification).	Consult

(*) The scale references with this capacity are obtained by replacing the last characters of the reference for the standard scale with the indicated ending.

Accessories



Ref: BCR73

Small Italian plate

L357 x W235 x H55 mm.



Ref: BCR74

Large Italian plate

L407 x W284 x H60 mm.



Ref: BU-C1229

Flat plate for hanging scales

L360 x W280 mm, instead of the semi deep plate.



Ref: BC-C039

Deep plate for hanging scales

Ø310 x H70 mm, instead of the semi deep plate.



Ref: BCH18

Barcode scanner

Includes connection to the scale. (For built-in scanner, consult the options).



Ref: BL-P3623

Adapter for receipt printing in 2" label printer

Required for standard size receipt rolls.



Ref: 496140NA

Base

Cabinet for self-service format.

Note:

- The references correspond to standard models: Dark gray ABS plastic or stainless steel casing (depending on the format), 15" or 10" touch screen TFT in vendor side and 15" or 7" TFT display in buyer side (depending on format), stainless steel flat plate in counter scales (semi deep stainless steel plate in hanging scales), cash drawer connector, queueing system connector in hanging scale and TCP/IP Ethernet communications. Capacity/Accuracy: 6 kg / 2 g - 15 kg / 5 g.

Accessories: Labellers for tags on plastic cards

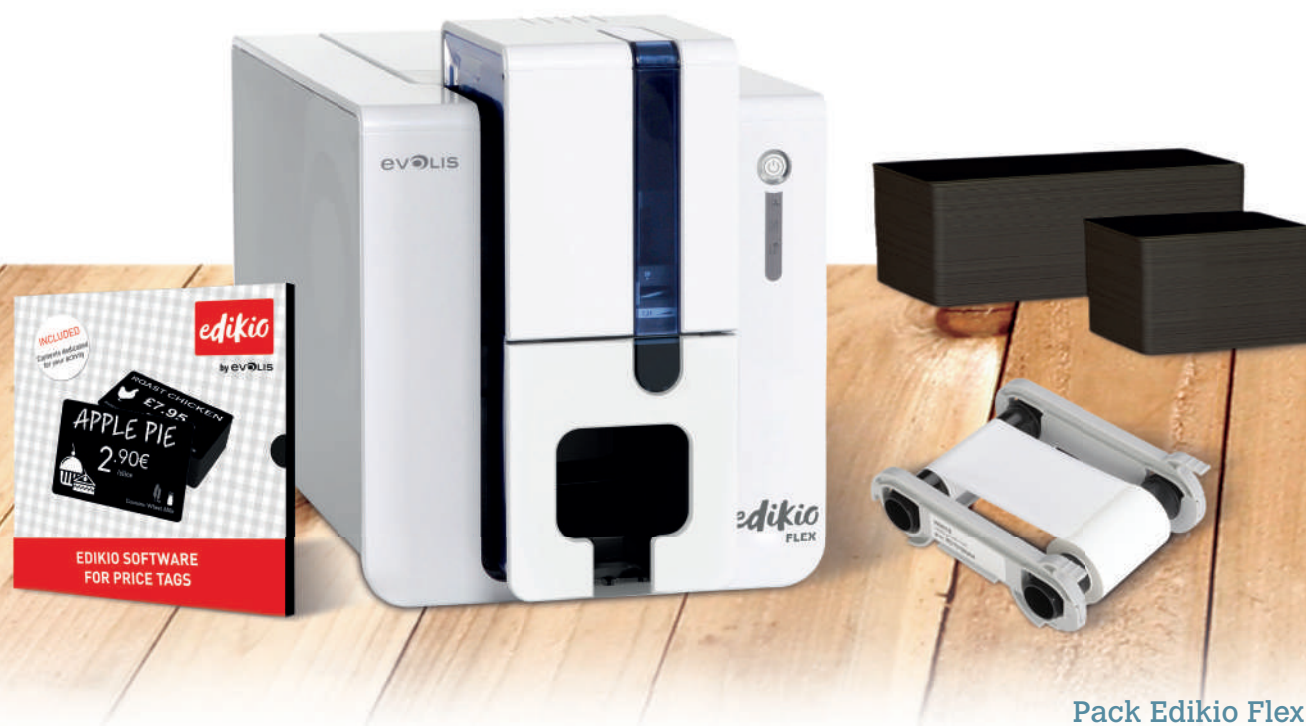
Packs to print price tags on plastic cards:

Edikio Flex pack:

- Single-sided printing.
- Standard or long cards.

Edikio Duplex pack:

- Double-sided printing. -
- Standard cards.



Pack Edikio Flex

The packs include:

	Printer	Software	No. of PVC cards	No. of transfer ribbons	Reference
Pack Edikio Flex	Edikio Flex (for single-sided printing)	Edikio Standard	100 (mat black)	1 (white)	BI0586
Pack Edikio Duplex	Edikio Duplex (for double-sided printing)	Edikio Pro	200 (mat black)	1 (white)	BI0587

They also include: 1 usb cable, 1 start cleaning kit with block and power cable.

Note: 2-year warranty for the Edikio Flex pack printer and 3-year warranty for the Edikio Duplex pack printer.

Consumables and software for the labellers: Ribbons



BI0588

White ribbon cassette

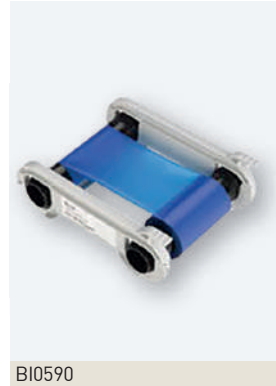
1,000 prints per roll.



BI0589

Black ribbon cassette

2,000 prints per roll.



BI0590

Blue ribbon cassette

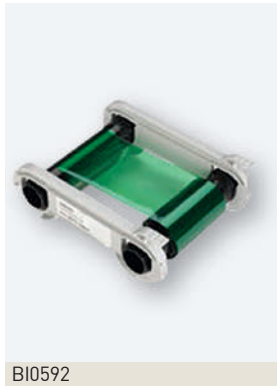
1,000 prints per roll.



BI0591

Red ribbon cassette

1,000 prints per roll.



BI0592

Green ribbon cassette

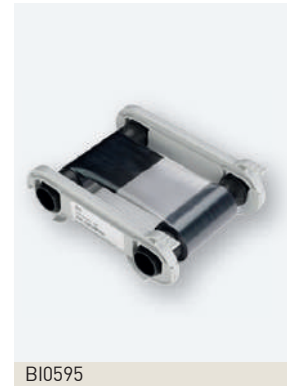
1,000 prints per roll.



BI0593

Gold ribbon cassetteUnichroma.
1,000 prints per roll.

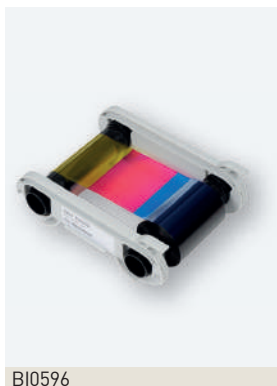
BI0594

Silver ribbon cassetteUnichroma.
1,000 prints per roll.

BI0595

Black with resin ribbon cassette

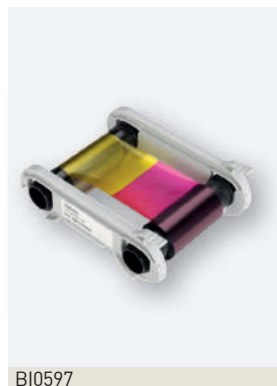
600 prints per roll.



BI0596

1/3 yellow, pink, cyan blue, 1/3 black and 1/3 overlay ribbon cassette

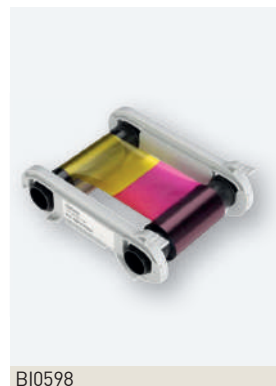
400 prints per roll.



BI0597

Yellow, pink, cyan blue and black with resin ribbon cassette

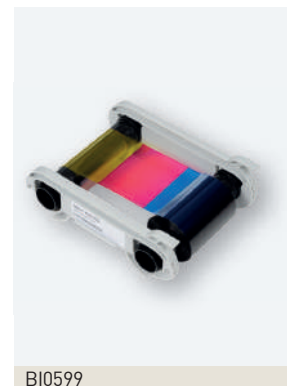
200 prints per roll.



BI0598

Yellow, pink, cyan blue and black with resin ribbon cassette

300 prints per roll.

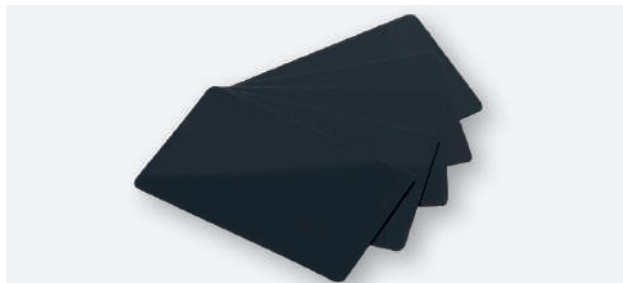


BI0599

Double-sided printing ribbon cassetteOnly for DUPLEX printer.
Front: Yellow, pink, cyan blue and black with resin. Back: black. 200 prints per roll.

CS-2100 series and CS-2200 series

PVC cards



Ref: BI0600

Mat black PVC card

5 packs of 100 units.
Length: 85.6 mm / Width: 54 mm / Thicknesses: 0.76 mm.



Ref: BI0601

White PVC card

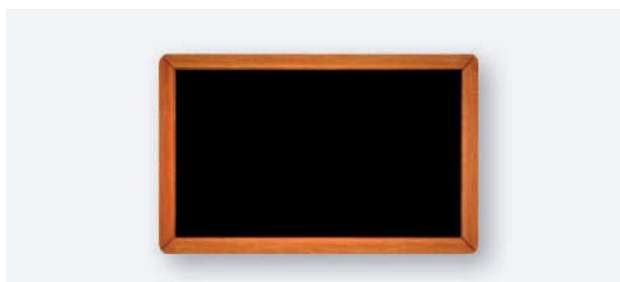
500 units.
Length: 85.6 mm / Width: 54 mm / Thicknesses: 0.76 mm



Ref: BI0602

White 3TAG PVC cards, divisible into 3 card

Simultaneous printing of 3 small cards.
100 units. Length of small card: 28.5 mm



Ref: BI0603

PVC pre-printed cards slate design

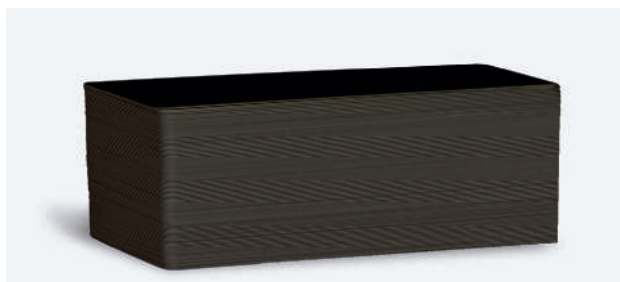
100 units.
Length: 85.6 mm / Width: 54 mm / Thicknesses: 0.76 mm



Ref: BI0604

Long PVC black card (50 x 120 mm)

500 units.
Only for Edikio FLEX printer.



Ref: BI0605

Long PVC black card (50 x 150 mm)

500 units.
Only for Edikio FLEX printer.

Cleaning kits

	Characteristics	Ref.
Regular cleaning kit	5 adhesive cards and 5 swabs to clean cleaning roller and print-head.	BI0606
Advanced cleaning kit	1 pack of 2 pre-saturated 'T' cards, 2 adhesive wet cards, 1 pen and wet wipes to clean a transport rollers, cleaning roller and print-head.	BI0607
Cleaning kit for cleaning roller	1 pack of 50 adhesive cards.	BI0608
Cleaning kit for transport rollers	1 pack of 10 'T' cards.	BI0609
Cleaning kit for print-head	1 pack of 3 pens.	BI0610
Cleaning kit for print-head	25 swabs.	BI0611
Cleaning kit for rollers	1 dispenser of 60 wet wipes.	BI0612

Installation and software

	Characteristics	Ref.
Installation and start-up of 1 printer		Consult
Installation and start-up of 2 printers	For larger quantities of printers, consult.	Consult
Update from Standard to Pro	Each of the software versions includes: tag library, 200-image library and chalk type design typography. Easy import from an Excel file of the information of the products to the cards.	BI0613
Update from Lite to Standard *		BI0614
Update from Lite to Pro *		BI0615

* "From Lite to Standard" and "from Lite to Pro" editions updates are only available for the DUPLEX printer.

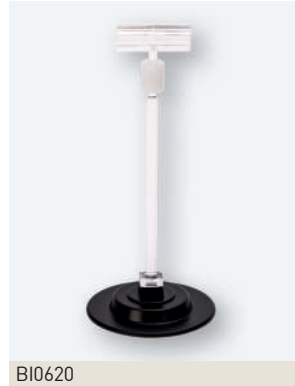
Supplementary articles for labels: Price tag holders



BI0617

Magnetic price tag holders

Height: 80 mm.
1 pack of 25 units.



BI0620

Magnetic price tag holders

Height: 120 mm.
1 pack of 25 units.



BI0616

Narrow price tag spike

1 pack of 25 units.



BI0619

Wide price tag spike

1 pack of 25 units.



BI0618

Price tag stand

1 pack of 25 units.



BI0621

Promo badge with fixing clip

1 pack of 25 units. To stand out a standard card.



BI0622

Price tag clamp

Height: 40 mm.
1 pack of 25 units.



BI0623

Price tag clamp

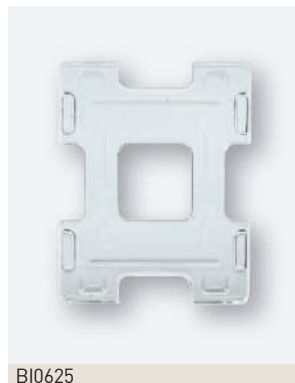
Height: H80 mm.
1 pack of 25 units.



BI0624

H shape clip

1 pack of 25 units. To add a small card to a standard card.



BI0625

Dual-card holder

1 pack of 5 units. For 2 cards of 85.6 mm x 54 mm.



BI0626

Glass stand

Height: 80 mm.
1 pack of 25 units.



BI0627

Glass stand

Height: 120 mm.
1 pack of 25 units.

Accessories: wireless electronic labels

Electronic labels

ses imagotag



Ref: BI0552

2.7" label

- Dimension of the label: 85.7 x 50 x 16.6 mm.
- Dimension of the display: 57.3 x 38.2 mm.
- Minimum order of 80 units.



Ref: BI0553

4.2" label

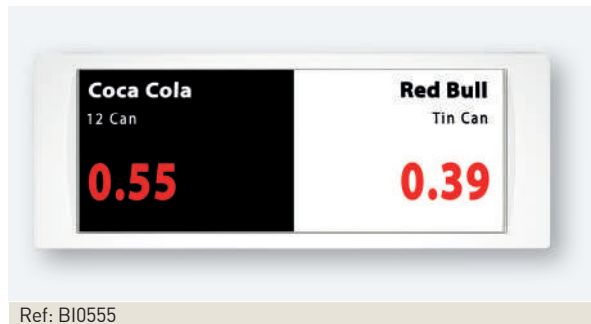
- Dimension of the label: 114.9 x 88.9 x 17.4 mm.
- Dimension of the display: 84.8 x 63.6 mm.
- Minimum order of 60 units.



Ref: BI0554

4.2" label with IP67 protection

- Ideal for fishmongers.
- Dimension of the label: 114.9 x 88.9 x 17.4 mm.
- Dimension of the display: 84.8 x 63.6 mm.
- Minimum order of 60 units.



Ref: BI0555

4.5" label

- Dimension of the label: 132.6 x 50.9 x 16.4 mm.
- Dimension of the display: 104.2 x 38.2 mm.
- Minimum order of 60 units.



Ref: BI0556

7.4" label

- Dimension of the label: 186.9 x 125.9 x 19.3 mm.
- Dimension of the display: 161.6 x 97 mm.
- Minimum order of 10 units.

Complementary articles, software and maintenance service: Access point and supports



Ref: BI0557

Access point + Mounting kit

Radio frequency system for connection to software.



Ref: BI0558

Black clip for fruits and vegetables



Ref: BI0559

Adapter for foot

For 2.7" labels.



Ref: BI0560

Adapter for foot

For 4.2" or 7.4" labels.



Ref: BI0561

Transparent foot of 5 cm

For 2.7" or 4.2" labels.



Ref: BI0562

Transparent foot of 10 cm

For 2.7" or 4.2" labels.



Ref: BI0563

Ice pick for fishmongers

For 4.2" labels with IP67 protection.



Ref: BI0573

Rail universal

L1,000 mm, transparent. The reference may vary depending on the type of shelving.

Configuration, software and maintenance service

	Characteristics	Ref.
Configuration of 80 labels		Consult
Configuration of 160 labels		Consult
Configuration of 240 labels	For the configuration of higher quantities of labels, consult.	Consult
Core service software	Application for the configuration and management of labels.	Ref: BI0564 (Up to 100 labels)
		Ref: BI0565 (Up to 500 labels)
Maintenance service	Level 3 (annual).	Ref: BI0566