

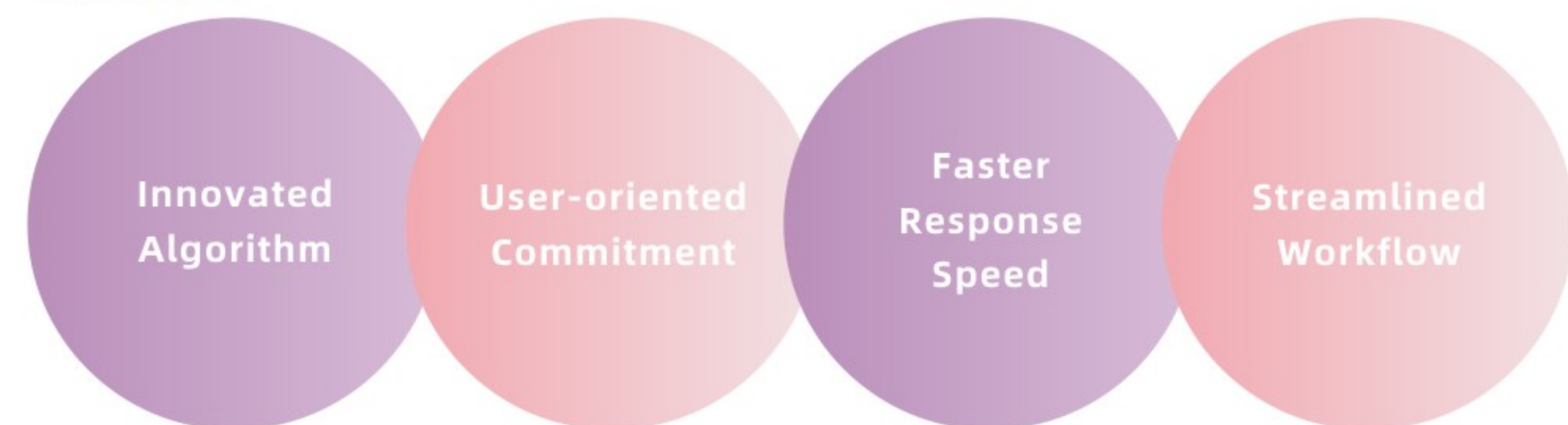
Exclusive for Women's Health

Increasing emphasis on women's health appeals to higher requirements to the medical community. Equipped with brand new ultrasound imaging platform Realview⁺ and full OB/GYN solution kit, Apogee 6300 is served to deliver truly exceptional care with efficiency and simplicity.



RealView⁺, maximizes clinical value

Powered by the most advanced platform Realview⁺, Apogee 6300 conducts dedicated OB/GYN diagnostic output with outstanding imaging performance and efficient workflow.

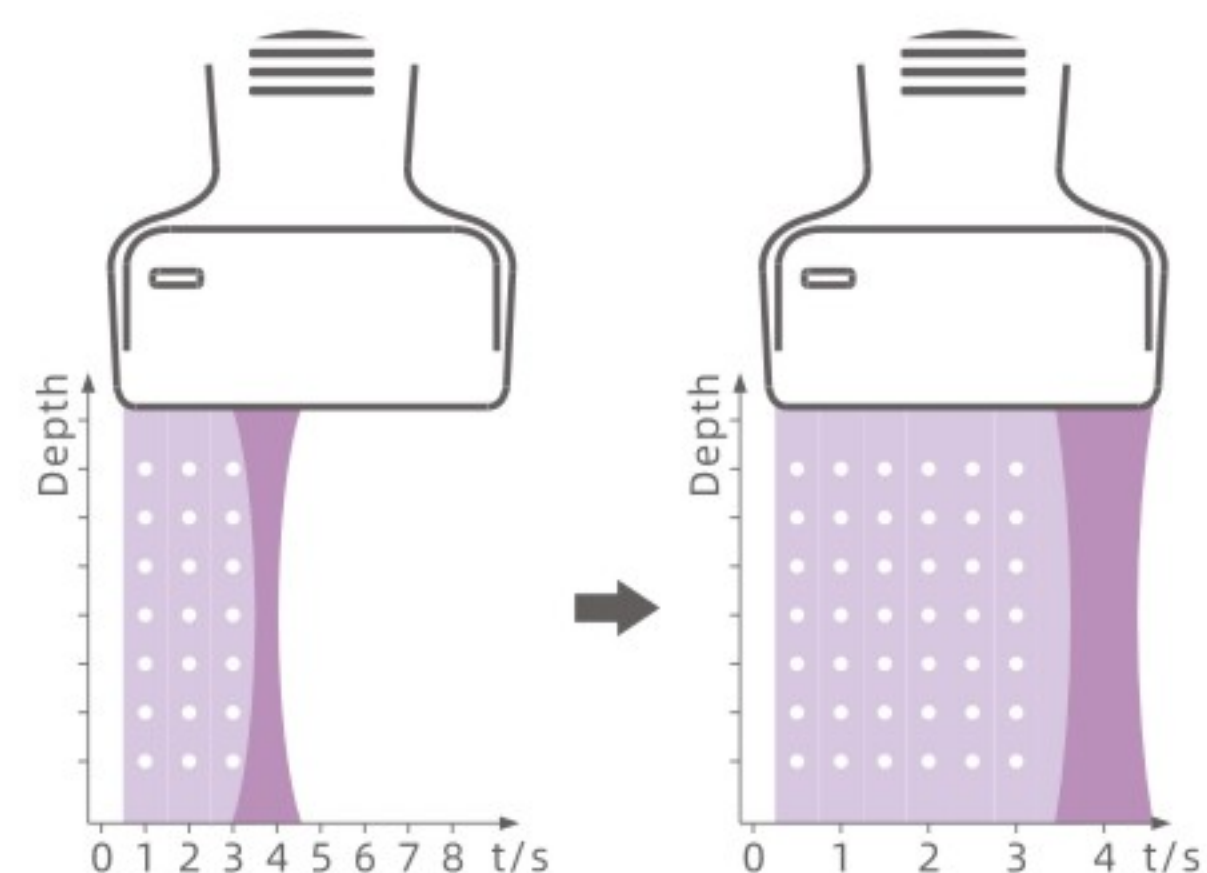


Pixel Echo Zone (PEZ)

During wide band imaging processing, the system automatically collects echo information by larger processing zone to enhance acquisition efficiency and computing speed.

Target Focus

This upgraded technology provides automatic compensation in signal transmission to further improves focus accuracy and image uniformity in the entire image area.



MAI

Anything, Anytime, Anywhere
Live Service for Imaging

SIUI

HEADQUARTERS:

Shantou Institute of Ultrasonic Instruments Co., Ltd.
Add: No.77, Jinsha Road, Shantou 515041 Guangdong, China
Tel: 86-754-8825 0150 Fax: 86-754-8825 1499
<http://www.siui.com> E-mail: siui@siui.com

HONG KONG OFFICE:

Shantou Institute of Ultrasonic Instruments (HK) Co., Ltd.
Add: Room 2101, Tung Chiu Commercial Center 193 Lockhart Road, HK
Tel: 852-2891 6722 Fax: 852-2891 6723



All rights reserved to SIUI 2021
Apogee 6300 OB/GYN EN10211115

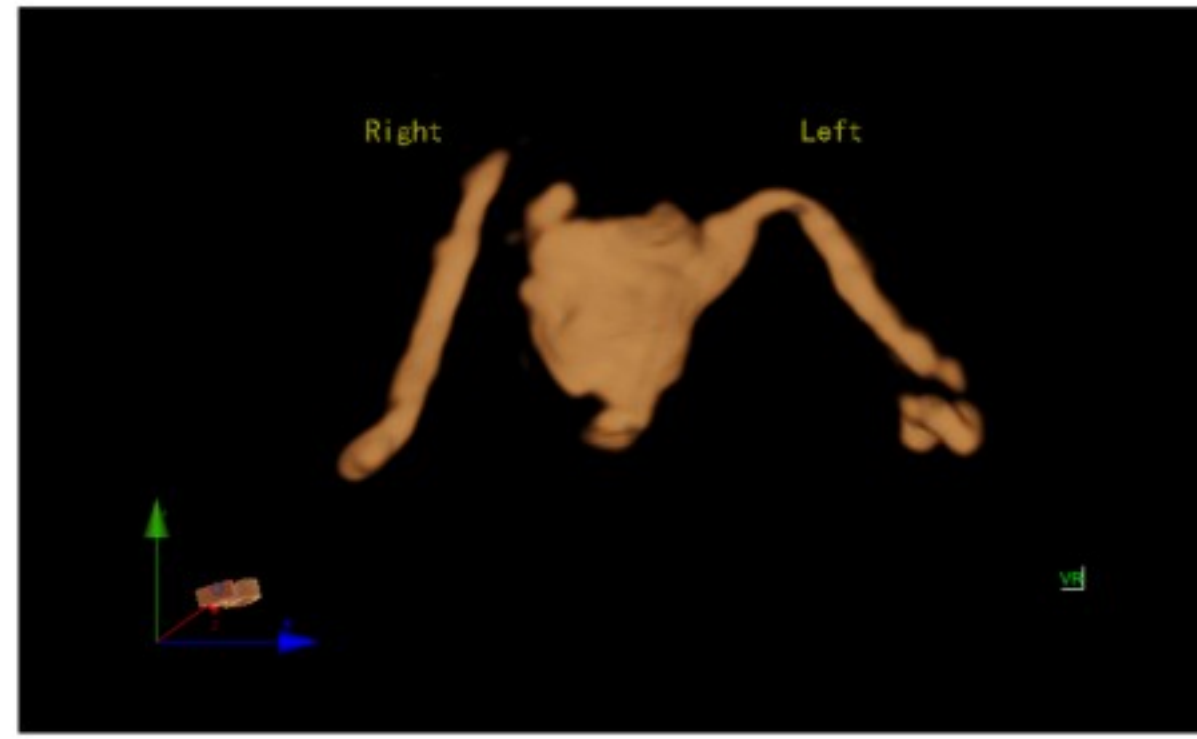


Apogee 6300

Deliver Truly Exceptional Care

SIUI

Versatile OB-GYN Kit Boosts Diagnostic Confidence

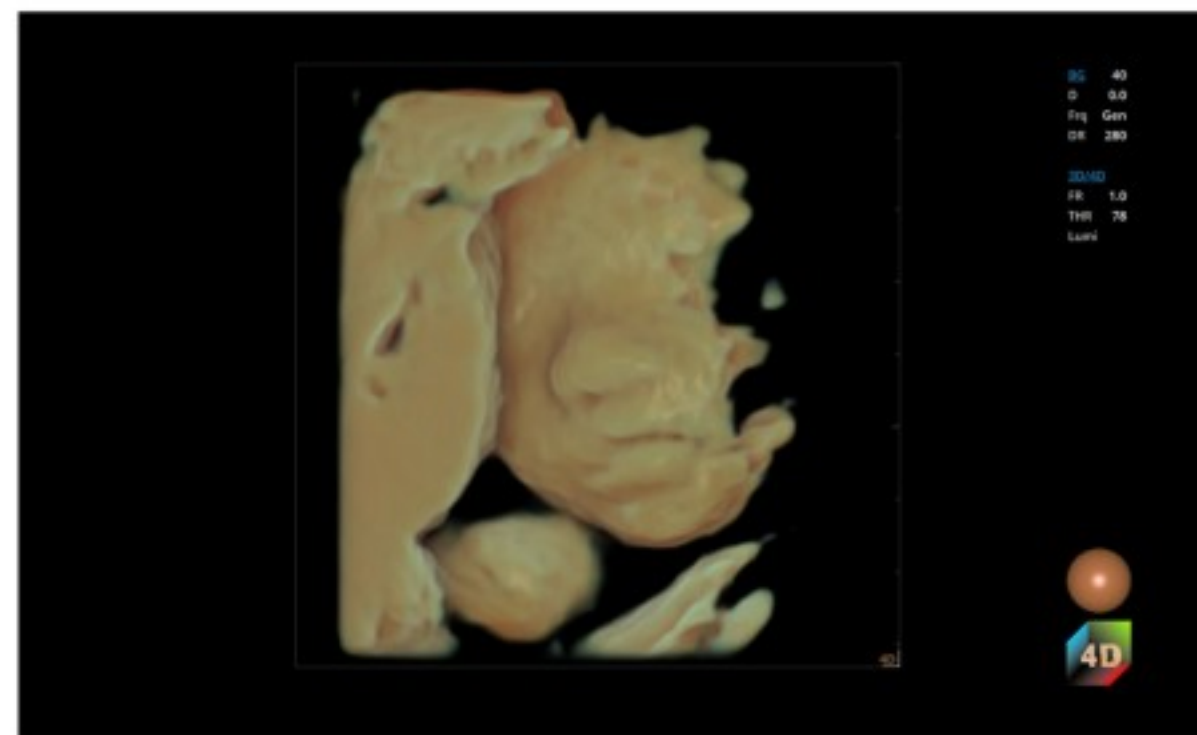


Salpingography

With intuitive visualization of oviduct, Salpingography offers a more effective evaluation for tubal morphology and patency, facilitating diagnosis on female infertility and pelvic pathology. It can also assist doctor in monitoring patient's treatment.

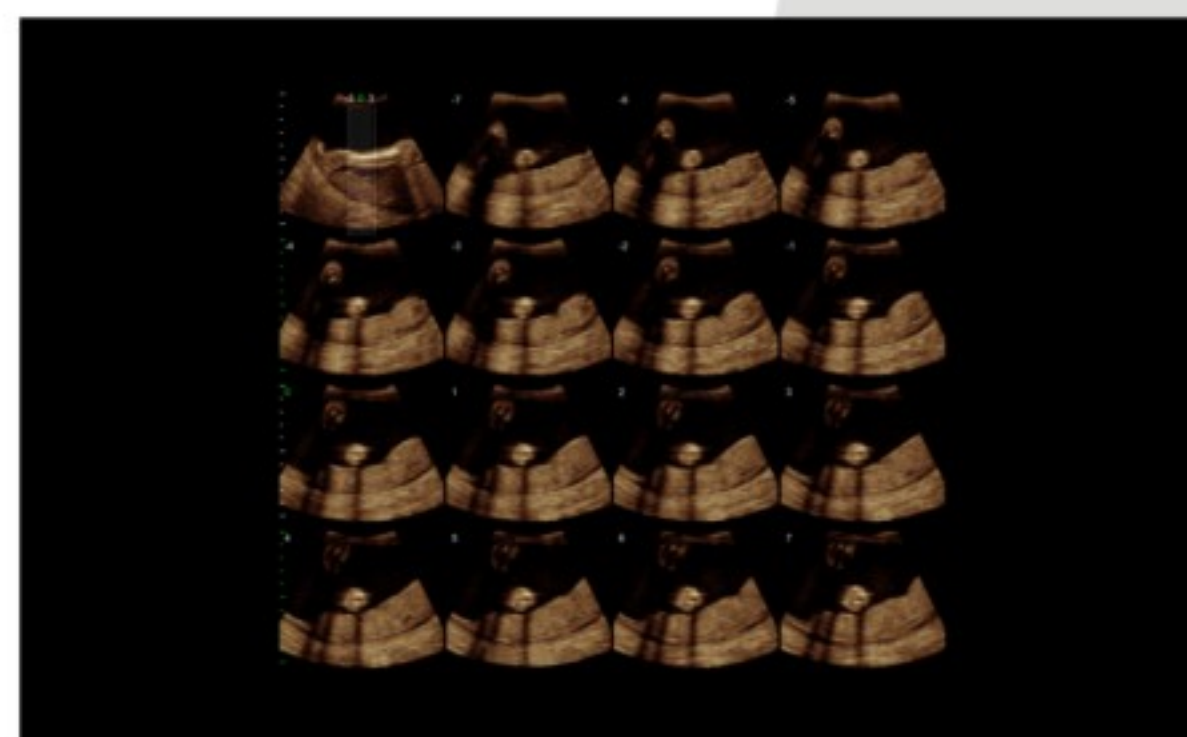
Auto OB

Automatic measurements of major fetal examined parameters on a single click allow clinicians to obtain accurate and consistent results with easier and faster experience.



4D Pro

The amazing 4D tool includes different functional exams like nSlice, Q-cut and Any Cut to obtain detailed fetal images to satisfy your needs.



nSlice

Ideal Specialized Transducers Ensure Distinguished Images

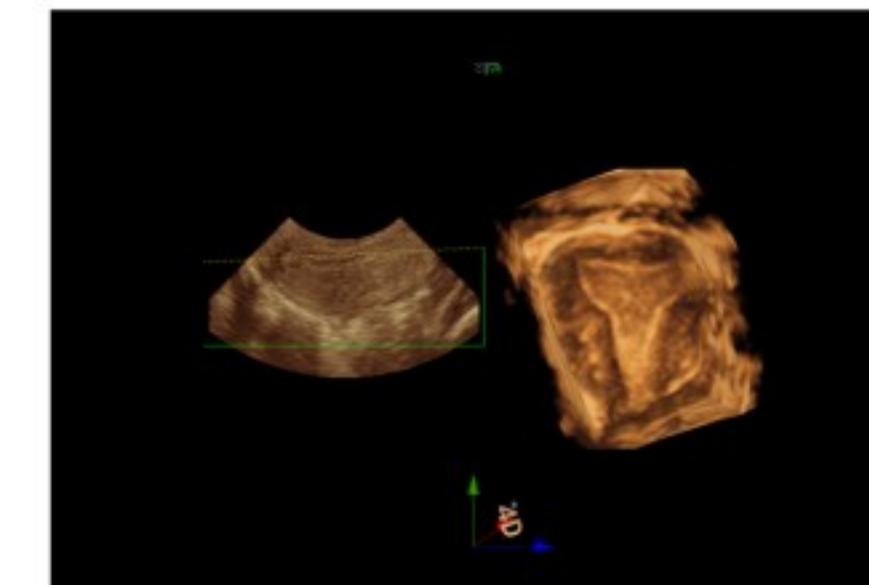
SIUI's vaginal probe and 4D probe provide **superior image quality and detail at depth**, and is ideal for all-round obstetric and gynecological examinations.

4D convex probe presents 4D image of fetus with unprecedented clarity. It also facilitates to reveal fetal face, bones, organs and other internal structures through multiple imaging modes, contributing to early diagnosis of fetal anomaly.



Fetal spine

With sleek design to improve patient comfort, **4D vaginal probe** offers ideal penetration and detailed images at all depths to support easier uterus health evaluation.



Endometrium

The high density vaginal probe is employed not only in the examination of uterus and adnexa uteri but also for the embryo exam in early pregnancy.



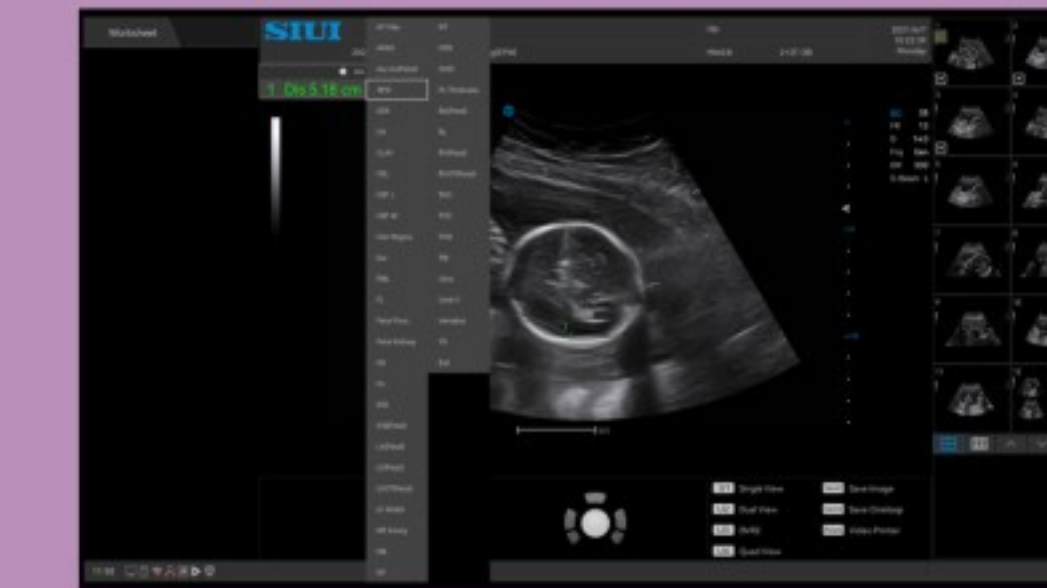
Embryo in early pregnancy

Streamlined Workflow Understands Your Needs

About 80% of sonographers suffer from work-related pain. Apogee 6300 endowed with simplified workflow facilitates sonographers to **complete exams with less repetitive work**.

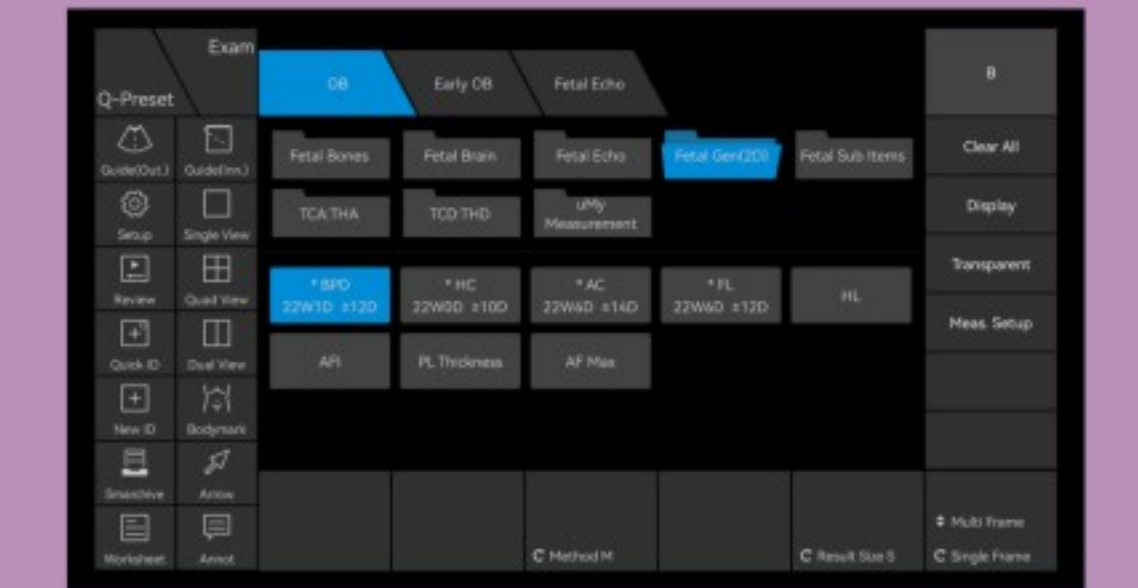
Measurement Kit Import

Routine measurement results can be imported to OB/GYN measurements items for further correlative calculation. (eg. GA & EDD can be calculated based on HC distance result)



Gestational Age Indication

Different measurement items indicate gestational age to assist doctor's assessment on fetal growth conditions.



Upgraded User Experience Smooths Your operation



Gel-warmer



Intuitive navigation layout for clear indication



Satellite navigation keys



5 probe connectors