

LMS050 - INFLOOR BRACKET SYSTEM

The LMS050 Infloor Bracket enables lighting and equipment to be installed in new or existing flooring/walkways enabling lighting or equipment to be serviced safely from above.

TECHNICAL SPECIFICATIONS

Mount: Infloor

** Site specific configuration to suit individual site requirements and/or existing infrastructure*

- ✓ Hot Dipped Gal (HDG) Finish, 316 Stainless Steel or Aluminium
- ✓ Recommended maximum light fitting weight up to 12kg*

** Recommended maximum installed equipment weight refers to recommended limits for ease of operation, not the items structural/engineered capacity and includes any equipment and associated mounting bracket.*

FEATURES & BENEFITS

ONE PERSON OPERATION

Simple one person operation

EASY RELEASE

Easy release lock mechanism utilizing included tool which locks closed and open.

SAFETY FOCUS

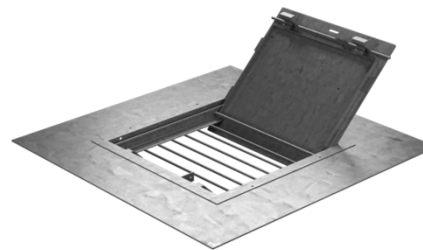
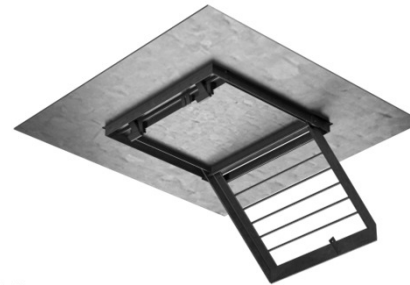
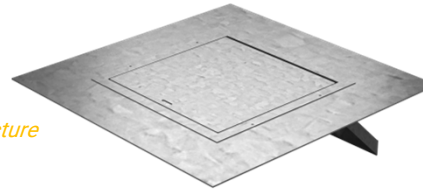
Bracket locks opened & closed with safety grill automatically closing off open space left when equipment raised for maintenance

SAVES DOWN TIME

Saves plant down time when installed over existing in service equipment

NO SPECIALISED EQUIPMENT NEEDED

Eliminates the use of specialised access equipment for lighting maintenance



**Australian Made Lighting Poles & Accessories for accessible
Lighting Installations & Maintenance**

www.lightmountingsystems.com.au

sales@lmsau.com

61 2 4932 9000

