



**As a first responder,** you realize there is no standard situation for an emergency evacuation. Your environments will be unpredictable...

**Med Sled® can help!**



### Transport / Extrication MS30

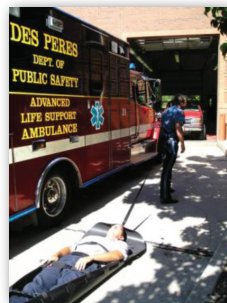
- + **Dramatically reduces** the effort of moving injured
- + **Hands-free** tether placement around waist or shoulder allows for carrying equipment or supplies
- + **Patented design provides stabilization** and can be used with a backboard or Stokes® Basket
- + **Utilizes High Density Polyethylene (HDPE)**, a more durable material
- + **Slides easily** for safe and immediate transport
  - **Compact** -- carrying bag with shoulder strap included
  - **Lightweight** -- only 6lbs!
  - **Durable** -- made of highly durable HDPE that helps protect person while transporting

### Transport / Evacuation MS36

- + **Simple and Easy to Use**
- + **Stairwell Braking System** attached to every sled, allows for safe and controlled descents
- + **NO LIFTING** provides for a bundle and log roll positioning of the injured and drag transport
- + **Intuitive** product enables utilization of all available personnel (just-in-time-training)
- + **Allows users** to move those 2-3 times their own weight
- + **Utilizes High Density Polyethylene**, a more durable material
- + **Patented design provides for inhabitant stabilization**
  - Can be used with a backboard or Stokes® Basket
  - Can hold IV bags, oxygen and other small devices
- + **Decon Capable**
- + **Compact** -- carrying bag with shoulder strap included
- + **Lightweight** -- only 12lbs!

### Vertical Rescue MS36VLR

- FAST DEPLOYMENT - 60 SECONDS**
- + **Integrated Hoist System** for quick lifting (pre-assembled)
- LIGHTWEIGHT**
- + Weighs less than 17 lbs.
- STRONG**
- + **Utilizes High Density Polyethylene**, a more durable material
- + **10,000 lb.** rated perimeter tether secures the inhabitant expediting the rescue process
- + **Utilizes 4,000 lb.** rated cross straps with side release buckles for ease of use
- + **DeCon Capable**
- INTEGRATED HOIST SYSTEM**
- + **Vertical - Horizontal Lift** capability
- + **Hoist system** rated to 10,000 lbs.
- + **Helicopter hoist** straps included with sled
- + **No assembly** required at time of deployment



**TO ORDER** Sales and Customer Service: **1-866-207-5993** or for more information: [Sales@medsled.com](mailto:Sales@medsled.com)