

AUSTRALIAN & NZ DISTRIBUTOR

DELUXE System

DELUXE ELECTRIC WINCH SYSTEMS (interchangeable cameras)

SYSTEM COMPONENTS

Portable electric winch with variable speed motor control
 Cable Length Options 325, 650, 1000, 1650, or 2000 feet
 110/220VAC, 50-60 HZ, or from 12VDC source using supplied 300W sine wave inverter
 Encoder for on-screen depth display, feet or meters
 7-inch LCD monitor & sun shade
 Digital Video Recorder (DVR) with 8 GB SD card, 7-inch LCD Monitor
 Auxiliary output jacks for audio/video, tie clip microphone

Compass/mirror attachments for STD Cameras
 26" x 26" x 22" Shipping/Storage Case
 Accessory tools
 Spare parts kit
 Owner's Manual & Quick Setup Guide

OPTIONAL ACCESSORIES

Auxiliary Lights for Large Bores/Shafts/Mines/Caves
 Encoder Mounting Tripod (for shafts/wells in pits)

STD SS CAMERA



DELUXE WINCH



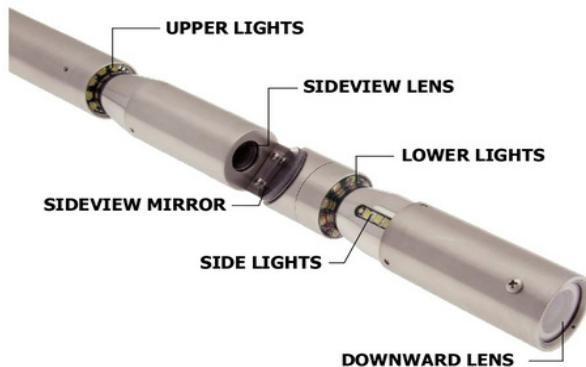
CARRYING CASE



STD SS CAMERA MOUNTED ON PAN TILT CONTROLLER



DUAL SCAN MICRO



NANO

AUSTRALIAN & NZ DISTRIBUTOR

DELUXE ELECTRIC WINCH SYSTEMS

ITEM		PART #
<i>DELUXE Base System</i>	Electric Winch/Control Panel & Carrying Case (26"x26"x22")	GS-0001
	7-Inch LCD Monitor/Sunshade, Digital Video Recorder (DVR) w/ 8 GB SD Card/Microphone	
	Powered By 110/220VAC, 50-60HZ, or from 12VDC source with supplied sine wave inverter,	
	Depth Encoder For On-Screen Depth Display (feet/meters), Emergency Winch Hand Crank,	
	Standard Centralizer, Accessory Toolbox, Field Repair/Spare Parts Kit, Manual	
<i>Cable</i>	325 FEET (100 METERS)	GS-0029
	650 FEET (200 METERS)	GS-0030
	1000 FEET (300 METERS)	GS-0031
	1650 FEET (500 METERS)	GS-0032
	2000 FEET (600 METERS)	GS-0033
<i>Camera</i>	STD Plastic Black/White (includes side-looking mirror, compass, support clamp)	GS-0009
	STD Plastic Color (includes side-looking mirror, compass, support clamp)	GS-0008
	STD Stainless Steel Color (includes side-looking mirror, compass, support clamp)	GS-0006
	STD Stainless Steel Black/White (includes side-looking mirror, compass, support clamp)	GS-0007
	Nano Color Camera (includes support clamp)	GS-0010
	Dual Scan Micro Color Camera (includes centralizer)	GS-0013
<i>Accessories</i>	Motorized Pan Tilt Controller (for STD cameras, includes centralizer)	GS-0036
	Nano Rotating Mirror Attachment (for Nano Camera only)	GS-0012
	Dual Light Holder for STD Cameras - With 2 Lights	GS-0038
	Fixed Eight Light Ring - With 8 Lights & Support Clamp	GS-0016
	Adjustable Eight Light Ring - With 8 Lights & Support Clamp	GS-0017
	Transit Tripod - to set up over large bores/shafts/vaults/pit wells, includes depth encoder mounting bracket	GS-0035
	Depth Encoder Mounting Bracket - for use with customer's tripod for large bores/shafts/vaults/pit wells	GVJR-1305
	Cable-End Replacement Kit (connector for cable to camera, epoxy, instructions)	GS-0027
	Field Repair & Spare Parts (cable end kit, voltage breakout, spare encoder/power cable)	GS-0028

1-YEAR LABOR & PARTS WARRANTY ON VIDEO CAMERA, WATERPROOF CAMERA HOUSING, SYSTEM POWER SUPPLY, CABLE WINCH AND CABLES. THE 2-YEAR LIMITED WARRANTY APPLIES TO DELUXE SYSTEMS SOLD WITH A STAINLESS STEEL CAMERA (STANDARD STAINLESS STEEL CAMERA, NANO CAMERA OR MICRO CAMERA). 2-YEAR WARRANTY EXTENDS THE STANDARD 1 YEAR WARRANTY BY 1 YEAR FOR THE FOLLOWING ITEMS: STAINLESS STEEL CAMERA, THE OPTIONAL MOTORIZED PAN/TILT UNIT, THE DELUXE WINCH AND THE SYSTEM POWER SUPPLY.