

# SHANTUI

# SE12

## Mini Excavator

LET'S MAKE CONSTRUCTION EASIER



GROUP PRODUCTS



Shantui Social

**SHANTUI CONSTRUCTION MACHINERY CO., LTD.**  
ADD: No. 58, G327 Highway, Jining City, Shandong, CHINA  
TEL: +86-537-2909369  
FAX: +86-537-2311219  
EMAIL: trade@shantui.com  
WEB: www.shantui.com

**SHANTUI**  
LET'S MAKE CONSTRUCTION EASIER

Engine: KUBOTA D782  
Power: 9.8kW/2300rpm  
Overall weight: 1200kg

High Performance in a Compact Design



# WALK-AROUND

## Boom cylinder



The boom cylinder is placed on an upper position to avoid collision.

## Accessory pipeline



The standard accessory pipeline is equipped to achieve the function of switching between unidirectional and bidirectional flow.

## Side-swinging boom



The boom swings 65° to the left and 54° to the right, enabling corner-cutting operations.

## Bulldozer blade



The width of bulldozer blade can be adjusted according to the telescoping range of chassis.

## Luffing chassis



## Foldable protective frame



It has been TOPS-certified. The height will be reduced from 2,260mm to 1,730mm after folding.

## Control box



The dual control box arrangement meets the needs of getting on and off the vehicle from both sides of the passage.

## Seat



The seat can slide forward and backward in accordance with the spatial needs of different users.

## Rear-opening seat box



The seat box can be opened to 80° for the convenience of maintenance.



## High performance

### Excellent performance

The SE12 has obtained CE certificate from TÜV Rheinland as a whole, demonstrating excellent safety, stability, and reliability. It can adapt to various working conditions, including construction for agricultural irrigation, housing construction, construction of public facilities, urban renovation, landscape gardening, construction of plastic greenhouses, and indoor operations.

The SE12 boasts the following advanced features: a hydraulic telescopic chassis, a side-swinging boom, and a foldable protective frame. With its flexibility and high efficiency, it is ideal compact equipment for various modern tasks.

### Luffing chassis

The chassis can extend and retract within a range of 830-1,000mm, which ensures good overall vehicle passability in narrow spaces under different conditions



### Side-swinging boom

The working device can swing left and right, with a left swing angle of 65° and a right swing angle of 54°. This enables it to easily handle complex environments such as narrow spaces and ensures smooth construction.



### Foldable protective frame

The protective frame is foldable, with a height of 2,245mm before folding and 1,727mm after folding, allowing it to smoothly pass through low-ceilinged operating environments and providing more possibilities for construction under different working conditions.



## Comfortable operation

### Spacious operating environment with an ergonomic control layout

The SE12 provides operators with a comfortable operating environment. Centered on the operators, it offers the optimal ergonomic design for operators of all body types.



The seat can be adjusted forward and backward to meet the different needs of operators. With ample legroom, the operation becomes more comfortable.



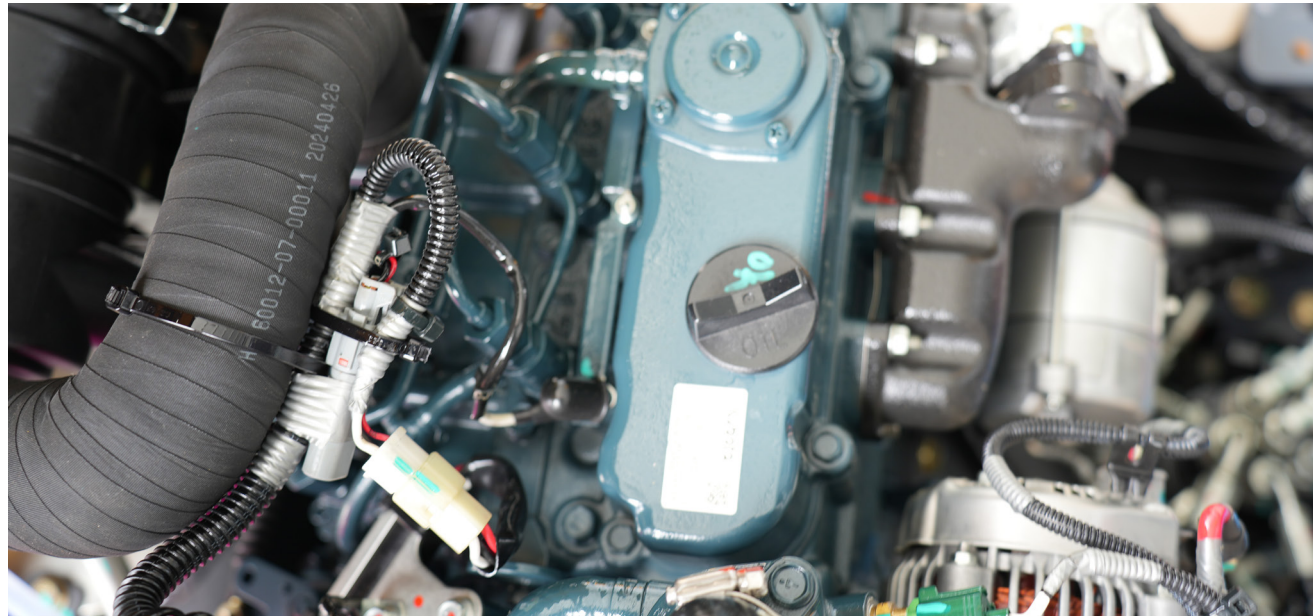
The controls are centrally arranged for convenient operation.



## Convenient maintenance

### Convenient maintenances

The rational layout of key components in SE12 delivers faster and more convenient maintenance. The air filter, fuel filter, oil filter, etc. are centrally arranged for easy operation.



#### EASY MAINTENANCE

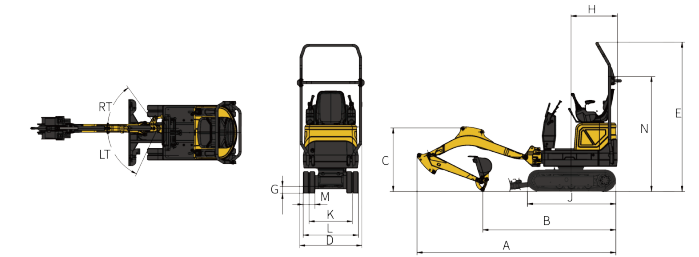
- Fuel filter
- Water separator
- Air filter
- Engine oil filter
- Engine oil level check
- Coolant
- Start motor
- DC generator
- Battery
- Main switch
- Radiator & Oil cooler

## Technical Parameters

Engine	
Model	Kubota D782
Type	Three-cylinder direct-injection
Number of cylinders	3
Emission standard	National-IV and Euro-V
Displacement	0.778L
Rated power	9.8kW/2300rpm
Hydraulic system	
Form	Triple gear pump
Rated working flow	9.2+9.2L/min
Digging force (ISO6015)	
Digging force of bucket	10.4kN
Digging force of bucket rod	5.4kN
Bucket	
Type	Backhoe
Bucket capacity	0.022 m <sup>3</sup>
Bucket width	360 mm
Traveling system	
Type	-
Number of track roller	3×2
Traveling speed	2/3.5km/h
Traction force	-
Gradeability	25°
Slewing system	
Slewing motor system	-
Slewing pressure	-
Rotating speed	0-11r/min
Braking type	-
Oil volume	
Fuel tank capacity	10L
Cooling system	3.1L
Engine oil capacity	3.8L
Capacity of hydraulic oil tank	16.3L
System capacity	-
Operating weight and grounding pressure	
Specific pressure to ground	29kPa
Operating weight	1200kg

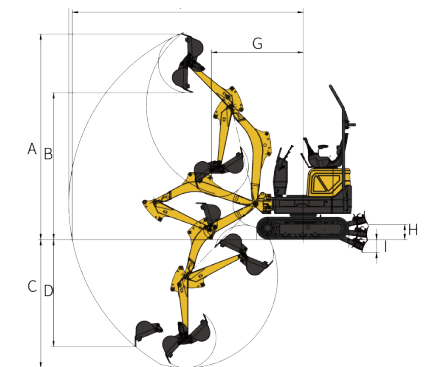
### Overall dimensions (boom: 1450mm; bucket arm: 890mm)

A	Overall length	3025
B	Grounding length (during transport)	1990
C	Overall height (to the top of the boom)	960
D	Overall width	830/1000
E	Overall height (to top of cab)	2245
F	Ground clearance of counterweight	375
G	Minimum ground clearance	102
H	Slewing radius of tail (with protective frame)	700(840)
I	Wheel track	1010
J	Track length	1335
K	Track gauge (during operation/during transportation)	650/820
L	Track width (during operation/during transportation)	830/1000
M	Width of track shoe	180
N	Height of protective frame (folded)	1727



### Operation Range

A	Max. digging height	2980
B	Maximum unloading height	2130
C	Max. digging depth	186
D	Max. vertical digging depth	1550
E	Max. digging distance	3390
F	Maximum Digging Distance at Ground Level	3340
G	Minimum Slewing Radius of working Device	1335
H	Maximum Blade Lift Height	220
I	Maximum cutting depth of bulldozer blade	188
RT	Right deflection angle of boom	54°
LT	Left deflection angle of boom	65°



\* The specifications are subject to change without notice. The pictures may include options. The actual color & appearance of the product may differ from what is shown.