

Grandeur Pan



WELS REG#
P Trap: L06704
S Trap: L06703



Scan QR code
to view our
installation notes



PG

Product Info:

- Integral pressed seat area
- Prison-grade vandal resistance
- Safety radius front edge
- Unique blockage resistant trap
- Left and right hand access panels
- 4.5/3 & 6/3 litre flush compatible
- Available with added seat (see pg 60 for options)

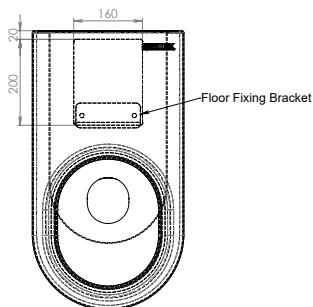
To order this item please advise:

- PGP = P Trap model
- PGS = S Trap model

NB: Seat not fitted as standard.

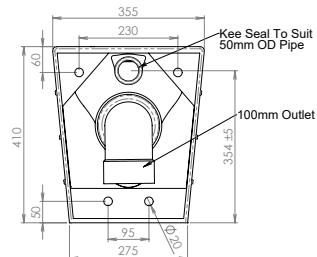
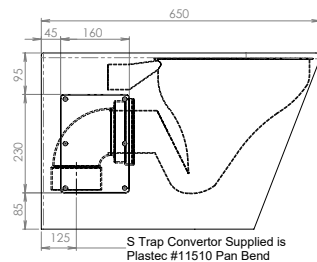
If required, please advise.

Please refer to pg 60 for seat details.

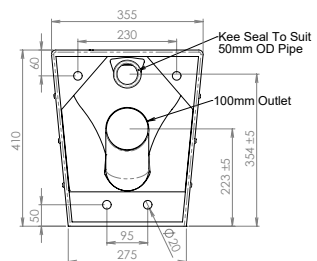
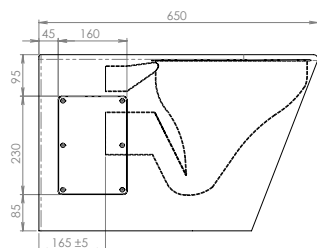


INSTALLATION NOTES

1) Pan is anchored to floor with an offset bracket (supplied). 2) Pan is secured to rear wall via 4 fixing holes integral to pan body. 3) Suggested fixings required for fixing to wall are 4pcs of 12mm dia. threaded rods with nuts and washers (not supplied). 4) Concealed fixings can be accessed by removing panels on sides of toilet pan. 5) Access panel screws are hex head type only. 6) Pan is supplied standard with concealed rear inlet to suit in-wall flushing mechanisms. 7) Pan should be sealed around perimeter after installation completed.



S TRAP



P TRAP



Due to ongoing research and our commitment to product development, details are subject to change without notice. Details accurate at time of print

Please refer to brixex.com.au for the most current product information. Allow +/- 5mm tolerance for dimensions and setouts shown in product literature.

Last Revised 2020