

Hand Truck Components

All Magliner hand trucks have a 500 pound capacity unless otherwise stated.

Frames



1

Part #300001

Straight back frame to provide structure and support to the hand truck.



2 or B

Call your dealer

Straight lattice back for general use and transporting smaller packages. (B front-mount strap; 2 back-mount strap).



3

Part #300003

Curved lattice back frame for carrying round or flat loads.



4

Part #300010

Straight back* frame with molded cross members.



5

Part #300021

Curved back* frame with molded cross members for transporting barrels and kegs.



6

Part #300032

Two straight and one (bottom) curved back* molded frame. Ideal for transporting cases on top of kegs.

* Bolted frame

Stress-Resistant Frames



C

Part #302653

Straight back.

Heavy-duty frames with wider cross members for maximum shock absorption and durability



D

Part #302660

Straight lattice back for transporting smaller packages. **302657** for use with flush mount noses.

Horizontal Loop Handles



11

Part #301000

Popular "U" loop handle is ergonomically designed to provide comfort to the wrist and easy operation of the hand truck.



12

Part #30100

Basic loop handle with "U" brace for extra load support.



18

Part #301005

Slightly angled "U" loop handle (3" higher than #11 handle).



19

Part #301008

"U" loop handle with vinyl sleeve for a comfortable grip and reduced user fatigue.

Vertical Loop Handles



15A

Part #300981
300990 for #5 frame
52" Vertical loop handle for use with 1, 2, 4, 6, B and C frames.



15C

Part #300978
300977 for #5 frame
60" Vertical loop handle for use with 1, 2, 4, 6, B and C frames.



60

Part #300994
Vertical loop for Hi-U extension for use with 1, 2, 4, 6, B and C frames. **300995** for #5 frame. (Hi-U available in 55", 60" and 68" heights)



22

Part #30102

"U" handle with vinyl sleeve and "U" brace for higher loads.



24

Part #301001

Loop handle with straight top surface.

Double Loop Handles



25A

Part #301129

52" double vertical loop provides the operator a comfortable grip in various positions.



25B

Part #301115

55" double vertical loop provides the operator a comfortable grip in various positions.



25C

Part #301119

60" double vertical loop provides the operator a comfortable grip in various positions.



35B

Part #302297

55" bolted dual grip increases control and offers multiple hand positions.



35D

Part #302298

62" bolted dual grip increases control and offers multiple hand positions.



36

Part #301170

Bolted dual grip handle with vertical post is 62" high and aids in the movement of tall loads.

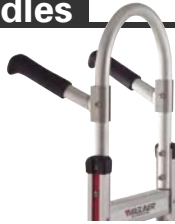
Double Grip Handles



16

Part #86031

Standard double pistol grip handle. Handles are curved out for operator comfort and two-handed control.



30

Part #301137

52" welded double grip handle is angled out to meet the operator's hands.



13A

Part #301011

52" straight loop with cross brace and welded pin handle.



13B

Part #301126

55" straight loop with cross brace and welded pin handle.



13C

Part #301127

60" straight loop with cross brace and welded pin handle.



17

Part #301004

52" straight loop handle with welded pistol grip on top for easier leverage.

Single Grip Handles

Noses



AM

Part #300200

Die-cast magnesium with recessed heel is 14" wide x 7-1/2" deep.



HM

Part #300197

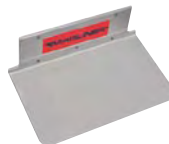
Die-cast magnesium with recessed heel is 14" wide, 12" deep.



UM

Part #300201

Die-cast magnesium with recessed heel is 18" wide, 7-1/2" deep.



E1

Part #300244

Extruded aluminum 14" wide available with recessed heel 7-1/2" deep or flush mount 9" deep.



E2

Part #300254

Extruded aluminum 14" wide x 9" deep (flush mount only).



G1

Part #300245

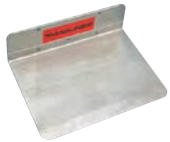
Extruded aluminum 18" wide available with recessed heel 7-1/2" deep or flush mount 9" deep.



G2

Part #300248

Extruded aluminum 18" wide x 9" deep (flush mount only).



K1

Part #300203

Extruded aluminum 16" wide x 12" deep; 4-1/2" high (flush mount only).



K2

Part #300215

Extruded aluminum 20" wide x 12" deep; 4-1/2" high (flush mount only).



E3

Part #300544

High-strength steel 14" wide available with recessed heel 7-1/2" deep or flush mount 9" deep.



E4

Part #300554

High-strength steel 14" wide x 9" deep (flush mount only).



G3

Part #300545

High-strength steel 18" wide available with recessed heel 7-1/2" deep or flush mount 9" deep.



G4

Part #300548

High-strength steel 18" wide x 9" deep (flush mount only).

Innovation That Delivers



Hand Truck Components

Wheels



815

Part #10815

8" mold-on rubber on die-cast magnesium hub with double-groove ball bearings. Hard, puncture-resistant rubber works well on smooth to semi-smooth surfaces.



825/1025

Part #11825/111025

8" or 10" puncture-resistant, solid, rubber tire on one-piece polyolefin hub with double-groove ball bearings.



830/1030

Part #10830/101030

Strong, one-piece polyolefin hub with 8" or 10" puncture-resistant, shock-absorbing, non-marking balloon cushion tires and double-groove ball bearings.



850

Part #12850

8" pneumatic tires with double-groove ball bearings and three-piece hub. Pneumatic wheels work best on uneven and rough surfaces.



1010

Part #131010

10" puncture-resistant microcellular foam tire with sealed semi-precision ball bearings – never goes flat and performs like a pneumatic tire but doesn't require air!



1060

Part #121060

4-ply rated, 10" pneumatic tube-type tire with sealed semi-precision bearings and corrosion-resistant hub. Excellent shock absorption.

Magliner Comparative Wheel Data

This chart is designed to provide hand truck users with information to best match wheel performance with specific application.

	815	825	830	850	1025	1030	1010	1060
Capacity (per wheel)*	250	250	300	330	250	300	250	350
Force to start rolling (lbs.)	14.2	19	11.4	14.4	24	11.5	16.9	12.2
Force to cont. rolling (lbs.)	10.2	17	9.3	11.5	22	9.4	14.3	9.1
Repairable	bearing only	No	No	Yes	No	No	No	Yes
Durability (1 to 10 scale)	8	6	8	8	6	8	8	10
Weight (lbs.)	1.9	3.2	2.6	2.9	5.8	3.5	4.5	4.6
Bearing life vs. industry standard**	2 x longer	2 x longer	2 x longer	2 x longer	2 x longer	2 x longer	3 x longer	5.7 x longer
Overall Performance Rating (1 to 10 scale)	7	6	9	8	6	9	8	10
Recommended Uses	S, G	S, G	S, G, F, D	S, F, R	S, G	S, G, F, D	S, G, F, R, D	S, G, F, R, D

Testing based on Magliner hand truck with a 500 pound load on a smooth surface.

* Reference only, never exceed rated hand truck capacity.

** Bearing life based on lab testing under accelerated conditions compared to average single-groove bearing.

S = smooth/semi smooth surfaces - hard surfaces

R = rough, uneven surfaces - dirt, sand, gravel

G = general purpose

D = route delivery

F = delicate floor protection, tile, carpet

Hand Truck Accessories

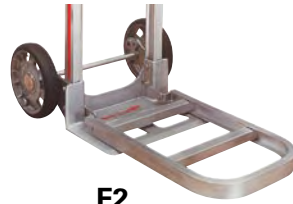
Folding Noses 300 Pound Capacity



F1

Part #301019

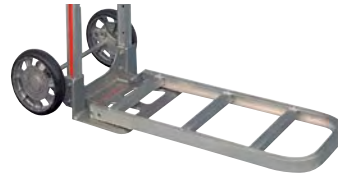
24" length x 12" wide low-profile formed plate extension.



F2

Part #301025

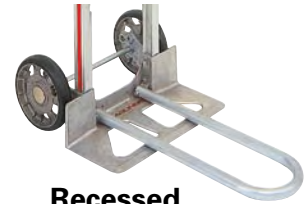
20" length x 12" wide extruded aluminum channel extension.



F3

Part #301026

30" length x 12" wide extruded aluminum channel extension.



Recessed Folding Nose

Part #302480

22" long x 9" wide tubular aluminum. Requires special frame, call your dealer.

Accessory Bags



Part #302680

- Overall: 13" long x 8" wide
- Main pocket 12" long x 8" wide x 2" deep with 1 Velcro strap
- Outside pocket 5-1/4" long x 5-1/2" wide
- **Perfect for hand-held parcel computers**



Part #302681

- Overall: 16-1/2" long x 12" wide
- 2 top pockets, sealed with Velcro 10" long x 6" wide
- 1 tool pocket 12" wide x 3-1/2" deep
- **Great for vending supplies**



Part #302682

- Overall: 18" long x 12" wide
- 1 pocket 11" deep x 9" wide
- Holds a 10" high x 20" diameter can
- 1 tool pocket 12" wide x 3-1/2" deep
- **Designed to carry food service splits**



Part #302683

- Overall 29" long x 12" wide
- 2 top pockets, sealed with Velcro 10-1/2" long x 6" wide
- 1 tool pocket 12" wide x 3-1/2" deep
- 1 pocket 11-1/2" wide x 12" deep
- **Ideal for tools, cleaning supplies and clip boards**

Stair Climbers



C1

Part #86027

Heavy-duty cast magnesium sliders. Great for moving over curbs or stairs.



C5

Part #86006

Cast magnesium sliders with replaceable low-friction polymer skid bars. Tough and quiet.



Padded Hi-U Brace Cover

Part #302497

Protective nylon-covered foam pad cushions arms and shoulders, reducing injuries.

Hi-U Frame Extensions
52/55/60/62/68

Call your dealer

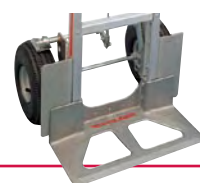
Hi-U frame extensions available in 52", 55", 60", 62", and 68" heights - adds height for taller loads.



Wheel Guards

Part #301114K

Protect loads from rubbing against hand truck wheels and help keep loads cleaner.



Sliding Keg Hook

Part #32511 4"

Part #32513 5"

Holds keg in place securely then swings out of way when not in use. 4" hook used with a straight side keg and 5" is used with the "barrel-style" keg. For use with 5 frame only.



Keg Hook

Part #301121

Holds keg in place securely; for use with 5 or 6 frame.



Folding Nose Plate



500 pound capacity
Call your dealer

E1 and G1 aluminum extruded noses fold flush with frame when not in use.

Innovation That Delivers