

Cleaning Technology · Municipal Technology

**Hako**

Clean ahead

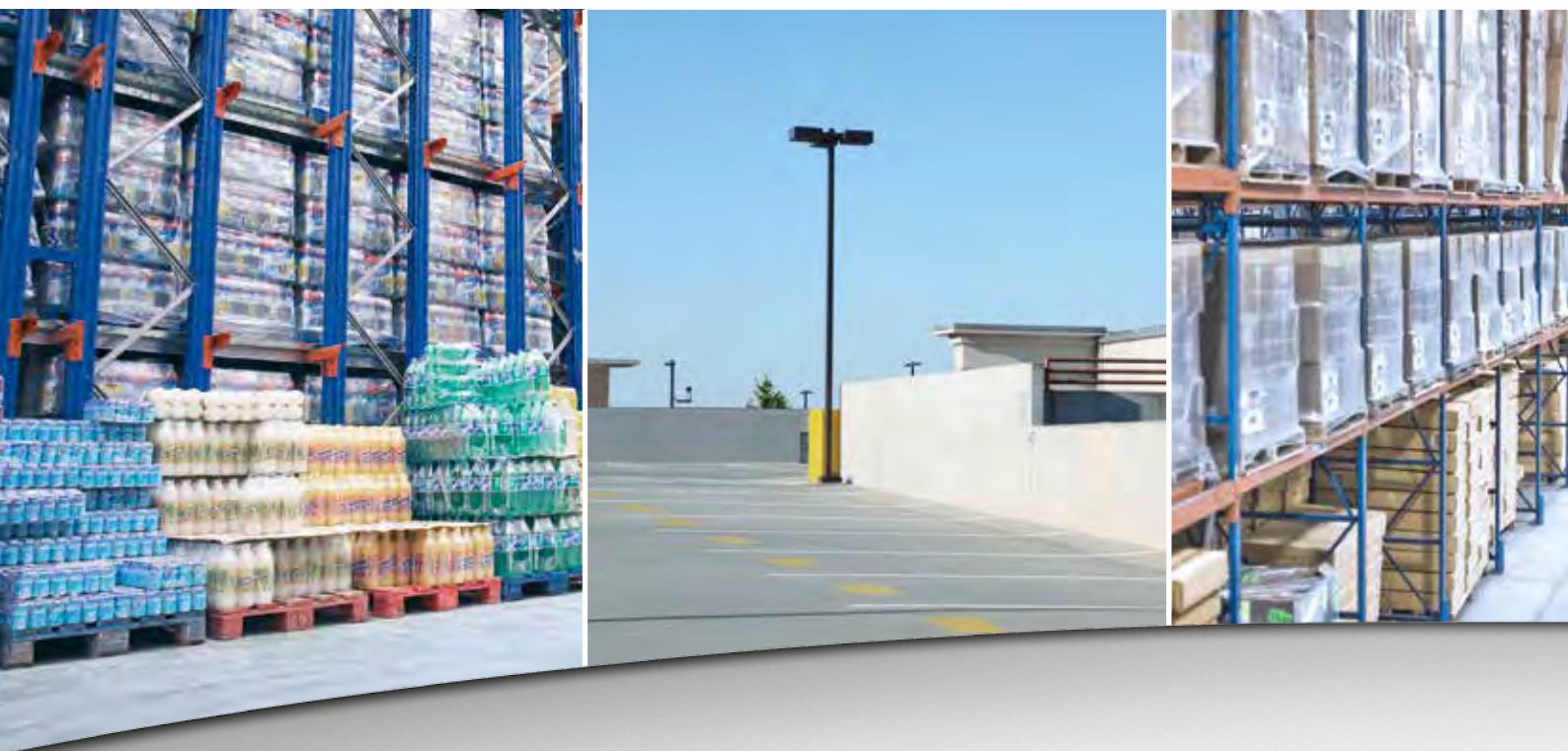


## **Sweepmaster 1200/1500 RH**

*For the economic cleaning  
of large company premises*

Ride-on sweepers for up to 16,200 m<sup>2</sup>/h area coverage

## Sweepmaster 1200/1500 RH



### Simply improve your sweeping

#### **Perfect cleaning of commercial premises**

Powerful, intelligent and durable:  
By choosing the Sweepmaster 1200 RH and Sweepmaster 1500 RH, you are making a decisive step towards improving performance and efficiency with regard to the cleaning of industrial and commercial premises. Providing an area coverage of up to 10,300 m<sup>2</sup>/h (Sweepmaster 1200 RH) or up to 16,200 m<sup>2</sup>/h (Sweepmaster 1500 RH), both Sweepmaster models are firmly positioned in the top category of ride-on sweepers. Both vehicles are perfectly suited for the quick and particularly efficient dust-free sweeping of warehouses and production plants as well as hard-surfaced outdoor facilities. Capable of overcoming steep slopes,

they have sufficient power reserves to enable their deployment for cleaning multi-storey car parks ramps.

#### **Quality for long-term reliability**

Choosing Hako is not only an investment in quality but also in a durability and reliability. Highest levels of availability and a long service life were placed in the foreground at the construction phase in the case of the Sweepmaster 1200 RH and Sweepmaster 1500 RH. The solid outer frames of the machines were made of steel and, as opposed to other materials, can withstand harder impacts. As with all painted steel parts, it is provided with an extremely durable 2-layer anticorrosive and thus fulfils the highest demands in respect of quality.



### Excellent efficiency

As all Hako machines, the Sweepmaster 1200 RH and Sweepmaster 1500 RH are designed with efficiency and ease of repair in mind. For maintenance purposes and service work, the entire user platform can be pivoted open simply and easily without the need for any tools. The intelligent diagnostics system in the Sweepmaster 1500 RH provides additional help for error analysis and fault location in the case of faults. This saves both time

and costs. Efficient petrol, diesel and LPG drives as well as powerful battery systems ensure long operating times due to their low consumption. Filter systems with long service lives and large containers provide the basis for long, uninterrupted work. This increases efficiency. A long service life and high resale value are positive assets on the balance sheet.



Up to 10,300 m<sup>2</sup>/h area coverage

## Sweepmaster 1200 RH



Sweepmaster P1200 RH

### Well-conceived technology for extreme flexibility

The Sweepmaster 1200 RH is fitted with all the equipment and functional features of its bigger brother but is operated manually by means of easy-to-use levers and switches. Available as petrol, liquefied petroleum gas, diesel or battery-powered models, all types of demanding indoor and outdoor deployment are possible. The operating time of the battery-powered models is max. 5 hours and combustion engine models up to 10 hours. This enables optimal deployment of both machine and personnel meaning that the cleaning of commercial premises is even more efficient with Hako!

#### 1) Simple operation

The cockpit: Good visibility to the front and ergonomic operating elements

#### 2) Easy access

The main cylindrical brush can be disassembled without any tools



Up to 16,200 m<sup>2</sup>/h area coverage

## Sweepmaster 1500 RH



Sweepmaster P1500 RH  
with optional cab safety roof



### That certain something

The Sweepmaster 1500 RH fulfils all the requirements to ensure many years of economic use under difficult working conditions. Its effective sweeping unit, high performance filter system and powerful motors, diverse drive systems and simple, electronically supported single-button operation make the Sweepmaster 1500 RH the ideal universal sweeper vehicle for industrial and commercial sweeping tasks. The large side brooms sweep debris effectively to the main cylindrical brush and complete their tasks reliably even when cornering and sweeping out corners. The sweeping system operates according to the overhead sweeping principle so that the dirt hopper is always completely filled – ensuring long operating times without interruptions!



#### 1) Robust chassis and collision protection

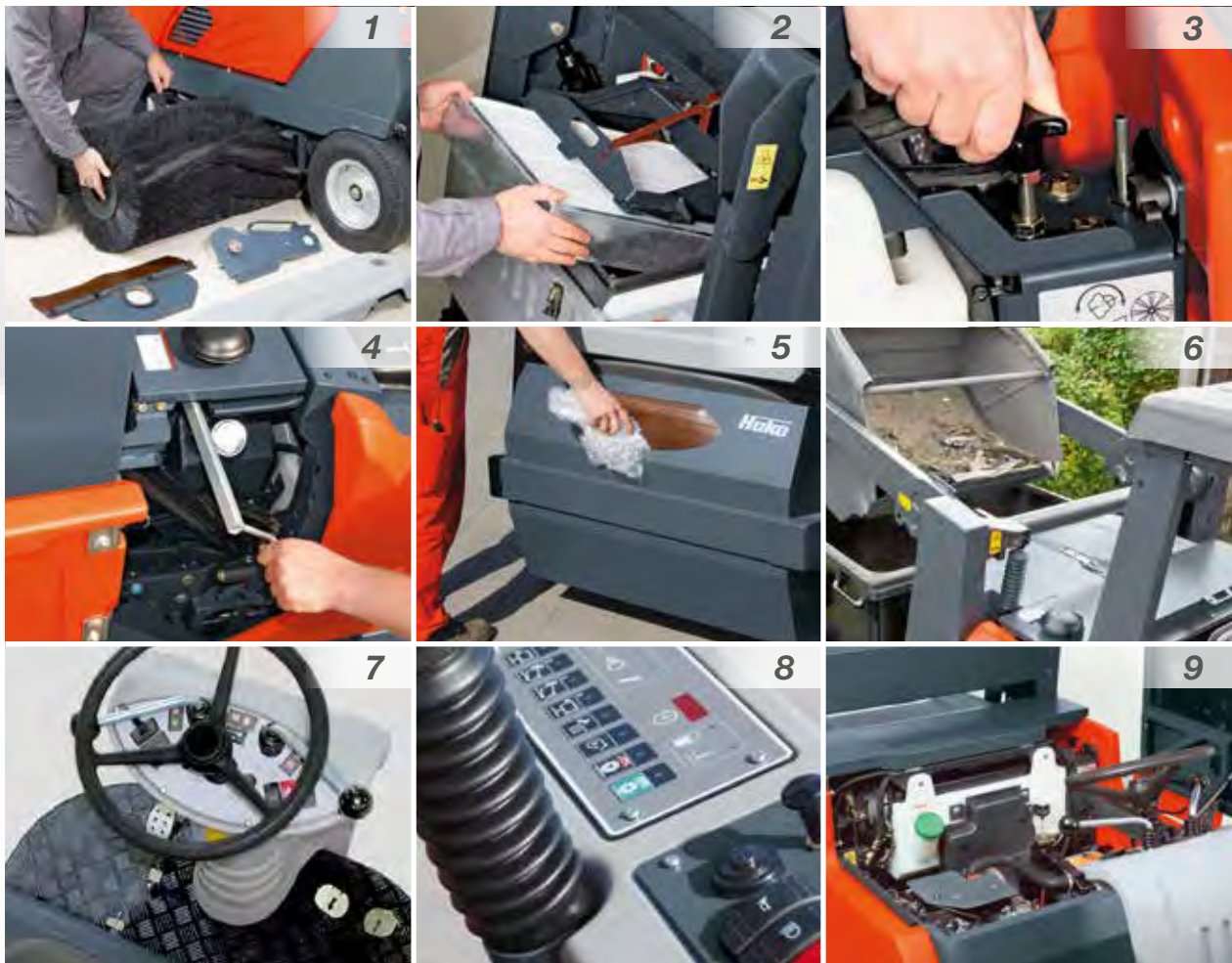
Solid base and protection for the brush from damage – highest levels of machine availability

#### 2) Simple maintenance

The user platform can be pivoted up or forward for service work

Well-conceived, down to the last detail

## The Sweepmaster 1200/1500 RH, convincing and with many advantages



### 1) Cylindrical brush

Protective guard against bearing damage when sweeping up foil or tape; change cylindrical brush without tools

### 2) Clean exhaust air

and long operating times thanks to the cassette filter system with large filter surface and R<sup>2</sup>S filter cleaning technology (Hako patent)

### 3/4) Wear compensator

Simple adjustment of the main cylindrical brush using the ABBA system (automatic hopper-brush adaptation) for perfect sweeping over the entire service life of the cylindrical brush

### 5) Debris flap (Sweepmaster 1500 RH)

to insert larger items, foil or tape; when thrown in, no dust can escape from the hopper flap

### 6) Hydraulic hopper lift

The dirt hopper can be raised for emptying to a height of 1.52 m

### 7) Clear operational concept

for more safety and short training periods for operating personnel

### 8) Single-button operation (Sweepmaster 1500 RH)

Simple operation using the green Hakomatic button

### 9) Quick service access

Easy access to the technical system minimises downtimes

## Sweepmaster at a glance

Technical Data *	P1200 RH	D1200 RH	B1200 RH	P1500 RH	D1500 RH	B1500 RH
Drive	Petrol/LPG	Diesel	Battery	Petrol/LPG	Diesel	Battery
Max. output	11,9 kW	9,8 kW	4,3 kW	15 kW	14 kW	6 kW
Sweeping width/ with 1 SB/2 SB	80/115/147 cm	80/115/147 cm	80/115/147 cm	92/127/162 cm	92/127/162 cm	92/127/162 cm
Sweeping performance with 1 SB	10,300 m <sup>2</sup> /h	10,300 m <sup>2</sup> /h	9,200 m <sup>2</sup> /h	12,960 m <sup>2</sup> /h	12,960 m <sup>2</sup> /h	10,400 m <sup>2</sup> /h
ABBA wear compensation	•	•	•	•	•	•
Dirt hopper volume	130 l	130 l	130 l	250 l	250 l	250 l
Dumping height	142 cm	142 cm	142 cm	152 cm	152 cm	152 cm
Filter surface	5,0 m <sup>2</sup>	5,0 m <sup>2</sup>	5,0 m <sup>2</sup>	7,5 m <sup>2</sup>	7,5 m <sup>2</sup>	7,5 m <sup>2</sup>
R <sup>2</sup> S filter cleaning system	•	•	•	•	•	•
Working speed	9 km/h	9 km/h	8 km/h	10 km/h	10 km/h	8 km/h
Climbing capacity	18 %	18 %	16 %	18 %	18 %	16 %
Weight, ready to use	763 kg	784 kg	920–1,100 kg	1,100–1,350 kg	1,100–1,350 kg	1,465–1,750 kg
Width x Length	1,142 x 1,998 mm	1,142 x 1,998 mm	1,142 x 1,998 mm	1,335 x 2,230 mm	1,335 x 2,230 mm	1,335 x 2,230 mm
Height (with cab roof)	1,520 (1,999) mm	1,520 (1,999) mm	1,520 (1,999) mm	1,596 (1,980) mm	1,596 (1,980) mm	1,596 (1,980) mm

We reserve the right to make technical improvements to machines with regard to shape, colour and design without notice. Illustrations could contain optional equipment.

## The perfect machine for every task

### Special equipment for special demands

No one task is identical to another. Therefore, we do not simply provide a variety of drives and sweeping width. By adding special equipment, such as a particle filter complying with TRGS 554 for the diesel or a cab safety roof, a second left-hand side broom, a lighting system compliant with road traffic licensing regulations (StVZO) or a flashing beacon and numerous other accessories, you can assemble precisely the machine you need!

### Attractive services at attractive conditions

Your investment in Hako pays dividends after just a short time – e.g. through the high level of reliability and low operating costs throughout the machine's entire service life. Hako service options enable you to calculate success even more accurately: The Hako Full Service and Service Contract, available under attractive conditions, ensure fully calculable maintenance costs, comprehensive machine cover and maximum availability at all times!

*Simply ask your Hako representatives about our extras and services – they will be pleased to help!*

# Hako

Clean ahead



### **Hako: environmental-friendly right from the start**

It is our legacy to leave behind a clean planet. That is why resources-, environmental- and climate protection characterizes each and every process at Hako which has been certified by independent institutions. Learn more about our on-going commitment at [www.hako.com](http://www.hako.com).

### **Everywhere and close by**

Our efficient sales & service network guarantees close proximity and rapid help - worldwide.

### **Cleanliness combined with safety**

Our machines meet the highest standards. Reliable quality "Made by Hako."

### **Buying, leasing, renting**

We offer you many individual and attractive financing options.

### **We are available 24/7**

Hako's spare part express-and on-call service guarantees best possible availability.

BLUECOMPETENCE

Alliance Member

Partner of the Engineering Industry Sustainability Initiative



DIN EN ISO 9001:2008  
DIN EN ISO 14001:2009

Hako Australia Pty Ltd  
Tel.+61 28756 4700  
Fax.+61 28756 4799  
[hksales@hakoaustralia.com.au](mailto:hksales@hakoaustralia.com.au)  
[www.hakoaustralia.com.au](http://www.hakoaustralia.com.au)