



CAPACITOUCH 4K FRONT VIEW

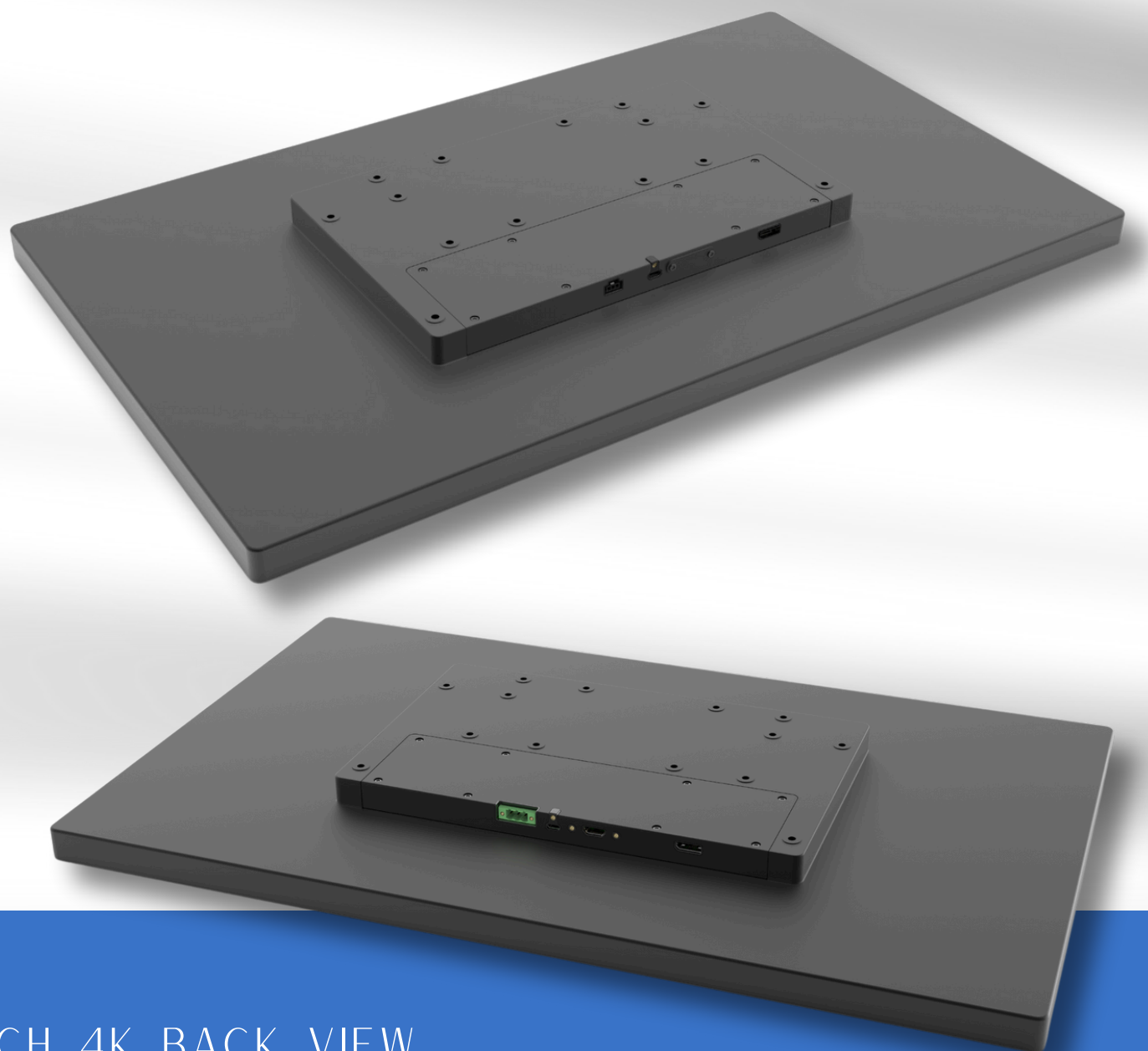
CAPACITOUCH 4K CLARITY FOR CRITICAL MOMENTS

Medical grade monitor, meets safety requirements for clinical use and has a variety of inputs and display options for smooth integration into modern medical workflows. This provides medical professionals with clear images from all medical cameras and other medical imaging modalities with 4K resolution.

Designed for sterile environments this fanless design is silent, sleek and robust. Beautifully bright colours and glass touchscreen enhances any work environment.

FEATURES

- IP66 rated
- Industrial Grade IPS Display Panel with a resolution of 3840x2160
- 4k resolution
- Power input from 18-36Vdc
- User modes for different settings
- Chemically hardened 2.0mm low reflection cover glass



CAPACITOUCH 4K BACK VIEW



CAPACITOUCH 4K FRONT VIEW

SPECIFICATIONS SUMMARY

SPECIFICATIONS	DISPLAY CAPACITOUCH 4K
DISPLAY SIZE	IPS 27.0-INCH
RESOLUTION	3840X2160
BRIGHTNESS	500 CD/M ²
VIEWING ANGLE	+/- 89 DEG. (TYPICAL) (UP/DOWN, LEFT/RIGHT)
ASPECT RATIO	16:9
VIEWING ANGLE	+/- 89 DEG. (TYPICAL) (UP/DOWN, LEFT/RIGHT)

SPECIFICATIONS	DISPLAY BACKLIGHT
BRIGHTNESS	500 CD/M ² , MIN 450 CD/M ²
OPERATING LIFE	87600 HOURS, TA = 25 DEG. C, NOTE 2
POWER CONSUMPTION	42V*16*0.040MA=27W

CERTIFICATIONS	
EMC CERTIFICATION	<p>CE-EMC Medical Equipment: IEC 60601-1-2: 2014+A1:2020 CSV EDITION 4.1</p> <p>FCC: CRF TITLE 47 PART 15 SUBPART B – SECTION 15.107 AND 15.109, CLASS B ANSI C63.4-2014</p> <p>Canadian IC: IC REGULATION ICES-003: ISSUE 7</p>