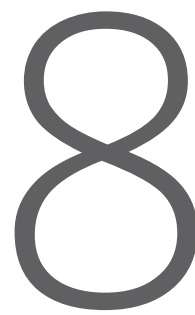


# SUPA<sup>///</sup>LINE

Premium decorative wall and ceiling feature panel system

Graceful curve effects • Robust and low-maintenance • Easily conceal access points



reasons  
designers  
choose  
**Supaline**

Supaline is ideal  
for applications  
such as:

- > Feature walls or ceiling
- > High traffic areas such as lobbies, receptions areas, atriums and passageways
- > High activity area such as multi-purpose halls and sports centres
- > Decorative panels for pillars or beams
- > Office partitions



#### Flexible

Concave, convex and S-curves are all possible.



#### Fast

A panel system for quick on-site installation.



#### Easy

Simple to specify with shop drawing service if required.



#### Attractive

Huge range of beautiful finishes



#### Robust

Excellent durability and low maintenance.



#### Effects

Add grooved and routed effects for unique patterns.



#### Access

Ideal for concealing service access in ceilings and walls.



#### 3D

Framing for 3D shapes also supported.





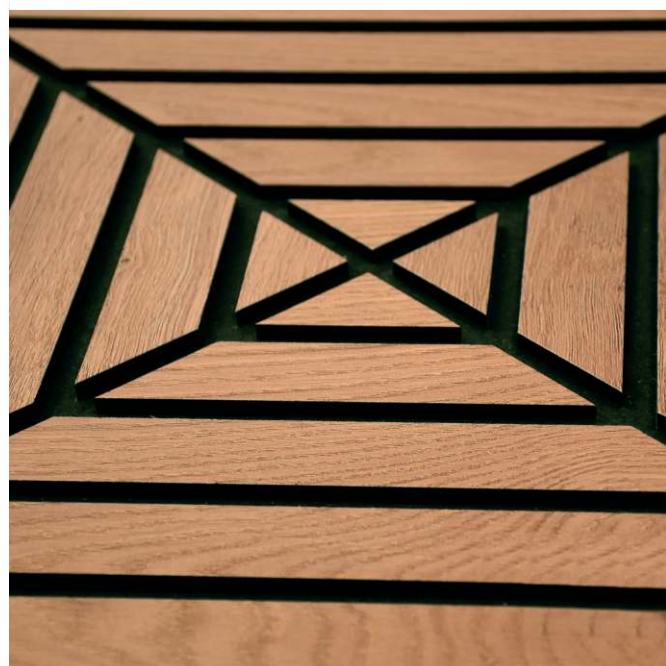
▲ SUPA VENEER panels form a faceted wall in a uni lecture theatre.



▲ SUPA VENEER Hoop Pine curved panels under the exterior eaves of a multipurpose school hall.



▼ SUPA COLOUR panels form a durable and attractive entry to a city building with extra wide joints and matching backing strips.

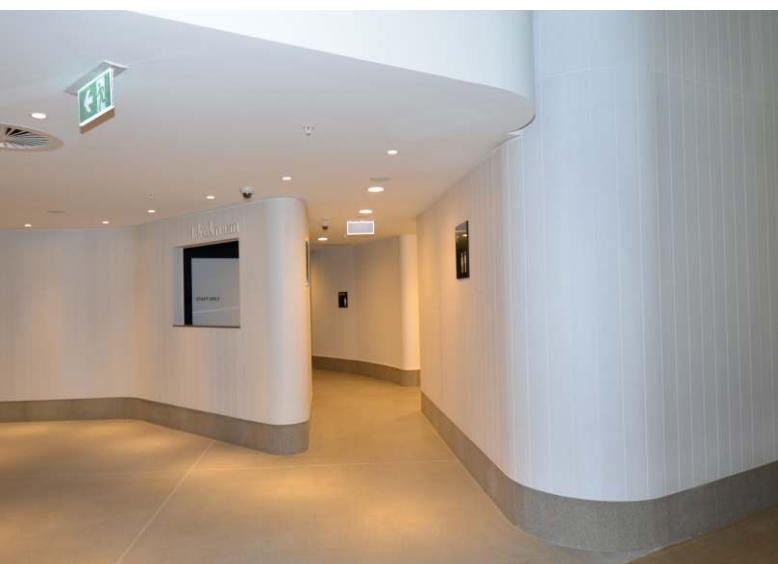
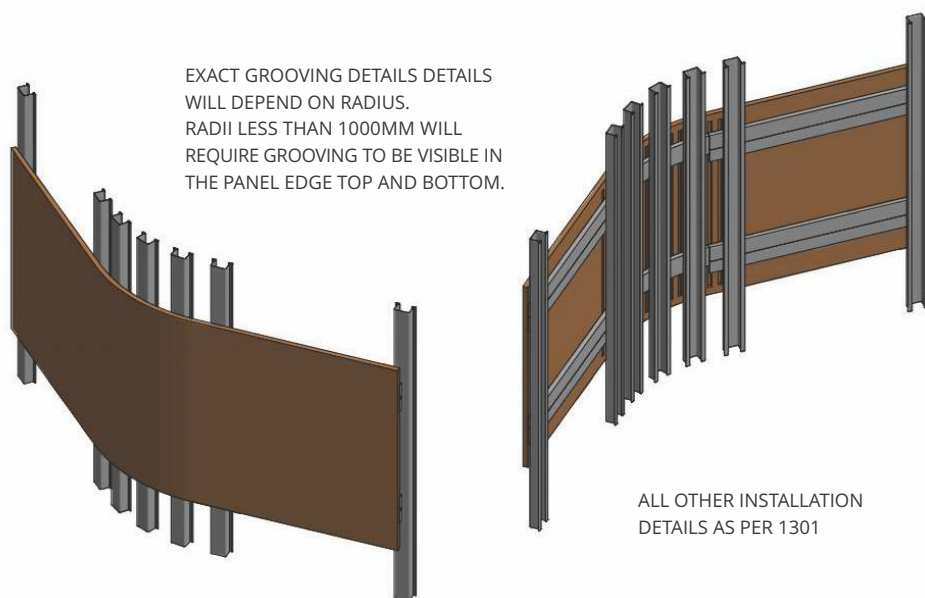


▲ SUPA LINE grooved

# The easiest way to put curves in any interior panel design

When designers want graceful and sophisticated curved effects they turn to Supaline.

This unique, decorative panel system lets you quickly, easily and affordably create smooth concave and convex designs — or even S-curves — without ever worrying about unsightly bulges.



If you can **imagine** it, it's possible with SUPALINE

# The technical details

## Panel fixing

- › Concealed fixing system
- › Direct fixing systems

## Substrate options

- › Meets Green Star requirements
- › Fire Group 1 and 2 options available

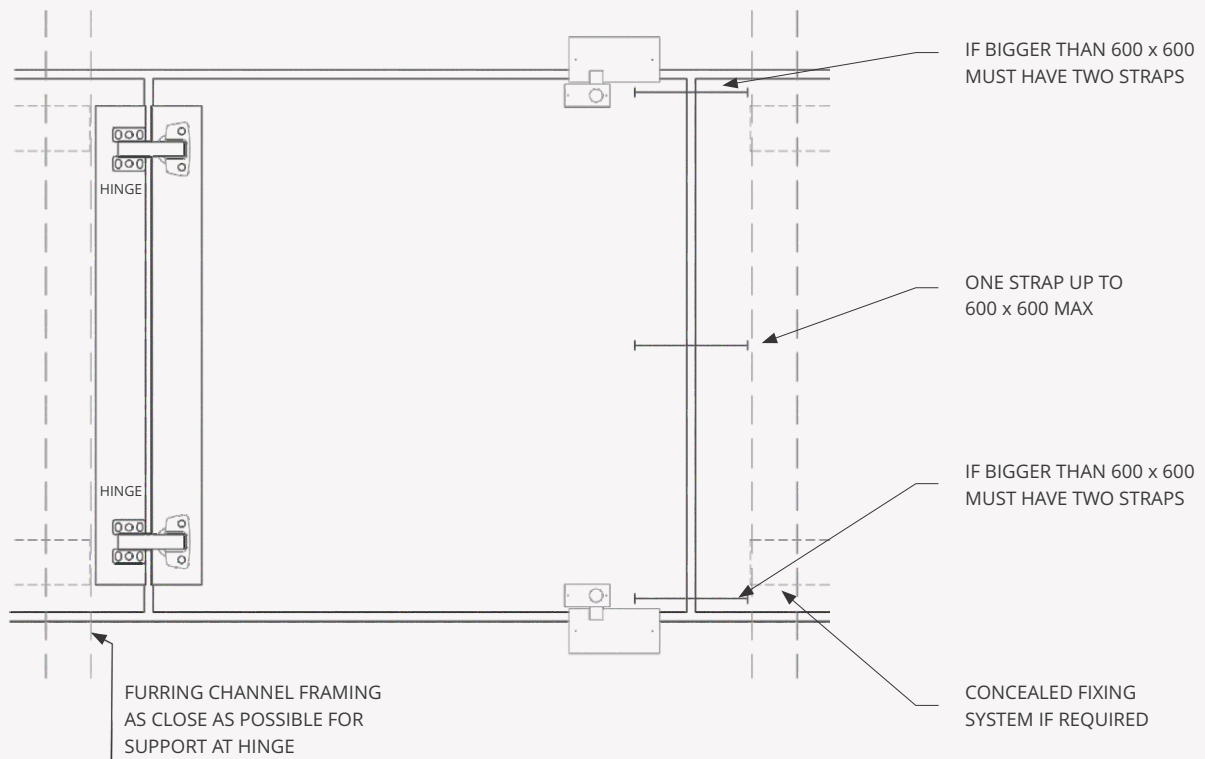
## Panel lengths

- › Max panel length (Supafinish): 3600mm
- › Max panel length (for popular veneers): 3000mm
- › Max panel length (most other veneers): 2700mm

Note that if a plywood or FR substrate is needed, the maximum length is usually 2400mm.

## Access panels

- › Always include as part of the design process. Far more difficult to 'retro fit'.
- › Fully integrated access panels. Complete kit which includes concealed latch, hinges, escutcheon.





# Supaveneer natural timber finishes

There's nothing quite like natural timber veneers to create warmth, depth and aesthetic interest. But they also have a complex personality, capable of dramatic variations between batches.

Supawood can not only guide you through the potential pitfalls, our expertise can help identify correctly toned veneer options that are more economical than those veneer suppliers provide.

## Highlights

- › Native, imported or reconstituted natural timber veneers
- › No on-site VOC's
- › Zero VOC emissions

**SUPA** VENEER  
(NTV) Natural Timber Veneer

Other species and more affordable veneers also available.



Hoop Pine  
CC



Tasmanian  
Oak 1/4



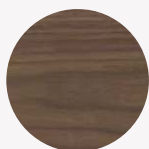
Blackbutt  
1/4



American  
Oak CC



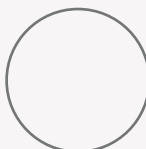
Spotted  
Gum 1/4



American  
Walnut CC



Midnight  
Black



or any other species  
(your choice)

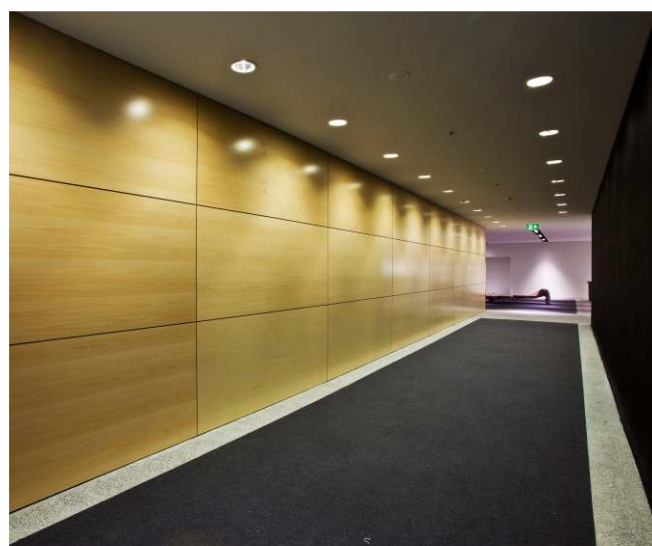
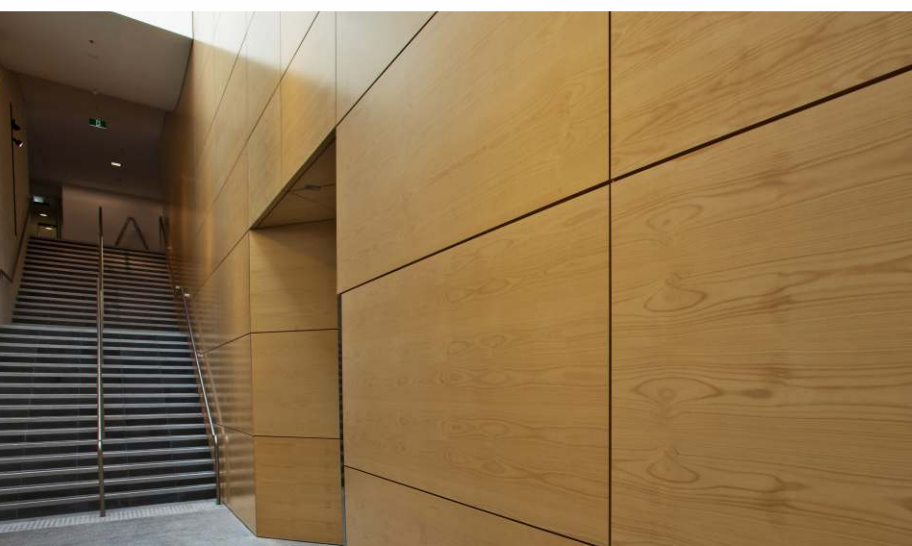
If you can **imagine** it, it's possible with SUPALINE



^ SUPAENEER form a curved wall in the foyer of a school performing arts theatre.



^ SUPAENEER Anegre natural timber veneer panels create a warmth in the multi-award winning library building of a girls school.



^ SUPAENEER Hoop Pine offers a durable finish in the high traffic area of a university building. These panels were part of a project that won The Timber Development Association "Best Use of Decorative Veneers - National" and "Interior Fit-out-National" in 2009.

# Supacolour 2-pack solid colour

Supacolour is our premium finishing system for solid colours.

We use qualified French Polishers with an average of more than 20 years spraying experience so finished panels are silky smooth to the touch, blemish-free, and have incredibly consistent gloss and colour levels.

## Highlights

- › Choose any solid colour in any Australian paint selector range
- › 25 metallic finishes
- › Wide range of gloss levels
- › Resists abrasion, graffiti and dents
- › Easy-maintenance. wipe-clean surface
- › Does not fade due to age or light
- › No on-site VOC's
- › Zero VOC emissions

**SUPACOLOUR**  
(SCR) Painted Finish

Highly durable satin, high gloss and metallic finishes matched to any colour.



**MATCH TO  
ANY COLOUR  
REFERENCE**

## METALLIC COLOURS



Platinum



Antique  
Silver



Silver



Gold



Old Gold





▲ SUPACOLOUR panels in 3 shades of Red line one side of a passageway in a performing arts centre.

▼ SUPACOLOUR Metallic Gold panels used to create the faceted ceiling of an airport's luxury retail mall.



▲ SUPACOLOUR Satin White panels provide a durable entrance lobby to a commercial development while also reflecting light throughout the space.



▲ SUPACOLOUR panels form a Red curved pillar around the lift shaft in the foyer of a data centre.

# Laminates

## Highlights

- > Economical without compromising quality
- > Extremely durable, impact resistant and easy to maintain
- > Apply to panel edge for a seamless square join
- > Timber veneer appearance without grain, shade and gloss variations
- > Zero VOC emissions

## SUPAFINISH (SF) Concept Veneers & Colours

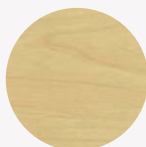
This laminate perfectly matches our slat and beam products. Group 1 Fire Retardant available even in slats and beams.



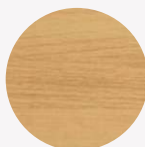
Hoop Pine  
Limed SF



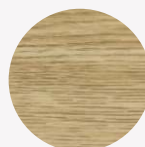
Hoop Pine  
Classic SF



Fusion  
Maple SF



Euro  
Beech SF



Tasmanian  
Oak SF



Blackbutt  
SF



Spotted  
Gum SF



Smooth  
Mahogany SF



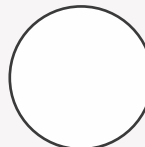
Cracked  
Cherry SF



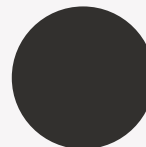
OSB  
SF



Matt  
Silver



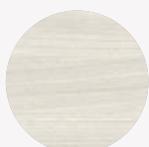
White  
SF



Black  
SF

## SUPASURFACE

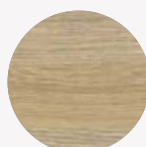
A wide range of rustic and realistic timber finishes at a budget friendly investment.



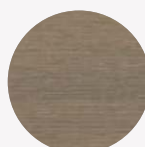
Bleached Wood  
SS-RBIW



Soft Cream  
SS-RSoW



Oak  
RNO



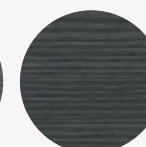
Spotted  
Oak RSO



Cocoa  
RCA



Charred Graphite  
SS-RCH



Wenge  
SS-RBWe

If you can **imagine** it, it's possible with SUPALINE





▲ SUPAFINISH Hoop Pine wall panels create a spectacular stepped effect on the side walls of the theatre of a performing arts centre.



▲ SUPAFINISH Silver and Hoop Pine form a chequered effect along the corridor in a primary school.



▲ SUPAFINISH White grooved and curved panels line the ceiling of a shopping mall.



▲ SUPAFINISH Euro Beech wall panels set on an angle line the walls of a school theatre.





Click here to download our Specification  
Wording and Technical Details

Global technology and know-how.  
Local manufacturing and support.

SUPAWOOD are market-leading experts in lining and panelling systems. Contact us and find out how we can help bring your next project to exciting, vivid life.

**SUPAWOOD**  
ARCHITECTURAL LINING SYSTEMS

**SUPAWOOD HEAD OFFICE**

Australasian Support & Manufacturing  
Aus: +61 1800 002 123  
NZ: +64 (0) 9887 3234  
sales@supawood.com.au

**SUPAWOOD UK**

UK & EU Support & Manufacturing  
+44 (0) 3307 00 00 30  
sales@supawood.co.uk

SUPAWOOD.COM.AU

As **adaptable** as your *imagination* ...