

One Imaging Platform, Vast Applications

Safer, Innovative Imaging With More Applications

VIMAGO GT30 Pico



Diagnostic
Interventional
Intraoperative

Quality
Efficiency
ROI

Highest Resolution Clinical 3D Imaging
Consistent Resolution From Every Angle
3D Pixels - Isotropic Voxels | No Interpolation
Equivalent Contrast To Conventional CT
Dynamic Fluoroscopic Studies



EPICA
ANIMAL HEALTH

High Definition Volumetric Imaging,
Digital Radiography **and** Fluoroscopy

REVOLUTIONIZE YOUR
PRACTICE

HDVI

Vimago™ GT30 Pico Image Quality

High Definition Volumetric Imaging is a major innovation in Computed Tomography. It is executed by creating a 3-dimensional map of densities in the scan area with isotropic voxels that have equal resolution in all planes. Unlike standard CT systems, Epica's Vimago™ utilizes non-interpolated data which represents the anatomy exactly as it is. Standard CT systems utilize interpolated data which is the outcome of computational approximations needed to fill gaps in data. Vimago™ HDVI technology provides clearer, higher accuracy visualizations of anatomy and lesions not previously possible in diagnostic imaging.

Practice Efficiency

Vimago™ GT30 Pico Workflow

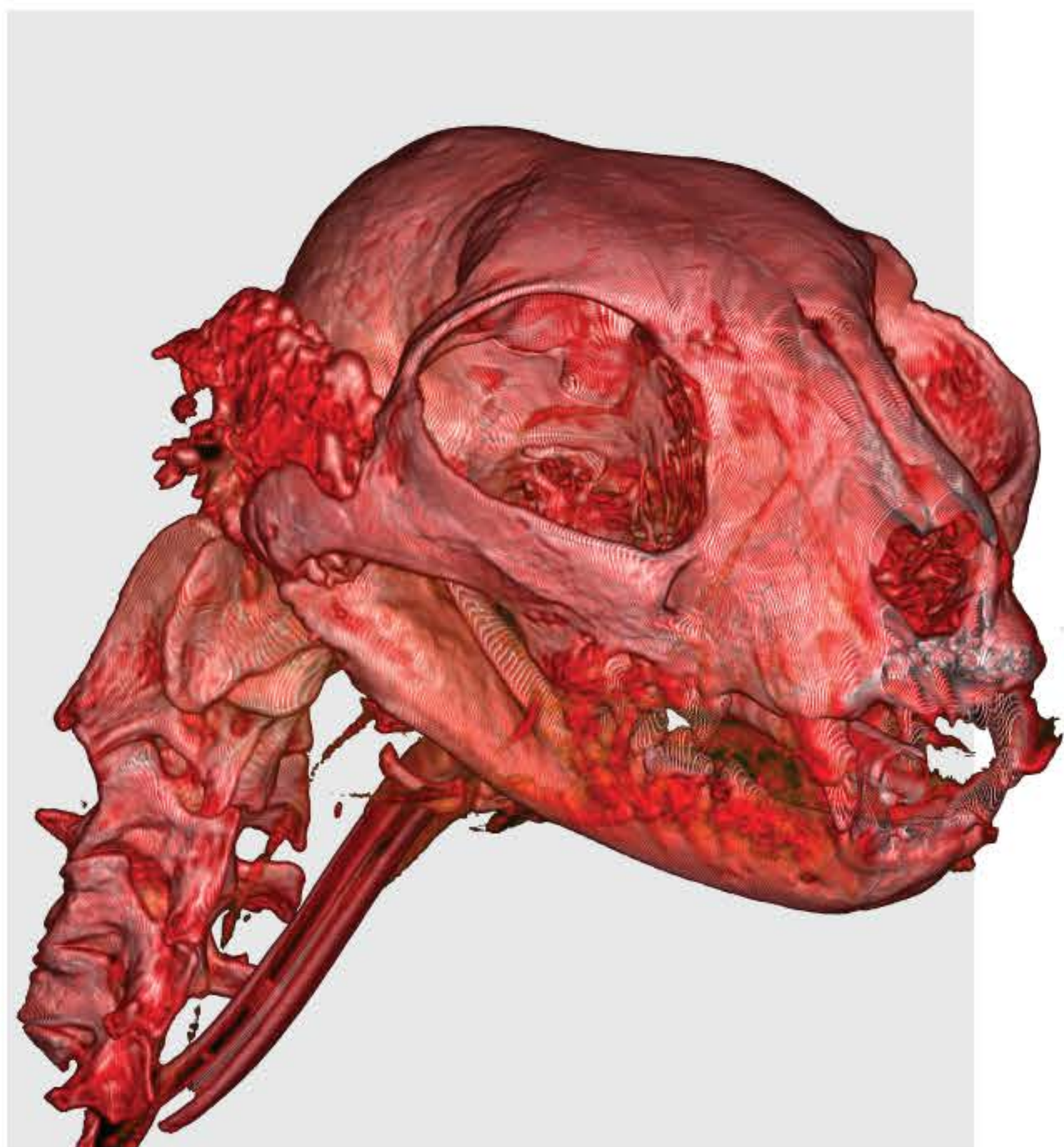
High Definition Volumetric Imaging allows you to view an array of conditions that radiographs, ultrasounds, conventional CT and even MRI can miss.

In many practices Epica™ HDVI has become the primary imaging modality because Vimago™ is safe, simple, accurate and fast. Our platform provides greater diagnostic confidence and greater efficiency.

Fluoroscopy

Vimago™ GT30 Pico Applications

- Swallowing Disorders such as Strictures
- Collapsing Trachea
- Motility Problems in Stomach and Intestines
- Flow of Blood through Abnormal Vessels
- Interventional Procedures



HDVI (High-Definition Volumetric Imaging)

is a new, proprietary and patented imaging technology, similar to CT (Computed Tomography) that provides unprecedented diagnostic and interventional information for clinicians. Epica HDVI is also capable of producing calibrated HU (Hounsfield Units) as used by radiologists to quantitatively measure density.

HDVI Technology produces incredibly detailed 3D images of your patient's anatomy with resolution as high as 0.09mm (about the thickness of a human hair). Clinicians can see the data in any angle, thickness or orientation resulting in superior diagnostic and interventional confidence.

HDVI the New Standard for Primary Imaging

Discover

How Vimago **GT30** Pico is a Complete Solution

Request a Vimago **GT30** Pico Demo

Three Modalities

One Robust Vimago™ GT30 Pico Platform

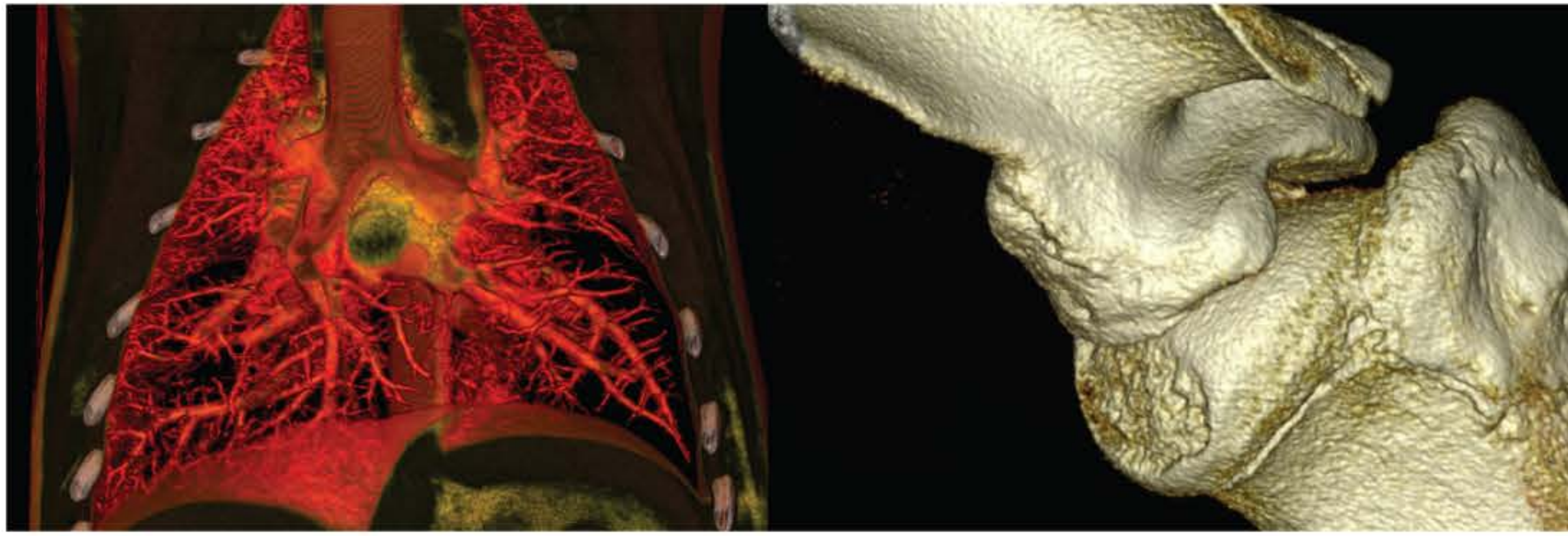
Vimago™ offers onboard Fluoroscopy, Digital Radiography and HDVI 3D Imaging plus a comprehensive set of the most advanced interventional imaging tools available. Users can seamlessly switch from one modality to the next, without losing settings or time.

The compact and mobile design has revolutionized imaging by offering some of the most advanced diagnostic and interventional capabilities available at an attractive total cost of ownership. Vimago™ is breaking down the traditional barriers to entry associated with advanced imaging system purchases.

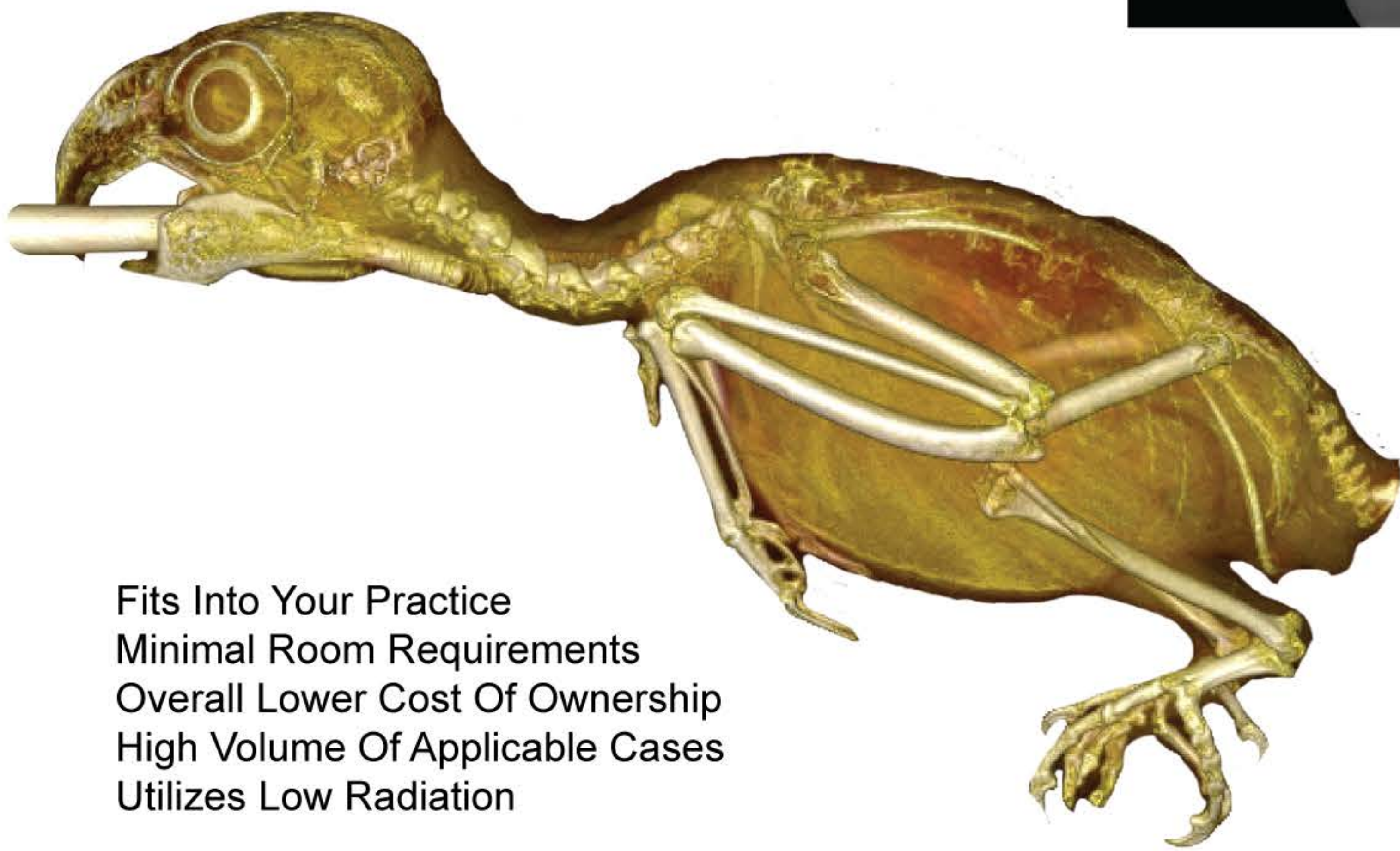
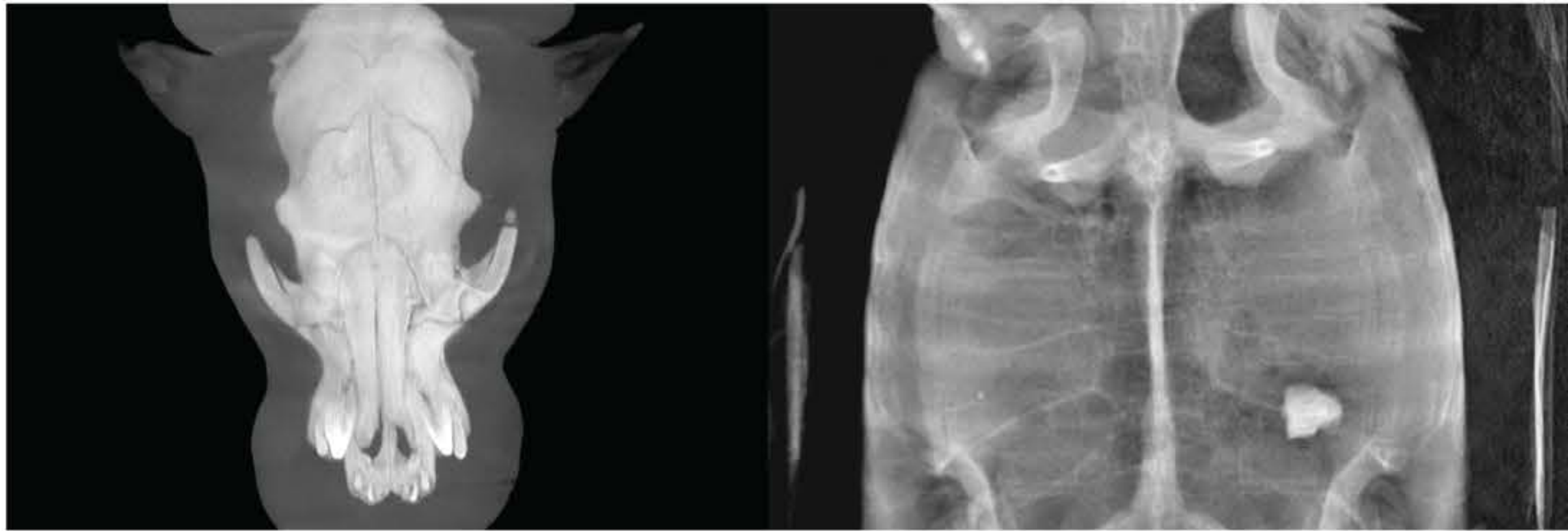
With Vimago™ you can provide a higher level of care to your patients, increase client retention, and expand your practice's abilities and revenue.



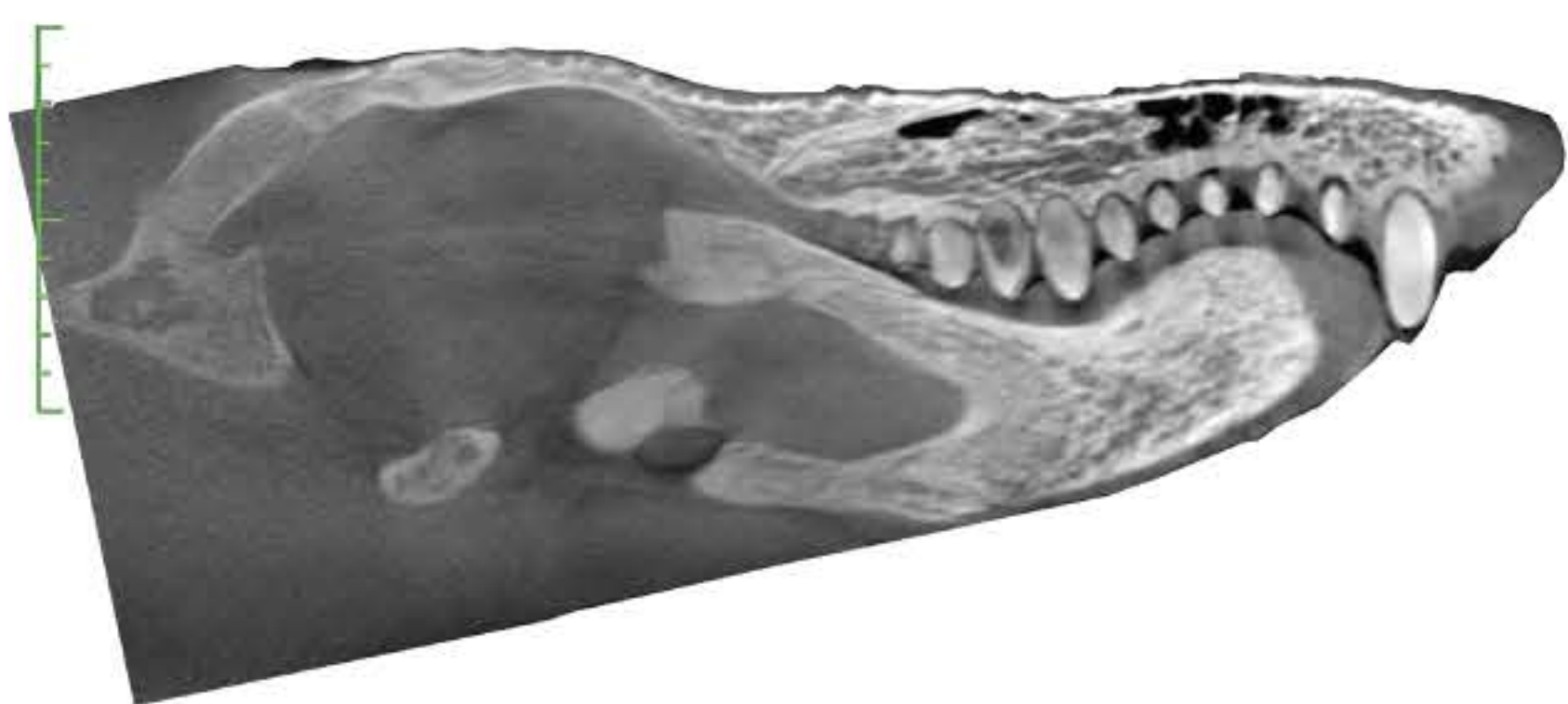
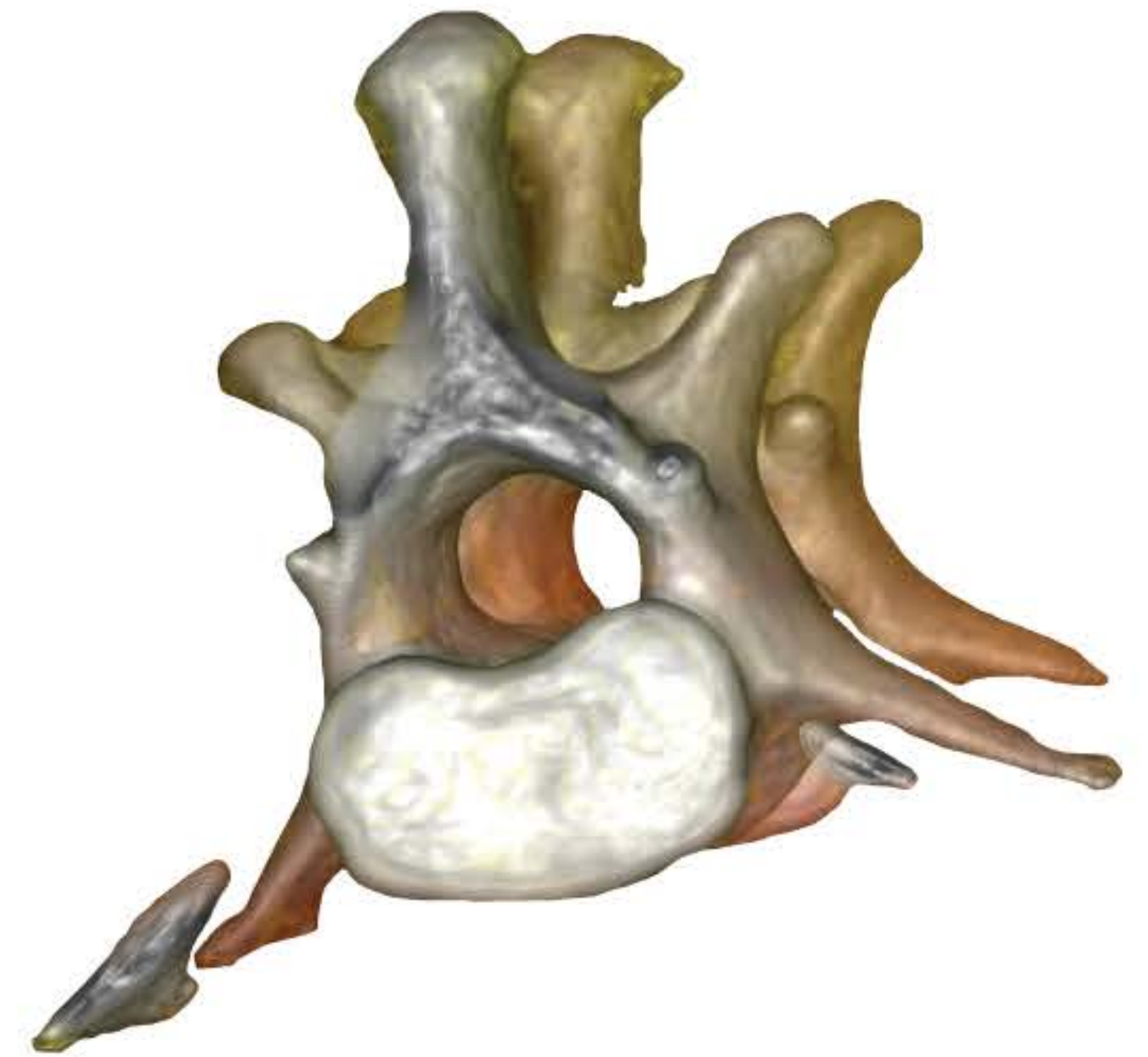
Skull
Spine
Thorax
Abdomen
Orthopedics



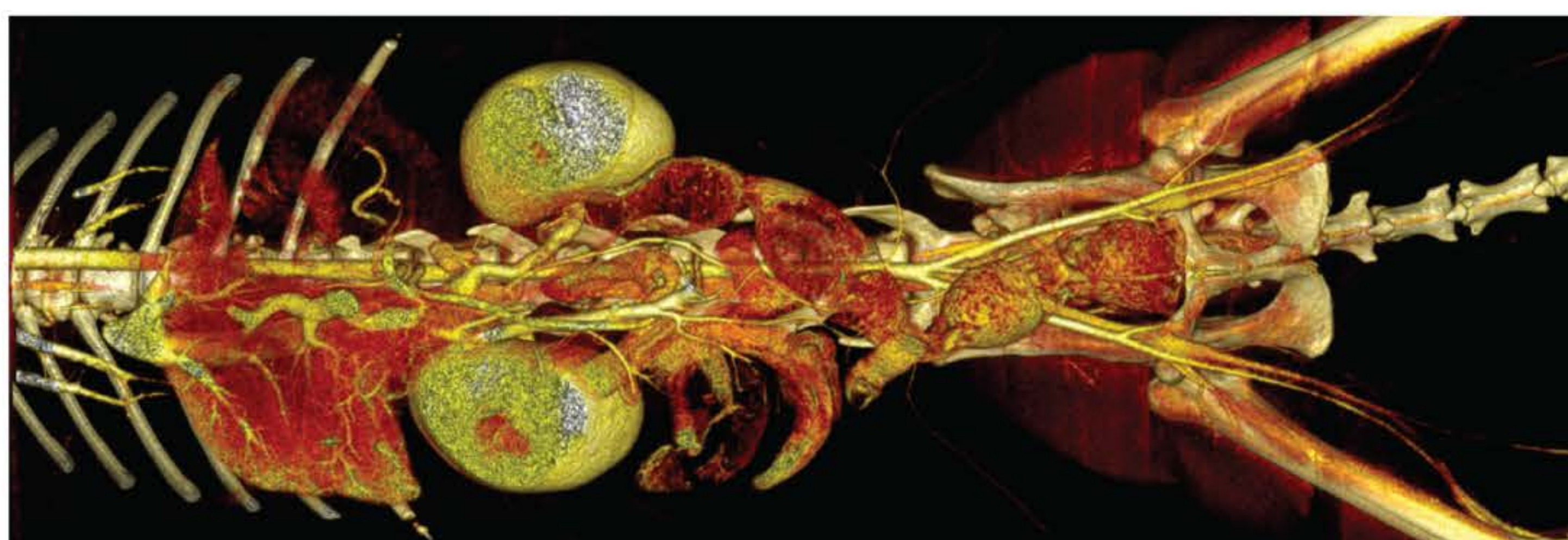
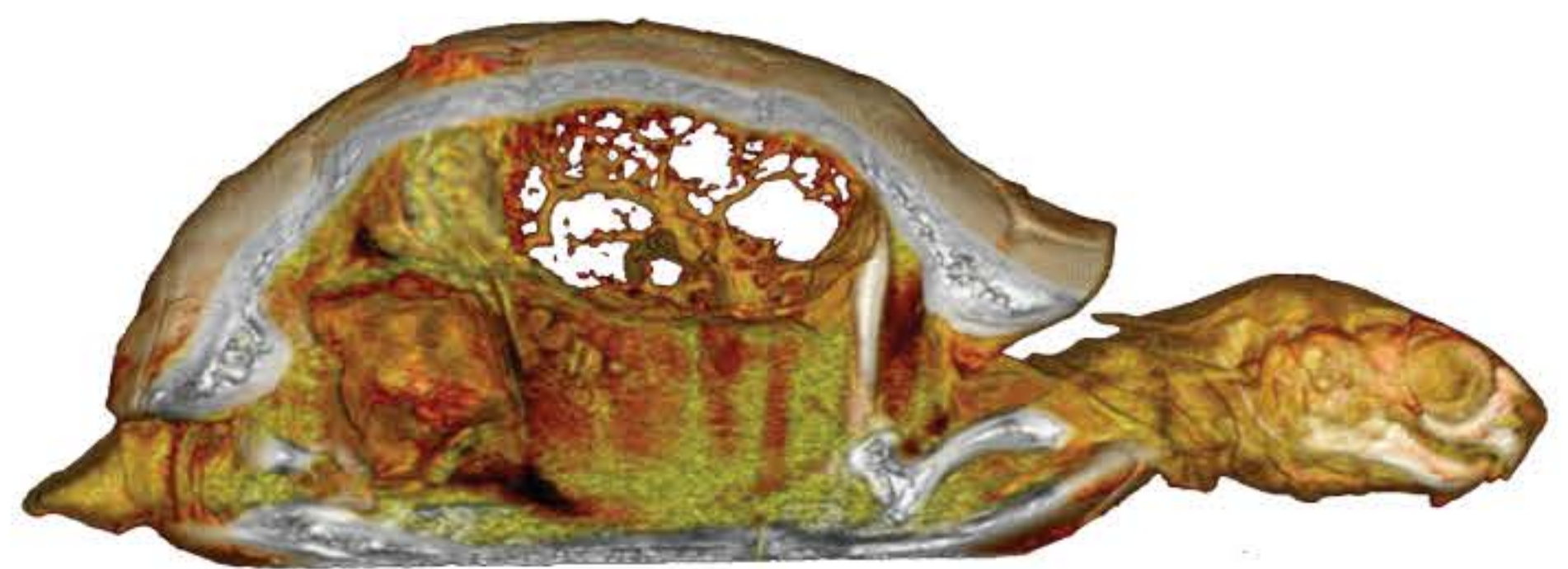
Primary Imaging	Oncology	Angiography	Dentistry
Interventional Radiology	Urology	Myelography	Airway
Foreign Bodies	Trauma	Arthrography	Aural



Fits Into Your Practice
Minimal Room Requirements
Overall Lower Cost Of Ownership
High Volume Of Applicable Cases
Utilizes Low Radiation



In addition to providing better diagnostic confidence, Vimago™ imaging platforms use considerably less radiation than standard CT, making it a safer option for practitioners and their animal patients. With Vimago™ you can practice better, safer medicine.



Market Leader in High Definition Volumetric Imaging

HDVI

VIMAGO™ GT30 Pico Versatility

- Diagnose abnormal blood vessels
- Diagnose/identify cancer (nearly anywhere in the body)
- Disorders of the abdomen such as uroliths and ectopic ureters
- Diagnose/identify disorders of bones and joints
- Obtain detailed dental images in a few minutes
- Guide biopsies and other minimally invasive procedures
- Utilize for surgical planning to improve outcomes

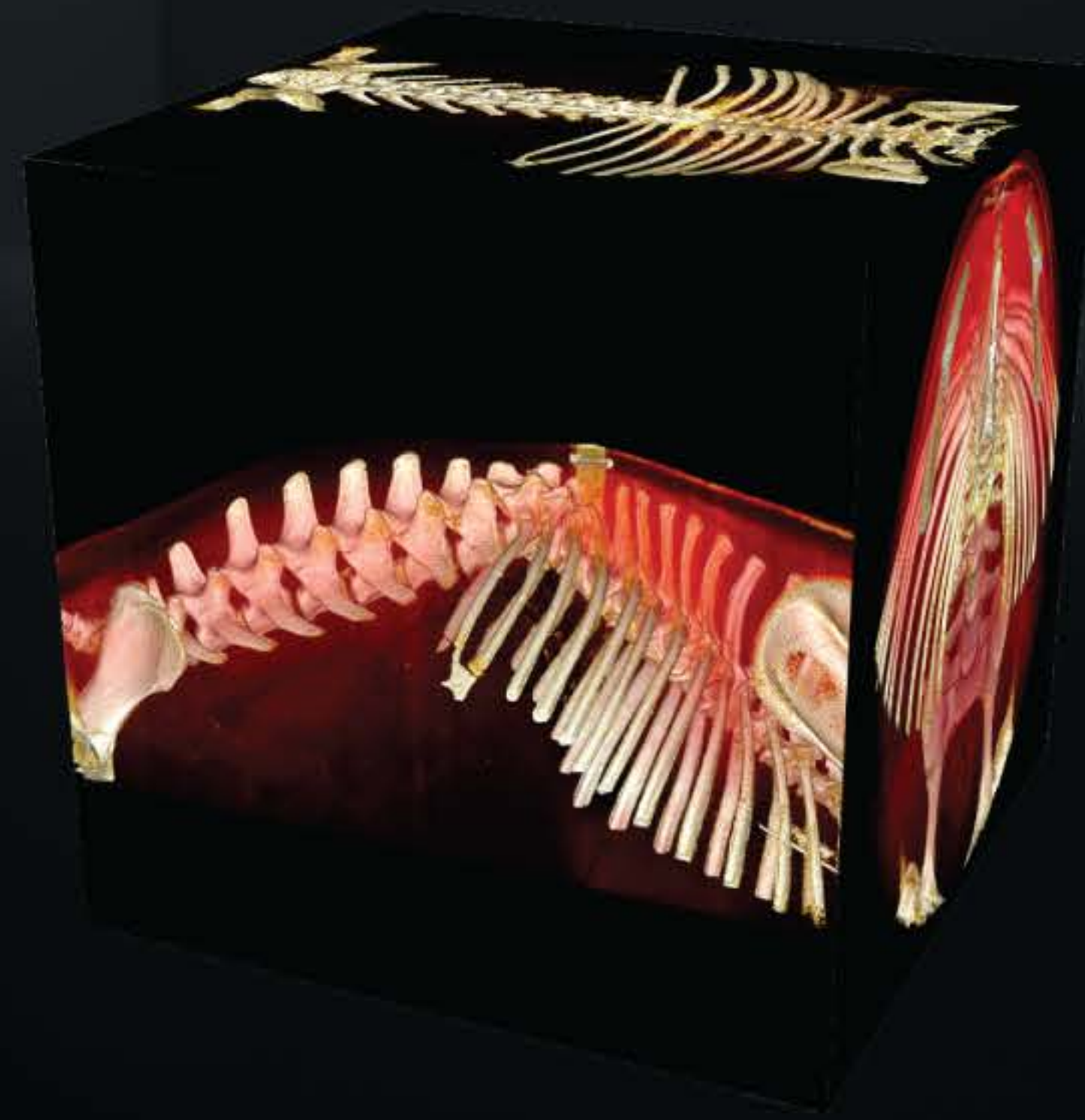
Phone 949.238.6323

Toll Free 855.993.7422

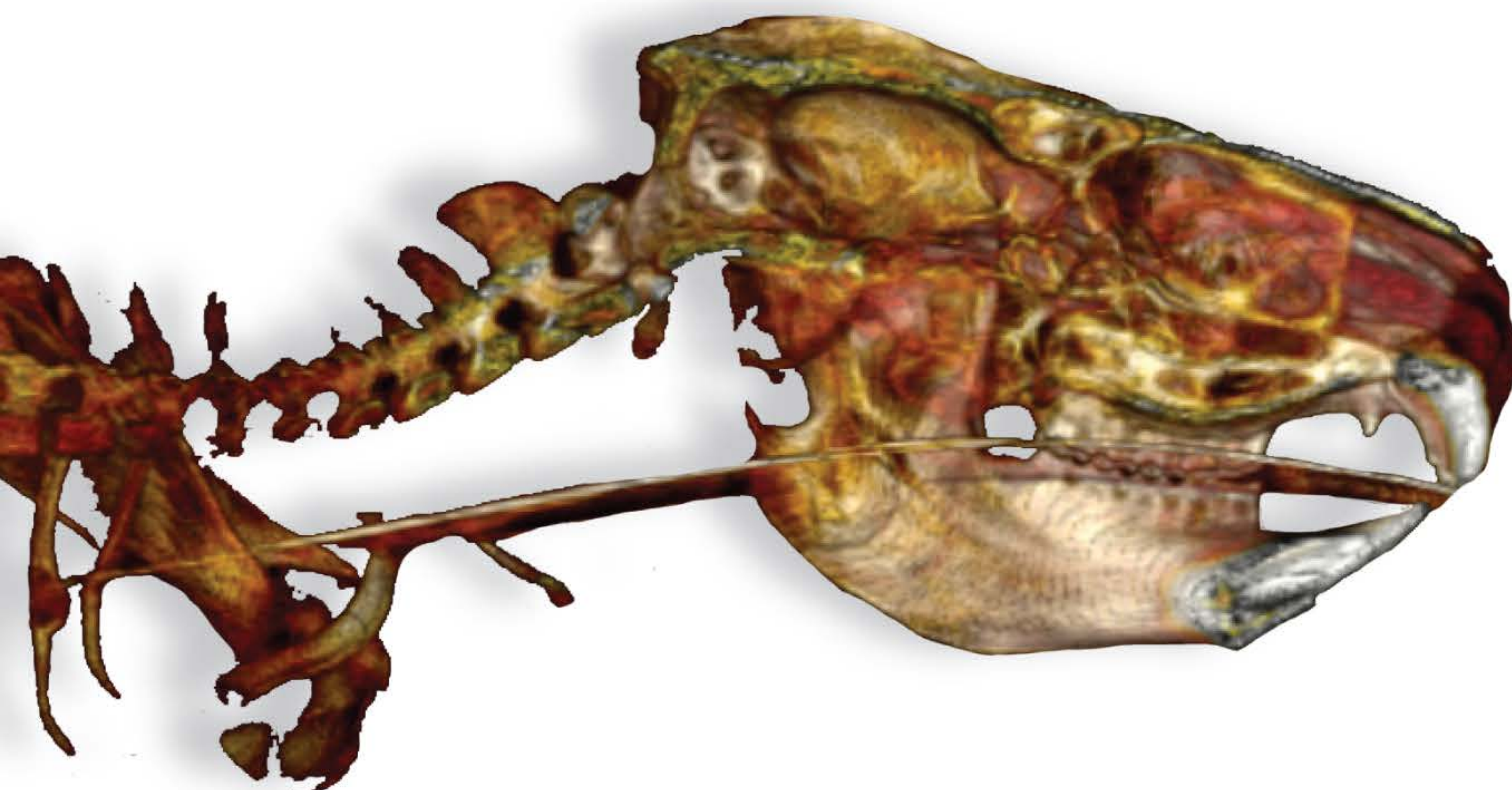
EpicaAnimalHealth.com

901 Calle Amanecer, Suite 150

San Clemente, CA 92673



3D images provide Veterinarians with a collaboration **and** communication tool that helps a pet owner to better understand their pet's condition and help them make faster, more informed treatment decisions.



EPICA
ANIMAL HEALTH

3D | Koala Skull