

Surgeon's Scrub Trough



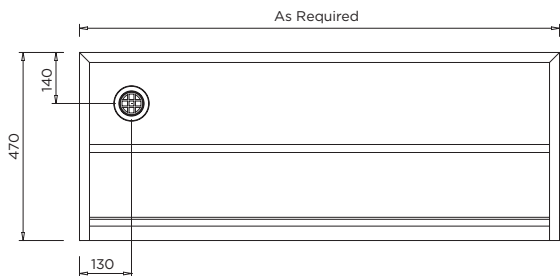
TST-WM
TST-FM

To order this item please advise:

- Wall Mounted (TST-WM) or Floor Mounted (TST-FM)
- Overall length
- Waste position: Left or Right
- Grade of stainless - 304 or 316
- Splashback orientation: rear only or return end(s)
- Tap quantity and code (if required)

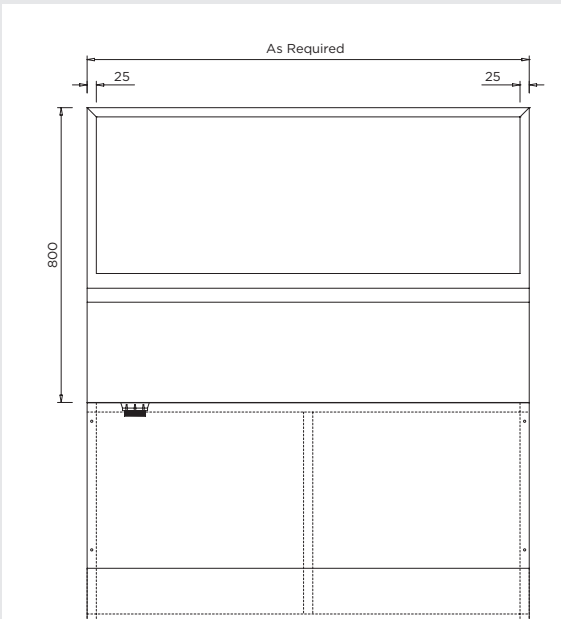
Product Info:

- Specifically suited to surgeon's scrub procedure
- Double-skinned robust construction
- Fully welded radius internal surfaces
- Manufactured to custom lengths
- Available with tapware (see Tapware: Section 11)

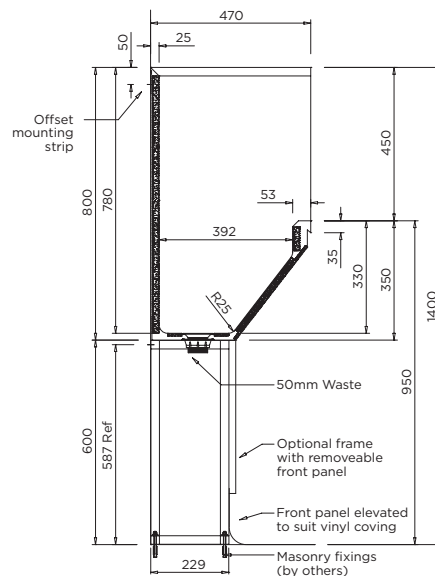


INSTALLATION NOTES

- 1) Fixture strength is ultimately determined by the load capacity of the supporting structure (noggin recommended for stud wall construction) and use of appropriate fixings (i.e. sleeve anchors for masonry walls).
- 2) Trough is mounted to rear wall via an offset bracket positioned at the rear of the splashback.
- 3) If trough is wall mounted model, it is vital this bracket be secured to a noggin or surface capable of supporting the majority of the fixture's operational weight.
- 4) Additional wall fixing points are provided in an integral flange below the trough.
- 5) An optional support frame for floor mounted models is supplied only by specific request.
- 6) Support from on floor mounted model includes removable access panel.



TST-FM



Note: Wall mounted model (TST-WM) supplied without support frame under trough

TST-FM