

Universal Washers & Pot Washers

RP, RG



Rhima Australia
www.rhima.com.au
Rhima New Zealand
www.rhima.co.nz
Rhima Singapore
www.rhima.sg





EASY AND INTUITIVE

The technology of these washers will lead you through the functions in an easy and intuitive way.

The soft-touch LCD panel with multicolour buttons clearly shows the working temperatures, the washing cycles and the functions in use.

Thanks to the self-diagnostic system it notifies the user of any anomalies. The innovative energy saving system reduces the boiler temperature when the appliance is waiting for the next washing-cycle. The large washing capacity and versatility of these high quality washers make these machines extremely competitive and suitable for a wide range of washing needs.





HR: OPTIONAL STEAM CONDENSER HEAT RECOVERY SYSTEM WILL SAVE YOU ENERGY

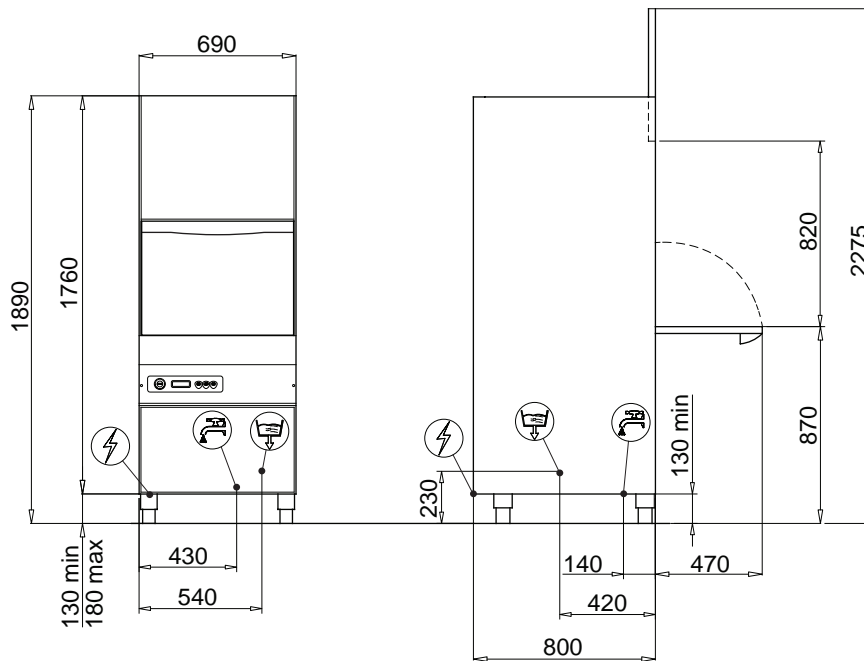
50% of energy costs can be saved using the optional HR (heat recovery) system. The water vapor is drawn directly out of the machine when the door is closed, and is used for pre-heating the cold water supplied to around 50°C. As a result, the energy required to reach the final rinse temperature (approx. 85°C) is dramatically reduced. Depending on the model chosen you can save between 3,5kW/h and 5,5kW/h.

HR technology improves the room's air quality and climate. The heat exchanger reduces the exhaust air temperature by more than half.

The entire humidity volume is cut down by approx 20% of equivalent machine without a heat recovery unit improving the operator comfort.

RP-1 POT & UTENSIL WASHER

The RP-1 is Rhima's most popular pot and utensil washer with a foot print of only 690x800mm. The machine is perfectly suited for most small to medium sized operations and 800mm baking trays.



BENEFITS

- Versatile wash programs 3-12 minutes
- Self-cleaning program
- Double skinned & insulated for efficient use of energy and low noise output making the washing environment more comfortable for users
- Energy saving heat recovery option



**WATER
SAVING**



**ECO
FRIENDLY**

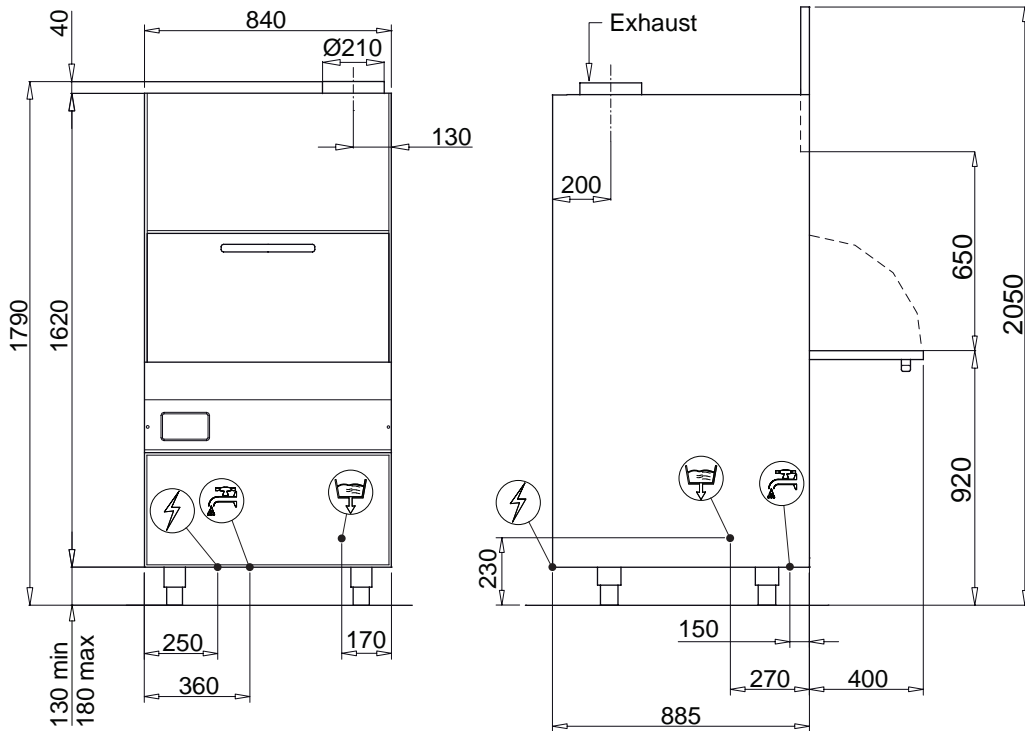


Power supply	415V 50 Hz
Total power	7.9kW
Total current	3 X 11 Amp
Wash tank capacity	50 ltrs
Water consumption (per cycle)	4.2 ltrs
Rinsing temp (approx)	85°C
Rack size	550mm x 665mm
Tallest washable item	805mm
Weight (empty)	155 kg
Drain hose diameter	Ø 32mm
Water connection (Hot*)	3/4" hose

*Connect to hot water for optimum performance

RP-2 POT & UTENSIL WASHER

The RP-2 Pot washer has 1.75kW of washing power and is suitable for heavy duty washing operations with a chamber height of 645mm.



BENEFITS

- Versatile wash programs 3-12 minutes
- Self-cleaning program
- Double skinned & insulated for efficient use of energy and low noise output making the washing environment more comfortable for users
- Energy saving heat recovery option



**WATER
SAVING**



**ECO
FRIENDLY**

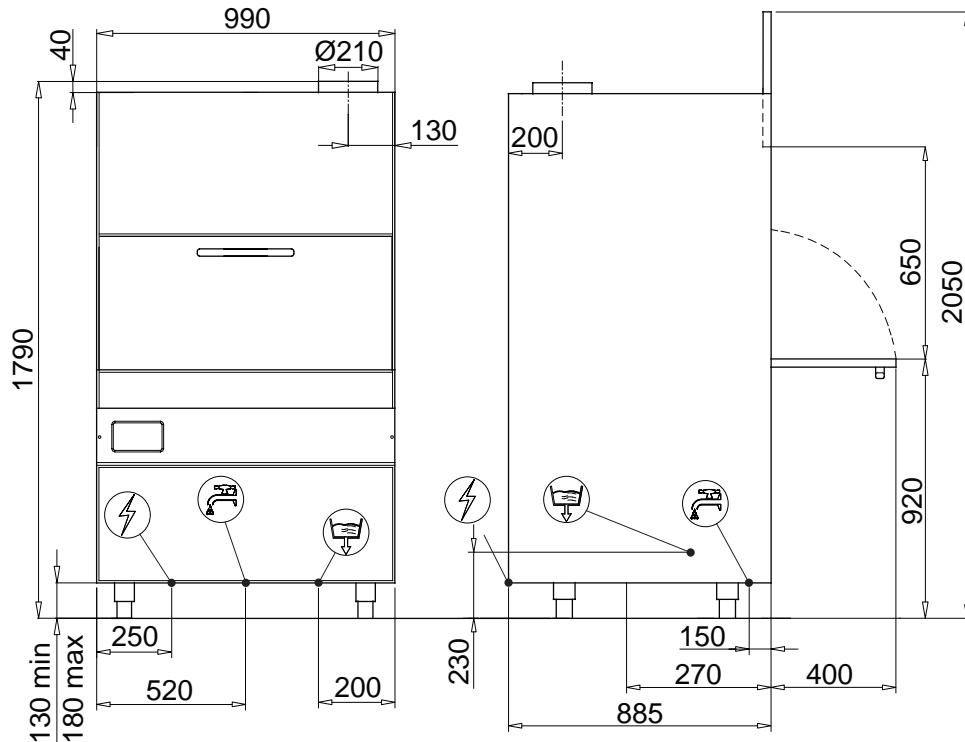


Power supply	415V 50 Hz
Total power	12.5kW
Total current	3 x 20 Amp
Wash tank capacity	78 ltrs
Water consumption (per cycle)	4.3 ltrs
Rinsing temp (approx)	85°C
Rack size	700mm x 700mm
Tallest washable item	645mm
Weight (empty)	199 kg
Drain hose diameter	Ø 32mm
Water connection (Hot*)	3/4" hose

*Connect to hot water for optimum performance

RP-3 POT & UTENSIL WASHER

The RP-3 is a heavy duty front loading universal pot and utensil washer with a rack size of 850mm x 725mm and a useful chamber height of 645mm.



BENEFITS

- Versatile wash programs 3-12 minutes
- Self-cleaning program
- Double skinned & insulated
- Energy saving heat recovery option
- Largest chamber available
- Independent pumps for left and right side of the chamber
- Stainless steel wash arms for both sides left and right



**WATER
SAVING**



**ECO
FRIENDLY**

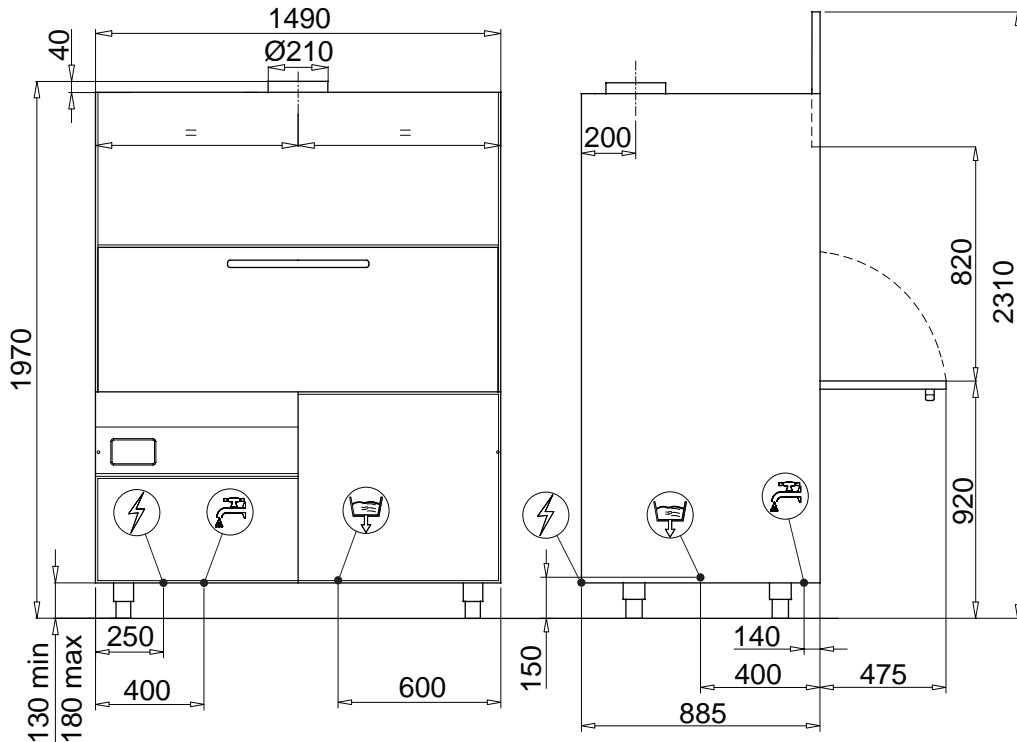


Power supply	415V 50 Hz
Total power	14.1kW
Total current	3 X 20 Amp
Wash tank capacity	78 ltrs
Water consumption (per cycle)	4.3 ltrs
Rinsing temp (approx)	85°C
Rack size	850mm x 725mm
Tallest washable item	645mm
Weight (empty)	221 kg
Drain hose diameter	Ø 32mm
Water connection (Hot*)	3/4" hose

*Connect to hot water for optimum performance

RP-4 POT & UTENSIL WASHER

The RP-4 is our most popular general purpose washer which is used for washing weigh heads, trays, crates, bins, pots, buckets, utensils and paint tins.



BENEFITS

- Versatile wash programs 3-12 minutes
- Self-cleaning program
- Double skinned & insulated
- Energy saving heat recovery option
- Largest chamber available
- Independent pumps for left and right side of the chamber
- Stainless steel wash arms for both sides left and right



**WATER
SAVING**



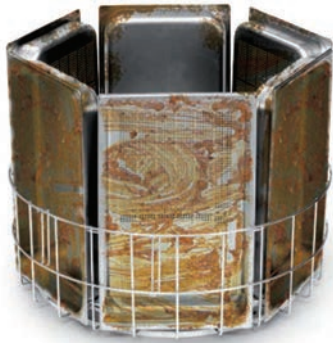
**ECO
FRIENDLY**



Power supply	415V 50 Hz
Total power	15.6kW
Total current	3 X 23 Amp
Wash tank capacity	120 ltrs
Water consumption (per cycle)	8.6 ltrs
Rinsing temp (approx)	85°C
Rack size	1350mm x 725mm
Tallest washable item	820mm
Weight (empty)	320 kg
Drain hose diameter	Ø 32mm
Water connection (Hot*)	3/4" hose

*Connect to hot water for optimum performance

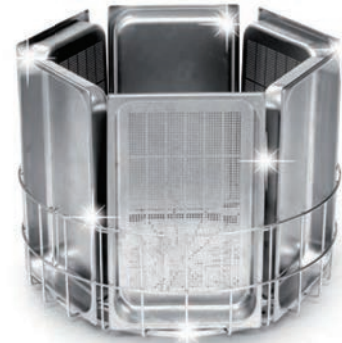
GRANULE WASHERS



⚙️ *rusted pots and pans are often a problem. They require soaking and manual cleaning which is a waste of time and resources.*



🪣 *The combined action of water, detergent and granules blasted at a high pressure ensures considerable time and energy savings, as well as chemical, water and electricity.*



✳️ *Excellent results against the most stubborn dirt. Moreover, the speedy cycles allow a quick re-use of the kitchenware. The staff that were previously employed to soak and hand wash, will now be free to perform other tasks.*

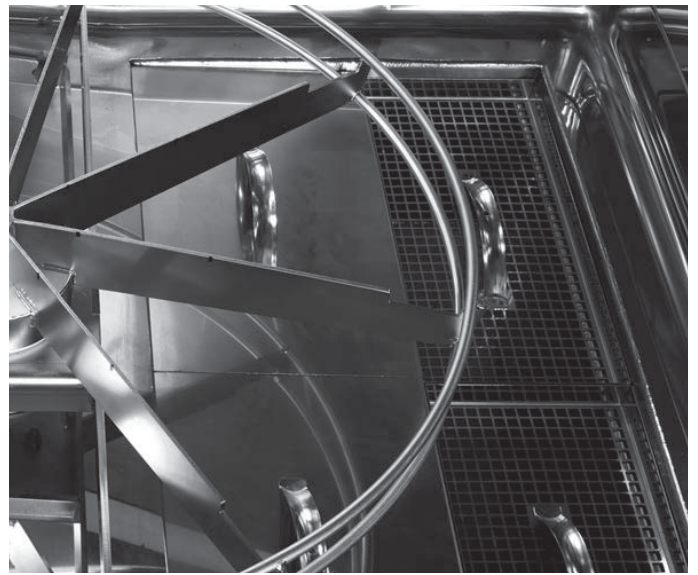
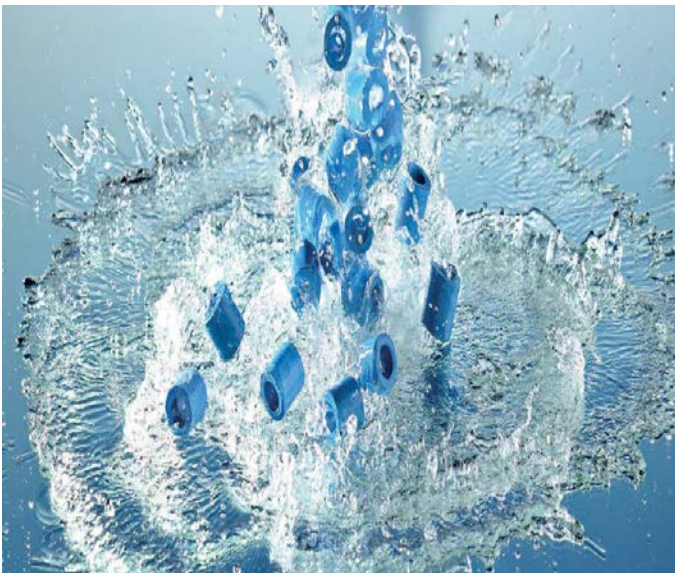
TECHNICAL SPECIFICATIONS

- 12 wash cycles, 6 of which combine water, detergent and granules
- Soft-touch panel with multicolour button
- Functional LCD Display for a constant control of all operations
- Double-wall body, fully insulated with high performance thermo-acoustic material
- AISI 316 body and impeller, high performance wash-pump
- Wash-tank in AISI 316 s/s with guaranteed homogeneous thickness throughout the tank
- Double, vertical easy-fit wash-arms, with concave shaped nozzles to prevent clogs and to optimise the combined flow of water and granules.
- Forced ventilation system to minimise the steam emissions at the end of the wash-cycle

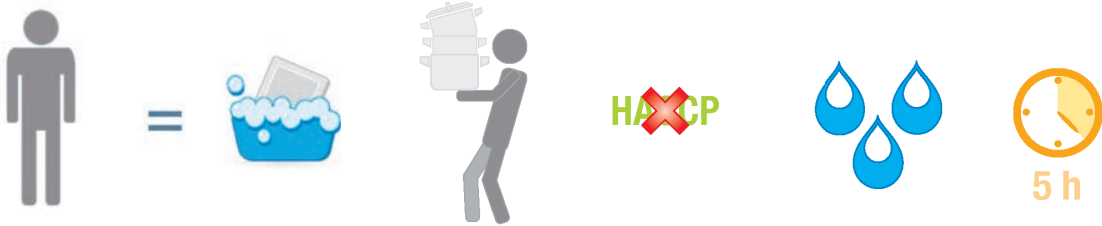


TECHNICAL SPECIFICATIONS

- The basket is placed on a rotating support stand, to optimise the mechanical action of the granules on the surfaces to wash
- The mix of the granules with the water is made before the entrance in the pump's body, minimising the mechanical friction between granules and the pump's components, for longer durability
- The optional service trolley facilitates the loading/unloading of the machine, increasing the operations speed and consequently, the machines productivity
- Heat recovery unit, standard on RG-10 and optional on the RG-9, to optimise energy resources and cut down on steam and wastage

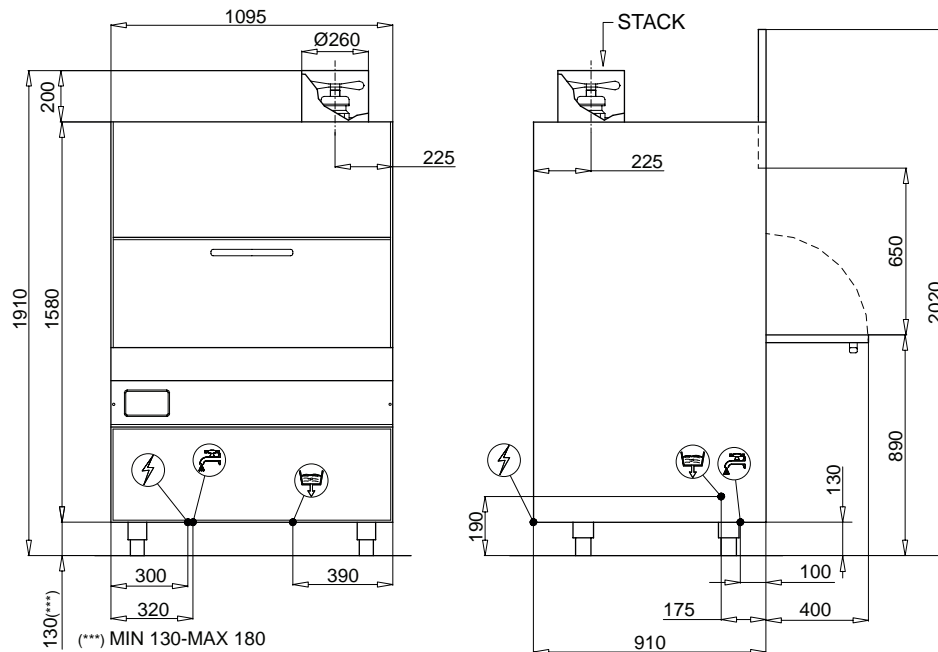


THINK ABOUT IT....



RG-9 GRANULE WASHER

The RG-9 Granule Washer utilises the combined action of water, detergent and granules blasted at high pressure. Washing with granules reduces the need for labour intensive pre-washing tasks such as soaking and scrubbing.



BENEFITS

- Combination of granules and detergent to remove carbon and grease build up
- Larger chamber to fit many trays
- Energy efficient thanks to its double wall
- Very well made, durable, built to withstand the hardest working conditions

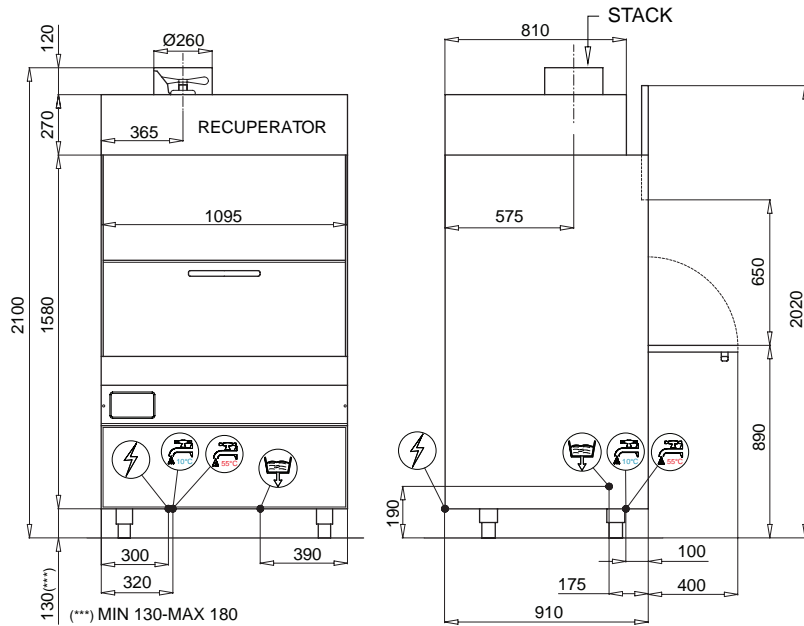


Power supply	415V 50 Hz
Total power	13.8kW
Total current	3 x 20.3 Amp
Wash tank capacity	103 ltrs
Water consumption (per cycle)	4.4 ltrs
Rinsing temp (approx)	85°C
Rack size	Ø 735mm
Tallest washable item	635mm
Weight (empty)	303 kg
Drain hose diameter (Hot*)	Ø 32mm Water connection 3/4" hose

*Connect to hot water for optimum performance

RG-9 HR GRANULE WASHER

The RG-9HR Granule Washer utilises the combined action of water, detergent and granules blasted at high pressure. The HR heat exchanging system uses the warm water vapor to pre-heat the incoming cold water, dramatically reducing the energy required to heat the final rinse water to 85°C.



BENEFITS

- Combination of granules and detergent to remove carbon and grease build up
- Larger chamber to fit many trays
- Energy efficient thanks to its double wall
- Very well made, durable, built to withstand the hardest working conditions
- Option to add a heat recovery unit



**WATER
SAVING**



**ECO
FRIENDLY**



Power supply	415V 50 Hz
Total power	13.8kW
Total current	3 x 20.3 Amp
Wash tank capacity	103 ltrs
Water consumption (per cycle)	4.4 ltrs
Rinsing temp (approx)	85°C
Rack size	Ø 735mm
Tallest washable item	635mm
Weight (empty)	320 kg
Drain hose diameter	Ø 32mm
Water connection (Hot*)	3/4" hose

*Connect to hot water for optimum performance

CLEANING AND CARE

CHEMICALS FOR USE WITH YOUR RHIMA EQUIPMENT

SUPERWASH 10 Litre

A hazardous liquid washing detergent specifically designed for washing soiled items across the hospitality and industrial industries. Only to be used in combination with an automatic dispenser. Comes in 1 x 10L container.



GRANULES BUCKET

Only required with the RG-9 and the RG-9 HR models, these granules are approved for contact with food and will gently polish pots, pans and trays while eliminating the need for pre-scrubbing and soaking.



RHIMA CARE

SERVICE AND MAINTENANCE FOR YOUR WASHER

Does my washer need regular service and maintenance?

Whether your Rhima washer is in or out of warranty, it needs regular professional maintenance to ensure it is operating at optimum performance.

Regular maintenance can also reduce running costs and greatly extend your washer's useful life. As importantly, a well serviced machine helps to safeguard against unexpected, inconvenient, expensive breakdowns.

Does my washer comply with HACCP guidelines?

Your Rhima washer is a commercial grade appliance that is designed to wash and sanitise your items to local council and health department guidelines. To ensure that your machine meets these requirements, it should be regularly tested by our experienced technicians who will ensure it complies with safety, hygiene and operational standards. A test report is provided for your records.



My washer needs to be fixed and it's 11AM on a Sunday morning. Who do I call?

Rhima provides professional washing equipment to professionals just like you. We understand that businesses do not all operate 9 to 5 and neither do we. Call us at anytime and a service representative will respond to your call. Our first priority is to try to get you operational over the phone, however if this is not possible, you will be given the option of waiting until the next business day to log a service call or if you can't wait, then in most cases a service technician will be arranged to attend your premises as soon as possible, usually same day.

BENEFITS OF RHIMA PREVENTATIVE MAINTENANCE

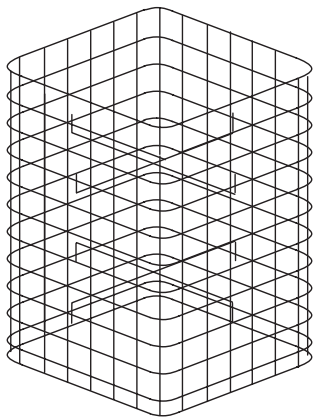
- Improved washer efficiency and reliability
- Priority service in the event of repairs being required
- Reduction in unexpected breakdowns and costly stoppages
- Savings on total maintenance costs
- Optimisation of detergent and rinse additive usage
- Prolonged service life
- 24/7 service response
- First 2 hours of labour on breakdowns*

*Callout fee applies. Not valid for faults not directly related to washer i.e. interruption to services (power, water & drainage) or operator

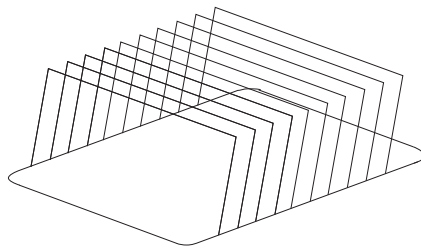
We can tailor a Rhima Care Preventative Maintenance Agreement to suit your needs including a HACCP test if required.

DISHRACKS

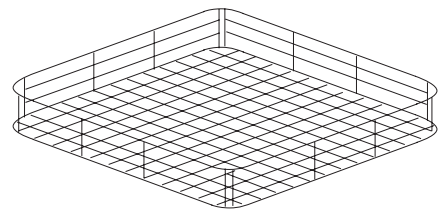
IDEAL FOR ALL DISHWASHING EQUIPMENT



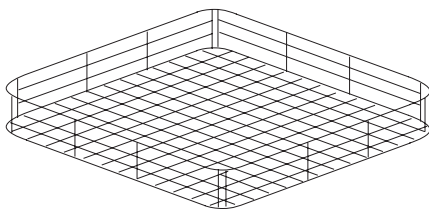
S/S UTENSIL HOLDER
PN: C86/A



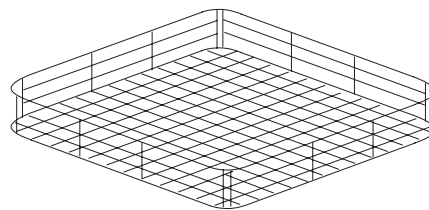
TRAY SUPPORT
PN: C97/A



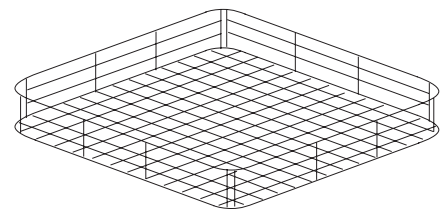
RACK FOR RP-1
PN: C87/B



RACK FOR RP-2
PN: 91100



RACK FOR RP-3
PN: 92100



RACK FOR RP-4
PN: 93600



Rhima Australia Pty Ltd
www.rhima.com.au
Tel: 1300 347 944

Rhima New Zealand
www.rhima.co.nz
Tel: +64 9414 5575

Rhima Singapore
www.rhima.sg
Tel: +65 9107 8943