

*Hello,*

S  im

Hello,

 Slim

**S**lim design for easier positioning

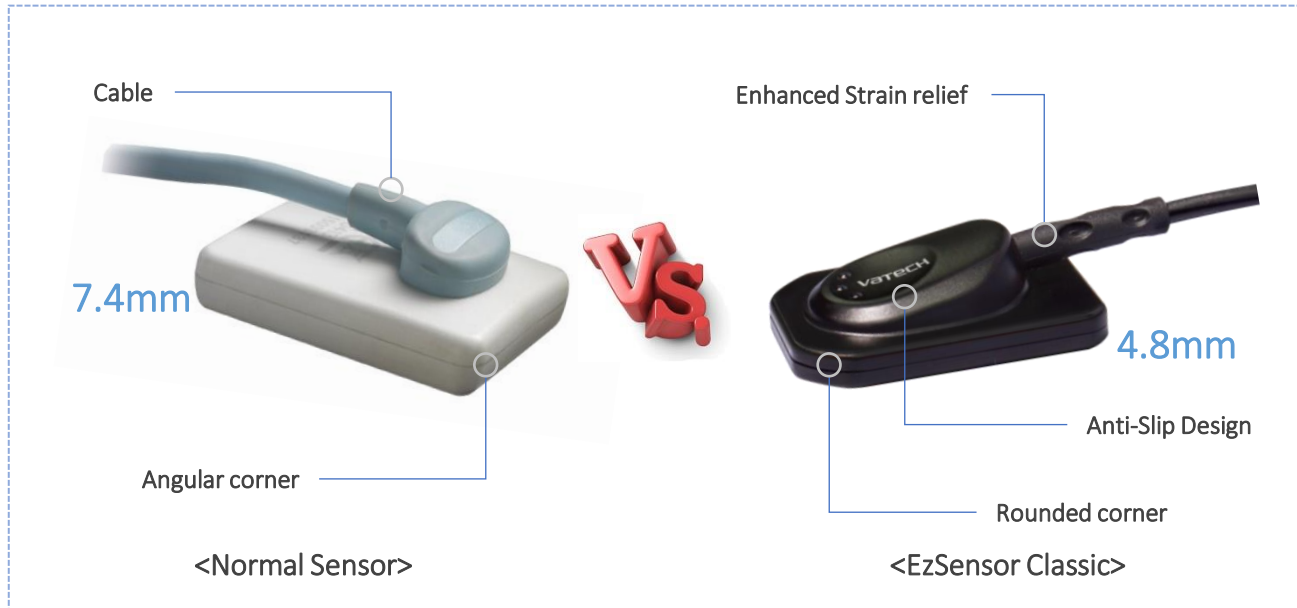
**L**eading expert in image quality

**I**nnovation in durability

**M**obility in practice

# Slim Design for Easier Positioning

The thin and rounded design allows for maximum comfortable placement against soft tissue



**S**lim and rounded edges ensure that patients feel as comfortable as possible while taking X-ray images.

## Slim Design for Easier Positioning

The thin and rounded design allows for maximum comfortable placement against soft tissue



“Patients will experience ‘optimized touch’ from the thinnest sensor. “

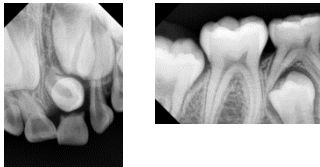
VATECH R&D Center found out the thickness that minimizes pain from the test, and lead the technology maintaining the thickness while using CMOS chip.

# Slim Design for Easier Positioning

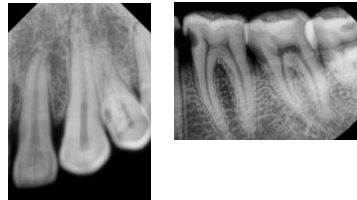
The thin and rounded design allows for maximum comfortable placement against soft tissue



Size 1.0 for children



Size 1.5 for children and adults



Size 2.0 for adults and big oral cavities



“Ergonomically designed in 3 different sizes” meet the needs of various cases.  
Even more, Vatech’s unique size 1.5 fits almost all patients.

# Leading expert in Image Quality

Experience high image quality

\*413uGy applied

\* Exposure Condition : 65kVp 6mA 28cm SID

\* Recommended Molar area dose: 400~600uGy (0.13sec)



## ① Skull Phantom Image Comparison (Maxillary Molar Area)

Compared to two other brands, EzSensor Classic image quality seems clearly evident.

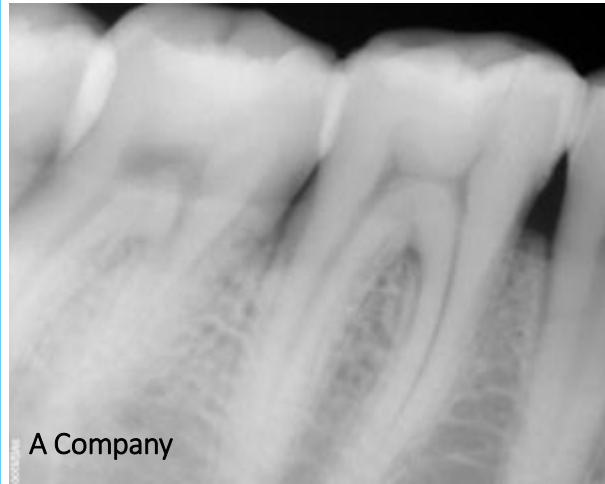
# Leading expert in Image Quality

Experience high image quality

\*413uGy applied

\* Exposure Condition : 65kVp 6mA 28cm SID

\* Recommended Molar area dose: 400~600uGy (0.13sec)



## ② Skull Phantom Image Comparison (Mandible Molar Area)

Compared to two other brands, EzSensor Classic image quality seems clearly evident.

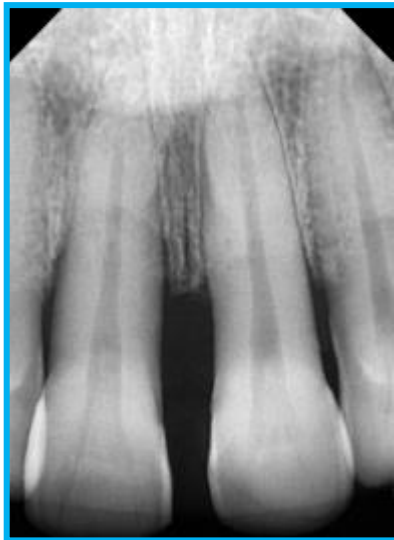
# Leading expert in Image Quality

Experience high image quality

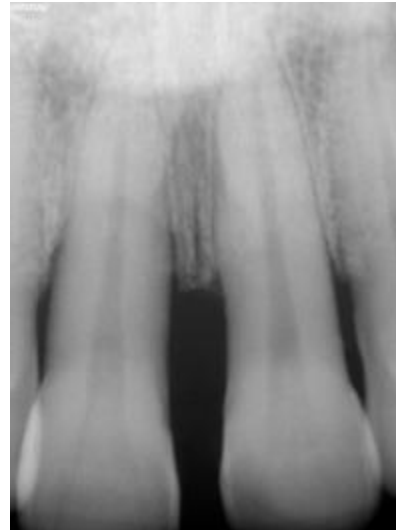
\*318uGy applied

\* Exposure Condition : 65kVp 6mA 28cm SID

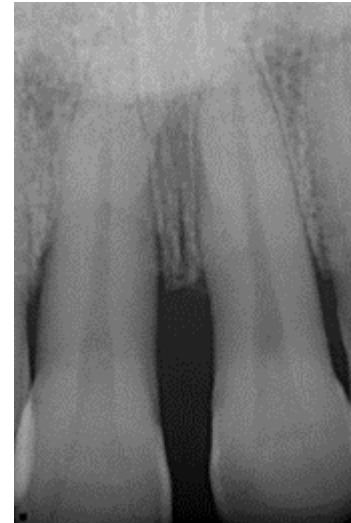
\* Recommended Incisor area dose: 400~600uGy (0.13sec)



EzSensor Classic



A Company



B Company

### ③ Skull Phantom Image Comparison (Maxillary Incisor Area)

Compared to two other brands, EzSensor Classic image quality seems clearly evident.



# Leading expert in Image Quality

Experience high image quality

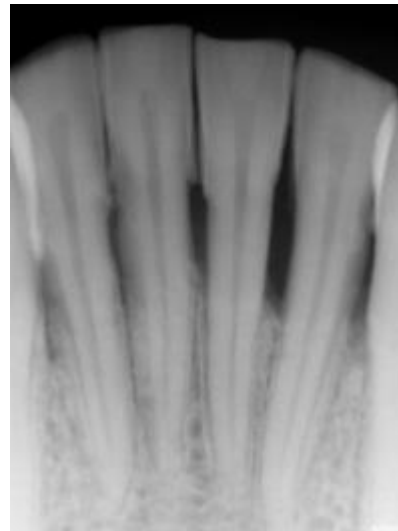
\*318uGy applied

\* Exposure Condition : 65kVp 6mA 28cm SID

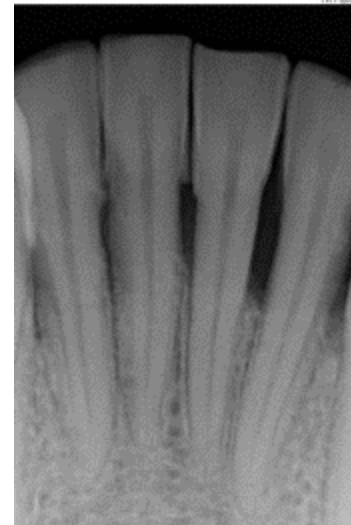
\* Recommended Incisor area dose: 400~600uGy (0.13sec)



EzSensor Classic



A Company



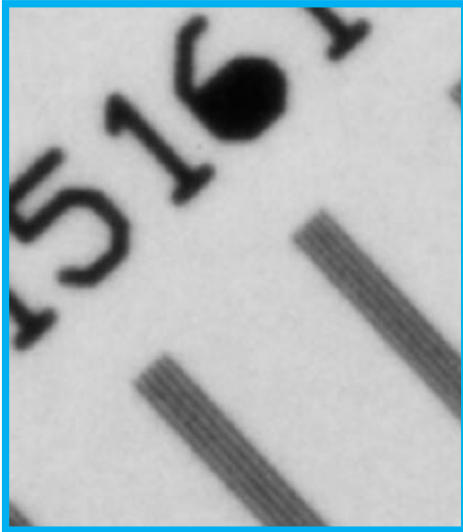
B Company

## ④ Skull Phantom Image Comparison (Mandible Incisor Area)

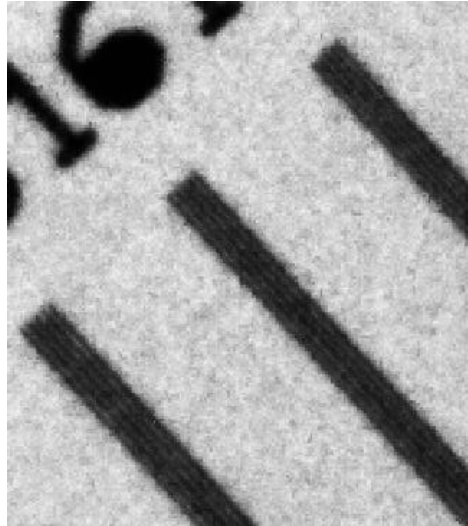
Compared to two other brands, EzSensor Classic image quality seems clearly evident.

# Leading expert in Image Quality

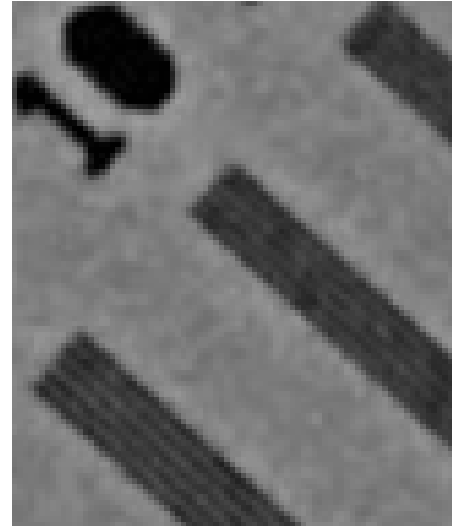
Experience high image quality



EzSensor Classic



A Company




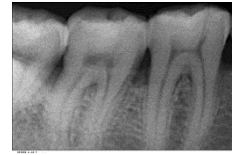
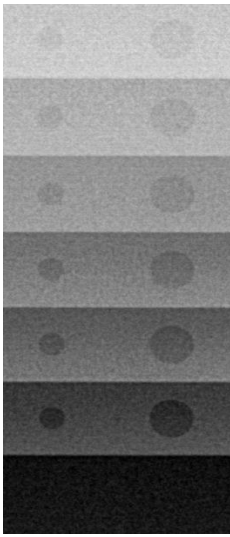

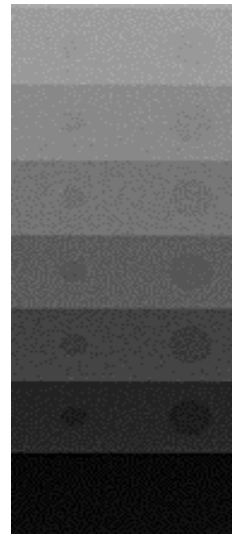
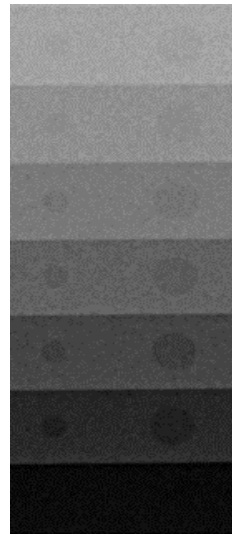


B Company

Line Pair Resolution Comparison

# Leading expert in Image Quality

Experience high image quality

<p><b>Skull Phantom Image</b></p>				
<p><b>Step Wedge* Image</b></p> <p>Test conditions: 100uGy</p>				
<p><b>Sensor Brand</b></p>	<p><b>EzSensor Classic</b></p>	<p><b>A</b></p>	<p><b>B</b></p>	<p><b>C</b></p>

- **Step wedges** are used for calibration and evaluation of radiology machines.
- The images were acquired using the same exposure conditions [time, kVp, mA]

# Leading expert in Image Quality

Experience high image quality

You will experience the **stability** at all times!



EzSensor Classic provides you stable quality through high sensitivity sensor technology.

Under a wide range of exposure settings even including old X-ray sources, you can capture diagnosable and consistent images.

# Innovation in Durability

Upgrade Usability and Raise Value

EzSensor Classic is rated at IP68, the highest level of the Ingress Protection [IP], which proves that it has complete protection against dust and pressure caused by long periods of immersion.

<b>IP</b>	<b>6</b>	<b>8</b>
<b>Ingress Protection</b>	<b>First Digit : Solids Protection</b>	<b>Second Digit : Liquids Protection</b>

“6”: Dust Tight / “8”: Immersion beyond 1m



EzSensor Classic is designed with a durable body to prevent any kind of damages in its everyday use.

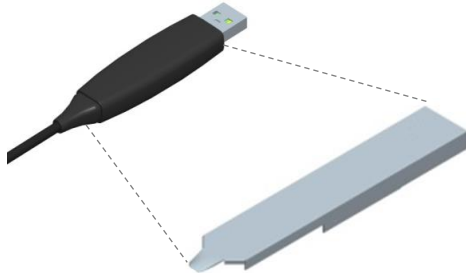
# EzSensor Classic

Directly connect the EzSensor Classic USB to the USB port on the PC.



## USB Cable Length

Length of cable between sensor and PC is 2.7m



## Metal Cover

Metal inner case protects the USB.

(Shock protection up to 9N)

## General Technical Specifications

Installation	Wall or Lamp (Pipe) mounted
Grey Scale	4096 gray levels
PC Connection	USB 2.0 Compatible *In the case of further extension, the use of an active USB hub is recommended.
PC Requirement	<ul style="list-style-type: none"> <li>▪ CPU: Intel Pentium IV 3.0 GHz</li> <li>▪ Main Memory: 1GB of RAM (DDR2)</li> <li>▪ Graphic Card : 64MB or Higher</li> <li>▪ HDD: 80 GB (or higher)</li> <li>▪ Display: 1024x768 (Min)</li> </ul>

	Sensor Size 2.0	Sensor Size 1.5	Sensor Size 1.0
Sensor Dimensions (L x W x D mm)	42.9 x 31.3 x 4.8 mm 1.69 x 1.23 x 0.19 inch	39.5 x 29.2 x 4.8 mm 1.55 x 1.15 x 0.19 inch	36.8 x 25.4 x 4.8 mm 1.44 x 1.00 x 0.19 inch
Active Sensor Area (L x W mm)	35.99 x 25.99 mm	33.00 x 23.98 mm	30.01 x 20.01 mm
Pixel size (µm/mm)	29.6 µm / 0.0296 mm		
Theoretical resolution (LP/mm)	16.89 (LP/mm) *Actual(or ideal) resolution may not reflect same numbers as mentioned depending on circumstances)		
Cable length (M)	2.7 M		

# EzSensor Classic

## Accessories

EzSensor Classic meets the needs of every requirement.

In Box (Full Pack)	Remark
Sensor Module	CMOS Sensor
Wrap (Hygienic Sleeves)	Conform to the ISO 10993-1
Holder for Sensor	1 pc
Driver Installation CD	Device Driver





# We have redefined the intraoral sensor



Thank you