

METAL
DETECTOR

MD-5500



LCD
SEGMENT
DISPLAY

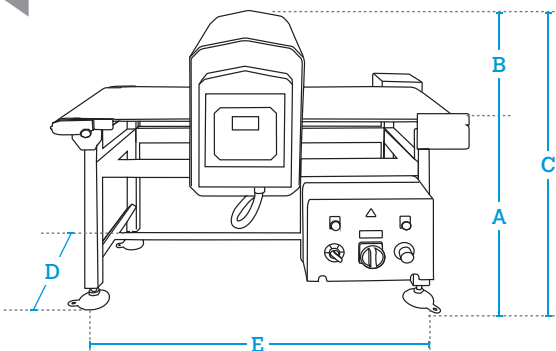


RS-232



500 PLUs
IN MEMORY

DIMENSIONS



DATA IN mm

| | |
|----------|-----------------------------|
| A | 850-950 (adjustable height) |
| B | 290 |
| C | 1,140-1,240 |
| D | 550 |
| E | 1,120 |

Measurements for model
MD-5500S 1300/300/400/200.
For other sizes, contact us.

Outstanding functions

- Mono-frequency.
- Variable conveyor belt speed.
- "Auto-setup" with interference suppression and automatic calibration of sensitivity.
- Digital multi-filter: to guarantee maximum stability in harsh environments.
- Auto-balance: automatic detection and compensation of any signal changes (example: variations in temperature).
- Precise detection area: exact location of the metal particle in the detection field for easy separation.
- Auto-monitoring: to control the proper performance of the equipment.
- Safety: access protected by three password levels.

Construction

- Structure:
 - Painted aluminium tunnel, with IP66 protection.
 - Anodized aluminium frame (optional in AISI 304 stainless steel).
 - AISI 304 stainless steel electrical box, with IP69 protection.
 - Transport conveyor driven by gear-motor with IP55 protection (IP66, optional).
- Belts:
 - Characteristics: smooth rigid or modular.
- Console:
 - 4-keys touchpad and backlit LCD display.

Communications to PC

- RS-232.

Power supply

- Electrical: 100 - 240 V AC, 50/60 Hz.

Possible integration with other equipment

- Dibal LS-4500 and CLS-4500 automatic weigh-price labellers.
- Dibal CW-4500 checkweighers.
- Dibal GW-4500 graders.

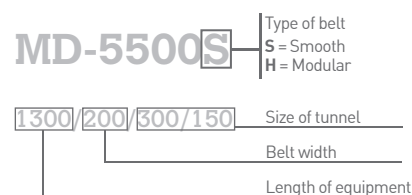
MODELS

MD-5500S

1300/200/300/150

- W200 mm smooth belt.
- Maximum product dimensions:
 - Dry product: W200 x H75 mm.
 - Moist product: W200 x H50 mm.
- Maximum weight on belt: 15 kg.

NAMES OF THE MODELS (EXAMPLE):



MD-5500S

1300/300/400/200

- W300 mm smooth belt.
- Maximum product dimensions:
 - Dry product: W300 x H125 mm.
 - Moist product: W300 x H100 mm.
- Maximum weight on belt: 15 kg.

MD-5500S

1800/400/500/300

- W400 mm smooth belt.
- Maximum product dimensions:
 - Dry product: W400 x H225 mm.
 - Moist product: W400 x H200 mm.
- Maximum weight on belt: 15 kg.

MD-5500H

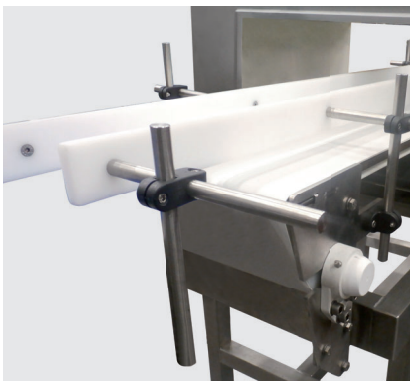
2000/400/500/350

- W382 mm modular belt.
- Maximum product dimensions:
 - Dry product: W400 x H275 mm.
 - Moist product: W400 x H250 mm.
- Maximum weight on belt: 50 kg.

Options

| Option | Characteristics | Ref. |
|---------------------------------|--|------------|
| Modular belt | | Contact us |
| Other tunnel dimensions | Consult dimensions of the equipment, product and type of belt available. | Contact us |
| Stainless steel frame | For MD-5500S 1300/200/300/150. | Contact us |
| Stainless steel frame | For MD-5500S 1300/300/400/200. | Contact us |
| Stainless steel frame | For MD-5500S 1800/400/500/300. | Contact us |
| Stainless steel frame | For MD-5500H 2000/400/500/350. | Contact us |
| IP66K gear motor | | Contact us |
| Equipment setup | | Contact us |
| Right to left working direction | Standard working direction: from left to right. | Contact us |
| Standard packaging | | Contact us |
| Cage packaging | Necessary depending on the destination. | Contact us |

Accessories



Ref: Contact us

Guides



Ref: Contact us

4 wheels with brakes

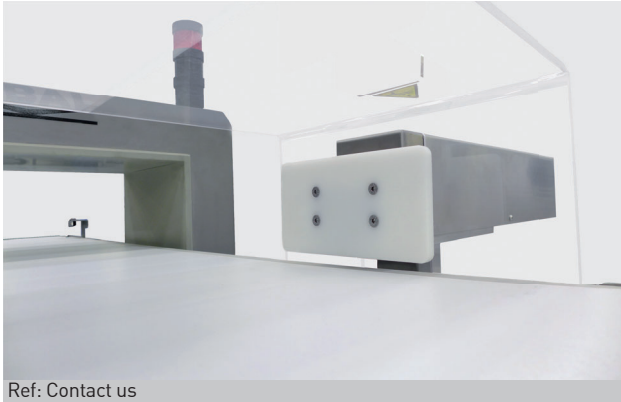
Stud included.



Ref: Contact us

Visual and audible alarm (24V)

Without IP protection.



Ref: Contact us

Rejection system

Pneumatic piston, accompanying blade, push blade, air blowing...



Ref: Contact us

Bucket for contaminated products



Ref: Contact us

Motorised conveyor

Infeed/output L1,000 x W280 mm conveyor, with smooth belt.



Ref: Contact us

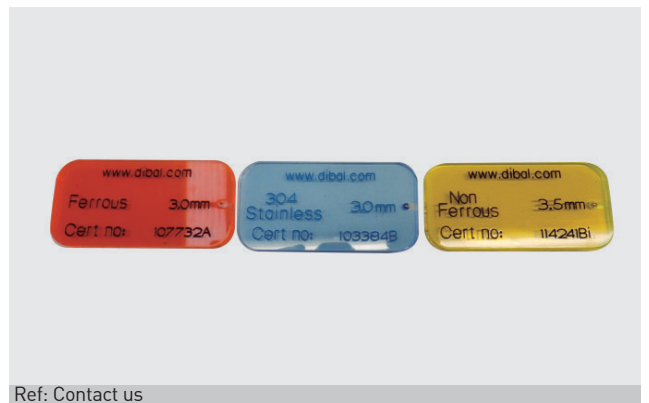
Rollers conveyor

Rollers conveyor for transporting or accumulating products.



Ref: 49MD0KITEST

Test card kit



Ref: Contact us

Certified test card kit