

RIDING LAWN TRACTORS

X500 SERIES • X300 SERIES • S240 • 100 SERIES



JOHN DEERE



RIDING LAWN TRACTORS

GREAT LAWN CARE STARTS HERE.



Four-wheel steering. Designed for ultimate trimmability. All four wheels steer the tractor instead of just the front two. Standard on some Select Series models.

TABLE OF CONTENTS

X500 Series Garden Tractors	4
X300 Series Lawn Tractors	6
S240 Series Lawn Tractors	8
100 Series Lawn Tractors	10
Specifications	12
Attachments	15



Great lawn care has gone high tech. The John Deere MowerPlus™ app helps keep your John Deere riding lawn equipment running well and your lawn looking great. Track and record yard tasks and access seasonal care tips. #MustHaveMowerPlus. Available at the App Store® or Google Play™*** store. US only.

Keeping a lawn healthy with a quality cut is job one. Doing the job in comfort and with ease is just plain sensible. That's why we developed the latest MulchControl™ Kit with One Touch Technology.

Available on all our Select Series Lawn Tractors, you can now mulch with the push of a button right from your seat. Read all about it on page 3 or 5.

On page 8 learn about the S240 Lawn Tractor. This lawn tractor now features a model with a 48-in. (122-cm) Accel Deep™ Mower Deck to help you mow better, faster and is available with a MulchControl™ Kit so you can mulch ON and feed your lawn with the flip of a lever.

Then there are our 100 Series Lawn Tractors on page 10. These lawn tractors are comfortable, affordable and easy to use. And ground breaking. We've changed the oil change with the John Deere Easy Change™ 30-Second Oil Change System on select models and implemented an ergonomic design across the lineup with a wide, welcoming operator station. Read all about it.

Talk to your local John Deere Dealer today. Or visit JohnDeere.com/LawnTractors or JohnDeere.CA/LawnTractors today.



A heavy-duty robotically welded frame. The bedrock of these machines. So solid, it can handle an amazing variety of heavy-duty attachments. (X500 frame pictured)

The Accel Deep™ mower deck. Dozens of prototypes discarded. Hundreds of hours of simulations and real world testing. This is how to mow well fast.



MulchControl™ Kit with One Touch Technology. Mulch on. Mulch off. Mulch the easy way—with the push of a button. Available with Accel Deep™ Mower Decks on Select Series Tractors.



Cutting Height Adjuster. Cutting height can be adjusted in ¼-in. (0.64-cm) increments for a precise, even cut. (Shown here on the X300 Series.)



Twin Touch System. Twin Touch™ automatic transmission lets you easily change from forward to reverse with two-pedal foot control for effortless speed and direction changes. (Available on Select Series Tractors.)

X500 SERIES

THE TOP OF THE LINE. ALL YOURS.



BUMPER-TO-BUMPER
4-YEAR/500-HOUR
WARRANTY

THE QUALITY OF CUT IS JUST THE BEGINNING.

Mow with precision. Negotiate an incline. Till a garden. And mulch your lawn.

X500s mow where you need to go, and do heavy-duty work, too. Their wide stance enhances stability on hillsides. Traction can be increased simply by pressing the foot-operated traction control. Heavy-duty frames work with ground-engaging equipment like tillers and blades. And features like the on-board deck-leveling gauge assure a quality cut every time. And the optional MulchControl™ Kit makes feeding your lawn easy.

Multi-Terrain.

Multi-talented: The X500 Series.



Rotary Tiller. Create a great start for your flower bed or garden.

MulchControl™ Kit with One Touch Technology. Mulch on. Mulch off. Mulch the easy way — with the push of a button. Available with Accel Deep™ Mower Decks on Select Series Tractors.

The X590 with Constant-speed Governor technology.
The innovative way to cut mowing time — and grass — down to size.

iTorque™ Power System.
All X500 Series Tractors feature iTorque Power System engines that provide plenty of power and torque for excellent performance in any operating condition.

Control console.
Ergonomic design and color-coded for easy identification.

Deluxe, 21-inch (53.3 cm) highback seat.
Deluxe, 21-inch (53.3 cm) highback seat with spring suspension provides a smooth, comfortable ride on uneven terrain (Standard on the X584, X590).

Hydraulic Power Steering.
Hydraulic power steering makes 4-wheel steering even easier and provides excellent maneuverability and a 12-inch (30 cm) uncut circle radius on the X584 with 54-in. mower. (Standard on the X580, X584, X590).

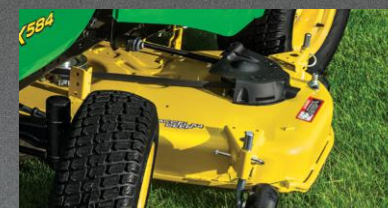
Four-wheel steering.
Designed for ultimate trimmability. All four wheels on the X584 steer the tractor instead of just the front two.



Easy-To-Read Display. Helps you see what's "what" including a tachometer with best cut target zone. It displays engine speed and target zone for the best cut quality.



Traction Assist. A traction assist control locks the rear transaxle, so both rear wheels work together with maximum traction. It's an exceptionally effective method to negotiate muddy ground, or to climb a hill.



Accel Deep™ Mower Decks. Designed to mow fast well, the deeper "draw" and flat top design create a better quality of cut at faster ground speeds.

**Term limited to 4 years or 500 hours used, whichever comes first, and varies by model. See the LIMITED WARRANTY FOR NEW JOHN DEERE TURF AND UTILITY EQUIPMENT AT JohnDeere.com or www.JohnDeere.ca/TUVWarranty for details.

**PRECISE. COMFORTABLE.
AND AFFORDABLE TOO.**

The S240 Lawn Tractor may even make your morning. You'll certainly make mowing better, faster with a 48-in. (122-cm) Accel Deep™ Mower Deck model. Or make it feed your lawn the easy way with an optional MulchControl™ Kit. And make it cool and comfortable with an open back 15-in. (38-cm) seat to catch a cool breeze. Make it yours.

Comfortable, open-back seat to capture breezes, keeping you cool.

48-in. (122-cm) Accel Deep™ Mower Deck. Designed to mow better, faster. The deep "draw" and flat top design create a quality of cut at faster ground speeds. Now available on the S240.

Side-by-side pedals. Lets you easily change from forward to reverse with two-pedal foot control for effortless speed and direction changes.

Large, turf-friendly tires for a smooth ride and easy turns.

¼-in. height-of-cut adjustment. Easily adjust from 1-4 inches (2.5-10.2-cm) in ¼-in. (0.64-cm) increments for a precision cut.

MulchControl™ Option. A John Deere exclusive, mulches when you want with a flip of a lever.

Powerful, smooth running 18.5-hp* (13.8-kW) V-twin engine. The kind you find in our Select Series models.

