

SkyLine ProS Electric Combi Oven 6GN1/1

ITEM # _____
 MODEL # _____
 NAME # _____
 SIS # _____
 AIA # _____



217610 (ECO61K2C0)

SkyLine ProS Combi Boilerless Oven with touch screen control, 6x1/1GN, electric, 2 cooking modes (recipe program, manual), automatic cleaning

217620 (ECO61K2A0)

SkyLine ProS Combi Boilerless Oven with touch screen control, 6x1/1GN, electric, 2 cooking modes (recipe program, manual), automatic cleaning

Short Form Specification

Item No.

Combi oven with high resolution full touch screen interface, multilanguage.

- Boilerless steaming function to add and retain moisture.
- OptiFlow air distribution system to achieve maximum performance with 7 fan speed levels.
- SkyClean: Automatic and built-in self cleaning system. 5 automatic cycles (soft, medium, strong, extra strong, rinse-only) and green functions to save energy, water, detergent and rinse aid.
- Cooking modes: Programs (a maximum of 1000 recipes can be stored and organized in 16 different categories); Manual; EcoDelta cooking cycle.
- Special functions: MultiTimer cooking, Plan-n-Save to cut running costs, Make-it-Mine to customize interface, SkyHub to customize homepage, agenda MyPlanner, automatic backup mode to avoid downtime.
- USB port to download HACCP data, programs and settings. Connectivity ready.
- Single sensor core temperature probe.
- Double-glass door with LED lights.
- Stainless steel construction throughout.
- Supplied with n.1 tray rack 1/1 GN, 67 mm pitch.

Main Features

- High resolution full touch screen interface (translated in more than 30 languages) - color-blind friendly panel.
- Boilerless steaming function to add and retain moisture for high quality, consistent cooking results.
- Dry hot convection cycle (max 300 °C) ideal for low humidity cooking. Automatic moistener (11 settings) for boiler-less steam generation.
- EcoDelta cooking: cooking with food probe maintaining preset temperature difference between the core of the food and the cooking chamber.
- Programs mode: a maximum of 1000 recipes can be stored in the oven's memory, to recreate the exact same recipe at any time. The recipes can be group in 16 different categories to better organize the menu. 16-step cooking programs also available.
- MultiTimer function to manage up to 20 different cooking cycles at the same time, improving flexibility and ensuring excellent cooking results. Can be saved up to 200 MultiTimer programs.
- OptiFlow air distribution system to achieve maximum performance in cooking evenness and temperature control thanks to a special design of the cooking chamber combined with high precision variable speed fan and venting valve.
- Fan with 7 speed levels from 300 to 1500 RPM and reverse rotation for optimal evenness. Fan stops in less than 5 seconds when door is opened.
- Single sensor core temperature probe included.
- Pictures upload for full customization of cooking cycles.
- Automatic fast cool down and pre-heat function.
- Reduced power function for customized slow cooking cycles.
- SkyClean: Automatic and built-in self cleaning system. 5 automatic cycles (soft, medium, strong, extra strong, rinse-only) and green functions to save energy, water, detergent and rinse aid. Also programmable with delayed start.
- 3 different chemical options available: solid (phosphate-free), liquid (requires optional accessory), enzymatic.
- Plan-n-Save function organizes the cooking sequence of the chosen cycles optimizing the work in the kitchen from a time and energy efficiency point of view.
- Make-it-mine feature to allow full personalization or locking of the user interface.
- SkyHub lets the user group the favorite functions in the homepage for immediate access.
- MyPlanner works as an agenda where the user can plan the daily work and receive personalized alerts for each task.
- GreaseOut: predisposed for integrated grease drain and collection for safer operation (dedicated base as optional accessory).
- USB port to download HACCP data, share cooking programs and configurations. USB port also allows to plug-in sous-vide probe

APPROVAL: _____

(optional accessory).

- Connectivity ready for real time access to connected appliances from remote and HACCP monitoring (requires optional accessory).
- Trainings and guidances supporting materials easily accessible by scanning QR-Code with any mobile device.
- Back-up mode with self-diagnosis is automatically activated if a failure occurs to avoid downtime.
- Automatic consumption visualization at the end of the cycle.
- Capacity: 6 GN 1/1 trays.
- Connectivity ready for real time access to connected appliances from remote and data monitoring (requires optional accessory - contact the Company for more details).

Construction

- Human centered design with 4-star certification for ergonomics and usability.
- Wing-shaped handle with ergonomic design and hands-free opening with the elbow, making managing trays simpler (Registered Design at EPO).
- Double thermo-glazed door with open frame construction, for cool outside door panel. Swing hinged easy-release inner glass on door for easy cleaning.
- Seamless hygienic internal chamber with all rounded corners for easy cleaning.
- 304 AISI stainless steel construction throughout.
- Front access to control board for easy service.
- IPX 5 spray water protection certification for easy cleaning.
- Supplied with n.1 tray rack 1/1 GN, 67 mm pitch.

Optional Accessories

- Water softener with cartridge and flow meter for 6 & 10 GN 1/1 ovens (low-medium steam usage - less than 2hrs per day full steam) PNC 920002 ☐
- Water softener with cartridge and flow meter (high steam usage) PNC 920003 ☐
- Water softener with salt for ovens with automatic regeneration of resin PNC 921305 ☐
- Resin sanitizer for water softener (921305) PNC 921306 ☐
- Wheel kit for 6 & 10 GN 1/1 and 2/1 GN oven base (not for the disassembled one) PNC 922003 ☐
- Pair of AISI 304 stainless steel grids, GN 1/1 PNC 922017 ☐
- Pair of grids for whole chicken (8 per grid - 1,2kg each), GN 1/1 PNC 922036 ☐
- AISI 304 stainless steel grid, GN 1/1 PNC 922062 ☐
- Grid for whole chicken (4 per grid - 1,2kg each), GN 1/2 PNC 922086 ☐
- External side spray unit (needs to be mounted outside and includes support to be mounted on the oven) PNC 922171 ☐
- Baking tray for 5 baguettes in perforated aluminum with silicon coating, 400x600x38mm PNC 922189 ☐
- Baking tray with 4 edges in perforated aluminum, 400x600x20mm PNC 922190 ☐

- Baking tray with 4 edges in aluminum, 400x600x20mm PNC 922191 ☐
- Pair of frying baskets PNC 922239 ☐
- AISI 304 stainless steel bakery/pastry grid 400x600mm PNC 922264 ☐
- Double-step door opening kit PNC 922265 ☐
- Grid for whole chicken (8 per grid - 1,2kg each), GN 1/1 PNC 922266 ☐
- USB probe for sous-vide cooking PNC 922281 ☐
- Grease collection tray, GN 1/1, H=100 mm PNC 922321 ☐
- Kit universal skewer rack and 4 long skewers for Lengthwise ovens PNC 922324 ☐
- Universal skewer rack PNC 922326 ☐
- 4 long skewers PNC 922327 ☐
- Volcano Smoker for lengthwise and crosswise oven PNC 922338 ☐
- Water nanofilter for 6 & 10 GN 1/1 ovens PNC 922342 ☐
- External reverse osmosis filter for 6 & 10 GN 1/1 ovens PNC 922343 ☐
- Multipurpose hook PNC 922348 ☐
- 4 flanged feet for 6 & 10 GN, 2", 100-130mm PNC 922351 ☐
- Grid for whole duck (8 per grid - 1,8kg each), GN 1/1 PNC 922362 ☐
- Tray support for 6 & 10 GN 1/1 disassembled open base PNC 922382 ☐
- Wall mounted detergent tank holder PNC 922386 ☐
- SONDA SPILLONE USB PNC 922390 ☐
- Tray rack with wheels, 6 GN 1/1, 65mm pitch PNC 922600 ☐
- Tray rack with wheels, 5 GN 1/1, 80mm pitch PNC 922606 ☐
- Bakery/pastry tray rack with wheels 400x600mm for 6 GN 1/1 oven and blast chiller freezer, 80mm pitch (5 runners) PNC 922607 ☐
- Slide-in rack with handle for 6 & 10 GN 1/1 oven PNC 922610 ☐
- Open base with tray support for 6 & 10 GN 1/1 oven PNC 922612 ☐
- Cupboard base with tray support for 6 & 10 GN 1/1 oven PNC 922614 ☐
- Hot cupboard base with tray support for 6 & 10 GN 1/1 oven holding GN 1/1 or 400x600mm PNC 922615 ☐
- External connection kit for liquid detergent and rinse aid PNC 922618 ☐
- Grease collection kit for GN 1/1-2/1 cupboard base (trolley with 2 tanks, open/close device and drain) PNC 922619 ☐
- Stacking kit for 6+6 GN 1/1 ovens or electric 6+10 GN 1/1 GN ovens PNC 922620 ☐
- Trolley for slide-in rack for 6 & 10 GN 1/1 oven and blast chiller freezer PNC 922626 ☐
- Trolley for mobile rack for 2 stacked 6 GN 1/1 ovens on riser PNC 922628 ☐
- Trolley for mobile rack for 6 GN 1/1 on 6 or 10 GN 1/1 ovens PNC 922630 ☐
- Riser on feet for 2 6 GN 1/1 ovens or a 6 GN 1/1 oven on base PNC 922632 ☐
- Riser on wheels for stacked 2x6 GN 1/1 ovens, height 250mm PNC 922635 ☐
- Stainless steel drain kit for 6 & 10 GN oven, dia=50mm PNC 922636 ☐
- Plastic drain kit for 6 & 10 GN oven, dia=50mm PNC 922637 ☐

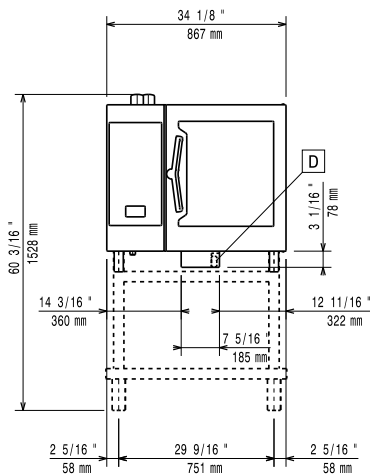
- Trolley with 2 tanks for grease collection ☐ PNC 922638
- Grease collection kit for open base (trolley with 2 tanks, open/close device and drain) ☐ PNC 922639
- Wall support for 6 GN 1/1 oven ☐ PNC 922643
- Dehydration tray, GN 1/1, H=20mm ☐ PNC 922651
- Flat dehydration tray, GN 1/1 ☐ PNC 922652
- Open base for 6 & 10 GN 1/1 oven, disassembled - NO accessory can be fitted with the exception of 922382 ☐ PNC 922653
- Bakery/pastry rack kit for 6 GN 1/1 oven with 5 racks 400x600mm and 80mm pitch ☐ PNC 922655
- Stacking kit for gas 6 & 10 GN 1/1 oven placed on 7kg and 15kg crosswise blast chiller freezer ☐ PNC 922657
- Heat shield for stacked ovens 6 GN 1/1 on 6 GN 1/1 ☐ PNC 922660
- Heat shield for stacked ovens 6 GN 1/1 on 10 GN 1/1 ☐ PNC 922661
- Heat shield for 6 GN 1/1 oven ☐ PNC 922662
- Compatibility kit for installation of 6 GN 1/1 electric oven on previous 6 GN 1/1 electric oven (old stacking kit 922319 is also needed) ☐ PNC 922679
- Fixed tray rack for 6 GN 1/1 and 400x600mm grids ☐ PNC 922684
- Kit to fix oven to the wall ☐ PNC 922687
- Tray support for 6 & 10 GN 1/1 oven base ☐ PNC 922690
- 4 adjustable feet with black cover for 6 & 10 GN ovens, 100-115mm ☐ PNC 922693
- Wifi board (NIU) ☐ PNC 922695
- ETHERNET BOARD (NIU) ☐ PNC 922696
- Detergent tank holder for open base ☐ PNC 922699
- Bakery/pastry runners 400x600mm for 6 & 10 GN 1/1 oven base ☐ PNC 922702
- Wheels for stacked ovens ☐ PNC 922704
- Spit for lamb or suckling pig (up to 12kg) for GN 1/1 ovens ☐ PNC 922709
- Mesh grilling grid, GN 1/1 ☐ PNC 922713
- Probe holder for liquids ☐ PNC 922714
- Odour reduction hood with fan for 6 & 10 GN 1/1 electric ovens ☐ PNC 922718
- Odour reduction hood with fan for 6+6 or 6+10 GN 1/1 electric ovens ☐ PNC 922722
- Condensation hood with fan for 6 & 10 GN 1/1 electric oven ☐ PNC 922723
- Condensation hood with fan for stacking 6+6 or 6+10 GN 1/1 electric ovens ☐ PNC 922727
- Exhaust hood with fan for 6 & 10 GN 1/1 ovens ☐ PNC 922728
- Exhaust hood with fan for stacking 6+6 or 6+10 GN 1/1 ovens ☐ PNC 922732
- Exhaust hood without fan for 6&10 1/1GN ovens ☐ PNC 922733
- Exhaust hood without fan for stacking 6+6 or 6+10 GN 1/1 ovens ☐ PNC 922737
- Fixed tray rack, 5 GN 1/1, 85mm pitch ☐ PNC 922740
- 4 high adjustable feet for 6 & 10 GN ovens, 230-290mm ☐ PNC 922745
- Tray for traditional static cooking, H=100mm ☐ PNC 922746
- Double-face griddle, one side ribbed and one side smooth, 400x600mm ☐ PNC 922747
- Trolley for grease collection kit ☐ PNC 922752
- Water inlet pressure reducer ☐ PNC 922773
- Kit for installation of electric power peak management system for 6 GN and 10 GN ovens ☐ PNC 922774
- Extension for condensation tube, 37cm ☐ PNC 922776
- Non-stick universal pan, GN 1/1, H=20mm ☐ PNC 925000
- Non-stick universal pan, GN 1/1, H=40mm ☐ PNC 925001
- Non-stick universal pan, GN 1/1, H=60mm ☐ PNC 925002
- Double-face griddle, one side ribbed and one side smooth, GN 1/1 ☐ PNC 925003
- Aluminum grill, GN 1/1 ☐ PNC 925004
- Frying pan for 8 eggs, pancakes, hamburgers, GN 1/1 ☐ PNC 925005
- Flat baking tray with 2 edges, GN 1/1 ☐ PNC 925006
- Baking tray for 4 baguettes, GN 1/1 ☐ PNC 925007
- Potato baker for 28 potatoes, GN 1/1 ☐ PNC 925008
- Non-stick universal pan, GN 1/2, H=20mm ☐ PNC 925009
- Non-stick universal pan, GN 1/2, H=40mm ☐ PNC 925010



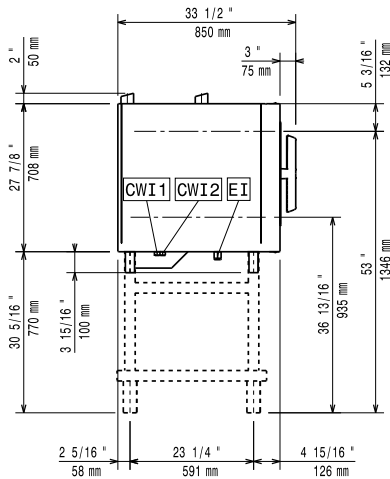
Electrolux
PROFESSIONAL

SkyLine ProS Electric Combi Oven 6GN1/1

Front

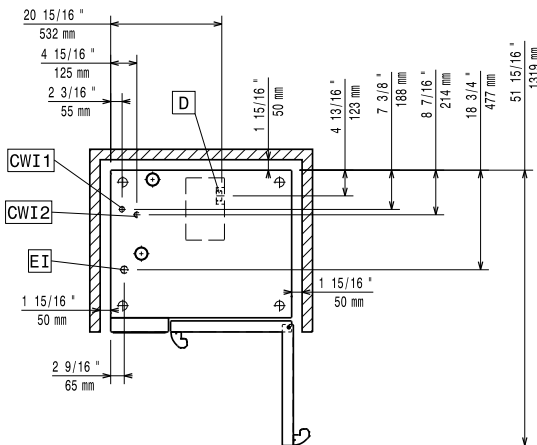


Side



CWI1 = Cold Water inlet 1 (cleaning) EI = Electrical inlet (power)
CWI2 = Cold Water Inlet 2 (steam generator)
D = Drain
DO = Overflow drain pipe

Top



Electric

Supply voltage:

217610 (ECO E61K2C0)	220-240 V/3 ph/50-60 Hz
217620 (ECO E61K2A0)	380-415 V/3N ph/50-60 Hz

Electrical power, default:

11.1 kW

Default power corresponds to factory test conditions.

When supply voltage is declared as a range the test is performed at the average value. According to the country, the installed power may vary within the range.

Electrical power max.:

11.8 kW

Circuit breaker required

Water:

Water inlet connections "CWI1-CWI2":

3/4"

Pressure, bar min/max:

1-4.5 bar

Drain "D":

50mm

Max inlet water supply temperature:

30 °C

Hardness:

5 °fH / 2.8 °dH

Chlorides:

<10 ppm

Conductivity:

>285 µS/cm

Electrolux recommends the use of treated water, based on testing of specific water conditions.

Please refer to user manual for detailed water quality information.

Installation:

Clearance:

Clearance: 5 cm rear and right hand sides.

Suggested clearance for service access:

50 cm left hand side.

Capacity:

Trays type:

6 - 1/1 Gastronorm

Max load capacity:

30 kg

Key Information:

Door hinges:

External dimensions, Width: 867 mm

External dimensions, Height: 808 mm

External dimensions, Depth: 775 mm

Weight: 112.5 kg

Net weight: 112.5 kg

Shipping weight: 127.5 kg

Shipping volume: 0.84 m³

SkyLine ProS
Electric Combi Oven 6GN1/1

The company reserves the right to make modifications to the products without prior notice. All information correct at time of printing.

2021.01.11

