



**ACKURETTA**  
A Pac-Dent Company



# **CLEANI with Tank<sup>Plus</sup>**

## Essential User Guide

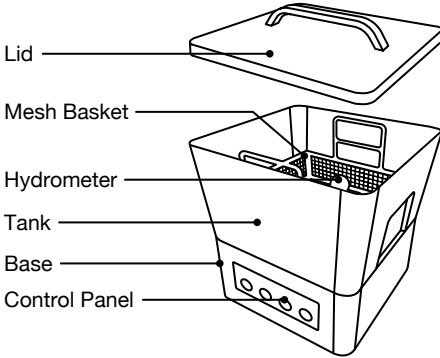
Your shortcut to successful printing



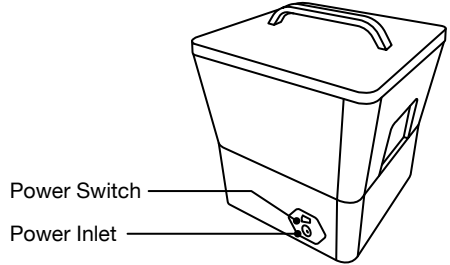
Register Your  
Device & Warranty

# Product Overview

Front

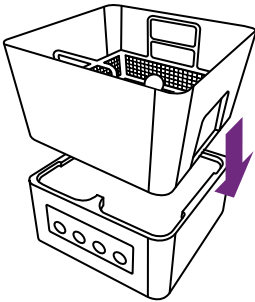


Back

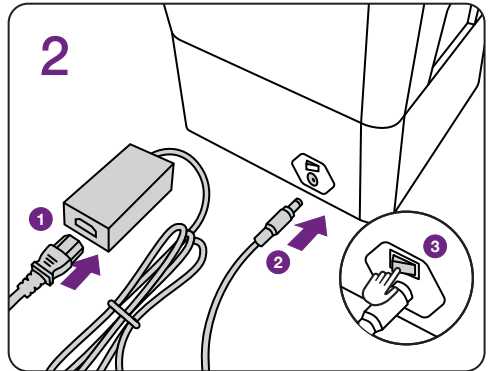


## Setup Guide

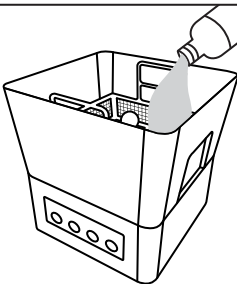
1



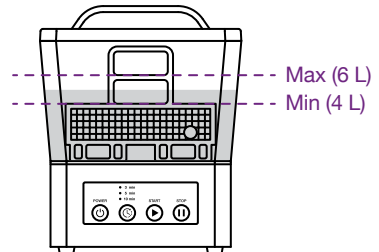
2



3



Fill the tank with 95% ~ 99% IPA with the hydrometer in the tank.



The alcohol level should cover the basket but should not exceed the middle bar of the handle.



Keep alcohol away from ignition sources.

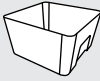


Always wear gloves when handling alcohol or uncured resin.

# Package Contents



Base



Tank



Lid



Mesh Basket



Hydrometer

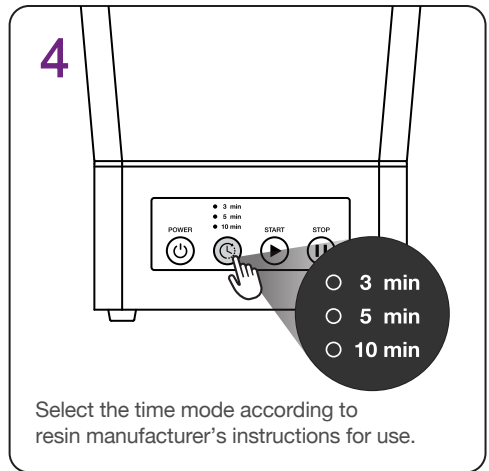
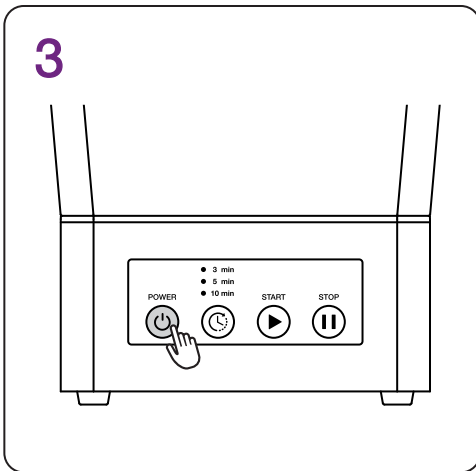
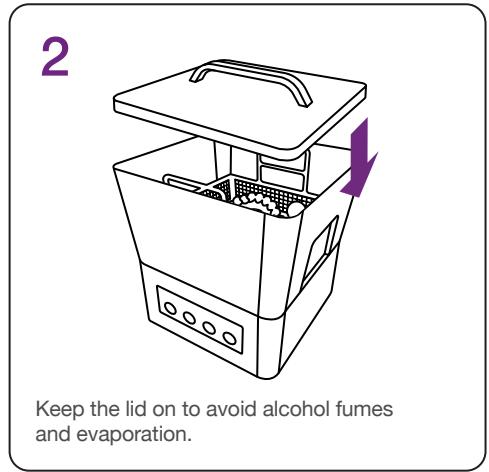
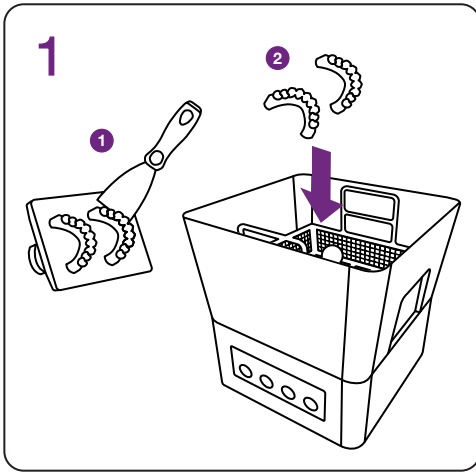


Power Cable



AC Adapter

# Cleaning Process

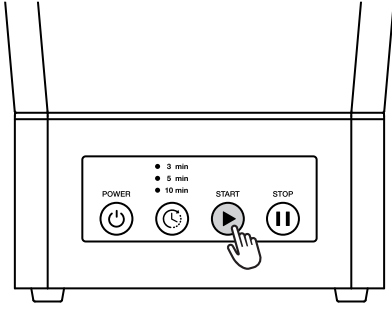


Use UV-filtered lights in your workspace to prevent unintended curing.

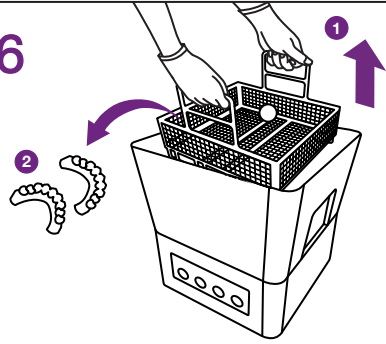


After cleaning is completed, remove and dry the applications by applying air to remove any remaining liquid.

5

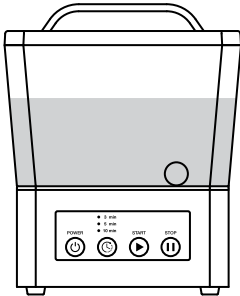


6

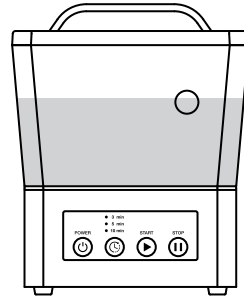


Remove the applications promptly after washing is completed.  
Do not let them sit in the alcohol for more than 10 minutes.

## Hydrometer



The hydrometer remains submerged when the alcohol continues to be reusable.



The hydrometer floats to the surface when the alcohol is no longer effective and needs to be changed.

## Technical Specifications

Dimensions 25 (W) x 24 (D) x 31 (H) cm  
9.8 (W) x 9.4 (D) x 12.2 (H) in

Weight 2.7 kg  
6 lbs

Power Input 100-240VAC, 50-60Hz

Rated Power 48 W

Tank Size 25 (W) x 24 (D) x 20 (H) cm  
9.8 (W) x 9.4 (D) x 7.9 (H) in

Base Size 23 (W) x 23 (D) x 12 (H) cm  
9.1 (W) x 9.1 (D) x 4.7 (H) in

Tank Volume 7 L

Time Control 3, 5, or 10 minutes



# Frequently Asked Questions

## Q1 I have just received CLEANI, how do I get started?

After receiving your CLEANI, register your device through the User Dashboard so that your warranty is activated on the date of purchase. The User Dashboard contains resources to help you get started, access troubleshooting, and get support from the Ackuretta Customer Success Team.

After unboxing, plug in the power cable, set up the CLEANI and start the cleaning process as shown in the Quick Start Guide.



User  
Dashboard

[Learn More](#)



CLEANI  
Warranty Policy

[Learn More](#)



Ackuretta  
Installation Portal

[Learn More](#)

## Q2 What liquid can I use to clean my printed applications in CLEANI?

We recommend using 95%~99% alcohol (Isopropyl alcohol or Ethanol).

## Q3 What PPE (Personal Protective Equipment) should I use while operating CLEANI?

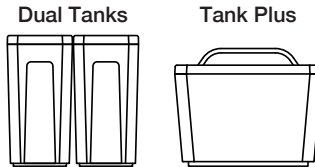
- Eye protection: Resin coming into contact with your eyes can be harmful.
- Protective gloves: Contact with alcohol or uncured resin may cause skin irritation.
- Respiratory protection: In an insufficiently ventilated area, resins may give off fumes or vapors that can be harmful.



## Q4 What types of tanks are available for CLEANI and which one better fits my workflow?

There are two types of tanks that can be used with CLEANI: Dual Tanks and Tank Plus.

- Dual Tanks are twin separate tanks that are smaller than Tank Plus.
- We recommend Dual Tanks if you print a small quantity of applications or biocompatible workflows that require two-step washing. Additional tanks can be purchased to separate resins used by biocompatibility, color, and shade.
- We recommend Tank Plus if you print a large quantity of applications, such as high-volume model production.



## Q5 How does CLEANI wash my printed applications more efficiently than a manual wash?

CLEANI is a washer that uses a stirrer to create a vortex. This vortex ensures that all surfaces of the printed applications are exposed to the cleaning solution, which can be challenging to achieve with manual cleaning methods.

Cleaning by hand is not only messy, but also exposes you to potentially harmful resins and cleaning solutions. CLEANI allows you to minimize direct contact with these substances while improving safety and reducing the risk of skin exposure or inhalation.

Certain resin manufacturers recommend specific cleaning processes. Check the IFU of the resin manufacturer to ensure you follow the right process.

## Q6 How can I clean biocompatible resins with CLEANI?

CLEANI is a washer designed specifically for 3D printed objects, and is suitable for Class IIa and IIb resins. You should not mix non-classified, Class I and Class II materials in the tanks.

## Q7 Which timer mode should I select to clean my printed applications?

The recommended cleaning time can vary depending on several factors, such as the specific resin used, the size and complexity of the applications, and the method of cleaning. Generally, we recommend cleaning most applications twice for three minutes with Dual Tanks and once for five minutes with Tank Plus.

Once washing is completed, we recommend removing the printed applications promptly, as letting them sit for more than 10 minutes in the alcohol risks discoloration.

Certain resin manufacturers recommend specific cleaning times and processes. Check the IFU of the resin manufacturer to ensure you follow the right process.

## **Q8** How should I dry the printed applications after cleaning them with CLEANI?

We recommend drying the printed applications with an air blower (compressed air or electric), applying air over the applications' surface to remove any remaining liquid.

## **Q9** When should I change the alcohol in the tank?

When kept in the tank, the hydrometer (red ball) will float to the surface when the alcohol needs to be changed.

We suggest keeping the hydrometer inside the tank even during the cleaning process as it will not harm the printed applications when washed together.

## **Q10** What should I do with used alcohol?

Disposing of alcohol contaminated with resin requires some care due to environmental and safety considerations. We recommend:

- Storing the alcohol in a container specifically designated for resin cleaning.
- Placing the container in a well-ventilated area with natural light to evaporate the alcohol. Once the alcohol has evaporated, you may be left with a residue of cured resin.
- Checking your local regulations for the proper disposal of hazardous waste. Many areas have designated facilities or programs for disposing of hazardous materials like cured resin.





# ACKURETTA

---

A Pac-Dent Company