



# TT5

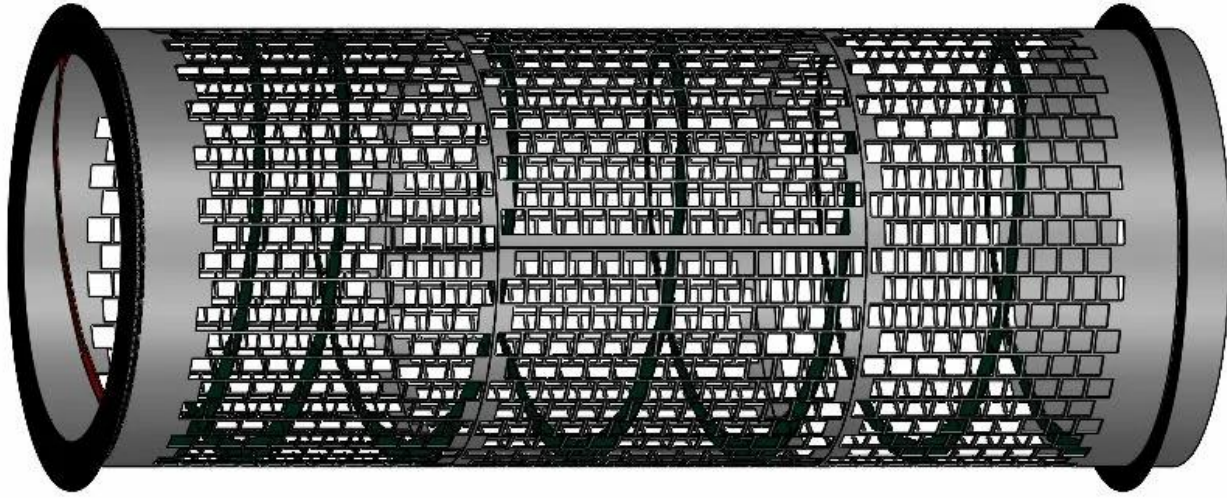
## Trommel Screen



**GREEN-TEC™**  
A TEREX BRAND



Compact yet uncompromised, the TT5 has been intuitively designed offering operators unrivalled application flexibility, production rates and serviceability. Fully equipped with a Stage V/Tier 4 engine and the latest intelligent screening technology, the TT5 delivers a superior and cost-efficient product. Ideal for small to medium sized operations where space may be limited, the highly versatile TT5 is available in both tracked and wheeled and can screen a variety of material including compost, biomass, soil, gravel and waste.



A **Trommel Screen**, or rotary screen, is a mechanical screening machine used to separate materials. It consists of a perforated cylindrical drum that rotates, material is feed in at one end.

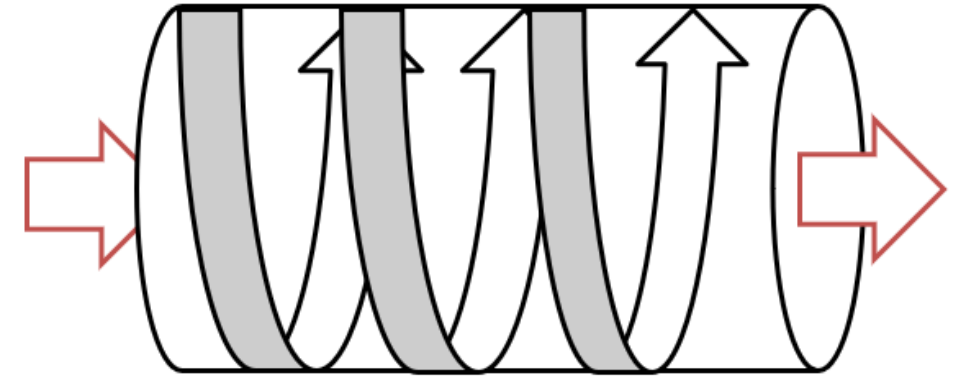
As the drum rotates, the material inside is lifted and tumbled, allowing smaller particles to pass through the screen openings while larger particles exit at the other end.



There is two main types of **Trommel Screen**, Spiral and an incline trommel. The difference is how they move material through the drum.

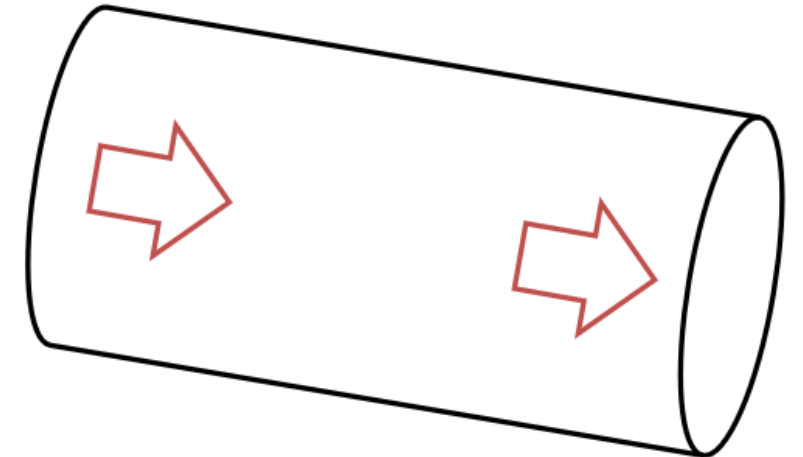
## **Spiral trommel**

A flat drum with an internal screw or spiral that moves material through the drum. The rotating drum agitates and sieves the material to allow it to separate particles.



## **Incline trommel**

An inclined drum uses lifter bars to lift and drop material, the inline causes the material to move through the drum as it drops.



The **TT5** is a Spiral Trommel, the benefit is that when the material drops, long slender particles can be prone to dropping through the screen into the fines.

## Quick & Easy Set Up, No Tooling Required

The TT5 features an intuitive control system and 'push to start' buttons allowing the operator to effortlessly configure the machine to suit the required application. The intelligent feed control system continually monitors the machine adjusting the feeder speed to optimise screening performance and throughput. Being driven at the head, the feeder provides an excellent and continuous feed rate, reducing slippage in difficult applications. The feeder has also been designed as a slide out cassette which allows for easy maintenance and quick and simple belt changing. The clear tunnel area underneath the feeder prevents material build up and allows any material in this area to drop directly onto the ground.

Providing a total screening area of 23m<sup>2</sup> the TT5 is fitted with a 1.8m x 4.7m horizontal drum with spiral design. With double-sided drum access via 180 degrees opening side doors, maintenance and drum changes can be carried out with ease. The TT5 has been designed to accept several other trommel manufacturers' drums, enabling it to integrate seamlessly into an operators existing fleet.



# Trommel Screening

Equipped with the latest Stage V engine requirements and has been designed to provide excellent fuel efficiency and low operating costs. The swing out engine cradle provides unprecedented service access enabling daily checks and maintenance to be carried out safely from ground level. All the conveyors are fully modular allowing each to be removed independently, with the fines and oversize also lowering to ground level for maintenance.

An adaptable trommel suitable for all market conditions, the TT5 is available as a full EU Whole Vehicle Type Approved wheeled unit or as a tracked unit where increased site mobility is required.



# TT5 Technical Specification



## TRANSPORT DIMENSIONS (TRACKED)

Width: 2.9m (9' 5")

Height: 3.4m (11' 2")

Length: 9.8m (32' 2")

Weight: 18,000kg (40,000 lbs) approx.

## TRANSPORT DIMENSIONS (WHEELED)

Width: 2.55m (8' 4")

Height: 4.0m (13' 2")

Length: 11.3m (37' 1")

Weight: 17,200kg (37,480 lbs) approx.

# TT5 Technical Specification



## WORKING DIMENSIONS (TRACKED)

Width: 7.1m (23' 3")

Length: 13.3m (43' 8")

Feed Height: 2.8m (9' 2")

## WORKING DIMENSIONS (WHEELED)

Width: 7.4m (24' 3")

Length: 14.7m (48' 3")

Feed Height: 2.85m (9' 4")



## HOPPER AND BELT FEEDER

- 5.0m<sup>3</sup> (6.5yd<sup>3</sup>) capacity 4.0m (13' 1") feeder length
- 1050mm (41") 3 ply plain belt, 5 + 1.5 covers
- Head drum drive system with compact gearbox solution
- Slide out feeder cassette for maintenance
- Hopper extensions

## COLLECTION CONVEYOR

- 1400mm (55") 3 ply plain belt, 4 + 2 covers
- Cassette style – removable for maintenance
- Head drum ø184mm
- Rear deflector plate to adjust loading point onto transfer conveyor

## TRANSFER CONVEYOR

- 600mm (24") 3 ply plain belt, 4 + 2 covers
- Cassette style – removable for maintenance
- Head drum ø184mm

All conveyors are built to an individual modular design reducing maintenance downtime

Fines and oversize conveyors lower to ground level hydraulically

Advanced sealing and feed boot design ensure smooth material transfer and stockpiling

## FINES DISCHARGE CONVEYOR

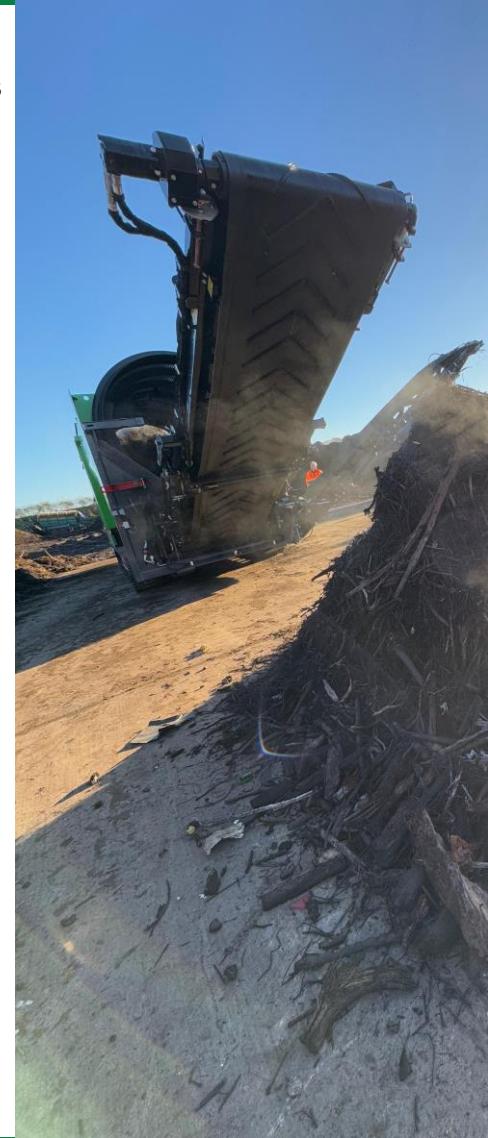
- 800mm (31") 3 ply chevron belt, 3 + 1.5 covers
- Discharge Height;
  - Tracked Machine – Max 3.2m (10' 6")
  - Wheeled Machine – Max 3.1m (10' 5")

- Discharge LHS

- Head drum ø184mm

## OVERSIZE CONVEYOR

- 1000mm (39") 3 ply chevron belt, 3 + 1.5 covers
- Discharge Height: Max 3.4m (11' 2")
- Head drum ø184mm
- Variable speed control



# TT5 Technical Specification



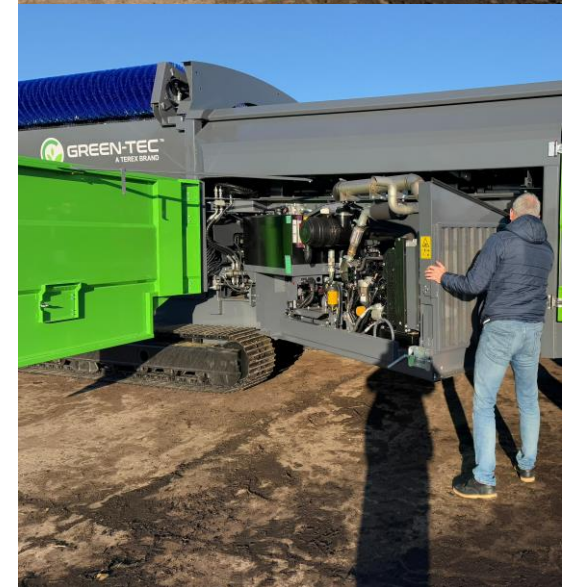
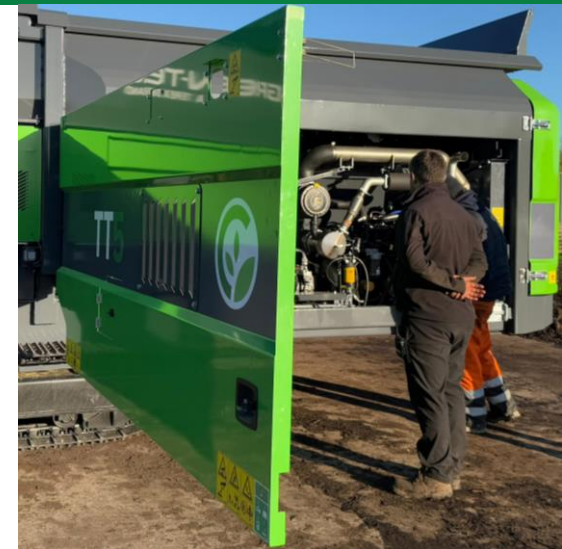
## DRUM

Double-sided unrestricted drum access via two large swing-out doors, enabling easy maintenance and cleaning

- 4.7m (15' 5") Length & 1.8m (5' 1") Diameter
- Single welded chain and drive sprocket
- Compatible with Doppstadt SM 518
- Horizontal drum with Spiral design for material transfer
- Easily removable for maintenance and application flexibility
- Active running pressure monitoring system to adjust feed rate
- Full drum hydraulic folding cleaning brush;
- Tracked Machine –  $\varnothing 500\text{mm}$
- Wheeled Machine –  $\varnothing 600\text{mm}$
- 1 piece drum door opening both sides

## POWERUNIT & CONTROL

- CAT C2.2 55kW (74HP) Stage V / Tier 4 Final (Dual Certified)
- CAT C4.4 62kW (83HP) Stage IIIA (Option)
- Hydrostatic drum and feeder drive
- Fuel tank capacity 320L (70 gal)
- Swing out engine for maintenance
- User friendly control system





## **TRACKED UNDERCARRIAGE**

- Bolt on tracks
- 400mm (16") shoe
- 3500mm (11' 5") sprocket centres

## **BOGIE**

- 2 axles, 8 studs
- Max speed 80km/h (50mph)
- ABS Suspension type leaf spring
- Super single c/w 385/55 R22 tyres
- Pintle hook design
- European Whole Vehicle Type Approval

## **OPTIONS**

- Remote control
- Reversing engine fan
- Remote control tipping grid
- Auxiliary oil supply connection (1) 17 lpm
- Magnetic head drums
- Punch plate or mesh drum
- Telematics
- Different colour



**GREEN-TEC**™  
A TEREX BRAND