

Pull Handles - Arch Shaped Metal

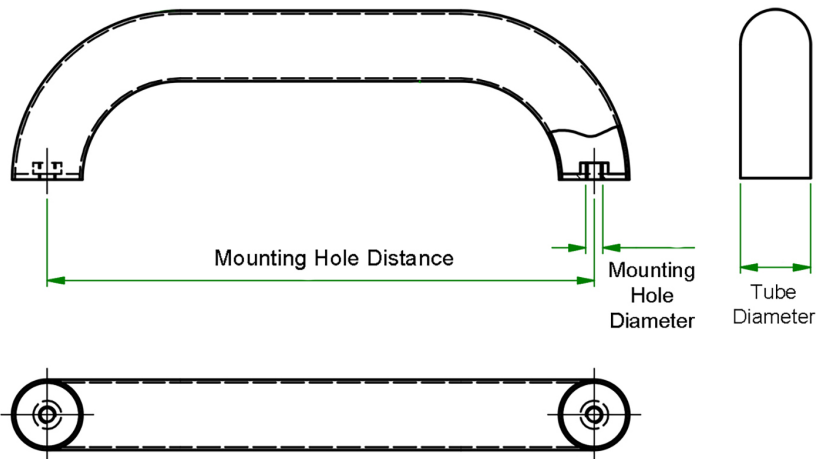
The range of pull handles designed in a round arch-shape have a semi flat profile that makes them ideal when two handles are required on close opening panels.

Specifications

Material: Zinc Alloy, Stainless Steel

Features

- Lightweight large handles.



Part Number	Overall Length	Overall Height	Handle Material	Grip Height	Mounting Hole Distance
491377	195.0 mm 7.677 in	59.0 mm 2.323 in	Stainless Steel	35.0 mm	195.0 mm 7.677 in
491378	300.0 mm 11.811 in	75.0 mm 2.953 in	Stainless Steel	50.0 mm	300.0 mm 11.811 in
20021979	121.0 mm 4.764 in	28.0 mm 1.102 in	Zinc Alloy	22.5 mm	102.0 mm 4.016 in