

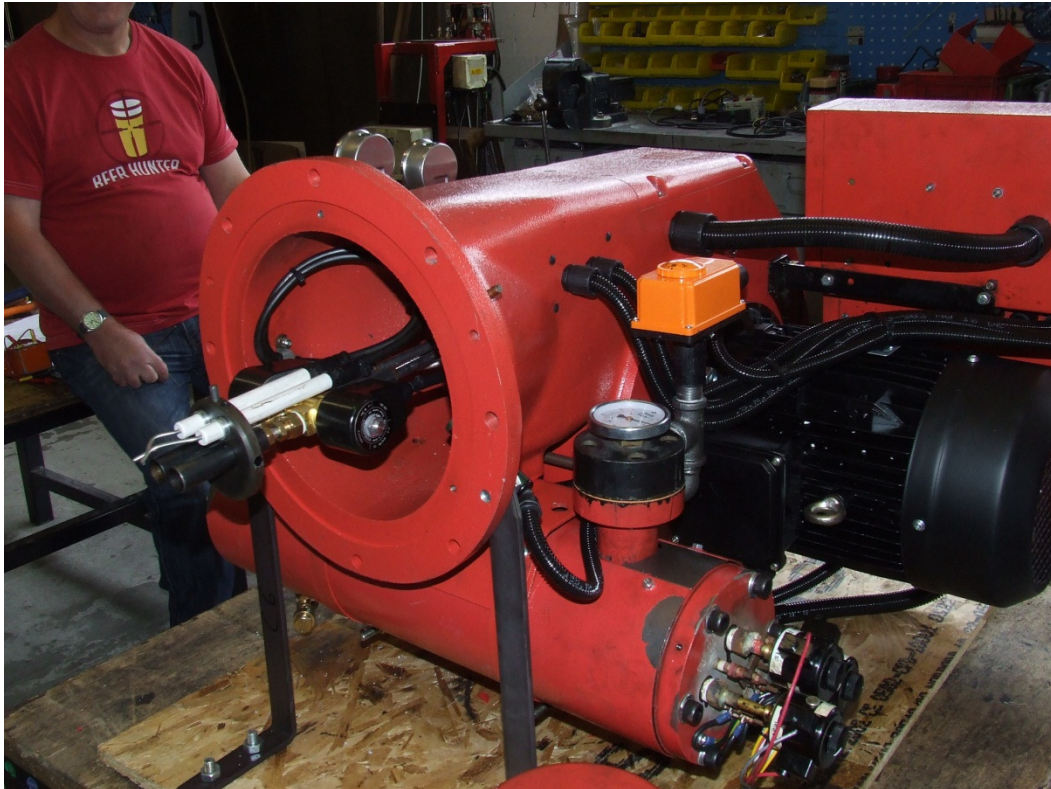
**NOG Heavy Oil Burner – LOW COST Specification**

- Oil solenoid valves moved close to nozzles in head.
- No hinged extension.
- Hot oil recirculation at back of solenoid valves with no nozzle tip shut off.
- Oil pump with integral pressure reducing valve – oil return from head controlled by simple solenoid valve in return line.
- Control panel with simple fuses to replace MCBs



Complete burner showing oil heater tank located under the burner casing and oil temperature circulating interlock / thermostat.





View of oil solenoid valves located close to oil nozzles in burner head.



View of oil pump and recirculating oil pipework.