



# POWERREX SL6000

**6 Tonne Wide-Body 4 Post Hoist**  
**- Ideal For Commercial Vehicles**

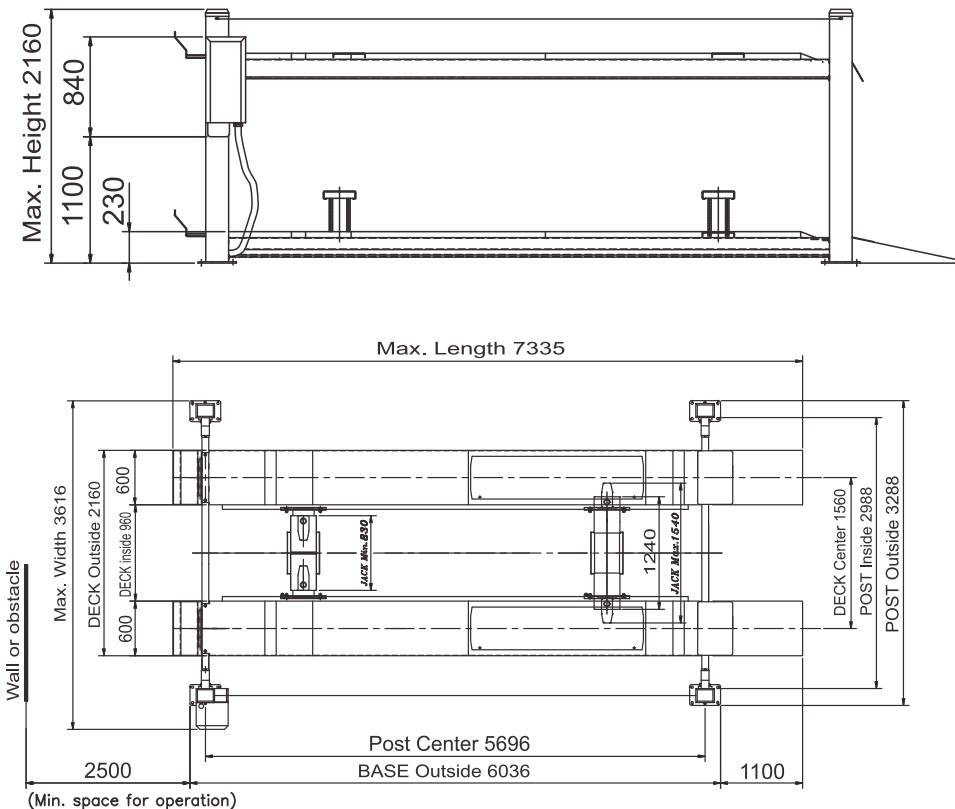
Manufactured In Korea, the Powerrex SL6000 4 Post vehicle hoist is a Wide Body Hoist with a 6 Tonne Lift Capacity. The SL6000 also includes 3 Tonne Jacking bridges, permitting the operator to lift the wheels free of the platform.



## Feature

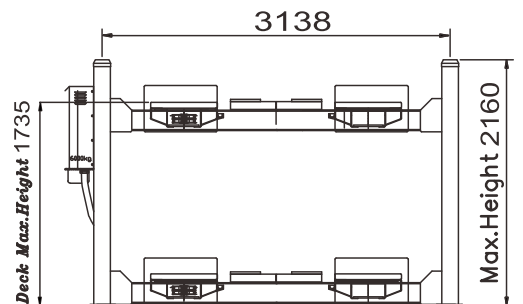
- 6 Tonne Lift Capacity
- "Extra" Wide between posts
- Lift Height of 1796mm
- Safety Lock On Each Post
- Cable Remote Control
- Powder Coat Finish
- 2x3 Tonne Jacking Bridges

## Dimension



## Specification

Capacity	6000kg	
Max. Lift Height	1735 mm	
Lowest Height	230 mm	
Size(mm)	3,616WX2,160HX7,335L	
Lifting Time	Main	49~53 sec.
	Jack	3~5 sec.
Lowering Time	Main	30~34 sec.
	Jack	26~30 sec.
Power & Motor	optional	Single 3HPx4Px220Vx60Hz
	standard	3phase 3HPx4Px220V/380Vx60Hz
Operation method	Control panel & wired remote control	



**INTEREQUIP**  
 INTEREQUIP PTY LTD.

[www.interequip.com.au](http://www.interequip.com.au)  
 E-mail: [info@interequip.com.au](mailto:info@interequip.com.au)  
 TEL: Australia 18000EQUIP (1800 037 847)