

# 800AJ

## ARTICULATING BOOM LIFT



### KEY SPECS

**Platform Height**  
24.38 m

**Horizontal Outreach**  
15.80 m

**Up and Over Height**  
9.78 m

**Platform Capacity**  
230 kg

### KEY FEATURES

- Delivers a zero calibration automatic load sensing system that eliminates the need to use external weights to calibrate the machine.
- Delivers unmatched maneuverability for fined work areas with a fuel-efficient Stage V engine.
- Backed by industry-leading, customer-first service and support.

### ACCESSORIES & OPTIONS

- 0.76 m x 1.20 m drop bar or swing gate platform
- 0.76 m x 1.53 m drop bar or swing gate platform
- 0.76 m x 1.83 m drop bar or swing gate platform
- 0.91 m x 2.44 m drop bar or swing gate platform
- 0.76 m x 0.91 m drop bar platform
- 13 mm air line to platform
- Four wheel steer/Two wheel steer/Crab steer \*\*\*
- 18 - 625 foam filled lug tread tires Non Marking
- 4000W 50Hz On-Board Generator
- Tow package
- All motion alarm
- Light package \*\*\*\*
- Platform worklights
- Head and tail lights
- Plugs & Sockets
- Hostile environment package \*\*\*\*\*
- Hydraulic oil cooler
- Skyguard with beacon
- Skyguard without beacon
- Platform steel console cover
- Synthetic Biodegradable Hydraulic Oil
- Soft Touch Proximity System for 1.83m platform
- Soft Touch Proximity System for 2.44 m platform

### STANDARD SPECIFICATIONS

#### Performance

Working Height	26.38 m
Platform Height	24.38 m
Horizontal Outreach	15.80 m
Working Outreach **	16.45 m
Up and Over Height	9.78 m
Swing	360° (Continuous)
Platform Capacity (Unrestricted)	230 kg
Platform Rotator (Hydraulic)	180°
Jib - Overall Length	1.83 m
Jib - Range of articulation	130° (+70°/-60°)
Machine weight *	15,757 kg
Maximum Ground Bearing Pressure	5.30 kg/cm <sup>2</sup>
Maximum Tyre Load	8054 kg
Drive Speed 4WD	5.8 km/h
Gradeability 2WD	30%
Gradeability 4WD	45%
Axle Oscillation	0.20 m
Turning Radius - Inside	3.81 m 2WS / 1.83 m 4WS
Turning Radius - Outside	6.02 m 2WS / 3.53 m 4WS

#### Power

Diesel Engine	Deutz TD 2.9 L4 (67 hp,50 kw) (DOC+DPF)
Fuel Tank Capacity	148 L

#### Tires

Tires	18 - 625 (Foam Filled)
-------	------------------------

#### Hydraulic System

Hydraulic Tank Capacity	151 L
Auxiliary Power	12V DC

\* Certain options or country standards may increase weight and/or dimensions  
\*\* Incl. 0.65 m outreach beyond platform

### STANDARD FEATURES

- 0.91 m x 1.83 m swing gate platform
- Multiple function operation
- Full proportional drive joystick control with integral thumb steer switch
- Full proportional main boom and swing joystick control
- Multiple speed control for lower boom, telescope and platform rotate
- Selectable creep speed on drive / lift and swing functions
- Platform console machine status light panel \*
- Load sensing system
- AC power cable to platform
- Deutz TD 2.9 L4 (50 kw) diesel engine - Stage V (DOC + DPF)
- Engine distress warning / shut down system \*\*
- Gull-wing turntable hoods
- Swing-out engine tray
- Spark arresting type muffler
- Control ADE® (Advanced Design Electronics) System
- Hydrostatic drive transmission
- Four wheel drive
- Two wheel steer
- Horn
- QuikStik® boom design
- 4 degree tilt alarm and indicator light
- 18 - 625 foam filled lug tread tires
- Oscillating front axle
- Lifting/tie down lugs
- Hour meter
- Ground control selector switch with key lock
- Flashing Amber Beacon
- Catalytic purifier muffler
- Skyline active system
- Platform tool tray
- 12V-DC auxiliary power
- Clearsky SMART FLEET connectivity module - Subscription through On Line Express

\* Provides indicator lights at platform control console for system distress, low fuel, tilt light, and foot switch status.

\*\* Low oil pressure and high coolant temperature alarms with shut-down enabled/disabled by analyser.

\*\*\* Only available with four wheel drive on models 600A and 600AJ with 2.49m wide chassis and 800A and 800AJ

\*\*\*\* Includes platform mounted work lights and head & tail lights.

\*\*\*\*\* Includes console cover, boom wipers and cylinder bellows.

# 800AJ

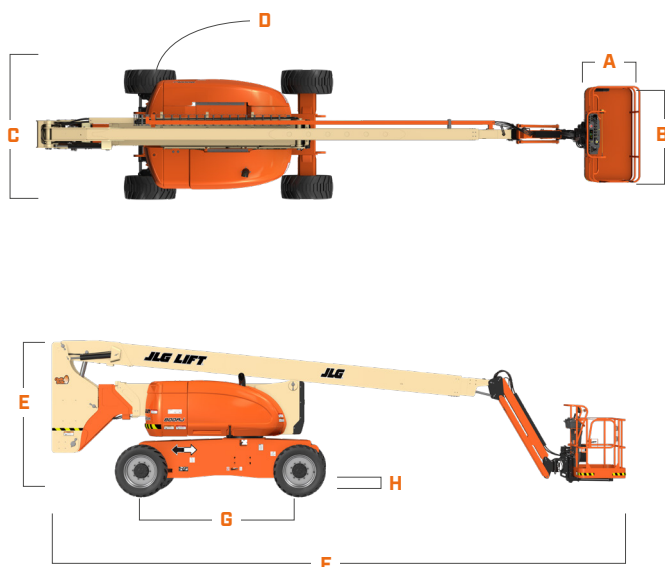
ARTICULATING BOOM LIFT

BOOM LIFT



## DIMENSIONS

All dimensions are approximate



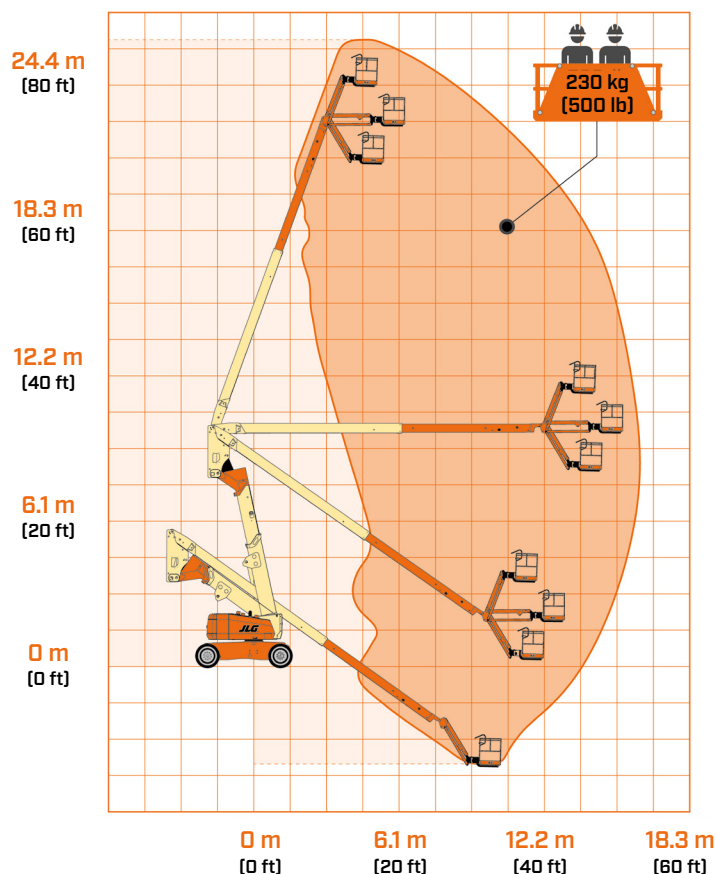
A.	Platform Width	0.91 m
B.	Platform Length	1.83 m
C.	Overall Width	2.48 m
D.	Tailswing (working condition)	0.76 m
E.	Stowed Height	3.00 m
F.	Stowed Length	11.13 m
G.	Wheelbase	3.06 m
H.	Ground Clearance	0.28 m

### IMPORTANT

JLG is continually researching and developing products and reserves the right to make modifications without prior notice. All data in this document is indicative. Certain options or country standards will increase weight. Specifications may change to meet country standards or with the addition of optional equipment.

Due to continuous product improvements, JLG Industries reserves the right to make specification and/or equipment changes without prior notification.

## REACH DIAGRAM



**JLG EMEA BV**  
Polaris Avenue 63  
2132 JH Hoofddorp  
The Netherlands  
Tel.: +31 (0)23 565 5665  
[www.jlg.com](http://www.jlg.com)

An Oshkosh Corporation Company