

Wireless Ultrasound Scanner

For bovine, equine, ovine scanning

STANDARD
2
YEAR WARRANTY

Technology Driven
2-Year Warranty



Black technology from China

Do More | Faster | Focused



Applications

BestScan® S9

Visit www.bmv.cc for more information
facebook.com/bmvtechnology | twitter.com/bmvtechnology



BMV
TECHNOLOGY

ADD: 4/F, BMV of Yinjin Building, Block 71, Baoan Centre District, Shenzhen 518010, P.R. China

Tel: +86-755-26564580

E-mail: sales@bmv.cc

Web: www.bmv.cc

BMV is first brand in the veterinary industry of China.

Set R&D, production, sales in one of the medical equipment manufacturers, service providers

BMV & BestScan® are registered trademarks or trademarks owned by BMV Technology Co., LTD.

©2008-2019 BMV Technology Co., Ltd. All rights reserved.

Specifications subject to changes without prior notice.

P/N: ENG-S9-BROCHURE-210285X1 0P-201906

BMV
TECHNOLOGY

The industry first dedicated AI-Powered wireless ultrasound for bovine/equine



128
Elements

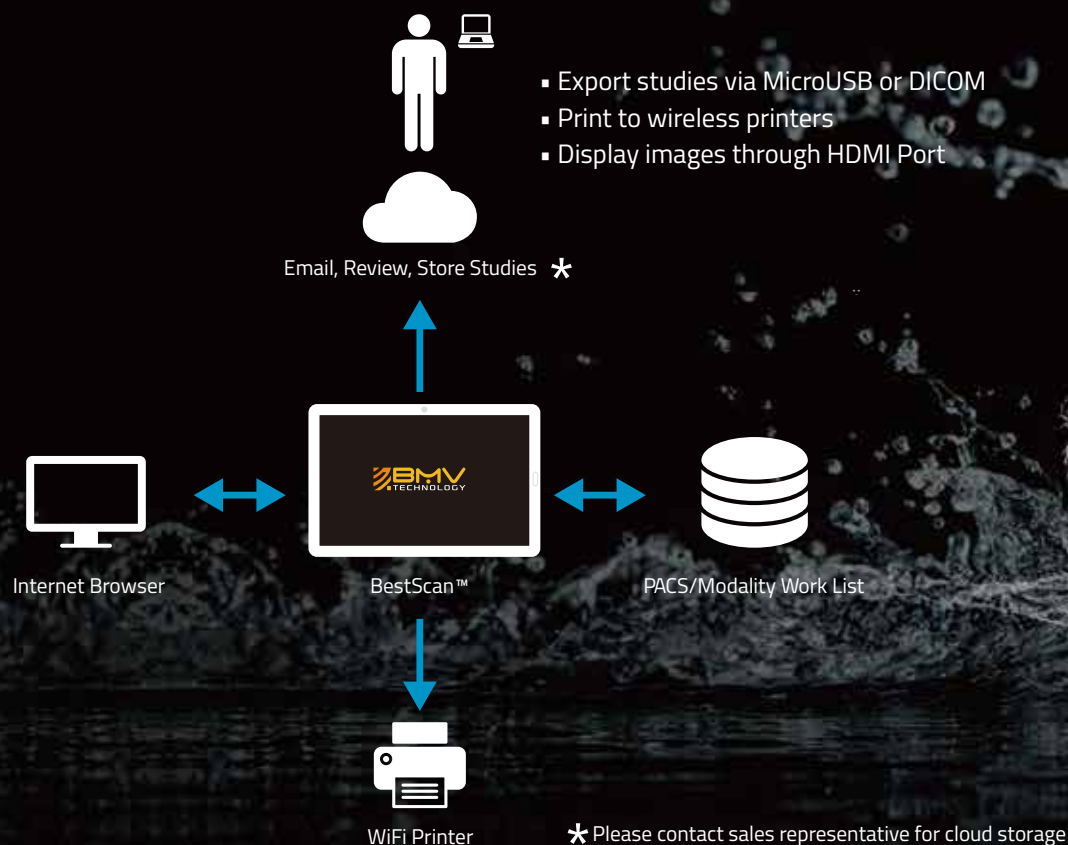
IP67
Waterproofing grade

12h
Battery life

650g
Extremely lightweight
body design

WIFI
Complete wireless
freedom

Connectivity, simplified



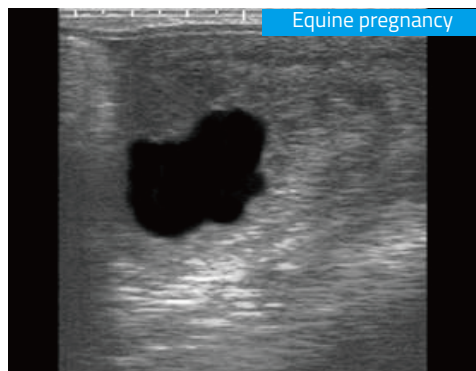
Do More | Faster | Focused



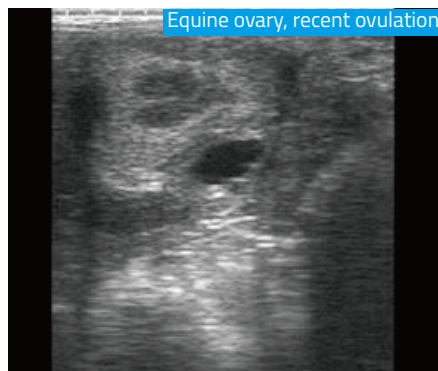
"1+X"
The new way of
training and education

BestScan® S9 is wireless ultrasound system with the exciting breakthrough in technology such as AI for better images, wireless freedom, works on popular smart device, specifically engineered for all aspects of bovine and equine reproductive imaging, as well as for equine tendon imaging.

Uncompromised clarity



Equine pregnancy



Equine ovary, recent ovulation



Bovine - calf head

Innovative ergonomic design in every details

- Wireless Freedom
- Works on Android, iOS and Windows
- Lithium battery power supply for 12 hours
- Record videos and save images on your smart devices
- High sensitivity transducers with AI for better images
- 128 elements, receiving on 32 channels, 26 frames per seconds
- Waterproof and dustproof performance



Design in line with
operator's habits



Wireless Charging



I-Scan®



Wireless charging dock



iOS device



Android device



Windows



Deeper penetration with curved probe technology

Faster

How to download the app?
The robust S9 app is available on compatible Android smart devices via scanning code to download or visit www.bmv.cc/app

App-based ultrasound
So simple and smart

Focused applications

in productivity imaging

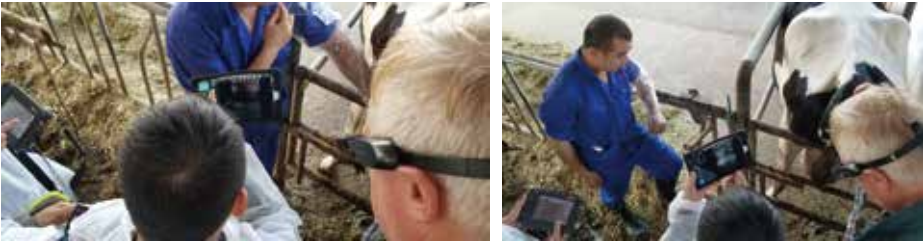
With intuitive design, ease of operation, incredible image quality, and a simplified intuitive workflow, the S9 provides diagnostic confidence for focused applications of bovine, equine pregnancy management on the field examinations, ensuring better productivity on the farm and improvement in animal health.



Step1: Prepare the system Step2: Scanning on farm Step3: Cleaning by water

[1] Early pregnancy diagnosis

From day 22 (after the insemination), the embryonic heartbeat can be detected. Day 22~30, the embryo body is in C-shaped type. Day 50~60, the sex of the fetus can be identified.



[2] Diagnosis of abnormal reproductive organs

Ovarian cysts are an important cause of infertility, as well as ovarian cysts and uterine abnormalities after treatment. Follicular puncture, ultrasound guided amniocentesis and urethroplasty, examination of the bull reproductive system

[3] Detection of normal ovarian development in cattle

The bovine follicles were identified and measured, and ultrasound scans of the ovary of the cow before and after estrus were performed to determine ovulation and the presence of the corpus luteum.



Special Designed for Equine

S9 is a flexible imaging technique that can be used to visualize soft tissues such as limb tendons, eyes, abdominal and thoracic organs. S10's Color flow Doppler echocardiography is also available for cardiac assessment.

- Orthopaedics exams
- Guided injections – abdominal exams
- Back and vertebral examinations
- Reproduction diagnosis
- Stallion genital tract
- Foetal gender



i-Scan® smart glasses

- Wireless,smart,do more.
- OLED 1080p HD display
- 32GB storage
- 2.0 GHZ QUAD code CPU
- Approximately 12-hour diagnoses powered by power bank

※ Advantage and how-to use, you can visit www.bmv-vet.com/en/smart-i-scan



Dedicated accessories

A wide range of dedicated accessories is available for this system, such as viewing options such as Android, iOS phone/tablet and goggles, and optional accessories such as wireless charger, IFR introducer, chest mount, wrist mount, and so on.

	I-scan smart goggle Customized Binocular Type HD Wearable Video Glasses		Field working bag Storage the probe and its accessories
	Rectal Probe Introducer Rounded 85cm,eases your shoulder and arm strain for Fetal Aging,Pregnancy Testing		Ipad with S9 software installed Use as a viewing device (manufactured by Apple Inc)
	Chest Mount for Tablet To be used in conjunc- tion with your choice of tablet		Power bank 10000mAh, 147x71.2x14.2mm, supply power for goggle
	Wrist Mount for phone To be used in conjunc- tion with your choice of Phone		Mobile Car Charger Battery Charging in the car

S9 system bundle, your dedicated solution

Acquiring S9 is simplified by purchasing a bundle with a unit price for all that's needed to put S9 to work in your environment. The package includes:

1. S9 system with probe
2. APP software
3. 8 inch Tablet or I-Scan™
4. Customized tablet case
5. AC Adapter for system
6. Customized carry case
7. Rectal Probe Introducer
8. 2-year warranty

Specifications:

Dust and splash proof	Yes
Image storage	Yes
Viewing device	Smartphone / Tablet/ I-Scan® Goggles. S9 Scanner wireless link to compatible viewing device
Probe	
Probe specification	Broadband rectal linear array transducer, active array length 64mm, 128 crystal array Broadband rectal curved array transducer, 128 crystal array
Power	
Charging options	Battery can be charged from wireless charger, DC power adapter or car 12v accessory socket
Battery life	Li-ion battery gives 12h runtime
Battery charge time	5.5h - only use BMV approved battery charger and DC power adapter
Dimensions and weight	
Size	185 x 80 x 35 mm
Weight	650g
Warranty	24 months

S9RL	B/W, Rectal linear probe, 5.0-8.5 MHz
S9RC	B/W, Rectal curve probe, 3.0-5.0MHz, wide field of view and deeper penetration

Download the app, connect, scan, and share images from your compatible Android device. Easy to get started. With three simple steps you're ready to go.



Download **1**
the S9 app to
your Android device.*



Connect **2**
the S9 system
to your compatible
Android device by wifi.



Scan **3**
with the exceptional
quality of BMV imaging
technology.