



APS TECHNOLOGY AUSTRALIA

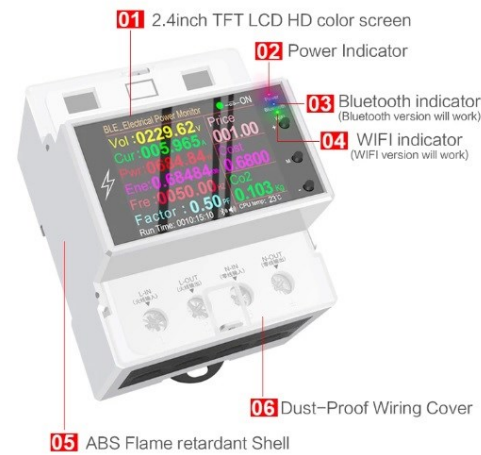
*Smart Tech for energy
consumption and
monitoring.*

**APS TECHNOLOGY
AUSTRALIA PTY. LTD**

U 206/24 CARLINGFORD RD
EPPING, 2121
NSW, AUSTRALIA

Phone: +61-04-8191-2826
E-mail: INFO@APS-
TECHNOLOGY.COM.AU

SINGLE PHASE WATT METER WITH REMOTE MONITORING

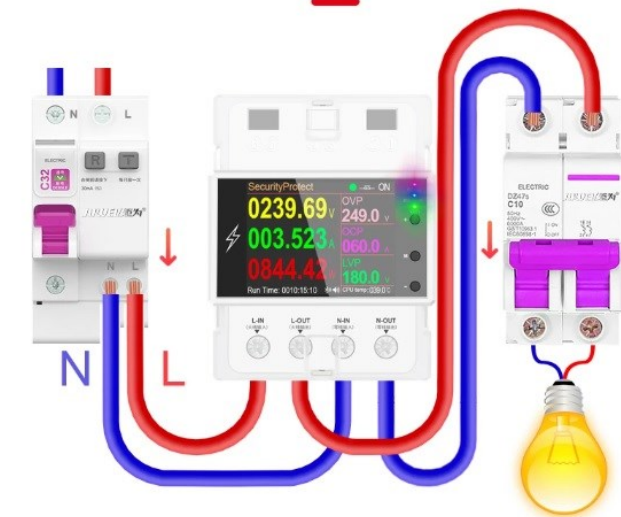


APPLICATIONS

This watt meter can be used in various applications. For example in an industrial setting, where single phase power is used to power the device, its easy to monitor the he power consumptions using the wiring diagrams.

PRODUCT WIRING DIAGRAM

SIMPLE DESIGN, EASY INSTALLATION AND EASY OPERATION



Designed and developed by APS Technology Australia.
Specification subject to change without notice.

RAIL MOUNTING

It is installed on a universal 35mm standard rail, no screws are required, and the installation is convenient and convenient.

Note: This version of the WiFi light will not display



FULL VIEWING ANGLE COLOR TFP 2.4" SCREEN

180° WIDE VIEWING ANGLE, BIG AND EYE-CATCHING

Note: This version of the WiFi light will not display



AT4PB Bluetooth rail meter AC85-265V/0-100A



Remote Monitoring of electrical parameters.

Monitoring of the fundamental electrical parameters such as current (I), voltage (V), electrical power (W) and electrical energy for any electrical appliance is critical due to the escalating prices energy production.

Whether the appliance is situated in a home or industrial setting, by measuring the quantities, its possible to monitor the energy consumption and thus make saving on the energy bill.

The new Bluetooth/Wi-Fi Meter allows you to measure and transmit these electrical parameters quantities to the user. By installing the App on Android or iOS enables a continuous monitoring.

SPECIFICATIONS

- Model: AT4PB-Bluetooth/Wi-Fi
- Voltage: AC 85-265 (V)
- Basic current: 10A
- Power range: Max 26.5 KW
- Energy Measurement range: 0 ~ 99999 kWh
- Accuracy: +1%
- Frequency: 50/60 (Hz)
- Power factor: 0-1.00 PF
- Power consuming: < 0.3W
- Display: voltage, current, real-time power consumption, total power
- Ambient temperature: -20°C ~ +60°C
- Screen Type: 2.4inch TFT-LCD HD Display
- Panel Graphic 240'RGB'320 Dot-matrix
- Product size: 97x76x76mm
- Rail Mounting Dimensions: 35mm
- monitoring large display

FEATURES

- *Over current Protection
- *Over voltage protection
- *Under voltage protection
- *Set the electricity unit price function/accumulate electricity bills
- *Screen rotation and screen

Designed and developed by APS Technology Australia.
Specification subject to change without notice.