

HEAT AND ILLUMINATION ASSEMBLIES



Roband Lamp Assemblies

Designed and manufactured in Australia, the range of Roband Lamp Assemblies are a stylish and essential tool for keeping prepared food at the required serving temperature before the meal is delivered to the patron.

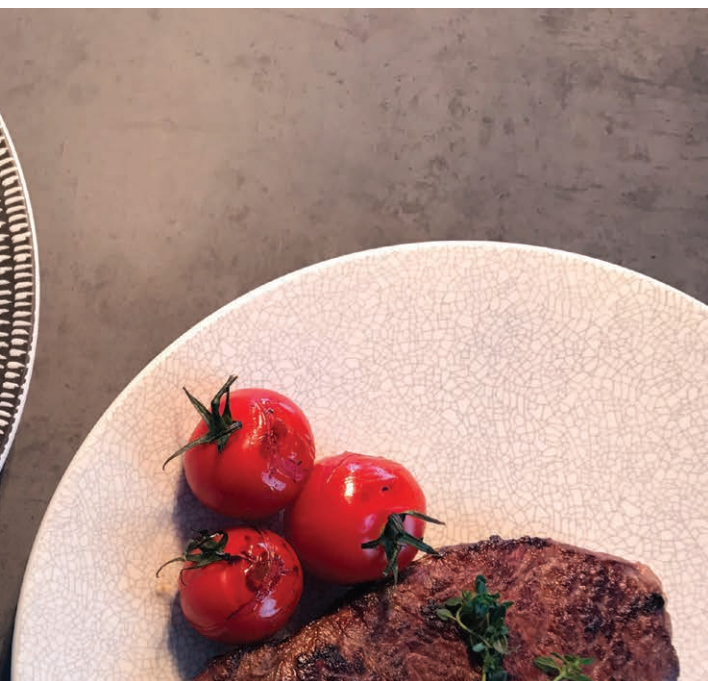
The Roband range includes:

- Quartz Heat Lamps provide a combination of heat and light and are generally used in pass-through areas;
- Infra-red Heating Assemblies utilise infra-red to provide variable, efficient heat and are used in the kitchen back-of house where heat but no illumination of the food is required;
- Fluorescent Lighting Assemblies provide light and match the styling of the Heat Lamps and Heating Assemblies.

The range extends from standard models through to fabricator models. Standard models include control switches incorporated into the lamp body with a plug and cord arrangement so that the units can easily be installed and operated without an electrician's involvement. The fabricator models exclude all switches and controls and are supplied with PTFE wiring that allows an electrician or fabricator to install the units and connect the assembly wires into the kitchen's own wiring and switch arrangement.

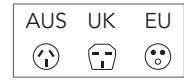
Roband quartz, infra-red and fluorescent lamp assemblies are manufactured from an exclusive extruded anodized aluminium section, specifically designed to breathe. Available in a variety of sizes, the Roband Lamp Assemblies will suit a wide range of applications.

All Roband Lamp Assemblies are designed to run at 230V 50Hz.



Standard Models - for Quartz, Infra-red heating & Fluorescent units

The standard heat lamp assemblies (e.g. HQ900E, HE900 & HF900) come with a control box that houses the isolating on/off switch. They also feature a simple mounting system and come complete with a 10 Amp plug and cord. Optional mount kit available.

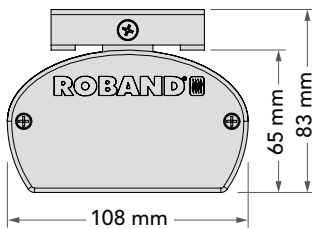


Fabricator Models - available for Quartz & Infra-red units

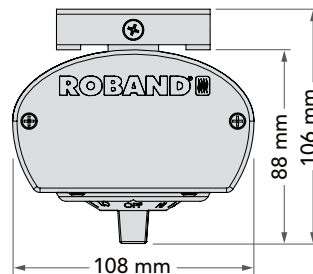
The heat lamp assemblies are also available without the control box and on/off switch (e.g. HUQ825E & HUE825) so they can be connected to a remote switch setup. The removal of the control box shortens the length of the lamp assembly accordingly. The optional mount kit (the round tubes pictured right) is ideal for installation.



Dimensions - Standard Models & Fabricator Models



Dimensions for standard quartz lamp, fluorescent lighting and fabricator infra-red heating assemblies (HQ, HUQ, HF & HUE). The mount bracket is removable.



Dimensions for standard infra-red heating assemblies (HE). The mount bracket is removable.

Optional Accessory

Mount Kit

Mount kit for Quartz and Infra-red series assemblies. The kit includes 2 x 19 mm diameter round tubes, inserts and mounting brackets, with instructions for installation by an electrician. 600 mm tubes can be cut to the desired length once on-site.



HM600 pictured



MODEL	DESCRIPTION	MOUNT TYPE	LENGTH mm
HM600	Mount kit for all Quartz lamps and Infra-red heat assemblies	Round	600

Quartz Heat Lamp Assemblies

Designed by Roband Australia, easy fit globes feature a protective quartz glass outer layer that encapsulates the inner globe allowing for safe handling. This secondary layer of glass also protects food from globe breakages by capturing the shards and eliminating the need for a traditional glass window in the base of the cover. Lamp replacement can now be performed without the need for an electrician and takes only seconds. The stylish and functional Roband quartz heat lamp assemblies provide a balance of heat and light to front or back of house applications. They are manufactured from exclusive extruded anodised aluminium, with a number of different sizes and options available to suit various requirements. All models come with a standard mount bracket. Optional mount kit is also available.



Showing wire guard open for easy replacement of the globe

Specifications - Standard Models (Includes Control Box)

MODEL	INTERNAL LAMPS	MOUNT TYPE	POWER Watts	LENGTH mm	LAMP CENTRES*	INCLUSIONS
HQ450E	1 lamp	Standard	350	450	N/A	Switch, plug & cord
HQ900E	2 lamps	Standard	700	900	400*	Switch, plug & cord
HQ1200E	3 lamps	Standard	1050	1200	345*	Switch, plug & cord
HQ1500E	4 lamps	Standard	1400	1500	345*	Switch, plug & cord
HQ1800E	4 lamps	Standard	1400	1800	400*	Switch, plug & cord
HQ2100E	5 lamps	Standard	1750	2100	400*	Switch, plug & cord

*Length between centres of each lamp. 230V 50Hz.



HQ1200E pictured

Specifications - Fabricator Models (No Control Box)

MODEL	INTERNAL LAMPS	MOUNT TYPE	POWER Watts	LENGTH mm	LAMP CENTRES*	INCLUSIONS
COMPLETE WITH A, N & E WIRE IN PTFE 1700 MM LENGTH FOR INSTALLATION TO YOUR OWN CONTROLLER						
HUQ375E	1 lamp	Standard	350	375	N/A	N/A
HUQ825E	2 lamps	Standard	700	825	400*	N/A
HUQ1125E	3 lamps	Standard	1050	1125	345*	N/A
HUQ1425E	4 lamps	Standard	1400	1425	345*	N/A
HUQ1725E	4 lamps	Standard	1400	1725	400*	N/A
HUQ2025E	5 lamps	Standard	1750	2025	400*	N/A

*Length between centres of each lamp. 230V 50Hz.



HUQ1125E pictured

Infra-Red Heating Assemblies

Roband infra-red heating assemblies are manufactured from an exclusive extruded anodized aluminium section, specifically designed to breathe. These units are designed for use at either front or back of house where more heat and no light is required. The heat is provided by a stainless steel element and an energy regulator is used on the standard units to precisely control the output, emitting a very even heat over the length of the warming area. All models come with a standard mount bracket. Optional mount kit is also available.



A variable control energy regulator is used to precisely control the output on standard models

Specifications - Standard Models (Includes Control Box)

MODEL	DESCRIPTION	MOUNT TYPE	POWER Watts	LENGTH mm	INCLUSIONS
HE900	1 element	Standard	900	900	Energy regulator, plug & cord
HE1200	1 element	Standard	1200	1200	Energy regulator, plug & cord
HE1500	1 element	Standard	1500	1500	Energy regulator, plug & cord
HE1800	1 element	Standard	1800	1800	Energy regulator, plug & cord

230V 50Hz.



HE1200 pictured

Specifications - Fabricator Models (No Control Box)

MODEL	DESCRIPTION	MOUNT TYPE	POWER Watts	LENGTH mm	INCLUSIONS
COMPLETE WITH A, N & E WIRE IN PTFE 1700 MM LENGTH FOR INSTALLATION TO YOUR OWN CONTROLLER					
HUE825	1 element	Standard	900	825	N/A
HUE1125	1 element	Standard	1200	1125	N/A
HUE1425	1 element	Standard	1500	1425	N/A
HUE1725	1 element	Standard	1800	1725	N/A

230V 50Hz.



HUE1125 pictured

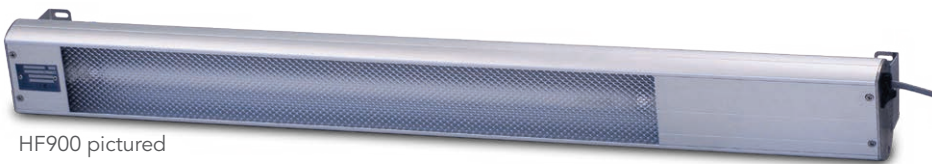
Fluorescent Lighting Assemblies

Roband fluorescent lamp assembly profiles match the aluminium extrusion from which the quartz lamp and infra-red assemblies are manufactured.

Specifically designed for use in refrigerated or ambient displays or where illumination is required without heat, these units have a diffused perspex cover over the light. They also feature a simple mounting system and come complete with an isolating switch and a plug and cord.

Specifications - Standard Models (Includes Control Box)

MODEL	DESCRIPTION	MOUNT TYPE	POWER Watts	LENGTH mm
HF900	1 fluorescent globe	Standard	30	900
HF1500	1 fluorescent globe	Standard	45	1500



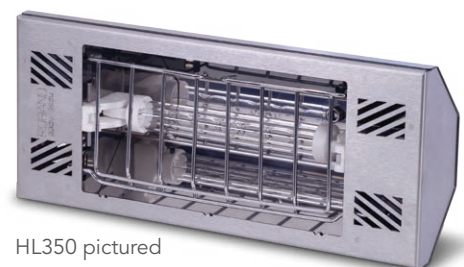
HF900 pictured

Modular Heat Lamp

The HL350 is a compact modular designed heat lamp manufactured from stainless steel, incorporating an easy fit 230 volt, 350 watt globe. The easy fit globes feature a protective quartz glass outer layer that encapsulates the inner globe allowing for safe handling. It is designed for use in custom fabricated installations as a modular component to be wired in parallel.

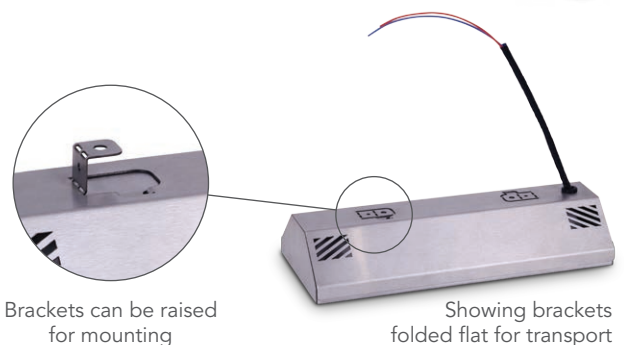
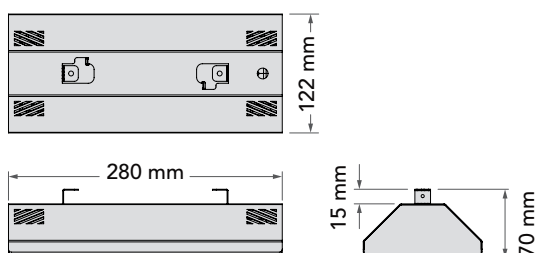
Specifications

MODEL	DESCRIPTION	VOLTS	POWER Watts
COMPLETE WITH 300 MM PTFE FLYING LEADS (A + N) FOR INSTALLATION			
HL350	Modular lamp, single globe	230	350



HL350 pictured

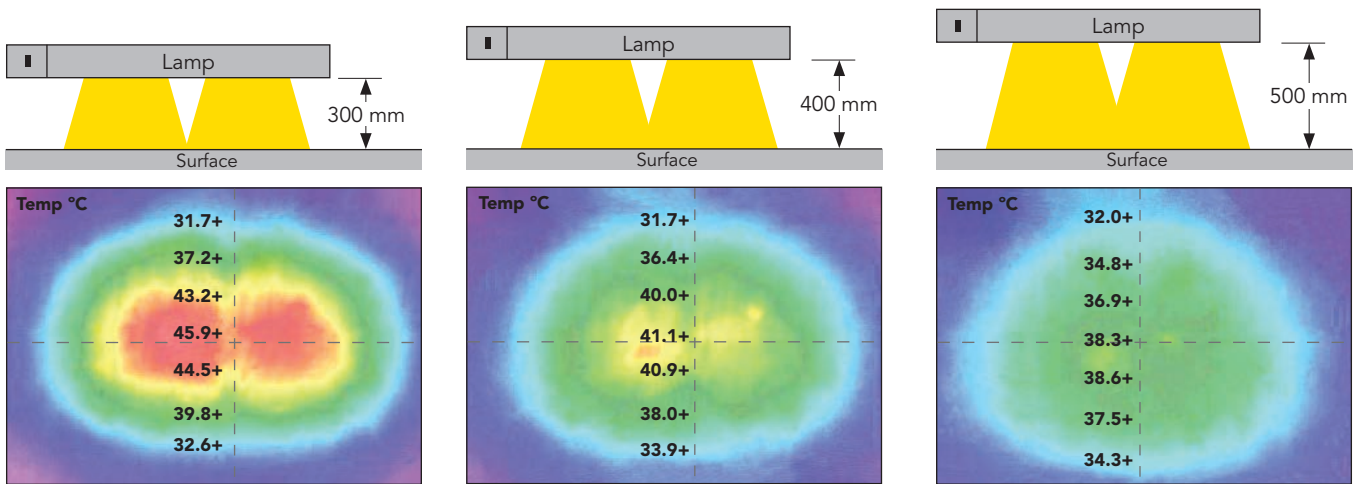
Dimensions



Heat Specifications

The lamp and heating assemblies are designed to delay the loss of heat from the prepared food while waiting to be taken to the table. The thermal images below provide a guide as to heat projection when mounted at various heights. Note these units are not designed to bring food up to serving temperature.

Quartz Heat Lamp - surface temperature from projected heat - HQ900E*

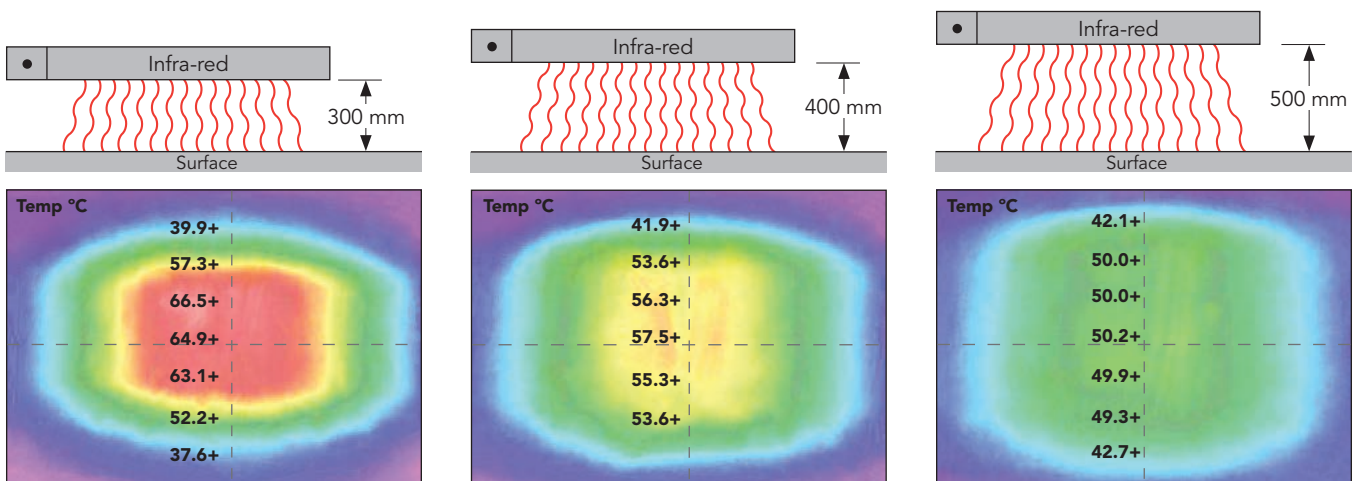


Thermal image depicting temperatures in degrees Celsius when HQ900E lamp positioned 300 mm above surface.

Thermal image depicting temperatures in degrees Celsius when HQ900E lamp positioned 400 mm above surface.

Thermal image depicting temperatures in degrees Celsius when HQ900E lamp positioned 500 mm above surface.

Infra-Red Heat Assemblies - surface temperature from projected heat - HE900*



Thermal image depicting temperatures in degrees Celsius when HE900 lamp positioned 300 mm above surface.

Thermal image depicting temperatures in degrees Celsius when HE900 lamp positioned 400 mm above surface.

Thermal image depicting temperatures in degrees Celsius when HE900 lamp positioned 500 mm above surface.

*These results were recorded in our factory under test conditions at 23°C. Temperatures were recorded on a timber surface. Variations to these temperatures will occur in different ambient conditions and with different food types.



Roband Australia Pty Ltd

1 Inman Road,
Cromer, NSW 2099
Australia
Tel: +61 2 9971 1788
Fax: +61 2 9971 1336
Email: sales@roband.com.au

Roband (Europe) Ltd

Haygarth Park, Blaenau Ffestiniog
Gwynedd, North Wales
LL41 3PF, UK
Tel: +44 (0) 1766 830 456
Email: info@robandeuropa.com

Roband New Zealand Ltd

Greenmount Drive,
East Tamaki,
New Zealand
Tel: +64 9 274 1355
Fax: +64 9 274 1356
Email: roband@roband.co.nz

All Roband Lamp & Heat Assemblies are designed to run at 230V 50Hz.

All dimensions are nominal only. All information contained in this brochure should serve as a guide only and is subject to change without notice due to constant research and development.

Images © 2017 Roband Australia.

© 2017 Roband Australia Pty. Ltd. ACN 003 049 063 ABN 34 864 327 105

® is a registered trademark of Roband Australia Pty. Ltd.

Distributor: