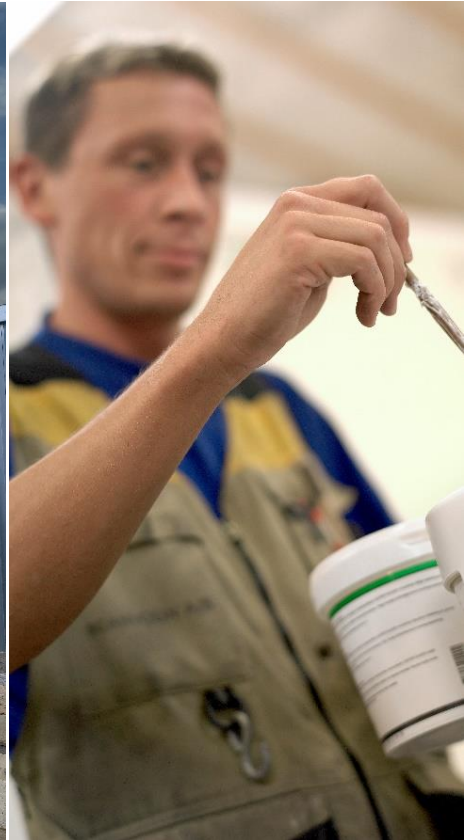




scanvogn
Restroom Trailers



A2B
TRAILERS PTY LTD

1800 (435 628) IFLOAT
A2BTrailers.com.au

ACN: 609 680 668

Location



- Situated in Denmark
- Sales organization in: Denmark, Norway, Sweden, Germany, Netherlands & Australia.
- Established 1995
- Contact persons:

Eamon Corless

www.A2Btrailers.com.au

**1, 2-6 Bonnal Road,
Erina, 2250 NSW**

02 43670026

sales@a2btrailers.com.au

scanvogn

Factory



- 9.000 M² Buildings
- 9.000 m² Hard stand
- Up to 3.500 units/a capacity



scanvogn

Why SCANVOGN?

- Contractors can provide welfare on wheels for there employees.
- Site facility rules & regulations are complied with in ONE mobile package.
- Easy handling, transportation and deployment. You only need an SUV.
- Danish Quality design.
- Broad product range with custom design on request.
- Streamlined production to provide good quality at low cost.
- Tired of the backslash? We provide flush toilets.
- At large events, people spend more and more money on tickets and demands better facilities.

LEADERS IN MOBILE FACILITIES

Scanvogn mobile systems have been utilized in some of Australia's and Europes harshest environments, and provide comfortable and secure facilities to people working in remote areas, or areas where there is a lack of services.

Scanvogn has over 30 years experience in mobile facilities. Our units come with features such as:

- Fibreglass wall and roof panels, which provide cool conditions in the heat, and can provide warmth in the cooler months.
- Full galvanised chassis, which have been proven to withstand Australia's off-road conditions.
- Built in tanks where required, to make the unit self-sufficient for long periods of time.
- Fittings & components that are of European standard.
- All components utilized in the structure of the systems are fibreglass, aluminium, galvanized and stainless steel, to ensure that the units withstand the test of time.

Scanvogn provide units to a number of industries, such as Mining, Gas and the Construction industry, and also service the Domestic and Event markets. Scanvogn offer a large range of designs, or can custom build to the client's



- Danish Quality
- Easy Handling
- Low Weight
- Custom Design
- Low Cost
- Water saving
- Flexible Solutions

scanvogn

SCANVOGN – Some Scanvogn Features

A glimps of scanvogn features.

The scanvogn advantage

- Gutter system Integrated in molded fiberglass roof.
- LED throughout.
- Overrun brakes up to 3.5tonne.
- Wall mounted Aircon with reverse cycle.
- Turn/Tilt windows.
- Hot dip galvanized chassis.
- Collapsible steps for easy deployment.



- Danish Quality
- Easy Handling
- Low Weight
- Custom Design
- Low Cost
- Water saving
- Flexible Solutions

SCANVOGN – Some Scanvogn Features

A glimps of scanvogn features.

- All materials are highly durable and easy to clean.
- Little or no organic materials used.

Hot dip galvanized Chassis



Scanvogn only allows the highest standards in corrosion protection. All our lightweight trailers are delivered with hot dip galvanized chassis. The galvanizing process is performed on all the parts AFTER they are machined and gut which means that all edges and bolt holes are galvanized. There are products on the market where the galvanizing happens after machining which result in the exposed edges and thus corrosion and shorter life. Scanvogn has examples of 25-year old trailers without corrosion.

Molded Fiberglass Roof



All Scanvogn trailers comes with molded fiberglass roof. This ensures a sealed trailer in all weather conditions and significantly increases product lifetime. Scanvogn has, in the last 15 years not had a single complaint of leaking roofs. The roof has a curvature which offer maximum strength combined with low weight and has an integrated gutter system to drain water away to the corners.

Jets Vacuum Toilet System



JETS vacuum systems is really made to please. It ONLY uses 0.4L of water with every flush and has an integrated heavy-duty macerator ensuring a reliable sanitary system. In these units, a push and hold system is used which means less electronics thus less parts that can fail. Integrated in the system is a, 230L wastewater tank and a 150L fresh water tank with a tank monitor system. We use the easy clean Charm version specially developed by JETS.

Mini Kitchen



All models can be supplied with a mini-kitchen.

The countertop is, **like all other table tops**, made out of 12 mm compact laminate with stainless steel sink.

The high-end material choice provides a durable and abrasive resistant surface together with a clean minimalistic look.

scanvogn

Products – Light weight innovation on wheels



- Accommodation units
- Site facilities
 - Sanitary units
 - Large Event & Special solutions
 - Emergency camps
 - Australian Outback
- All Units Below 3.500kg



scanvogn

SCANVOGN – Logistics



- Models 2,40m, 4,20m, 3,20m & 5,70m fits in a ISO container.
- All models can be towed behind SUV-like cars.
- All models are below 3500kg
- Models up to 320 is below 1000kg.
- 420 is below 1500kg
- 570 is below 2000kg.
- *weights are depended on equipment and outfitting.



scanvogn

SCANVOGN – Brand your company

Bring your business to the client.



- All Scanvogn models provides large white surfaces for your companies advertising and logos.
- With Scanvogn we provide you with the flexibility you need to take your business directly to the client.



scanvogn

Products – Complete sanitary systems from low to very high volume.

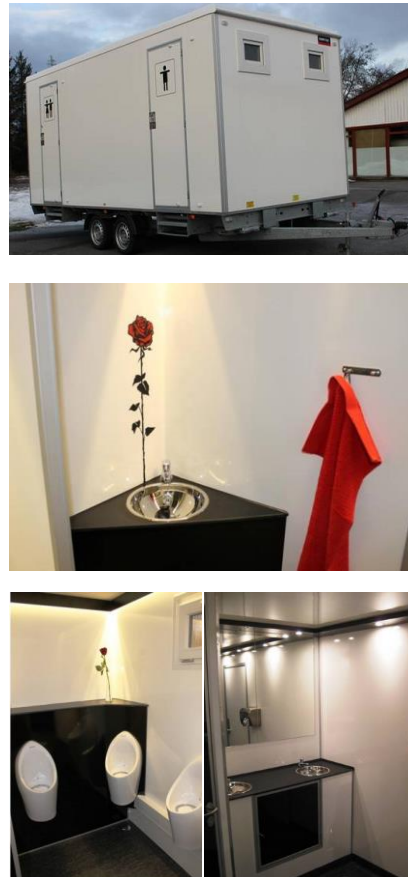
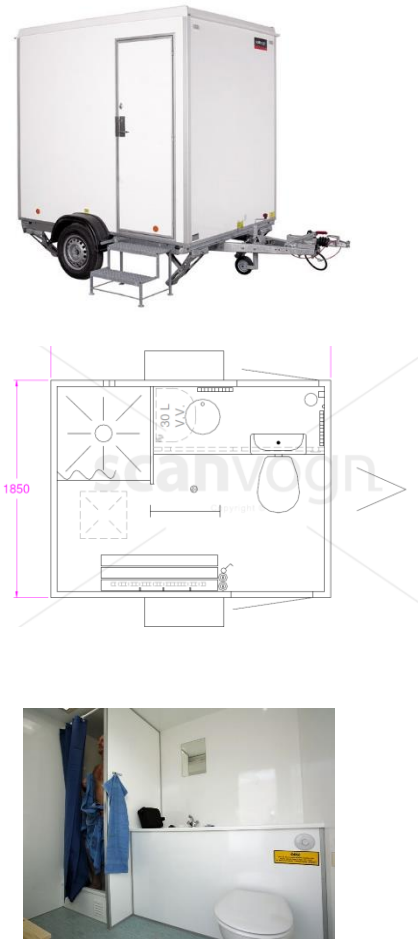
Low Capacity

Temporary Toilet & Shower

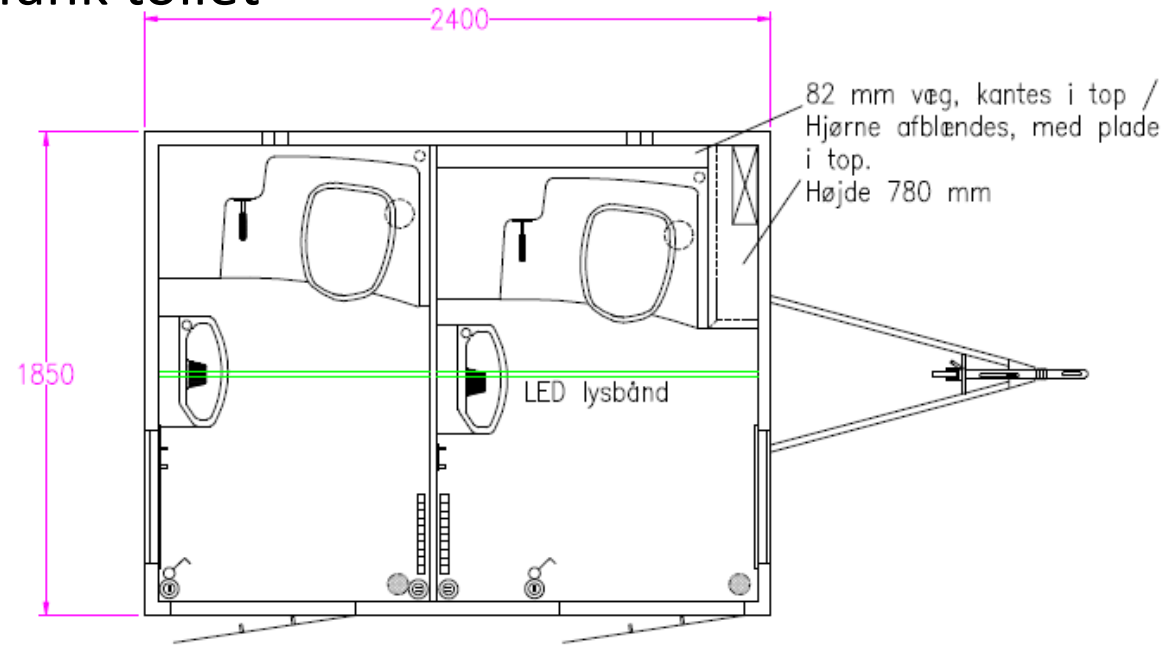
VIP or Backstage

To HIGH volume water
Saving vacuum systems

- Accommodation units
- Site facilities
- Sanitary units
- Large Event & Special solutions
- Emergency camps
- Australian Outback
- All Units Below 3.500kg



SCANVOGN – 240 Double Tank toilet



○ Price [REDACTED]

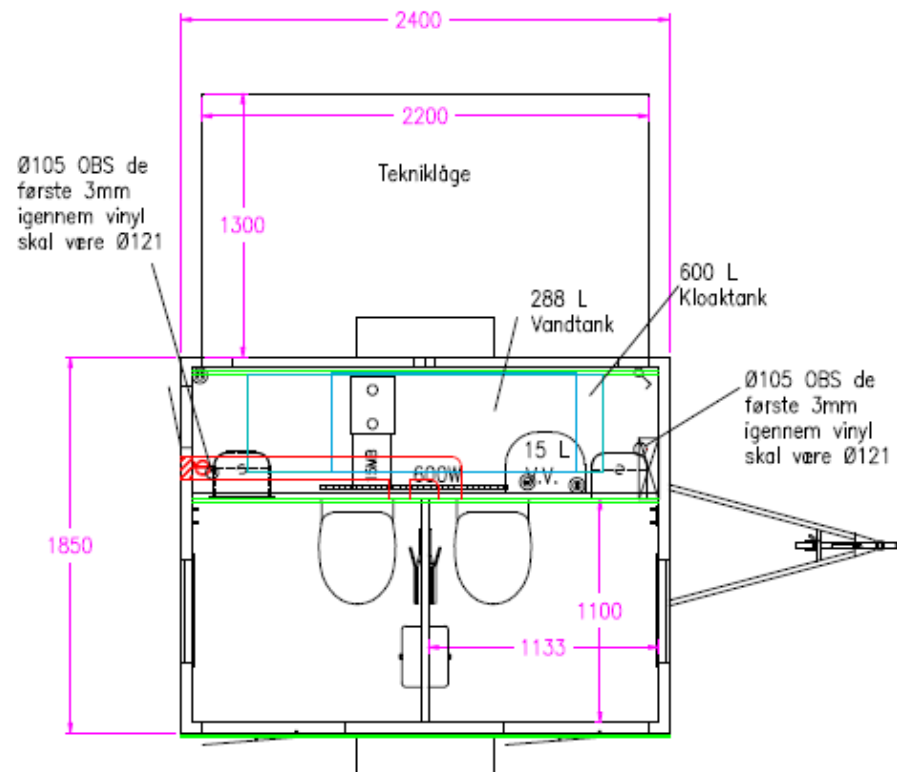
Price includes;

- Overrun/Surge Brake system
- Hot dip galvanized chassis
- LED lights throughout
- Full composite body
- Hot dip galvanized chassis
- Molded Fiberglass Roof
- 2 Off rotomolded tank toilets.
- 2 Off rotomolded hand wash basin unit.
- 2 Off thermal turn/tilt windows.



scanvogn

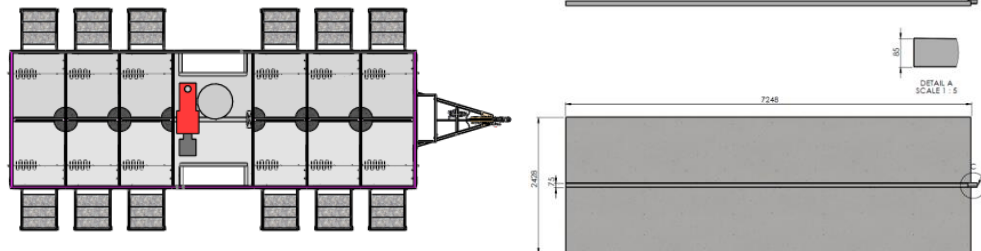
SCANVOGN – 240 Double vacuum



- Price
- Price includes;
- Overrun/Surge Brake system
- Hot dip galvanized chassis
- LED lights throughout
- Full composite body
- Hot dip galvanized chassis
- Molded Fiberglass Roof
- 2 Off JETS vacuum toilet c/w tanks and sensors.
- 2 Off in wall hand wash basin with LED mood lighting.
- 2 Off thermal turn/tilt windows.
- 15 L Hot water tank.

scanvogn

SCANVOGN – Shower unit

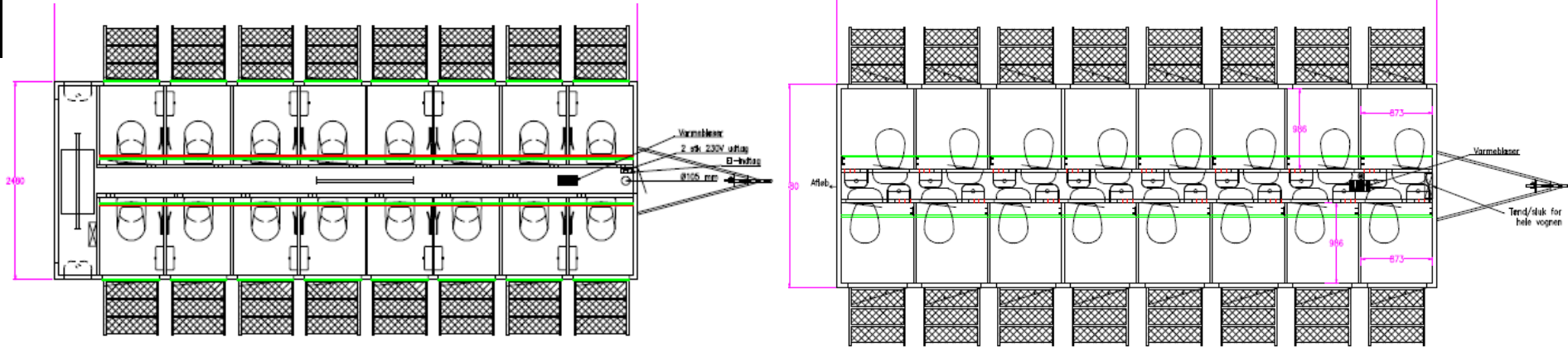


- 12 Shower rooms in one unit.
- Floor in slip resistant fiberglass.
- Floor curves to center drain.
- Water is collected in front in a accumulator with pump.
- Roof ventilation.



scanvogn

SCANVOGN – Large event solutions



- Price c/w JETS Vacuum system
- Price Water flush

Price includes;

- Overrun/Surge Brake system
- Hot dip galvanized chassis
- LED lights throughout
- Full composite body
- Hot dip galvanized chassis
- Molded Fiberglass Roof
- 16 Off flush toilets
- 16 Off hand wash basins.



scanvogn

SCANVOGN – LunchBOX Series 320 model

Description:

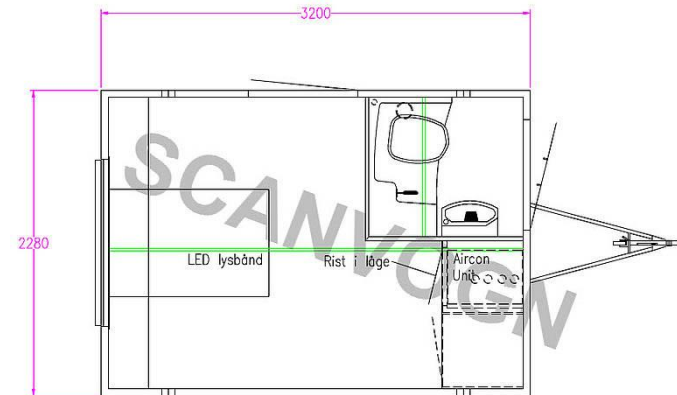
This compact 3.2m unit has a number of applications. Most commonly used as a lunchroom with separate toilet facilities, it can also be used as an office or as a one bedroom unit. The unit is fitted with A/C and LED lighting throughout, with room to incorporate a fridge and other appliances. This unit comes standard with the following:

- Plug and play
- Portable Genset
- Tank Toilet system
- A/C system
- LED Lighting throughout
- Workstation (2 person)
- Hand basin with built in water tank

Scanvogn can provide appliances (fridges, microwaves) if required.

Dimensions:

Length (cabin)	- 3.2 metres
Length (overall)	- 4.9 metres
Width	- 2.4 metres
Height	- 2.9 metres
Weight	- 1 tonne



Price

Price includes;

- Overrun/Surge Brake system
- Hot dip galvanized chassis
- LED lights throughout
- Full composite body
- Hot dip galvanized chassis
- Molded Fiberglass Roof
- 1 Off rotor molded tank toilets.
- 1 Off rotor molded hand wash basin unit.
- 1 Off double glazing turn/tilt windows.



scanvogn

SCANVOGN – LunchBOX Series 420 model

Description:

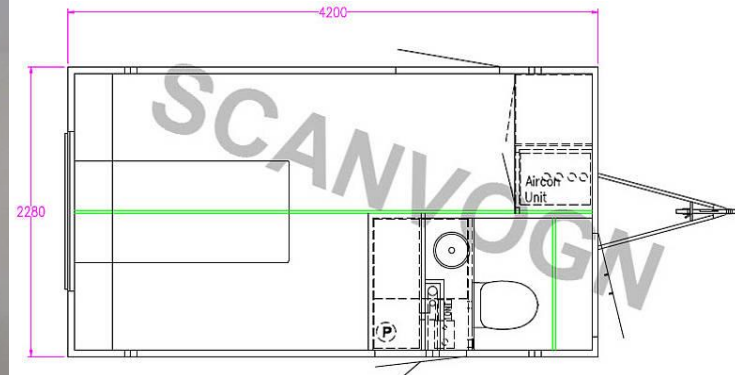
Scanvogn understands that in today's economy it is important to keep costs to a minimum. The 4.2m Lunchbox with a JETS system was designed with this in mind. The unit comes fitted with a potable water tank and a waste water tank. The JET system uses 95% less water than a conventional toilet, enabling the 4.2m unit to be self sufficient for long periods of time, which will reduce the amount of visits required from service vehicles in maintaining water and waste levels. This unit comes standard with the following:

- Plug and play
- Portable Genset
- JET toilet system
- LED Lighting throughout
- A/C system
- 2 tanks – Potable water, Waste water
- Hand basin
- Workstation (4 person)

Scanvogn can provide appliances (fridges, microwaves) if required.

Dimensions:

Length (cabin)	- 4.2 metres
Length (overall)	- 5.9 metres
Width	- 2.4 metres
Height	- 2.9 metres
Weight	- 1.5 tonne



○ Price

Price includes;

- Overrun/Surge Brake system
- Hot dip galvanized chassis
- LED lights throughout
- Full composite body
- Hot dip galvanized chassis
- Molded Fiberglass Roof
- 1 Off JETS vacuum toilet c/w tanks and sensors.
- 1 Off Steel hand wash basin unit.
- 1 Off double glazing turn/tilt windows.

scanvogn

Products – Easy employment at large events



Work Station



Airport Security



Media Coverage



Cooling



Sales Solutions



Medic



Wheel Chair Friendly

- Accommodation units
- Site facilities
- Sanitary units
- Large Events & Special solutions
- Emergency camps
- Australian Outback
- All Units Below 3.500kg

Products – Heavy Duty in a Light Package

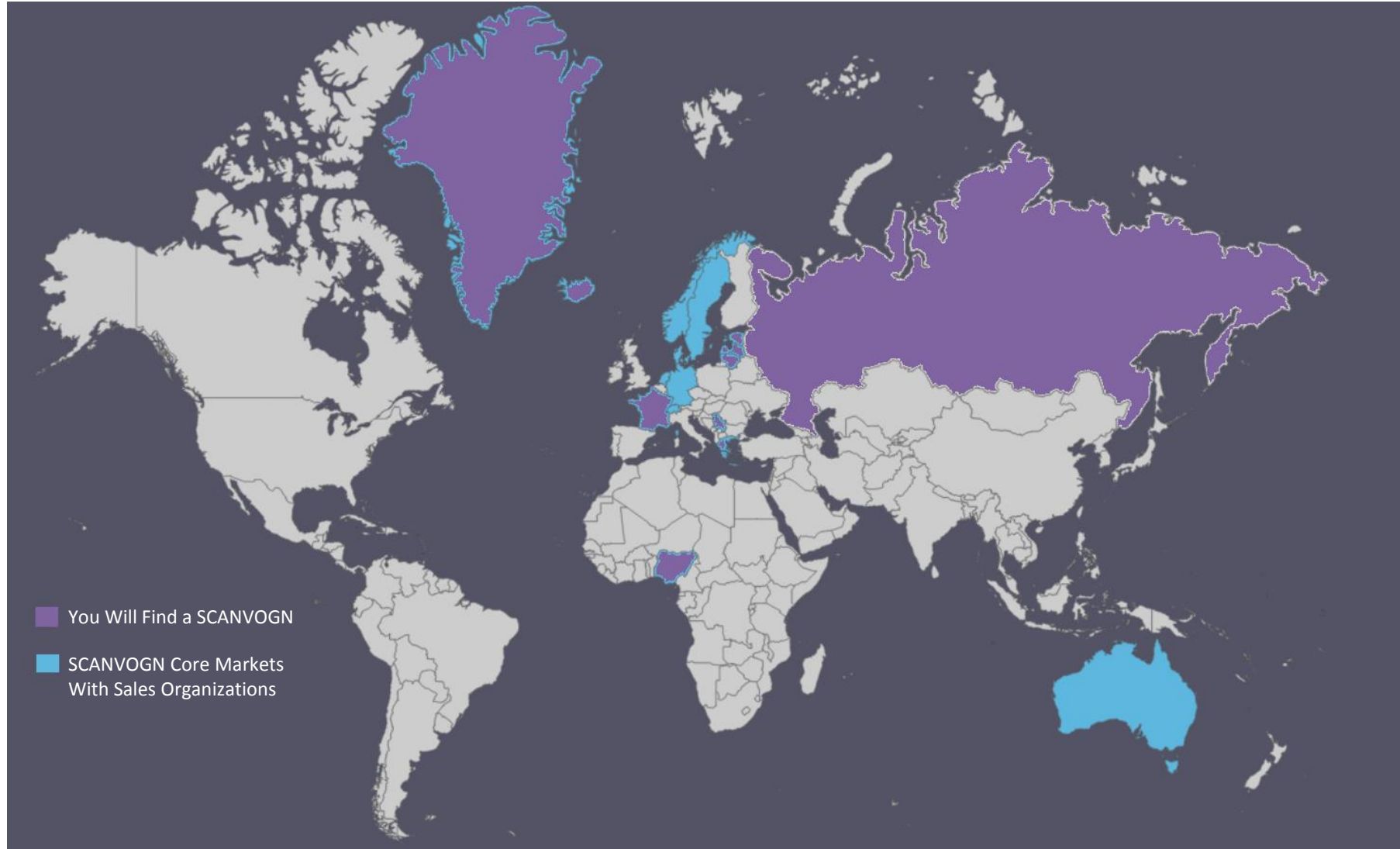
- Tough Environment calls for Tough Design.
- The Outback Line is a self-supplying unit providing all necessary facilities for the workers. As the stationary mining sites expands, the workers waste time on traveling back to there facilities for toilet visits or lunch breaks. The mobile solutions provide cost-saving flexibility for the mines. Any case where mobility and flexibility is a requirement the Outback Line will do the job.
- LNG investments requires long pipelines. A mobile solution allows the workers to bring there accommodation units as the pipeline progress.



- Accommodation units
- Site facilities
- Sanitary units
- Large Event & Special solutions
- Emergency camps
- Australian Outback
- All Units Below 3.500kg



Main Markets



- Core Markets
- Denmark
- Norway
- Sweden
- Germany
- Netherlands
- Australia
- Switzerland
- You Will Find a SCANVOGN
- Russia
- Faroe Islands
- Estonia
- Greece
- Iceland
- Latvia
- Lithuania
- Serbia
- Nigeria

SCANVOGN – From Local to Global

- SCANVOGN is ISO-9001 certified.
- The wagons for the European market is all EC approved.
- SCANVOGN is currently acquiring UNECE approvals for all models. This enables SCANVOGN to export road legal products to all 52 United Nations and Nations who recognize the **United Nations Economic Commission for Europe Regulations**.
- By flat pack systems and certified assembly stations SCANVOGN is able to export wagons globally.
- First international venture is starting in Australia 2014.

- ISO-9001 Certified
- EC Approved
- UNECE Approved



scanvogn

Thank You



scanvogn