

1" Metallic Models Pro-Series Pumps

1" Metallic Performance Specifications

| | |
|---|----------------------------------|
| Ratio: | 1:1 |
| Maximum Flow <small>GPM (LPM):</small> | 35 (133) |
| Displacement per cycle: | 0.16 (0.60) |
| <small>Gallons (Liters)</small> | |
| Air Inlet: (Female) | 1/4 - 18 N.P.T.F. - 1 |
| Fluid Inlet: | 1 - 11-1/2 N.P.T.F. - 1 |
| | Rp 1 (1-11 BSP parallel) |
| Fluid Outlet: | 1 - 11-1/2 N.P.T.F. - 1 |
| | Rp 1 (1-11 BSP parallel) |
| Max. operating pressure <small>psi (bar):</small> | 120 (8.3) |
| Suspended solids max. dia.: | 1/8 (3.2) |
| <small>in. (mm)</small> | |
| Weight <small>lbs (kg):</small> | 666100-X-C (aluminum) 19 (8.6) |
| | 666101-X-C (stainless) 36 (16.3) |
| | 666102-X-C (cast iron) 31 (14.1) |

Note: Add 8-lbs (3.63-kg) for cast iron air motor section

| | | | |
|---|----------|---------------|--------|
| Maximum dry suction lift <small>ft (m):</small> | 20 (6.1) | Rubber fitted | |
| Sound Level: | PSI | Cycles / Min | db (A) |
| | 70 | 60 | 64.5 |



Ordering Menu

| | | | | | | | |
|---------------------------------|--|-------------------------------|--------------------------|-----------------------------------|-------------------------------|----------|----------|
| 6661X | X | - | X | X | X | - | C |
| | | | | | | | |
| Center Body/ Threads | Fluid Caps/ Manifold Material | | Seat Material | Ball Check Material | Diaphragm Material | | |
| 0 Aluminum, N.P.T.F. | 0* Aluminum, Single | 1 Aluminum | 1 Neoprene | 1 Neoprene | | | |
| 1 Cast Iron, N.P.T.F. | 1* Stainless Steel, Single | 2 316 Stainless, Steel | 2 Nitrile | 2 Nitrile | | | |
| 2 Aluminum, BSP | 2* Cast Iron, Single | 3 Polypropylene | 3 Viton | 3 Viton | | | |
| 3 Cast Iron, BSP | 9* Stainless Steel, Dual | 4 Kynar PVDF | 4 Teflon PTFE | 4 T.F.E. (Teflon) / Santoprene | | | |
| | A* Aluminum, Single | 5 Carbon Steel | 6 Acetal | 9 Hytrel | | | |
| | B* Stainless Steel, Single | 8 Hard 400 Stainless Steel | 8 Polyurethane | B Santoprene | | | |
| | C* Cast Iron, Single | | A Stainless Steel | | | | |
| | D* Stainless Steel, Dual | | C Hytrel | | | | |
| | | | E Santoprene | | | | |

*steel hardware

* stainless steel hardware

Accessories

Air Line Connection Kit* | Kit No. 66073-2

Kit includes Piggyback Filter/Regulator with gauge, pipe nipple and a 5-foot section of air hose.

Service Repair Kits | Kit No. 637118-C (air section)

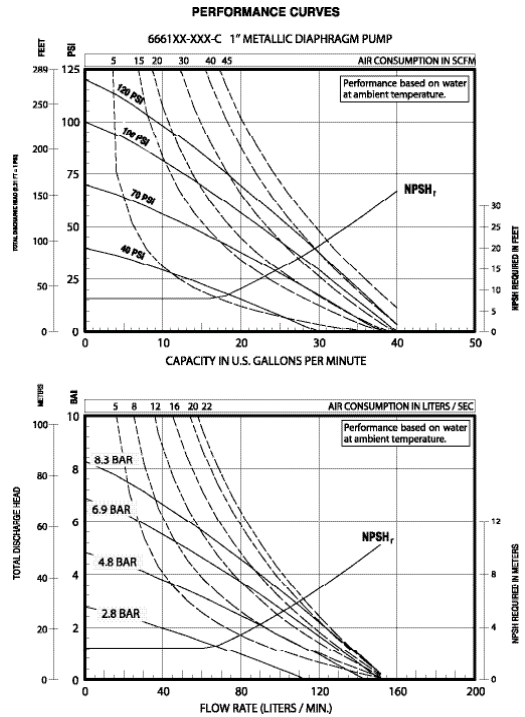
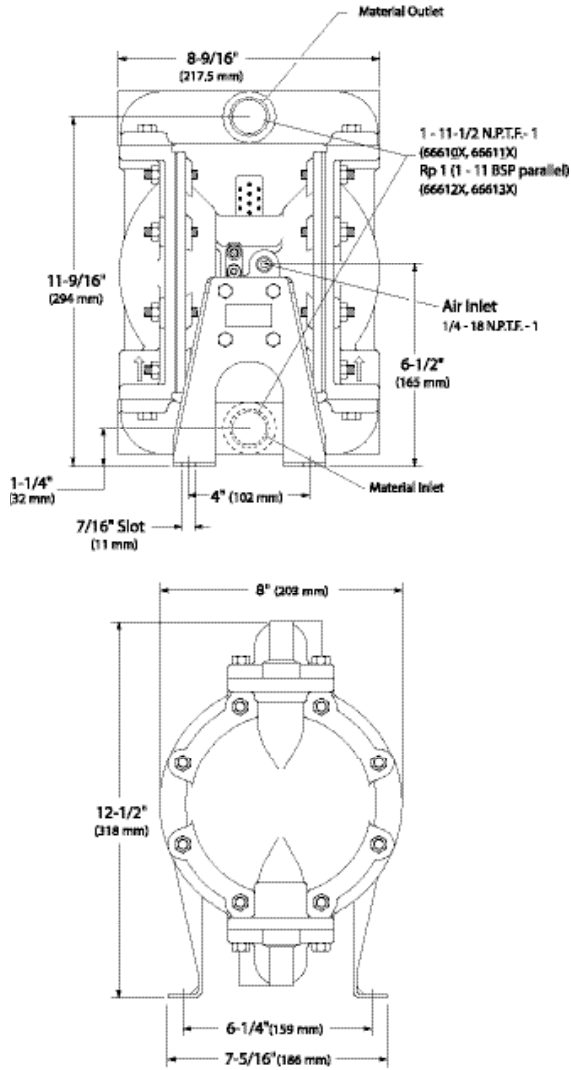
Kit No. 637119-XX-C (fluid section)

*Please note pumps are not included with these kits.

1" Metallic Dimensions and Flow Curves Pro-Series Pumps

1" Metallic Dimensions and Flow Charts

(Dimensions shown are for reference only, they are displayed in inches and millimeters (mm).)



Refer to www.irttools.com/aro/ for full size flow curves.

METALLIC