

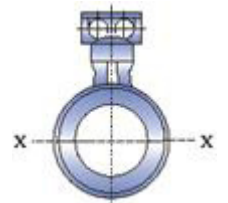
Wear Resistant Magnetic Slurry Flowmeter

The CeramaFlow range of flowmeters offer a robust solution for flow with wear resistant linings identical to that found in the pipe work in typical process plant applications. They are designed and manufactured in Australia to the highest of standards incorporating specialist manufacturing techniques from two HMA Group companies; Instrumentation and Wear Solutions.

FEATURES

- CeramaFlow is an Electromagnetic Flow Transducer
- High Accuracy
- Maintenance Free
- No Moving Parts
- Custom ID to suits current pipe
- Stable measurement in noisy application
- Large Turn Down
- Minimal Pressure Loss
- Range of Wear Resistant hard liners
- Various electrode materials for abrasion and chemical resistance

Specifications	
Sizes	100 & 125mm NB (Basalt Cylinders) Larger sizes available to customised manufacture requirements <i>Sizes to match basalt pipework</i>
Metering Tube	304 Stainless Steel
Liner	Basalt, Alumina, SiTech or Alumax Gold depending on application
Electrodes	Tungsten Carbide as standard, Tantalum and other metals available as required
Earthing	Grounding Rings
Process Flanges	AS2129 Table D/E ANSI 150
Pressure Rating	Flange Rating
Temperature Rating	100 °C standard
Environmental Protection	IP66
Paint	2 part Epoxy Coating or to required specification



- Steel Welded Construction
- Standard Remote Mounted Electronics Only
- All meters standard factory calibrated (NATA optional)
- Coil Resistances can be specified to operate correctly with most leading brand Magflow Transmitter Electronics.

APPLICATIONS

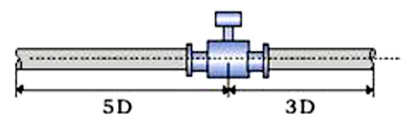
- Abrasive and Acidic Slurries
- Mill Feed
- Flotation
- Autoclave Inlet/Outlet
- Coal Slurries
- Gravity Circuits
- Tailings
- Pregnant Leach Solution
- Thickener Inlet/Outlet
- Bauxite Slurries
- Pulp and Paper



INSTALLATION

Flow Tube

- Can be installed horizontally, vertically up or sloped in the main flow.
- It is desirable to have the electrodes in the horizontal plane.
- Installation must ensure meter is full at all times.
- Straightlengthsrequired are 5D upstream and 3D downstream



Flow Transmitter

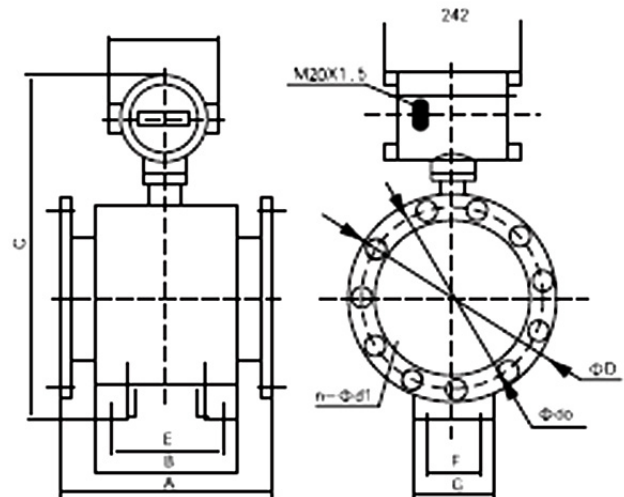
- For slurry applications with water as the main fluid the remote electronics can be installed up to 100m from the flow tube.

CeramaFlow CF900

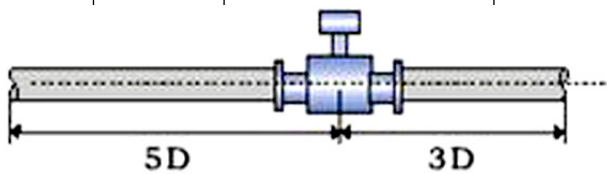


NB	Minimum Flange Size	Overall Length (A)	Body Length (B)	Overall Height (C)
100	150	300	172	450
125	200	350	226	515
150	200	350	226	515
175	200	350	226	515
204	250	400	266	515
225	250	400	266	515
254	300	500	316	615
280	300	500	316	615
303	350	500	316	670
330	350	500	316	670
356	400	600	396	725
380	400	600	396	725
400	450	600	396	780
430	450	600	396	780
456	500	600	396	886
480	500	600	396	886
500	550	600	396	886
600	600	600	396	1004

Accuracy	
Display and Outputs	0.3% of rate typical with standard electronics. Accuracy will vary with 3rd party electronics
Velocity Range	0.3 to 12 m/sec
Turndown	40:1
Repeatability	< 0.1%



CF900	Code	Linear Material					
	A	ALUMINA					
	B	BASALT					
	G	ALUMAX GOLD					
	S	SITECH	NOMINAL BORE				
		CODE	In mm - see above table				
		XXX					
			CODE	FLANGE SIZE			
			XXX	In mm - see above table, note minimum size			
			CODE	FLANGE TYPE			
			A	ANSI 150LB			
			D	AS2129 Table D			
			E	AS2129 Table E			
			Z	Other - Please specify			
			CODE	ELECTRODE MATERIAL			
			T	Tantalum			
			TC	Tungsten Carbide			
			Z	Other - Please specify			
			CODE	COIL RESISTANCE			
			S	Standard for use with HMA electronics or IF800			
			Z	Other - Please specify (ohms)			
Example							
CF900	B	300	350	D	TC	S	



INS-DS-0015 JUN. 2018