

LINEA light Ø75

Series 5920 / 5925 / 5927 with PJI / UAI / UAO / UAP wheels.

The new LINEA light Ø75

LINEA light Ø75 is now available for Furniture applications (EN12528) and Institutional applications (EN12530).

We have the right product for the right environment. When you place an order, please indicate which version your customer needs.



5920UAP075L51-10



5925UAP075L51-10

Linea Light Ø75 available range

| Product | Load Capacity | Housing Material | Wheel Body Material | Wheel Tread | Bearing | Friction | Manoeuvrability |
|------------------|---------------|------------------|---------------------|-------------|--------------------------------|----------|-----------------|
| 5920PJI075L51-10 | 60 kg | PA | PP | TENTEpren | plain bearing clipped | + | + |
| 5920UAI075L51-10 | 70 kg | PA | PA | PU | plain bearing clipped | ++ | ++ |
| 5920UAO075L51-10 | 80 kg | PA | PA | PU | plain bearing riveted | ++ | ++ |
| 5920UAP075L51-10 | 90 kg | PA | PA | PU | precision ball bearing riveted | +++ | +++ |

Load capacity tested according to EN12528 Castors for Furniture and EN 1230 Institutional castors.

Different fittings available with L-51-10 blind hole



Stem with threads



Plate



Collar stem with circlips



Stem with circlip

Different wheels available



PJI075



UAI075



UAO075



UAP075

LINEA light Ø75

Series 5920 / 5925 / 5927. PJI / UAI / UAO / UAP wheels.

2 standards, 2 different constructions

LINEA light Ø75 is now complying with EN 12530 (Institutional castors).

A POM spacer is inserted in the housing in order to reduce the swivel play.

LINEA light Ø75 complying with EN 12528 (Castors for furniture) does not need this POM spacer feature.

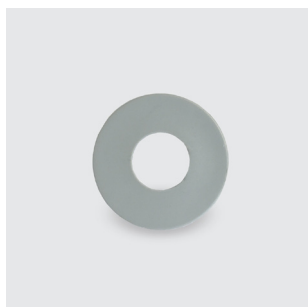
Please refer to the previously released document named «Comparison between EN12528 & EN12530» for any information between these two standards.

The new upper cap is flat and offers a better protection against dust and liquid.

To avoid any confusion between the two versions, the standard is marked below the bottom of the housing.



POM spacer



New upper flat cap



EN 12528 housing



EN 12530 housing
and POM spacer



EN 12528/30 housing
with upper cap



EN Indication on the housing

Total lock available

With 5927 version, total lock is now available on a 75mm synthetic castor.

During brake lever actuation, a die-cast component is released and a pin held in a hole from the upper cap piece is locking the swivelling while 2 pins from the brake component are blocked in the teeth from the wheel.

5927 versions are available with threaded stem S70-10x15/10 previously mounted. Plates are also available. Other fittings solutions can be studied on demand.



Brake unengaged
side view



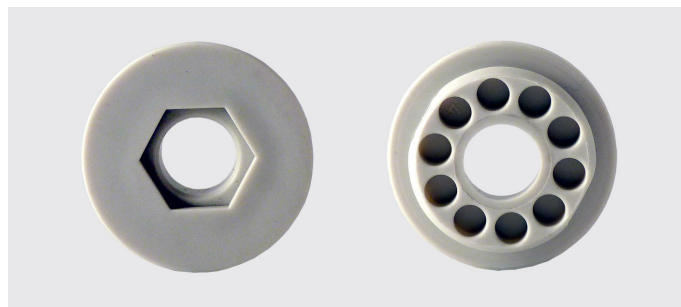
Brake unengaged
top view



Brake engaged
side view



Brake engaged
top view



Upper cap used on LINEA light Ø75, total lock version

LINEA light Ø75

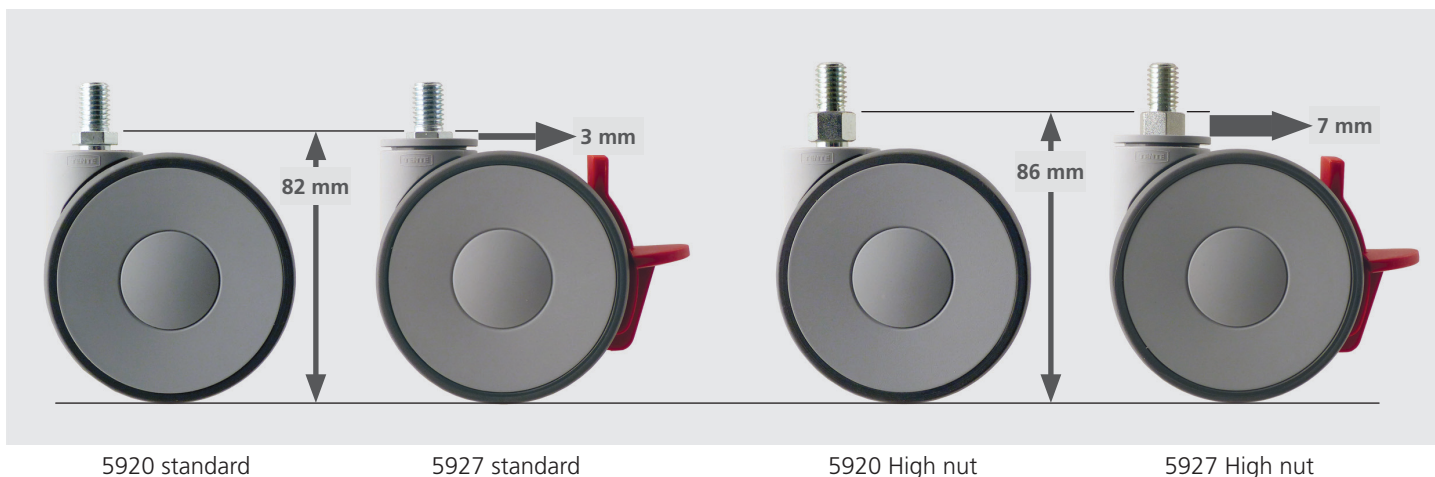
Series 5920 / 5925 / 5927. PJI / UAI / UAO / UAP wheels.

Easy assembly

The total lock solution is provided by an upper cap which covers a part of the nut from the threaded stem. In case of a difficult access to the nut when using a wrench, a «high nut» version is available as a standard fitting. The pairing between 5920 and 5927 version can be achieved with identical overall heights. The regular nut remains the fitting by default.

Please indicate «high nut» version when placing an order for this version of stem.

An Allen print is available on all versions. For an easy assembly, actuate the brake lever and then use an Allen wrench to screw the castor. Please be aware that the maximum torque for this assembly is 8 Nm.



Allen print at the bottom of the housing.

Various options available

| Castors | Electro Conductive (cable wire connection) | Stainless Steel | Non Magnetic | Safety | Kick Pedal |
|------------------|---|--------------------|-----------------|--------|---------------|
| 5920PJI075L51-10 | ✓ | ✓ | ✓ | ✗ | ✓ |
| 5920UAI075L51-10 | ✓ | ✓ | ✓ | ✓ | ✓ |
| 5920UAO075L51-10 | ✓ | ✓ | ✓ | ✓ | ✓ |
| 5920UAP075L51-10 | ✓ | ✓ | ✗ | ✓ | ✓ |

Available standard colours:

Housing:

- ral7001 Silver grey
- ral9002 Grey white
- ral9011 Graphite black

Tread:

- ral7015 Slate grey
- ral9011 Graphite black

Brake lever:

- ral7015 Slate grey
- ral3000 Flame red
- ral9011 Graphite black

Wheel caps:

- ral7001 Silver grey
- ral9002 Grey white
- ral9011 Graphite black
- Pantone 116C Yellow Smiles
- Pantone 186C Red Smiles
- Pantone 376C Green Smiles
- Pantone 2935C Blue Smiles

Make this product, a dedicated castor

- Any colour available by injection for any component on demand with special conditions.
- Laser printing is available for any part of the castors with one color (grey) logo, drawing or text reproduction.
- Pad printing is available for colored logo, drawing or text reproduction. Wheels caps and housing can be printed.
- Painted housing and wheel caps available on demand with special conditions.