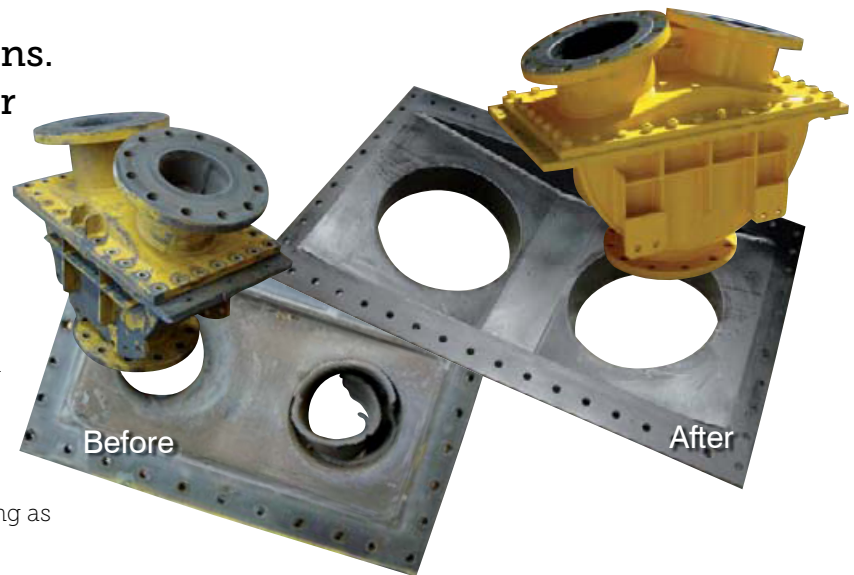


THE TECH TAYLOR VALVE, FROM USED TO NEW

Have your Tech Taylor Valves relined back to OEM specifications. Let us, the specialists return your valve to NEW!

THE REBUILD & RELINE PROCESS INCLUDES:

- Inspection to ensure the rebuild is economically viable and can restore the valve to 'as new' OEM specifications
- Strip out old lining
- Carry out repairs to the ball race and steel housing as required
- Grit blast external surfaces and flange faces prior to relining
- Reline with Hot Vulcanised Pure Gum Rubber (not glued in rubber sections) to OEM specification
- Carry out dimensional and integrity checks on the ball to ensure ball dimensions, specific gravity and condition are to OEM specification. Replace as necessary
- Hydro pressure test each valve to OEM specifications
- Complete external grit blast and paint to OEM specification
- Shaping of the replacement ball seating rubber to ensure a perfect seal
- Fix stainless steel nameplate which details rebuild date, serial and part number, lining material and pressure rating



LINING MATERIALS ARE AVAILABLE:

Pure Gum Rubber

Ceramic

Chlorobutyl

Neoprene

Nitrile

Other materials are available upon request.

