



SANY

Moving Tomorrow, Today!

CHAMPION IN ITS CLASS

RELIABLE.
COST-EFFECTIVE.
PRODUCTIVE.

CONSTRUCTION MACHINERY



COMPACT EXCAVATORS **SY135C**

Engine
ISUZU 4JJ1X
Rated power
78.5 kW / 2000 rpm
Bucket capacity
0.6 m³
Operating mass
13 800 kg



For challenging tasks, you need a first-class partner

Quality comes from experience. And from new ideas. This is why we combine these two crucial factors at SANY. This is because we are one of the world's leading producers, having sold more than 250 000 excavators in 10 years. This means that you can always rely on sophisticated products that have been tried and tested in practice. An impressive 5–7% of our annual turnover is dedicated to research and development. This is why we give you not only our word, but also our extraordinary five-year warranty as a guarantee of how powerful and robust our products are.

GLOBAL #1
IN EXCAVATOR SALES IN 2020!

98,705
EXCAVATORS SOLD GLOBALLY

15%
GLOBAL MARKET SHARE

**FIVE-YEAR
WARRANTY***

Moving Tomorrow, Today!

* Applicable in certain markets, please check with your local dealer.



SY135C

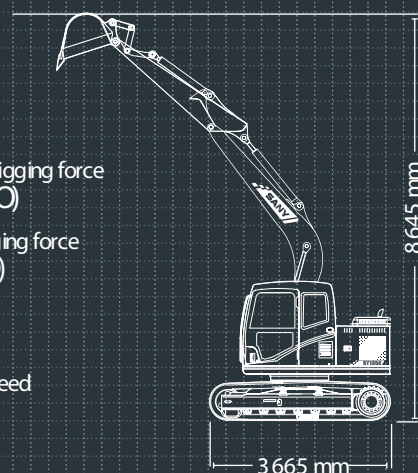
**SY135C
HARD FACTS**

Max. bucket digging force
103 kN (ISO)

Max. arm digging force
67 kN (ISO)

Swing speed
12 rpm

Max. travel speed
5.3 km/h



COMPACT EXCAVATOR REDEFINED

Despite its compact design, the SANY SY135C displays impressive versatility and performance. The universal machine is outstanding at digging, crushing, loading and backfilling. Perfect for use in places where space is limited. In road and canal construction, inner city areas, horticulture and landscaping and demolition work. Its power allows it to reach high excavating forces which would otherwise only

be possible with significantly bigger machines. All that with an astonishingly large operating radius. This saves time, since the machine therefore needs to be moved far less often on the construction site. Talking of movement, the compact dimensions of the machine facilitate easy and safe transport.



TOP PROPERTIES

ECONOMY

STRONG PERFORMANCE WITH LOW FUEL CONSUMPTION

More work with less fuel – the SY135C's sophisticated engine and hydraulic concept makes this a reality. The hugely powerful diesel engine, equipped with common rail technology and AdBlue emission control, puts on a strong show with its maximum torque of 375 Nm and 1 800 rpm. A choice of various operating modes and automatic speed reduction optimise fuel consumption in a tangible way. This is where power meets efficiency. The total savings thanks to improved fuel efficiency result in significant economic benefits.

QUALITY

Quality is worth it – High-quality components improve the machine's durability, while additionally increasing the intervals between each maintenance and service.

DIMENSIONS

Compact power – The SANY SY135C tackles work extremely efficiently as a compact excavator. High performance and impressive stability – the perfect combination to complete all tasks quickly and reliably on the construction site.

USER EXPERIENCE

Easy to maintain – The engine bonnet that can be fully opened and the clear arrangement of the key components in the centre make maintenance and service quick and easy.



SAFETY

Comprehensive protection – In addition to the rotating beacon and the driving alarm, the safety package also includes the fenders above the shield cylinders.

COMPONENTS

Reliable drive – The tried-and-tested ISUZU-4JJ1X engine guarantees reliable performance in the long term, even in harsh working conditions.

ECONOMY

Efficiency and power – The smart control system adapts the pump capacity to the available engine power for greater cost-effectiveness and reduced fuel consumption.

ECONOMY

The right kind of pressure

Both powerful variable displacement axial piston pumps are operated in such a way that they only build up as much pressure as is actually required. This saves fuel and prolongs the life of the components.

In addition, its hydraulic system has a sophisticated structure, which reduces friction loss and pressure drops in the pipelines and ensures that power is transferred efficiently for all working condition's.

SY135C



QUALITY

With the benefit of robustness

Durability and robustness are standard features on all SANY excavators. The reinforced structure of the SY135C lends the chassis exemplary stability, thereby prolonging the machine's service life. What's more, all of the panels are made solely of metal, which makes them particularly resilient.



Absolute reliability – for peace of mind!

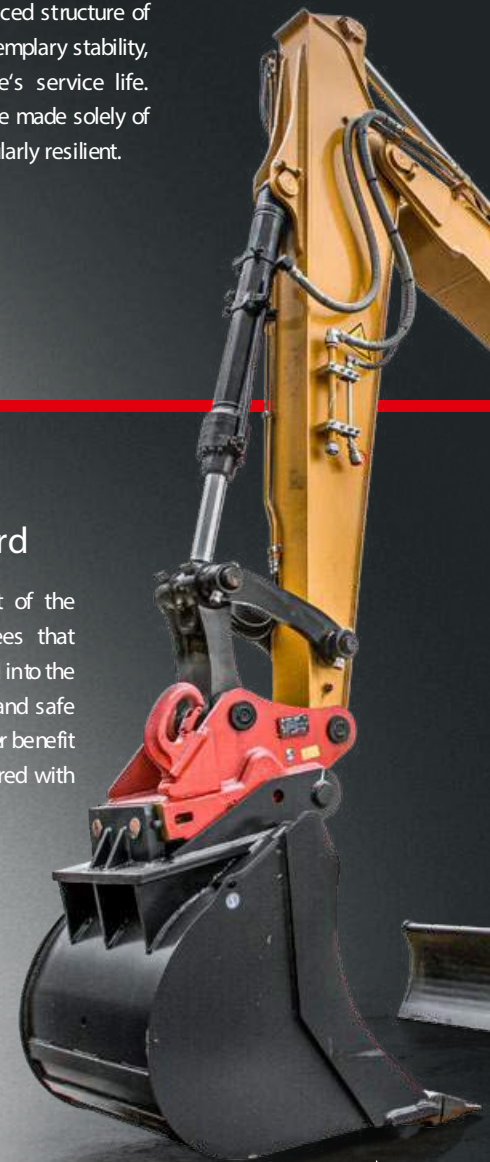
SANY's five-year warranty* gives you the assurance that you can fully count on your equipment.

* With participating partners

COMPONENTS

Flexibility as standard

The full hydraulic arrangement of the quick-change system guarantees that functions are perfectly integrated into the control menu, facilitating quick and safe attachment replacement. A further benefit is time and cost savings compared with regular retrofitting.





USER EXPERIENCE
Control with feeling

The joystick control enables all functions of the excavator to be operated intuitively. The hydraulics valve control responds to commands immediately. Together with the automatic speed setting this enables work to be carried out precisely and safely with higher efficiency and lower fuel consumption for the same operation. Not forgetting the large multifunctional monitor, which is easy to read and navigate, and displays all important information.

Our highlights – the added benefits SANY offers you:

- + A comfortable driver's cab with numerous extras
- + Robust, wide heavy-duty undercarriage
- + Hydraulic arrangement of the quick-change system
- + High-resolution colour display
- + High-quality machining thanks to robot-manufactured welded seams
- + Extensive safety equipment
- + LED work lighting



SAFETY
Minimising risks

Ergonomic handrails enable safe access to the maintenance platform. Large mirrors facilitate safe movement during operation, while the integrated safety valves keeps the boom and arm in position, even in the worst-case scenario.



USER EXPERIENCE
THE PREMIUM CLASS OF DRIVER COMFORT

A key feature of the SY135C is comprehensive comfort for its drivers. Excellent insulation around the cab provides reliable protection from noise and vibrations, as well as from high and low temperatures. The air-suspension driver's seat, provided as standard, offers the best possible comfort and protection from fatigue with its high seat backrest and various adjustment options. Plenty of space and room for movement, a radio and a 12 V jack, adjustable ventilation, heating and an automatic climate control system, a huge amount of stowage space, various options for storage and much more complete the comfort package.



DIMENSIONS
EVERYTHING WITHIN REACH

The SY135C impresses on-site thanks to its stability and stableness, meaning it brings its power quickly and safely to where it is needed. Its large working radius is also a plus point, with a maximum horizontal reach of 8290 mm and maximum excavation depth of 5500 mm. The heavy dozer blade ensures additional stability.



ENGINE

Model	ISUZU 4JJ1X
Typ	Water-cooled, 4 cylinder, with commonrail and Adblue
Exhaust emissions	Stage IV
Rated power	78.5 kW / 2 000 rpm
Max. torque	375 Nm / 1 600 rpm
Displacement	2 999 ccm
Batteries	2 x 12V / 120 Ah

SERVICE REFILL CAPACITIES

Fuel tank	245 l
Engine coolant	23.6 l
Engine oil	15 l
Drive (per side)	1.8 l
Adblue	20 l
Hydraulic oil tank	140 l

PERFORMANCE

Swingspeed	12 rpm
Max. travel speed	High 5.3 km/h, slow 3.1 km/h
Max. travel force	114 kN
Gradeability	35°
Bucket capacity	0.6 m³
Groundpressure	0.39 kg/cm²
Bucket digging force ISO	103 kN
Arm digging force ISO	67 kN

OPERATING MASS

SY135C	15 100 kg
--------	-----------

RELIEF VALVE SETTINGS

Implement circuit	343 bar
Swing circuit	250 bar
Travle circuit	343 bar
Pilot pressure	39 bar

HYDRAULIC SYSTEM

Main pump	2 x variable-piston-pump with electronic positive control
Max. oilflow	2 x 110 l/min
Travel motor	2 speed axial piston motor with planetary reducer and automatic multi-disc brake
Swing motor	Axial piston motor with planetary reducer and automatic holding brake
Max. oilflow (AUX1)	110 l/min

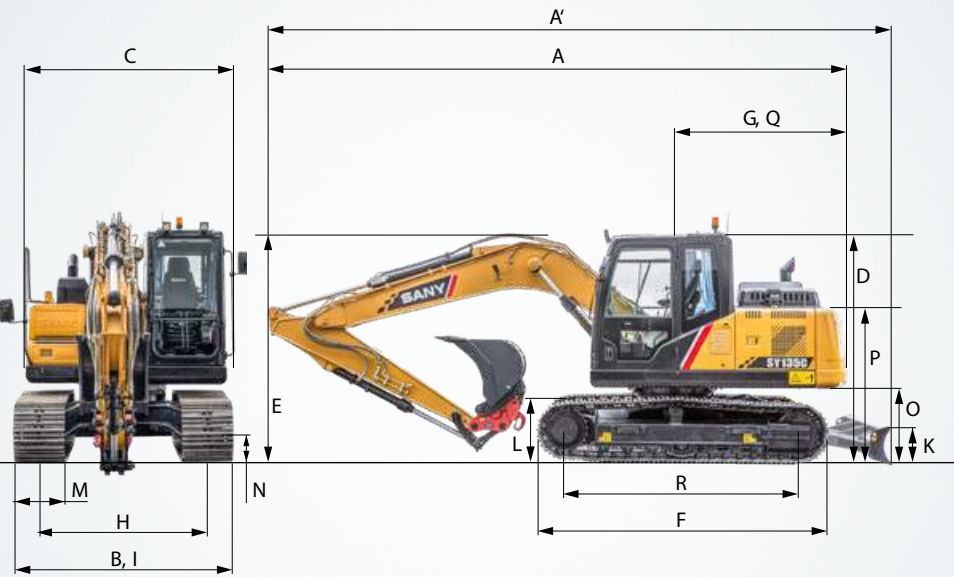
UNDER AND UPPER STRUCTURE

Boom length	4 600 mm
Arm length	2 500 mm
Bottom rollers	7
Top rollers	1
Rotation device	Planetary gear reducer driven by an axial piston motor, automatic hydraulic released slewing brake








DIMENSIONS (TRANSPORT)

A	Transport length	7 700 mm
A'	Transport length (blade)	8 850 mm
B	Transport width *	2 590 mm
	Transport width **	2 490 mm
	Transport width ***	2 690 mm
C	Upperstructure carriage	2 490 mm
D	Height over cabin/ROPS	2 820 mm
E	Height of Boom – transport	2 815 mm
F	Overall length of crawler	3 665 mm
G	Tail length	2 205 mm
H	Track gauge	1 990 mm
I	Undercarriage width (blade)*	2 590 mm
	Undercarriage width (blade)**	2 490 mm
J	Horizontal distance to blade	2 650 mm
K	Blade height	480 mm
L	Track height	815 mm
M	Track pads width	500 mm 600 mm 700 mm
N	Min. ground clearance	425 mm
O	Counterweigh clearance	910 mm
P	Engine cover height	2 130 mm
Q	Tail swing radius	2 205 mm
R	Center distance of tumbler	2 930 mm

* at 600 mm track pads width
** at 500 mm track pads width
*** at 700 mm track pads width



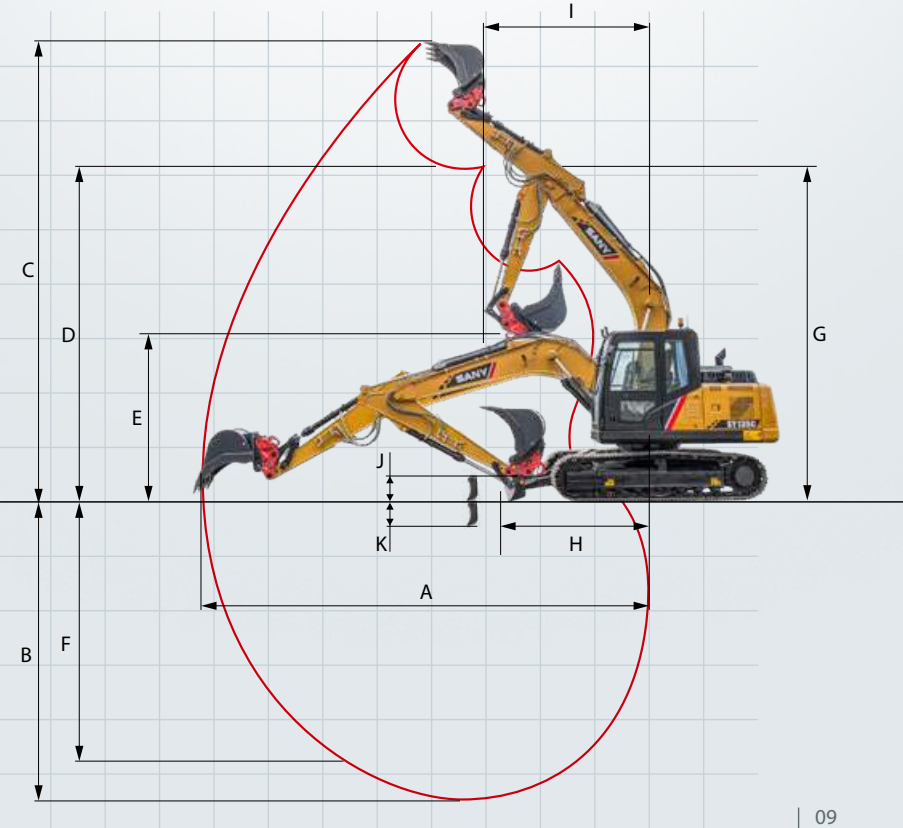
LIFTING CAPACITIES OF LOWER AND UPPER DOZER BLADE *

Load point heigh	Radius								Digging reach Maximal	
	 2.0m/6.6 ft	 3.0m/9.8 ft	 4.0m/13.1 ft	 5.0m/16.4 ft	 only below	 only above	 7.0m/23.0 ft			
7.0 m kg			3 200	3 200					2 550	2 550
23.0 ft lb			7 055	7 055					5 620	5 620
6.0 m kg				3 150	3 150				2 250	2 250
19.7 ft lb				6 945	6 945				4 960	4 960
5.0 m kg				3 500	3 500	2 400	2 400	2 400	2 100	2 100
16.4 ft lb				7 715	7 715	5 290	5 290	5 290	4 630	4 630
4.0 m kg			3 950	3 950	3 700	3 500	3 550	2 650	2 050	2 050
13.1 ft lb				8 710	8 710	8 150	7 715	7 825	4 520	4 520
3.0 m kg		5 800	5 800	4 650	4 650	4 050	3 400	3 700	2 050	2 050
9.8 ft lb		12 785	12 785	10 250	10 250	8 930	7 495	8 160	4 520	4 520
2.0 m kg		7 500	6 800	5 450	4 500	4 500	3 300	3 950	2 100	2 100
6.6 ft lb		16 535	14 990	12 015	9 920	9 920	7 275	8 710	4 630	4 630
1.0 m kg		6 800	6 450	6 150	4 300	4 900	3 200	4 150	2 200	2 200
3.3 ft lb		14 990	14 220	13 560	9 480	10 800	7 055	9 150	4 850	4 850
Ground kg		6 750	6 300	6 500	4 200	4 900	3 100	4 300	2 350	2 350
line lb		14 880	13 890	14 330	9 260	10 800	6 835	9 480	5 180	5 180
-1.0 m kg	4 550	4 550	8 450	6 250	6 550	4 100	5 200	3 050	2 600	2 600
-3.3 ft lb	10 030	10 030	18 630	13 780	14 440	9 040	11 465	6 725	5 730	5 730
-2.0 m kg	6 900	6 900	8 150	6 300	6 300	4 100	5 000	3 050	3 050	3 050
-6.6 ft lb	15 210	15 210	17 965	13 890	13 890	9 040	11 025	6 725	6 725	6 725
-3.0 m kg	9 600	9 600	7 200	6 350	5 600	4 150	4 350	3 100	3 750	3 750
-9.8 ft lb	21 165	21 165	15 870	14 000	12 345	9 050	9 590	6 835	8 270	8 270
-4.0 m kg			5 500	5 000	4 150	4 150			3 550	3 550
-13.1 ft lb			12 125	12 125	9 150	9 150			7 825	7 825

*at 600 mm track pads width

WORKING AREA

A	Max. digging reach	8 290 mm
B	Max. digging depth	5 500 mm
C	Max. digging height	8 645 mm
D	Max. dumping height	6 175 mm
E	Min. dumping height	2 920 mm
F	Max. vertical digging depth	4 850 mm
G	Overall height over arm by min. swing radius	6 500 mm
H	Arm head distance with work equipment retracted as far as possible	2 650 mm
I	Min. swing radius	2 500 mm
J	Max. clearance when blade up	490 mm
K	Max. depth of blade down	320 mm





The SY135C – outstandingly well-equipped as standard

Already fitted ex-works with an excellent range of equipment. The SANY SY135C is superbly equipped as standard with optional additional equipment to broaden its scope of possible applications.

OPERATORS COMFORT / CABIN

Airsuspensio seat	•
Heated seat	•
Heater	•
Automatic air conditioning C/H	•
Radio and speaker	•
Armrests (adjustable)	•
12v outlets	•
Wiper	•
Sprayer f. wiper	•
Sky light openable	•
Integrated cooling box	•
AUX 1 on Joystick	•
AUX 2 on Joystick	•
Removable front-window	•
Rubberfloor	•

WORKING LIGHTS

Lights – front (LED)	•
Lights – boom (LED)	•
Lights – platform (LED)	•

UNDERCARRIAGE

Steel tracks	•
Cylinder guardes – dozer blade	•
Holes/loops for fixing	•

Standard equipment • Special option •

The standard and special options differ depending on the country in which the compact excavator is delivered. If you have any questions, please contact your dealer directly.

WORKING EQUIPMENT

Boom and arm load holding valves with overload indicator	•
Double acting circuit for hydraulic quick coupler with piping	•
Breaker&Shear line proportional on Joystick with piping	•
Rotation line proportional on Joystick with piping	•
Flow adjustment for attachments	•
Dozer blade	•
Without dozer blade	•
Arm 3 000 mm	•

SAFETY

Battery master switch	•
Warning beacon	•
Lockable hoods	•
Handrails	•
Lockablge fuel cap	•

ENGINE

Auto idle	•
Diesel filter	•

HYDRAULIC SYSTEM

Swing brake	•
2 speed travel	•
Hydr. Pre-pressure operating joysticks	•
Piping for additional hydraulic function AUX 1	•
Piping for additional hydraulic function AUX 2	•
Mainfilter	•

A SERVICE YOU CAN RELY ON

Just as we do with our excavators, we also demand high quality and reliability of our service products. This underlines our equipment's performance in terms of their durability and their excellent price-performance ratio. After all, maintenance is crucial

for efficiency, cost-effectiveness and safety. Your SANY dealer is happy to help you with a comprehensive range of services to ensure that your machine continues operating efficiently in the long term.

SANY – flexible, fast and always there for you

Rapid assistance, tailored advice and a reliable supply of original parts – that is what we mean by a premium service.



The added benefits SANY offers you:

- + Fast supply due to central located parts warehouses
- + More than 15,000 spare parts to make your machine highly reliable
- + Expert knowledge for optimal supply for your machine
- + Thanks to SANY's special training programme, our dealers are always kept up-to-date so that they can face all technical challenges.



Parts supply – quick and reliable

With the purchase of a SANY compact excavator you have made an investment in the future. Fast availability of spare parts is your guarantee of minimal downtimes and failure times.

Detailed information in black and white

Handbooks and documents are available for all SANY compact excavators, and these can help you with operation, maintenance, servicing and repairs. These include operating and maintenance instructions and technical specifications.



PERFORMANCE YOU CAN RELY ON

The SY135C resoundingly proves that the performance of a compact excavator is not necessarily determined by bulky size. Weighing a total of almost 15 tonnes, it offers the optimum ratio of power to manoeuvrability. In addition, the robust, wide heavy-duty undercarriage and the robust dozer blade provide a high level of stability. This allows it to optimally apply its power – for a comprehensive range of applications anywhere where larger machines have to fit.

QUALITY IS WORTH IT

High-quality materials and careful machining are the basis for a long service life. This is part of a sophisticated concept: For example, the boom on the topside and underside is manufactured from one single sheet and welded continuously from front to back.

COMPACT POWER

The machine offers excellent excavating forces at maximum stability for its class.

EASY TO MAINTAIN

All routine checks and work on the machine can be carried out quickly and easily. For example, the machine's various bearings can be lubricated with grease nipples from just one point.

COMPREHENSIVE PROTECTION

Safety for users, machines and the working environment is of the utmost importance at SANY. The SY135C's safety equipment includes, amongst other features, a driving alarm and rotating beacon, an overload warning for lifting safety valves and of course the corresponding protective plates over the blade cylinders.

RELIABLE DRIVE

The powerful ISUZU-4JJ1X engine with AdBlue emission control ensures the correct forces are applied for all tasks.

EFFICIENCY AND POWER

In conjunction with the electronic fuel injection, the autothrottle function adjusts the engine speed to the power required. This means that the smart hydraulic system reduces the fuel consumption, engine wear and exhaust emissions.

TECHNICAL HIGHLIGHTS

Engine	ISUZU 4JJ1X
Rated power	78.5 kW / 2 000 rpm
Max. torque	375 Nm / 1 600 rpm
Max. travel speed	5.3 km/h
Swingspeed	12 rpm
Main pump	2 x variable-piston-pump with electronic positive control
Max. oilflow	2 x 110 l/min

Not all products are available in all markets. As part of our continuous improvement process, we reserve the right to modify specifications and designs without giving prior notice. The figures may contain additional options.



Moving Tomorrow, Today!

SANY Australia & New Zealand
21 Efficient Drive,
Truganina, VIC 3029
T: 1300 888 316

sales@sany-aus.com
www.sanyaustalia.com.au