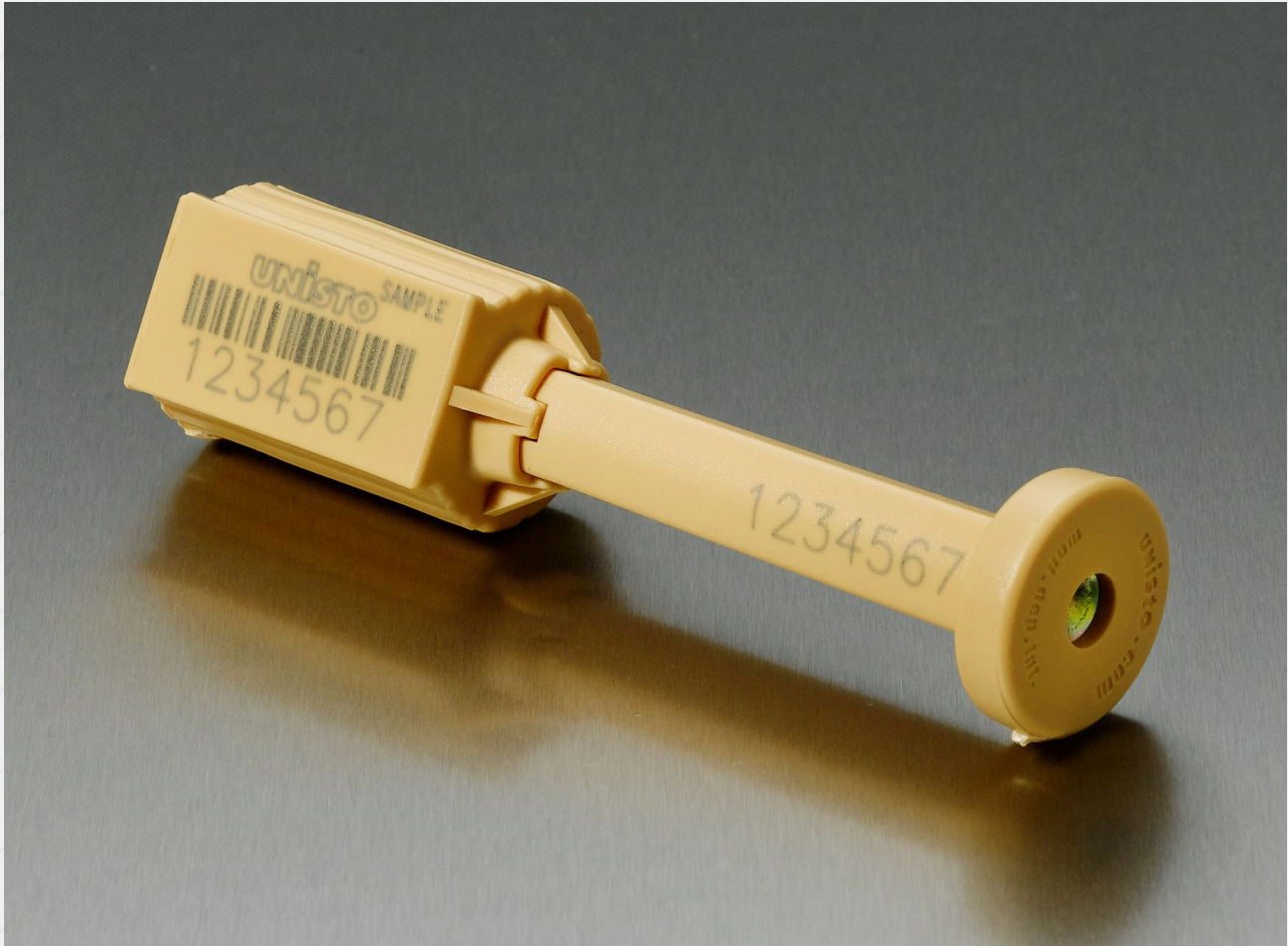


# Unisto Genius solid



A Barrier Bolt Seal used in industries such as Transport, Retail and Container Cargo Shipments. Unisto Genius Solid for sealing Containers, Trailers and Railway- and Goods Wagons and Truck doors. This Security Seal prevents opportunistic theft. Removal requires a bolt cutter. Available personalised with name/logo for clear identification and streamlining processes. Available in a range of plastic colours.

---

## Features of this security seal

### Type of Seal

Bolt Seals

---

### Application

Container

---

Logo can be insert moulded on the top of the pin (optional)

4 Spikes emerge from top of the closure to frustrate any attempt to conceal the evidence of re-attaching the pin

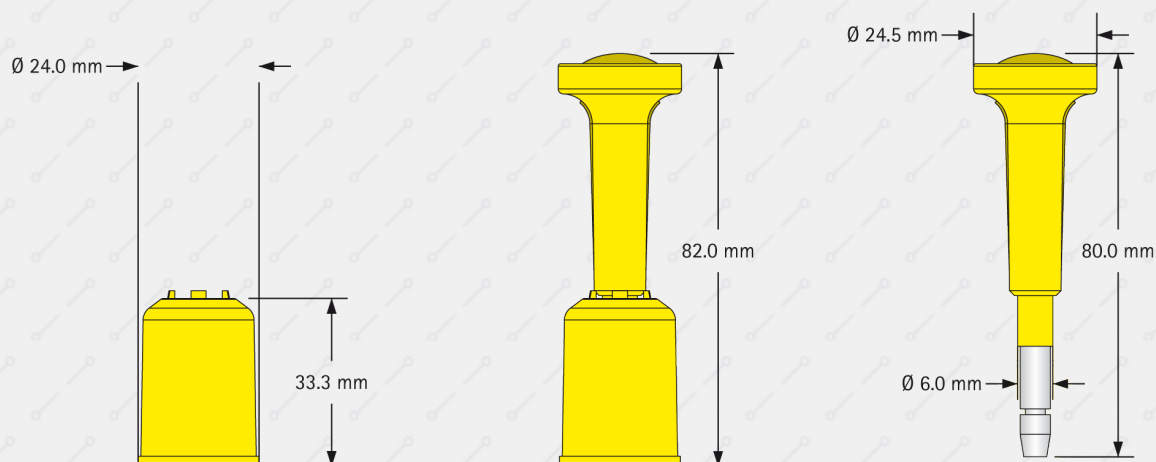
Embossed logo and arrows in reverse directions is designed as anti-tampering feature

Any attempt to re-attached the pin will distort the embossed arrows and „Unisto“

Embossed words and arrows of the pin is difficult to imitate due to complexity of the tool

Anti-spin feature

Each set is individually packed in a security polybag



### Materials

Bolt: steel, yellow zinc pattern Body and spring: steel Coating Body and pint: Polypropylene (PP) Coating

### Tensile strength

Approx. 7.8 kN (800kg)

### Numbering

Up to 8 digits

### Barcoding

Interleaved 2/5 or Barcode 128  
Others on request

### Customer name

Serial number and company name directly laser marked on pin and body

### Plastic Colours (laser)

Light blue, Light yellow, Light green, white, pink

### Packing

10 pieces per tray, 200 seals per carton 20 pieces per box, 200 seals per carton

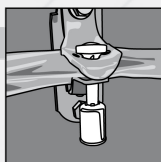
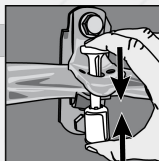
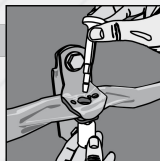
### Storage

Seals should be stored in original box away from direct sunlight and chemical fumes. Store at 22°C/50% RH. Typical shelf life of seals made of PP and PA are approx. 18 months from date of manufacture. Nevertheless please do not order more than an annual quantity.

### Packing size

carton	tray type	405 x 210 x 215 mm	9.5kg
	box type	320 x 266 x 190 mm	10.0kg

## How to close



## How to open

