

VistaCam iX – brilliant images and excellent caries diagnosis

One camera, many options



COMPRESSED AIR
SUCTION
IMAGING
DENTAL CARE
HYGIENE



VistaCam iX – one camera, many options

Communication with patients, caries diagnostics and documentation – all in one. Camera systems from Dürer Dental provide valuable support for dental treatments and enhance patient understanding of the necessary treatment measures. VistaCam iX sets new standards here.

Advantages of the VistaCam iX

The intraoral camera meets the highest requirements for fully digital transmission with its depth of field and image quality. The intelligent, interchangeable head mechanism provides various application options. Whether macro or intraoral images, VistaCam iX supports you in caries diagnosis, early detection and plaque visualisation. Caries and plaque filters in the imaging software DBSWIN show caries activity by means of a colour scale and numeric evaluation. The new Proxi interchangeable head allows for detection of proximal caries – without exposure to radiation. The Poly interchangeable head with the latest LED technology and soft-start function is well suited for light curing all common dental materials.

Beautifully shaped

Not only do its functions distinguish the VistaCam iX, it also satisfies all ergonomic demands. It was awarded the well-known 'iF product design award 2011', the 'Good Design Award 2012' and is the 'red dot design award winner 2011'. Other benefits: decoupling can take place directly on the handpiece, making the VistaCam iX the perfect multi-user solution. A motion sensor switches the camera on and off and ensures efficient use.



Images and video clips can be used flexibly in discussions with patients. This makes treatment understandable and transparent.

Your application options at a glance

Simple interchangeable head principle



Ergonomic hand switch

Multi-user capable

Automatic activation/deactivation

Fully digital data transmission



'Cam' interchangeable head for high quality intraoral images

- Intraoral shots with excellent image quality
- Perfect and homogeneous illumination
- Recording of video clips



reddot design award winner



product design award

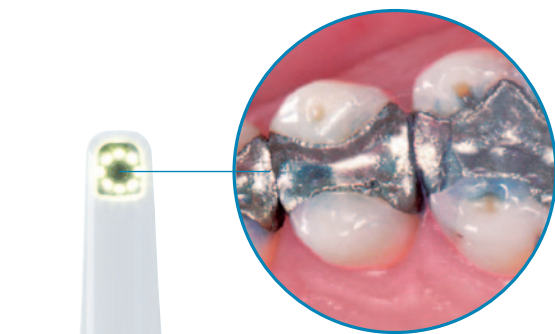


Focus Open Gold



NOMINIERT

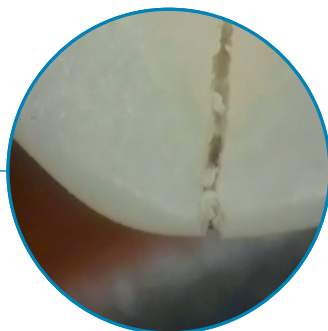




WW

'Macro' interchangeable head for highly magnified, high quality images

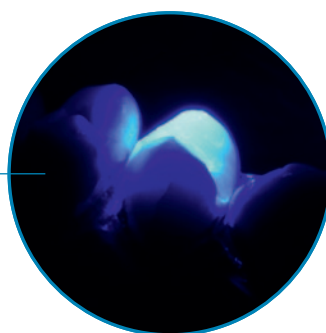
- 120 x magnification



P

'Poly' interchangeable head for light curing

- For polymerisation of all common light-cured dental materials
- With modern LED technology and soft-start function

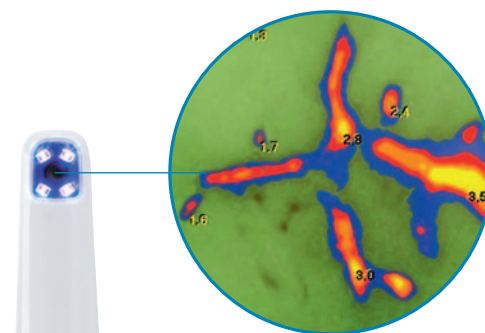


With the Proof interchangeable head, any carious lesions are detected and rated on a scale and assigned a numerical value.

0 - 1.0	Healthy tooth enamel
1.0 - 1.5	Incipient enamel caries
1.5 - 2.0	Deep enamel caries
2.0 - 2.5	Dentine caries
2.5 - >3.0	Deep dentine caries

The 'Proof' interchangeable head makes caries and plaque on occlusal and smooth surfaces visible

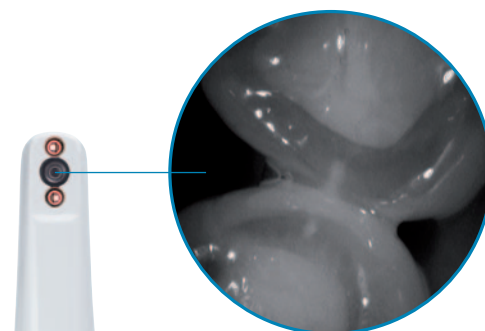
- Software evaluation for detection of caries lesions and plaque shown fluorescently
- Violet LED light stimulates metabolic products found in cariogenic bacteria, causing them to glow red
- Healthy enamel gives off green light



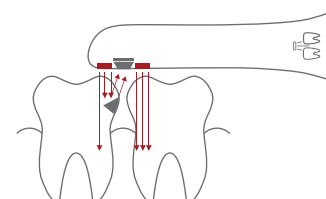
W➔

'Proxi' interchangeable head for detection of proximal caries

- Diagnosis assistance without exposure to radiation
- Proximal caries is detected gently and early
- Infrared technology makes healthy enamel appear translucent
- Carious lesions have a light, opaque appearance



W➔



Caries lesions reflected infrared light

More versatile than ever!

Cam



This is what counts:

- Intraoral shots with excellent image quality
- Software analysis for the detection of caries lesions and visualisation of plaque by means of fluorescence
- DBSWIN saves shots as image or video
- Ergonomic hand switch
- Fully digital data transmission
- Polymerisation
- Helps diagnose proximal caries without exposure to radiation, thanks to infrared technology

The technology at a glance

Technical Data	VistaCam iX PC version
Connections	USB 2.0
Freeze frame module	via PC/laptop
Multi-user application	Plug & Play, cable can be connected to handpiece
Activation	Handpiece (optional foot switch)
Handpiece weight	50 g (without cable)
Handpiece length	190 mm
Power supply	USB (5 V)
Transmission path	USB 2.0, via cable (2.5 m)

	Cam interchangeable head	Macro interchangeable head	Proof interchangeable head
Resolution	470,000 px	470,000 px	470,000 px
Object distance	5 - 35 mm (depth of field 30 mm)	3 mm (120 x magnification)	10 mm fixed, with spacers
Lighting	8 LEDs (white)	8 LEDs (white)	4 LEDs (405 nm, violet)
Optical system	Glass lens, tempered	Glass lens, tempered	Glass lens, tempered

	Poly interchangeable head
Light source	Power LED
Wavelength	460 nm (+ 10 nm)
Light intensity	1,000 mW/cm ²
Diameter lens	10 mm Ø
Cable length	250 cm
Power unit	12 V DC at 1.0 A
Polymerisation depth	depending on type, colour and translucence of composites

	Proxi interchangeable head
Resolution	470,000 px
Object distance	7 mm fixed with positioning holder
Lighting	2 LEDs (850 nm, infrared)
Optical system	Glass lens, tempered



Handpiece holder on TFT monitor



Disposable protective sheath



DÜRR DENTAL AG
Höfigheimer Strasse 17
74321 Bietigheim-Bissingen
Germany
www.duerrdental.com
info@duerr.de

