



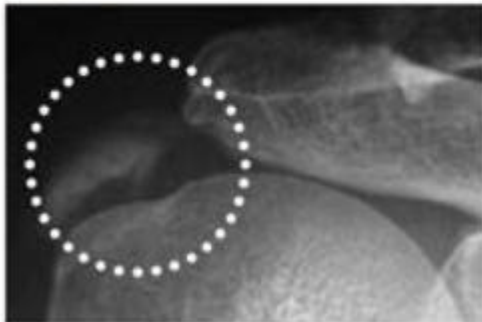
FOCUSED SHOCKWAVE THERAPY

A WHOLE NEW FORMULA FOR CHRONIC PAIN

Offer your patients a non-invasive alternative to surgery. The therapy enhances tissue regeneration, relieves chronic pain, eliminates calcifications and relaxes muscles.

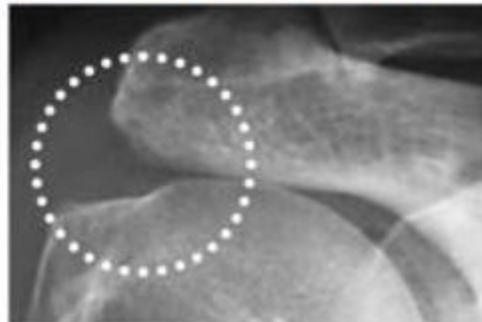


BEFORE

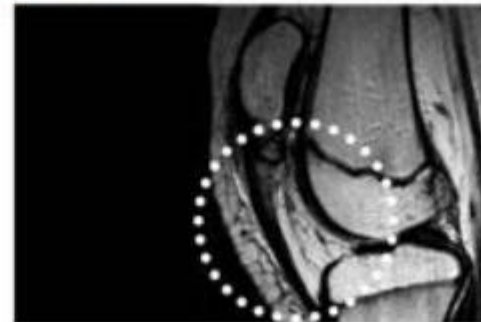


SHOULDER CALCIFICATION, COURTESY OF: BTL

AFTER SHOCKWAVE THERAPY

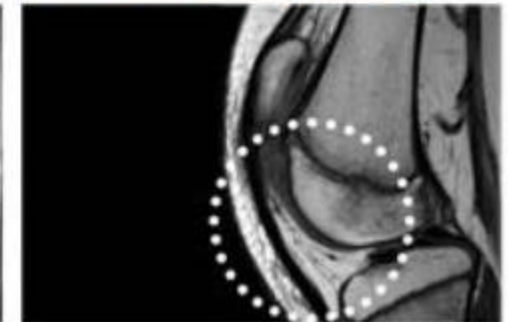


BEFORE



PATELLAR TENDINOPATHY, COURTESY OF: BTL

AFTER SHOCKWAVE THERAPY



PRODUCT IS NOT AVAILABLE FOR PURCHASE BY THE GENERAL PUBLIC.
Always read the user manual. Patient results and experience may vary.
PHYSIO@BTLMED.COM.AU



SETTING NEW STANDARDS

Patented **electroacoustic technology** engineered to match the perfect balance between the best therapeutic parameters and the highest lifespan.

The only **FOCUSED SHOCKWAVE** of its kind on the market with the **highest lifespan** and non-decreasing shock intensity during its whole lifespan.

The only device equipped with **constant monitoring** of shock intensity.

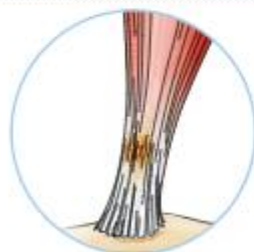
The BTL secret lies in an optimal focal zone that allows for covering the treated area easily, whereas **high Energy Flux Density** enables treatment of diverse tissues.



Switch & Go applicator replacement service.

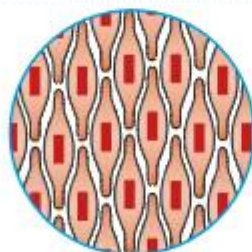
Have the therapy process under control by adjusting parameters directly from the applicator display.

BTL FOCUSED SHOCKWAVE is completely liquid-free and requires no maintenance. Just plug in and initiate the therapy with no need for preparation.



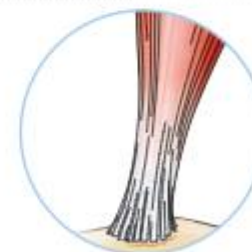
BEFORE

Shock waves spread through the impaired tissue.



DURING

Shock waves stimulate cells responsible for tissue repair.



AFTER

Tissue regenerates and heals.

©2023 BTL Group of Companies. All rights reserved. BTL® is registered trademarks in the United States of America, the European Union and/or other countries. The products, the methods of manufacture or the use may be subject to one or more U.S. or foreign patents or pending applications. In Australia the device is a non-invasive therapeutic device using acoustic waves in order to stimulate a local biological response in the treated tissue. The biological response includes a decrease in local pain sensation, muscle relaxation, an increase in blood microcirculation resulting in local metabolism enhancement and local trophic improvement. The device also induces local neovascularization which promotes local trophic improvement. The device can be used for the treatment of painful conditions of the musculoskeletal system (e.g. chronic tendinopathies, insertional pain, trigger points, myofascial pain syndrome, fasciitis, chronic back pain, bursitis and other painful syndromes), degenerative and overuse conditions of the musculoskeletal system (e.g. arthrosis, arthritis, calcifications and chronic inflammations), spasticity, functional disorders of the pelvic floor region and reproductive organs (e.g. Chronic pelvic pain syndrome/chronic prostatitis, Peyronie's disease, Erectile disorders), cellulite, open wounds, wounds with disturbed healing, burns, lesions, skin ulcers, scars and other skin disorders connected with impaired skin integrity and/or trophics and bone tissue disorders such as non-healing fractures (pseudoarthrosis). ARTG 318781. We are protecting our clients' personal data responsibly.

PRODUCT IS NOT AVAILABLE FOR PURCHASE BY THE GENERAL PUBLIC.

Always read the user manual. Patient results and experience may vary.

PHYSIO@BTLMED.COM.AU

