

BICYCLE ERGOMETER

# *ergoselect 4*



***ergoline***  
MOVING TO HEALTH

BICYCLE ERGOMETER

## *ergoselect 4*

The modular premium ergometer series by ergoline combines state-of-the-art technology, high-quality materials and timeless design in a convincing overall concept.

With its unique variety of models and technical details, *ergoselect 4* can be fine-tuned to the needs of each individual user.

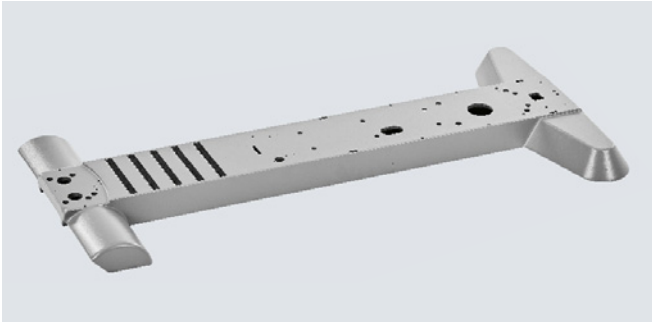


- timeless design
- high-precision measuring technology
- whisper-quiet belt drive
- base plate and handlebar column made of aluminum
- broad open step-through frame
- patient weight up to 200 kg
- load range from 6 to 1000 Watts
- adjustable in 1-Watt steps
- pedals stop moving after use
- wide range of expansion options



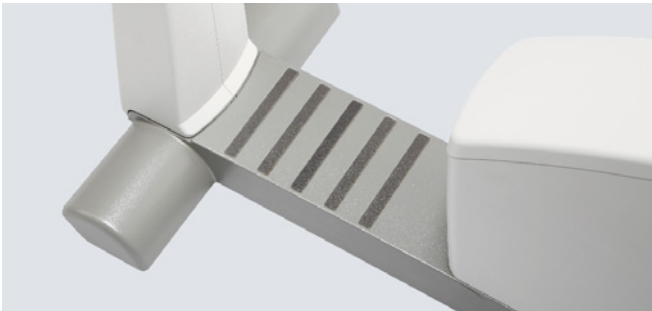
Learn more about ergoselect 4 –  
with 360° view and technical features.





### High-quality aluminum base plate

The massive aluminum platform guarantees a high level of stability, while the non-slip inlays ensure additional patient safety.



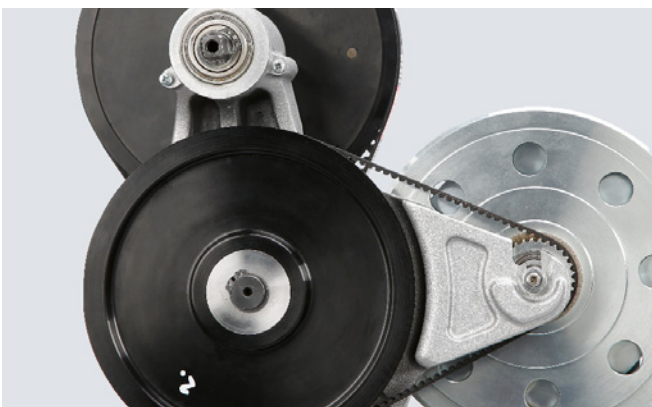
### Easy access

The broad open step-through frame and low entry height facilitate access to the ergometer, especially for older or disabled patients.



### Stable up to patient weights of 200 kg

Thanks to the seat height adjustment with gas spring or motor, patients weighing up to 200 kg can safely undergo ergometric examinations.



### Whisper-quiet drive technology

The 2-stage belt drive of the load unit, specifically developed by ergoline, guarantees quiet and slip-free operation – even at high loads.



### Comfortable, secure handlebar clamping

The ergonomic, closed handlebar has a wide adjustment range and thus offers the optimal grip position for every patient.

The convenient clamp lever securely locks the handlebar in place.

## Control terminals

Choose from different control terminals:



Type M: Control via PC/ECG unit

Type P: Control via PC/ECG unit or by exercise test protocols, and manual operation

Type T: Same as type P, plus color touch display, training and test protocols, and numerous expansion options



## Integrated SpO2 measurement

The ergometer can be equipped with an SpO2 measurement module for precise monitoring of the patient's oxygen saturation during ergometric testing.

A wide selection of suitable SpO2 sensors is available in different sizes.



## Automatic blood pressure measurement

The optionally integrated, automatic blood pressure measurement works with a specifically developed cuff microphone.

The combination of auscultatory measurement and sophisticated algorithms for artifact suppression yields precise measurement values – even at high loads.



## Seat adjustment with gas spring or motor

Convenient variants for the mechanical adjustment of the seat height can be integrated. Options include gas spring-assisted, stepless or motor-assisted electrical seat height adjustment to facilitate the frequently problematic access to the ergometer, especially for older or disabled patients.

The adjustment can easily be made by using the keys on the control terminal.



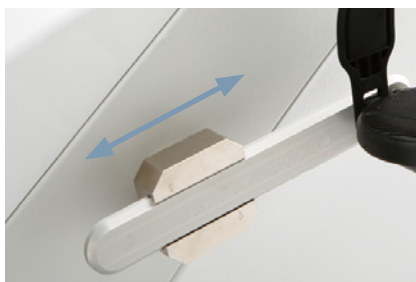
## Motor-assisted adjustment of handlebar height

The handlebar and seat position can be precisely adjusted to the respective patient for special applications (for instance, performance diagnostics, rehabilitation).



**Horiz. seat adjustment**

The seat position can be shifted horizontally by approx. 12 cm.



**Pedal crank, adjustable**

The length of the pedal cranks can be adjusted in a range from 12 to 17 cm.



**Comfort pedals**

Extra-wide pedals with adjustable pedal straps (ratchet mechanism).

## *ergoselect 4 – Measurement*

### **Dimensions**



## ergoselect 4 – Technical Specifications

Bicycle ergometer		ergoselect 4		
Brake system	microprocessor controlled eddy current brake			
Drive	two-stage brake system with special drive belts (no slippage, low wear)			
Load	6 – 999 Watt, speed independent			
Accuracy	according to DIN VDE 0750-238			
Speed range	30 – 130 rpm			
Handlebar adjustment	inclination 360° ● / handlebar height with motor ○			
Saddle height adjustment	continuously mechanical ● / with gas spring ○ / with motor (incl. patient) ○			
Patient height	approx. 120 cm – 210 cm			
Patient weight (max.)	160 kg ● / 200 kg ○ (For the higher allowed patient weight of 200 kg, the gas-spring or motor assisted saddle height adjustment is required.)			
Control terminal	M (remote control)	P (ergometry)	T (color touch)	
Display, numeric	load, speed (RMP), time, blood pressure, heart rate (LCD)		7" color display	
Display, graphic (e.g., load or pulse curve)	–	–	●	
Patient display	speed (RMP), saddle height (with optional saddle motor)			
Keyboard	–	membrane keyboard	touch keyboard	
Exercise test protocols				
User programmable	–	10	10	
Manual load control	–	●	●	
Training protocols				
User programmable	–	–	10	
Preprogrammed performance tests	–	–	3	
Expansion options				
Automatic blood pressure measurement	○	○	○	
SpO2 measurement	–	○	○	
Cardio set (HR receiver / chest belt)	–	○	○	
Interfaces				
digital (RS-232, USB) / Bluetooth / WiFi		● / ○ / ○		
Dimensions and weight				
Ergometer		Ergometer with packaging		
Length: 105 cm		Length: 116 cm		
Width: 49 cm (width of handlebar approx. 53 cm)		Width: 60 cm		
Height: 127 cm (114 – 140 cm with electrically adjustable handlebar)		Height: 148 cm		
Weight: approx. 66 kg		Weight: approx. 80 kg		
Miscellaneous				
Power supply		100 – 240 V / 50 – 60 Hz / 100 VA max. (max. 140 VA for ergometers with motor-assisted adjustment of the handlebar)		

● Standard ○ Option

PREMIUM QUALITY



MADE IN GERMANY

**ergoline GmbH**

Lindenstraße 5 | D-72475 Bitz, Germany

Phone: +49-(0)-7431-9894-0 | Fax: +49-(0)-7431-9894-128

email: [info@ergoline.com](mailto:info@ergoline.com) | [www.ergoline.com](http://www.ergoline.com)