

# NUWEIGH®

## VEHICLE WEIGHING SYSTEM

WEIGH. PRINT. REPORT.

*All in the one wireless system!*



**COMPLETELY WIRELESS  
SYSTEM WITH  
LONG BATTERY LIFE!**

### SYSTEM INCLUDES:

- **4x Axle Load Pad: MDC-221 #36730**
- **4x Axle Load Pad Cases**
- **Wireless Indicator: MDC-221-1 #36731**
- **Tow Ball Scale: MDC-216 #36692**

**NWS**  
NUWEIGH

**NUWEIGH® AUSTRALIA**

NATIONAL SERVICE AND SALES NSW | VIC | ACT | QLD | NT | SA | WA | TAS

1300 885 746 | [sales@nuweigh.com.au](mailto:sales@nuweigh.com.au) | [www.nuweigh.com.au](http://www.nuweigh.com.au)

Newcastle Weighing Services EST.1976 | ABN 36 001 344 430

# WIRELESS AXLE LOAD PAD

## MDC-221

# NUWEIGH

2t Capacity

Integrated ramps  
for ease of use

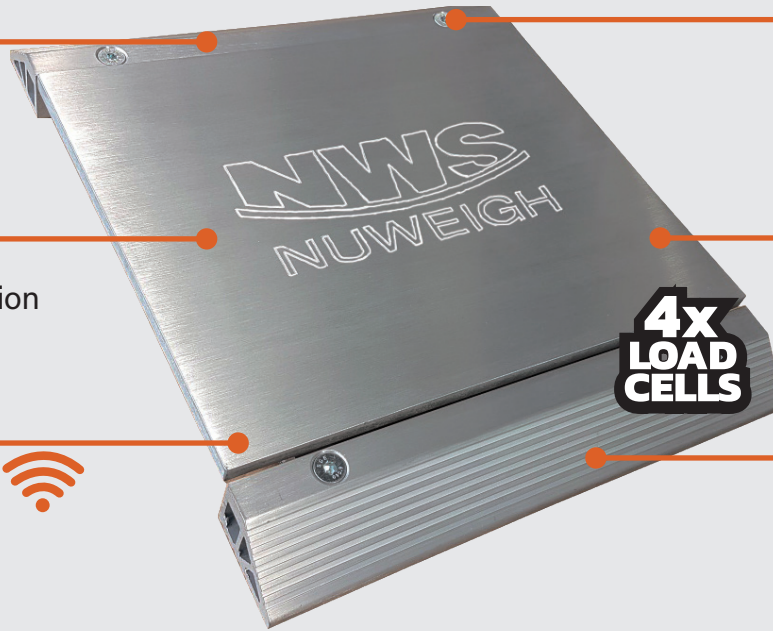
Heavy duty  
Aluminium construction

1kg accuracy

Wireless connection  
within 30m radius



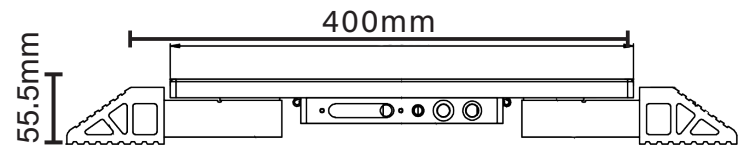
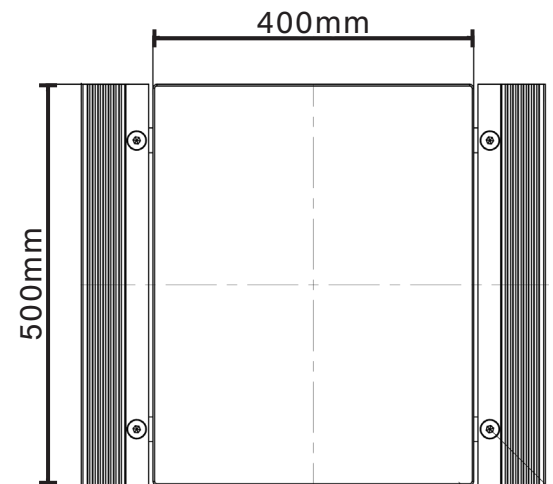
Integrated rechargeable  
battery



### FEATURES

- ▶ Aluminium construction is durable in the toughest conditions
- ▶ Weigh pad capacity 2T x 1kg
- ▶ Designed with 4 load cells for accurate readings
- ▶ Entry/exit ramps for ease of use
- ▶ Integrated rechargeable battery lasts up to 40hrs
- ▶ Protective Aluminium case included with each axle pad

### DIMENSIONS



### SPECIFICATIONS

CAPACITY 2 Tonne

DIVISION 1kg

WEIGH PLATFORM SIZE 500mm x 400mm

WIRELESS RANGE 30m

BATTERY Rechargeable

CHARGER Power pack included

BATTERY OPERATING TIME Approx. 40hr

PRODUCT WEIGHT 18kg




ALUMINIUM  
CARRY CASE  
INCLUDED

# WIRELESS INDICATOR

## MDC-221-I

# NUWEIGH

Portable water resistant high grade ABS housing

Wireless connection within 30m radius 

High definition 7" touch screen display

Standard USB storage output for collection of data

Connect up to 4 axle pads and tow ball weigher

In-built thermal printer

Storage compartment holds stylus



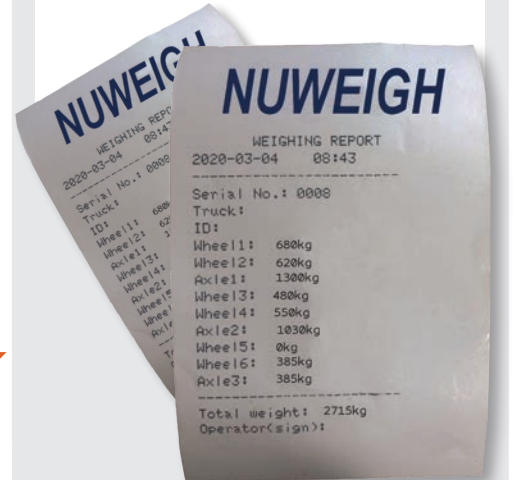
## FEATURES

- ▶ Static system with multi-scale display
- ▶ High speed, low maintenance 57mm Thermal Printer
- ▶ Heavy duty illuminated function buttons on wireless control panel
- ▶ Reliable wireless protocol
- ▶ Connects up to 4 Pads and Tow Ball Weigher
- ▶ Ability to read each wheel, axle and total vehicle weights
- ▶ Data can be exported to text file
- ▶ Up to 40 hrs working time with auto switch off function
- ▶ Document and print all weight data
- ▶ Highly compact and portable device

EVERY SCALE IS SUPPLIED WITH  
A COMPREHENSIVE CALIBRATION  
REPORT SPECIFIC FOR EACH CLIENT

## PRINTING TICKET

In-built thermal printer records name, vehicle ID, individual, gross weight, paired & total axle weights.



# TOW BALL SCALE

## MDC-216

# NUWEIGH

### FEATURES

- ▶ Wireless connection to indicator
- ▶ High tech magnetic activation key
- ▶ Portable and easy to use
- ▶ Adjustable height allows modifications to suit user
- ▶ Quality construction
- ▶ Designed in Australia
- ▶ Industrial rubber handles

### SPECIFICATIONS

|                       |              |
|-----------------------|--------------|
| CAPACITY              | 600kg        |
| DIVISION              | 1kg          |
| WIRELESS RANGE        | 30m          |
| BATTERY               | Rechargeable |
| CHARGER               | 5VDC, 1A     |
| OPERATING TIME        | Approx. 40hr |
| OPERATING TEMPERATURE | -5°C to 40°C |
| PRODUCT WEIGHT        | 22kg         |

### INTELLIGENT POWER MAGNET

Magnet activates transmitter to switch the Tow Ball Weigher on/off.



600kg capacity

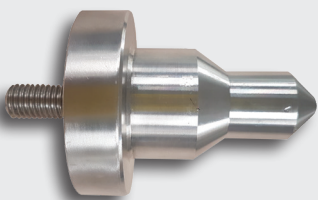
Adjustable height

Powder coated finish

Removable handle creates a compact system for easy transportation

Pneumatic wheels for easy positioning

Alternate Tow Ball Pin Available



DO35 Pin suitable for DO35 styled hitches.

**NWS**  
NUWEIGH

**NUWEIGH® AUSTRALIA**

NATIONAL SERVICE AND SALES NSW | VIC | ACT | QLD | NT | SA | WA | TAS

1300 885 746 | sales@nuweigh.com.au | www.nuweigh.com.au

Newcastle Weighing Services EST.1976 | ABN 36 001 344 430