



"The table is perfect and I am really happy with the quality, material and colour. Athlegen made the whole process incredibly simple and efficient and delivered on time."

CAROLYN AUSTIN

Value-Lift Massage

Designed to fulfil the basic requirements of remedial and relaxation massage. The power-driven height adjustment provides greater access for elderly and incapacitated patients while also achieving an ergonomic working platform for the practitioner.



NAVY SEMI-PU FABRIC



HAZARDOUS MATERIAL FREE (ROHS CERTIFIED)

PRODUCT INFORMATION



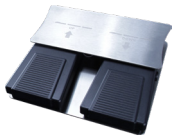
ADJUSTABLE HEAD CRADLE & ARMREST

The integrated gas-assisted head cradle and armrest can be adjusted to your preferred angle for superb patient comfort.



DANISH DESIGNED LINAK ACTUATOR

All Value-Lift tables feature a Danish actuator by Linak which is manufactured to our strict quality control. All products are inspected and checked by Athlegen when they arrive in Australia.



STAINLESS STEEL FOOTSWITCH

The table comes with a sturdy footswitch made with a stainless steel body. Order an additional footswitch to control the height from either side of the table.



TOP SHAPE

The contoured top increases access to the centre of the table. The curved shoulder section allows patients to comfortably access the armrest.



ADJUSTABLE FLOOR-LEVELLING FEET

The table sits securely on four solid supports that can be adjusted for an uneven floor.

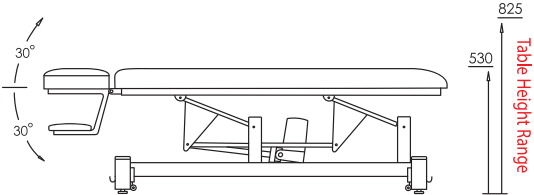
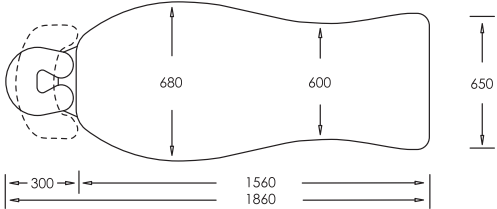


RETRACTABLE WHEELS

The foot operated retractable wheel system allows for easy manoeuvrability when moving the table. When not in use the wheels retract to provide a stable solid base.

KEY SPECIFICATIONS

CUSHIONING	60mm, medium finish
UPHOLSTERY	Semi-PU fabric
ADJUSTMENTS	Head cradle: +30° to -30°
SAFE WORKING LOAD	165kg
MOTOR	Origin: PRC Design: Linak Denmark Lift force: 6,000N Speed: 12mm/sec Height adjustment (min to max): 295mm in 26 seconds Speed test load: 165kg
FOOTSWITCH	Single or optional dual footswitches (one on each side of the table) Origin: PRC Stainless steel Power control
SHIPPING	1910 x 770 x 720mm 74kg
WARRANTY	Structural: 5 years Hardware: 3 years Motor: 2 years Control box: 2 years Footswitch: 2 years Gas strut: 2 years Upholstery: To arrive in perfect condition



All dimensions (shown in mm) and specifications are approximate and are subject to manufacturing tolerances.