

Polywoven

Floor and Carpet Protection

One single flaw is enough to change a 'superior' product to 'rejected'.
That's the reason why the use of Polywoven to protect valuable floor surfaces during construction is popular all over the world.

FEATURES:

- Available width is 1.83 metres
- Available lengths – 100 metres
- Double laminated, woven reinforced
- Water and dust resistant for interior applications
- Anti-slip surface for safety
- Can be used for temporary on-site weather proofing
- Cost effective protection for your floor protection needs

Code: 4275 Polywoven Cover 1.83m x 100m

Can be used in conjunction
with the Carpet Saver and
Floor Saver range of products

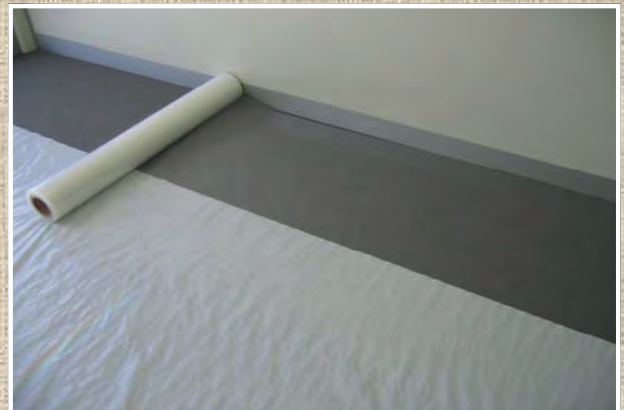
Polywoven

Wide

FEATURES:

- Available size 4m x 50 metres
- Polywoven Wide ensures quick installation
- Polywoven Wide is ideal for Large open areas
- Has the same other features as Polywoven

Code: 4860 Polywoven Cover 2m/4m C/Fold x 50m



Polywoven can be ordered in any roll size and colour (this is subject to minimum quantity orders).
If you have any specific needs, please ask your agent for more details.



AVAILABLE FROM:

GILMORES

J C Gilmore Pty Ltd, 206 Lorimer Street Port Melbourne Vic 3207

Ph: 03 9646 1222 Fax: 03 9646 1922 Email: sales@gilmores.com.au www.gilmores.com.au

Carpet Saver

Carpet Protection

One single flaw is enough to change a "superior" product to "rejected". That's the reason why the application of protective film on carpet, stainless steel, aluminium, pre-coated metal, plastic sheet and profile, ceramic, decorative laminates, and glass...is popular all over the world.

Features

- Available in 500mm, 1000mm and 1500mm widths x 100m lengths
- Reverse rolled self adhesive film allows for fast and effortless installation
- Super high adhesive strength
- Customised adhesive that will not leave any residue glue when removed



INSTRUCTIONS

- 1 Peel off outer dust cover and retain.
- 2 Start by peeling back beginning of roll.
- 3 Position roll where required and roll film out over area needed and cut using sharp knife.
- 4 When finished, re-apply green dust cover for later use.

Floor Saver

Floor and Surface Protection

Features

- Available in 500mm, 1000mm and 1500mm widths x 100m lengths
- Reverse rolled self adhesive film allows for fast and effortless installation
- Super high adhesive strength
- Customised adhesive that will not leave any residue glue when removed



Other protective films are available for the following: windows, aluminium, stainless steel and other general surfaces. If you have any specific surfaces that need protecting, please ask your agent.



AVAILABLE FROM:

GILMORES

J C Gilmore Pty Ltd, 206 Lorimer Street Port Melbourne Vic 3207

Ph: 03 9646 1222 Fax: 03 9646 1922 Email: sales@gilmores.com.au www.gilmores.com.au



Polycushion

FLOORING PROTECTION OF THE HIGHEST QUALITY



Code: 3322 – Polycushion 1.5 x 50m Blue

Polycushion provides the flexibility for today's toughest jobs. Polycushion offers superior strength where maximum protection is required and yet is subtle enough to protect the most delicate of surfaces such as polished timber floors, slate, marble floors or bench tops.

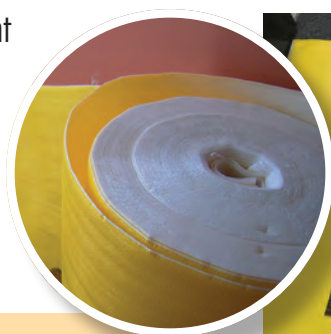
FEATURES

- Double laminate woven prevents tearing
- Foam backed to prevent abrasion
- Water and dust resistant
- Roll size – 1.5m x 50m
- Australian made and 100% recyclable

Construction Multi Guard

SUPERIOR STRENGTH FOR MAXIMUM PROTECTION

Construction Multi Guard provides excellent surface abrasion protection and great cushioning protection for high usage areas. Offering superior strength where maximum protection is required.



FEATURES

- Heavy duty double laminate woven prevents tearing
- 2mm PolyFoam backed to prevent abrasion
- Water and dust resistant
- Roll size – 1.2m x 50m
- Australian made and 100% recyclable

Code: 3872 – Construction Multi Guard 1.2m x 50m Yellow

AVAILABLE FROM: J C Gilmore Pty Ltd, 206 Lorimer Street Port Melbourne Vic 3207
Ph: 03 9646 1222 Fax: 03 9646 1922 Email: mark@gilmores.com.au www.gilmores.com.au

GILMORES



As an extension to our range of floor and carpet protection products we take pleasure in introducing...



Sticky Mat

An innovative multi-layered adhesive mat designed to protect access points to your sites and carpeted areas

- CODE: 3810 – 900 x 1125mm
- CODE: 3730 – 900 x 900mm
- 30 sheets per mat
- sticky back to adhere to floor
- suitable for industrial, commercial and residential sites

**EACH STICKY LAYER
SIMPLY PEELS AWAY
ONCE EXHAUSTED**

AVAILABLE FROM: J C Gilmore Pty Ltd, 206 Lorimer Street Port Melbourne Vic 3207
Ph: 03 9646 1222 Fax: 03 9646 1922 Email: mark@gilmores.com.au www.gilmores.com.au



GILMORES



SOFTWALK & QUIET SILVERTREAD Floating Floor Underlay

Gilmore's range of non cross linked foam underlay has been designed as cushioning for all floating floor applications.

SOFTWALK

Softwalk is made from 2mm EPE foam and laminated with a moisture resistant film that protects existing floor sub-straights from possible moisture and water damage.

CODE: 4827 – Softwalk 1.2m x 50m
CODE: 3637 – Softwalk 1.2m x 25m

QUIET SILVERTREAD

Quiet Silvertread is a premium 3mm EPE foam underlay laminated to a metalised PE film creating superior moisture resistance. In addition to providing a moisture barrier, *Quiet Silvertread* also reduces noise, having a acoustic rating of 64DB(A) or a reduction of 10-12DB(A). CODE: 3609 – Quiet Silvertread 1.2m x 50m
Note: Testing conducted on 170mm thick concrete slab and a white set ceiling below.

SILVERTREAD

Silvertread is a 2mm EPE foam underlay laminated to a metalised PE film creating superior moisture resistance. It is ideal for applications where the flooring sub-straight is located in close proximity to the terrain.

CODE: 3634 – Silvertread 1.2m x 50m

- ✓ Independantly Tested
- ✓ Strata Management Schemes
- ✓ Superior Moisture Resistance
 - ✓ Acoustic Rating
 - ✓ BCA Compliant
 - ✓ Economical

AVAILABLE FROM: J C Gilmore Pty Ltd, 206 Lorimer Street Port Melbourne Vic 3207
Ph: 03 9646 1222 Fax: 03 9646 1922 Email: mark@gilmores.com.au www.gilmores.com.au

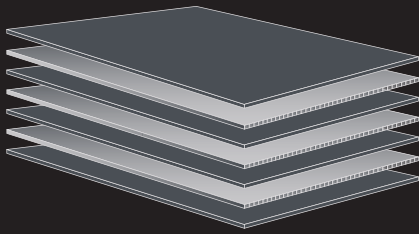


J.C. Gilmore Pty Ltd (Stationery and Packaging)

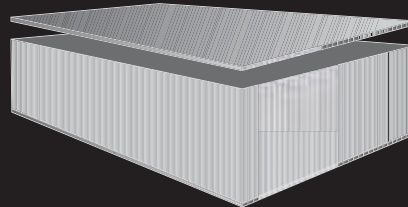
206-208 Lorimer Street, Port Melbourne Vic 3207
Telephone: (03) 9646 1222 Facsimile: (03) 9646 1922
PO Box 5017, Garden City Vic 3207
ABN: 51 004 988 854
sales@gilmores.com.au
www.gilmores.com.au



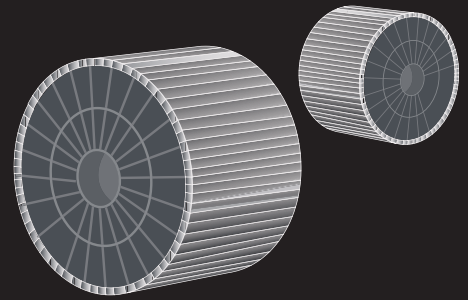
Our Industrial Sheets are ideal for:



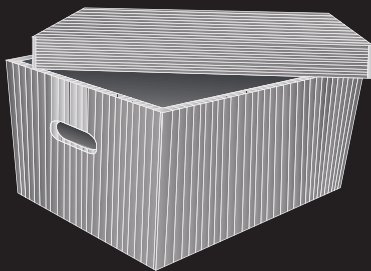
Interleaving



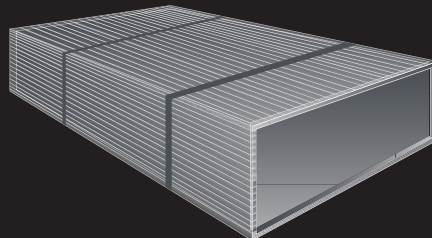
Cover Sheets



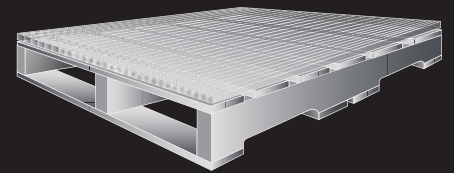
Cable Wraps



Packaging



Protective Wrapping



Pallet Bases

Product Range
2.5mm - to - 10mm thickness
350gsm - to - 2000gsm
Max width: 2400mm



PP
100% Recyclable

Proudly Manufactured in Australia

