

KENSINGTON

Toilet Auxiliary Lift



Zoom
Mobility
EASY LIVING

AUTHORISED ZOOM MOBILITY AFTER SALES SERVICE

We have ensured that your new Zoom Mobility Toilet Lift Seat is ready to deliver! Every member of our Team is dedicated to Customer Satisfaction. By making contact with the following personnel, you will be assured of Prompt and Efficient After Sales Service.

Sales : _____
Service : _____
Spare Parts : _____

DEALER STAMP :

WARNING

Please read the Owner's Manual carefully before operation. If you do not fully understand any part of the Manual, please contact your dealer as soon as possible to avoid any injury or damage from misuse.

PLEASE NOTE : All details contained within this owner's manual are correct as at time of print. Specifications/Recommendations are subject to change without prior notice, should you have any queries please do not hesitate to contact an authorised Zoom Mobility dealer

CONTENTS

PACKING AND MODULE	1
PRODUCT INSTALLATION	2
Installation of Lithium battery	2
Installation of Handrail.....	3
Installation of Backrest	Error! Bookmark not defined.
Installation of Arm Support.....	Error! Bookmark not defined.
Adjustment of Support Feet	Error! Bookmark not defined.
Positioning Seat Lift with the Toilet.....	3
HOW TO USE TOILET LIFT.....	4
Using Manual Lifting Button	4
Using SOS Alarm Button.....	Error! Bookmark not defined.
Using Battery Charger	5
PRODUCT SECIFICATIONS	5
Product Dimensions	5
Technical Specifications	6
MAINTENANCE AND SERVICES.....	6
Equipment Cleaning.....	6
Repair and Services.....	6
WARRANTY TERMS & CONDITIONS	6

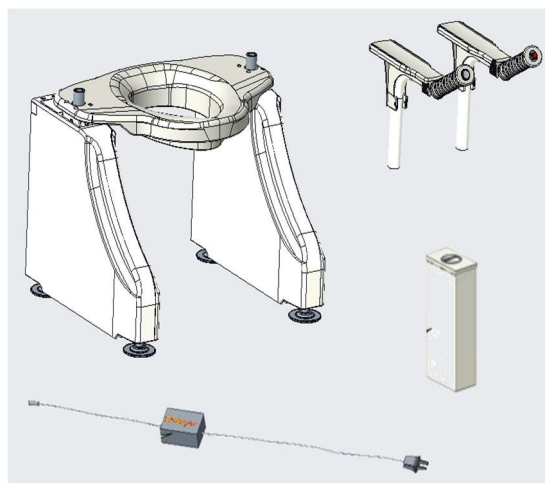
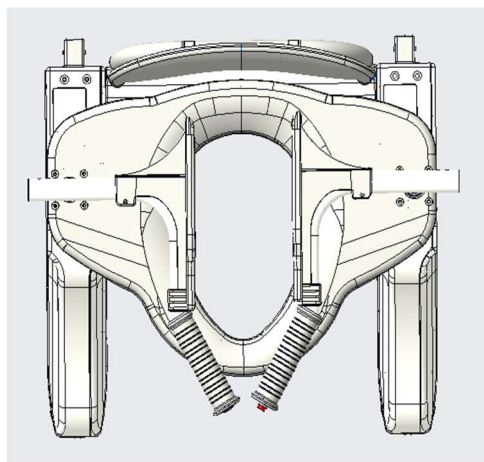
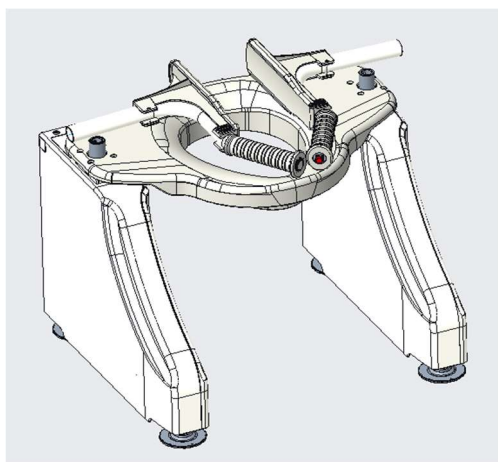
PACKING AND MODULE

Check all components after unpacking, if any missing or damaged, please contact the supplier immediately.

Package list :

- Main part A: toilet lift seat base 1unit
- Handrail B (with control switch);
- Handrail C (with SOS alarming button);
- battery D (one matching cell has been inserted into base main part A);
- Power supply E (For charging battery);
- Qualified Certificate and User Manual

Attention: handrail B and handrail C are optional functions, and the installation position of them (left or right) can be customized.



PRODUCT INSTALLATION

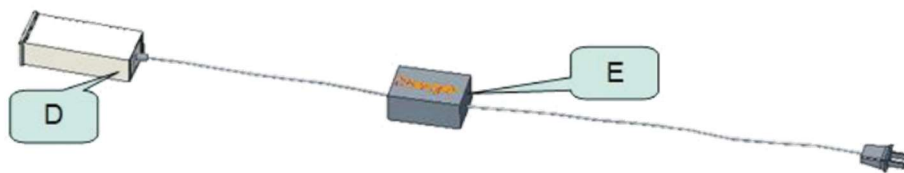
Installation of Lithium battery

When using the battery for the first time or the battery has been unused for a long time, fully charge the battery first. The charging time is around 2-3 hours allowing more than 100 times operating circles.

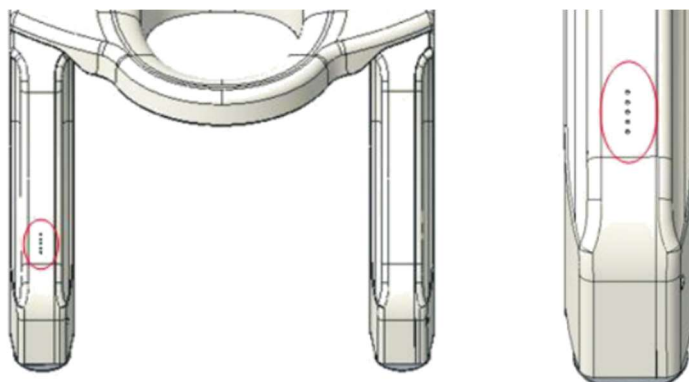
- 1) Insert the charger interface to the charging interface of battery and connect the power supply (Fig 1);
- 2) The indicator of the charger light on and shows red to indicate that it is charging.
- 3) When battery is full, the indicator on the charger turns green;
- 4) Insert the battery to the battery box of the equipment (Fig 2);
- 5) The power display is located in the position shown in Fig 3. To save power, the battery is only displayed during the operation of the device. The display only shows the last lamp, and when it is red, it means that the battery is low and need to be charged immediately.
- 6) Take out the battery after lifting the equipment seat ring, or else the battery may not be taken out normally.

Proposed purchase a spare battery, the battery can be charged to another, alternately use

Attention: Make sure the battery surface is not covered by anything, charging in the bathroom or any moist places is not allowed. Dry hands during charging process. Only charger provided by manufacturer is allowed for the battery charging.



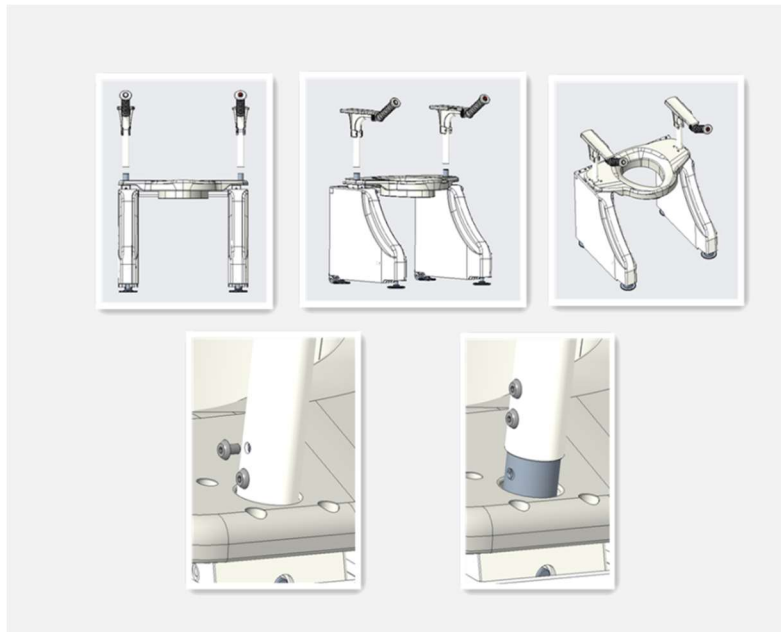
battery charging diagram



Installation of Handrail

Referring to Fig 4, the handrail base is fixed with screws on the base main part A.

Install the handrail with the control switch circuit. Do not pull during the process to avoid cable damage.



Installation of handrail

Attention: Adjust 4 support feet making the equipment to be stable, ensure the ring cover surface is in horizontal position, and make sure the height of the back-edge of seat ring is higher than that of the toilet upper side, or else the equipment may not work normally.

Positioning Seat Lift with the Toilet

- 1) Remove the cover of the toilet and the fixed screws, only remain the toilet ceramic base
- 2) Lift the device (the seat to the lowest state) and move it to the top of the toilet base and slowly lower it to ensure that the device seat does not touch the toilet base.
- 3) Check the position of the equipment on the toilet, avoid the equipment colliding with the toilet in using process.
- 4) for those poor body balance users, the crossbeam of the equipment main part A must be fixed with the toilet by bolts (as shown in Figure 10, Figure 11).

Fixing mode 1: (directly fixed by bolts)

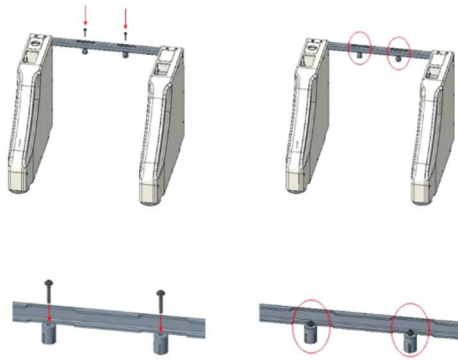


Figure 10 Equipment is fixed with the toilet by bolts

Fixing mode 2: (For special hole position of the toilet, first to adjust the distance by an extension part and then fix it)

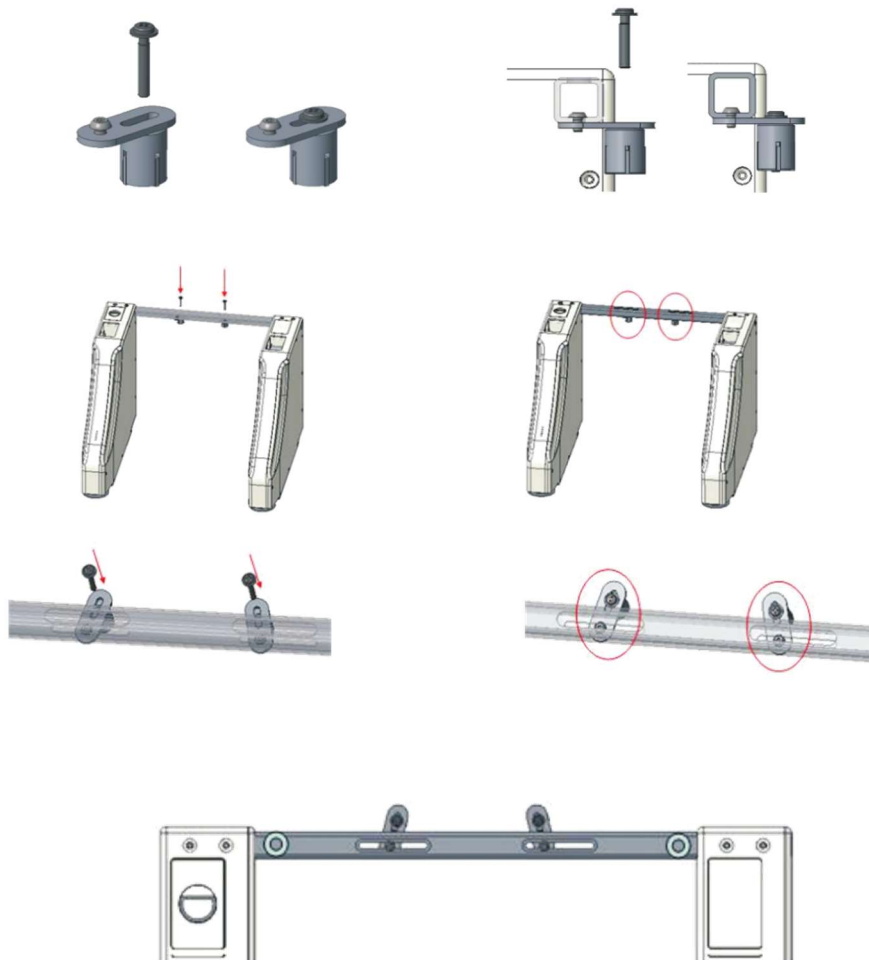


Figure 11 Fix the equipment with the toilet after adjusted the distance by an extension part

HOW TO USE TOILET LIFT

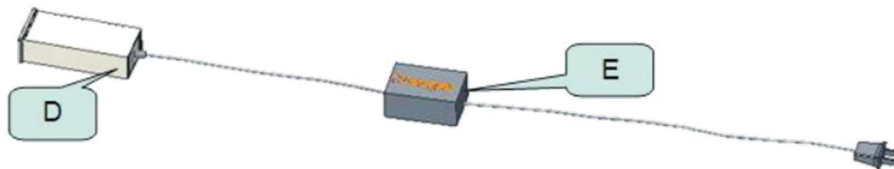
Using Manual Lifting Button

The lifting control switch of the device is located at the front end of the armrest. The user controls the lifting and lowering of the device by continuously pressing the left and right control keys. Release the switch to stop the device.

Figure 14 Use of SOS alarming button

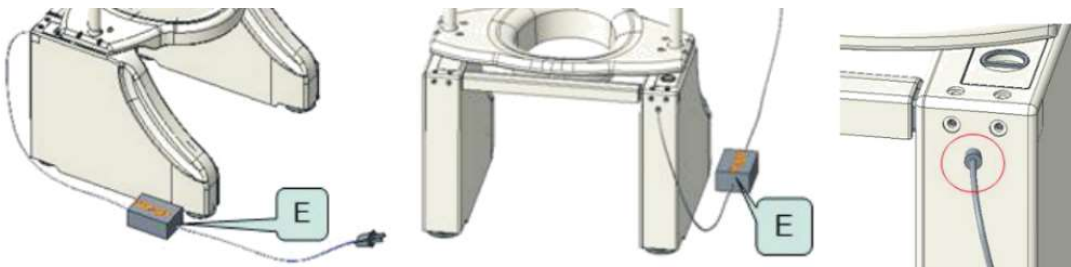
Using Battery Charger

- 1) charge the battery
Insert charger plug to the charging port of battery and connect the power supply (as shown in Figure 16). The charger indicator turns red during charging, it turns green means full battery.



Cell charging diagram

- 2) supply the power the equipment
Insert the charger to the power interface of the equipment and connect the power supply (as shown in Figure 17). battery should be inserted to the Battery box.



supply the power of the equipment

PRODUCT SPECIFICATIONS

Product Dimensions

Product dimensions

- Width: 60.6cm
- Length: 52.5cm
- Height: 79.5cm
- Distance of the handrail: 50.6cm
- Minimum height of seat: 38.6cm

Technical Specifications

Maximum loading: 200kg

Power voltage: 220V

Battery output nominal voltage: Direct current 24V

Working voltage: 24V

Product rated power: 130w

Water-proof grade: IP44

MAINTENANCE AND SERVICES

Equipment Cleaning

- 1) Clean the equipment by gentle, non-abrasiveness sanitary facility, if the equipment is used by multiple persons, the equipment must be disinfected every time;
- 2) The equipment is not water-proof, do not clean it by manual cleaning device, do not spray the equipment or immerse it in water.

Repair and Services

- 1) This product provides worldwide warranty, 1 year of warranty for a whole unit, lifetime maintenance services;
- 2) This equipment (excluding the battery) can be used more than 10,000 times in the case of the user uses and takes good Maintenance according to the User Manual;
- 3) All equipment components are not allowed to repair by user themselves, contact the authorized dealer for overhauling.

Attention: Minors are not allowed to operate or play with this product

WARRANTY TERMS & CONDITIONS

This is to certify that your Zoom Mobility product offers a 12 month Warranty from the date of original purchase. Should a defect or operating fault arise within this period the Dealer, from where the product was originally purchased, should be notified immediately. Failure to register the fault may invalidate the warranty.

The Dealer from where the product was purchased is responsible for any warranty repairs. Zoom Mobility warrants that if a fault occurs within this period due to faulty workmanship or materials that the product will be repaired (or replaced at the Company's discretion) free of charge. Any unauthorised modifications will invalidate the warranty.

Your Zoom Mobility product is fully guaranteed for 12 months from the date of purchase against faults arising due to defects in manufacture or materials. This warranty does not detract from but is in addition to your legal rights.

All electronic parts, including controllers and battery chargers, have a one (1) year warranty. Servicing to any controllers or battery chargers must be carried out by your authorised Zoom Mobility Provider. Any attempt to open or dismantle these items renders the guarantee void on that item.

Not Covered Under Warranty

The guarantee does not extend to those items which may need replacement due to normal wear and tear (upholstery, plastic shrouds, motor brushes, fuses, and batteries), or damage to the product caused by misuse or accident for which Zoom Mobility or its agent cannot be held responsible. This warranty does not include service calls.

Commercial Use

Any Zoom Mobility products used in a commercial application will only be covered by a 6 month warranty from the purchase date. All other conditions in this warranty will apply.

The Product images shown are for illustration purposes only and may not be an exact representation of the product

Zoom Mobility

E A Z Y L I V I N G



Copyright Zoom Mobility
Owner's Manual & Warranty Booklet 2022