

# Wireless Color Doppler Ultrasound Scanner

For bovine, equine, ovine scanning

# S10

BestScan®



## Professional Veterinary Applications

BestScan® S10

Greater accuracy & earlier detection compared. Suitable for Bovine, Equine, Ovine, Swine, widely used in uterus, ovaries, fetal structure, fetal sex, reproductive tract disease, horse's far limb, tendon, bone, eyes, abdomen and chest organs.



## Platform Features

High performance

AI intelligence

High speed

Stability

Security

### Application platform

Android system, Window system, ISO system  
Support platform

### Viewing device

Smart phone; Tablet PC; VR Goggles

### Android




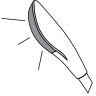

Android 4.4 (API 19) or above, equipped with WI-FI  
802.11n and BLE 4.1 models \* support blue tooth.

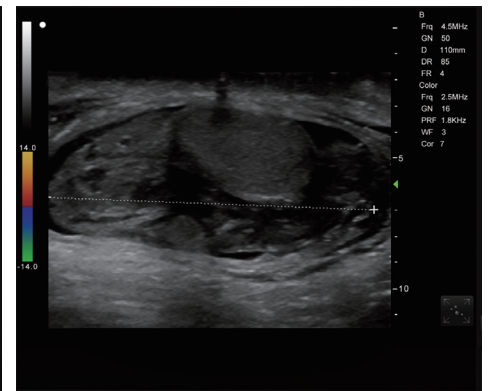
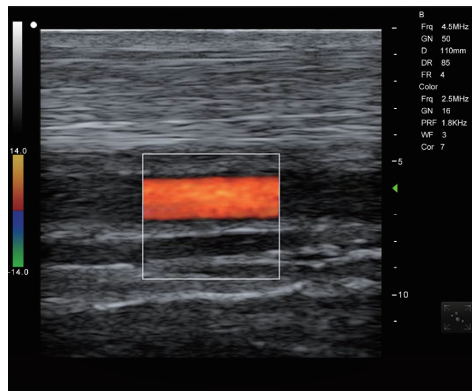
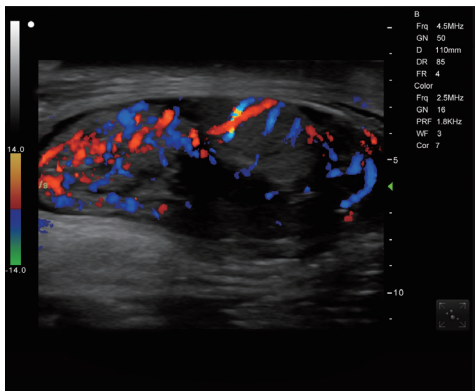
### Multi-language interface

supports 8 languages:  
Chinese-English-Arabic-German-Spanish-French-Italian-Russian

## Unique Design for Veterinary

- ▶ High-end atmosphere, sealed dust and waterproof integrated design, IP67 waterproof performance, From the probe tip to the display, easy to clean.
- ▶ Only 650 g with compact, lightweight design, easy to carry.
- ▶ Double-sided anti-slip for easy grip. ABS+TPU material, strong wear resistance and crash-proof. (drop test of 1 meter) the probe cable is flexible and bendable, suitable for the difficult environment of the farm.
- ▶ Button finger touch recognition for blind operation, Separate freeze button design . 6 function keys adjust the gain, depth, and freeze separately. Sensitive keys and easy to operate.

 <p>HD image</p>	<p>Broad-bandwidth patented probe rectal linear probe and rectal convex, getting images from deeper and wider direction. Excellent image quality helps identification of early pregnancy, fetal gender and uterine diseases easily and early.</p>
 <p>Accurately</p>	<p>Accurately measure blood flow velocity, detecting the hemodynamic status of blood vessels, increasing Independently designed &amp; patented for probes, high quality image performance .</p>
 <p>Penetration</p>	<p>Probe penetrating enhanced, getting images from deeper and wider direction.</p>
 <p>Image field</p>	<p>High sensitivity sensor for better images, unique design to improve the accuracy of late pregnancy diagnosis, especially C-type probe is very light, and the probe has a large open space on one side and a large operable area.</p>
 <p>Frame rate</p>	<p>Image processing with AI, rapid imaging and high quality, 26 frame rate / second image, when fast moving probe, no delay or lag.</p>



# BestScan® S10



The S10 app is available on compatible Android smart devices via scanning code to download





## Fast Connection and Conversion

BestScan® S10



Supports connectivity to multiple smart devices such as PAD, Mobile phone, laptop (Android, IOS, Windows) via WI-FI in 10 S within fast connection; Tablets and TVs can be connected at the same time, Supports USB-DICOM, Wireless printers, HDMI

Power to go, wireless charging, battery built-in integration 12 hours working time, video glasses support external mobile power for up to 4 hours.



Rich measurement software packages: professional vet measurement, Grids for management, measurement software packages to calculate gestational age, expected date of birth, etc.;

## Simple and Fast Work Workflow

Easy to Use

classic 3-step  
workflow

No connection  
password

Second intelligent  
identification password









Easy to operation, classic three-step workflow, no need to connection password, second intelligent identification password

- 1 Prepare machine
- 2 Farm scanning  
Starting up -Open intelligent terminal software - Connect - Start diagnosis.  
Through the tablet and cable box converters to achieve wired multi-screen interaction (up to three screens)
- 3 Clean



## Plenty of Accessories Options

BestScan® S10

	<p><b>I-scan smart goggle</b> Customized Binocular Type HD Wearable Video Glasses</p>		<p><b>Field working bag</b> Storage the probe and its accessories</p>
	<p><b>Rectal Probe Introducer</b> Rounded 85cm,eases your shoulder and arm strain for Fetal Aging, Pregnancy Testing</p>		<p><b>Ipad with S10 software installed</b> Use as a viewing device (manufactured by Apple Inc)</p>
	<p><b>Chest Mount for Tablet</b> To be used in conjunction with your choice of tablet</p>		<p><b>Power bank</b> 10000mAh, 147x71.2x14.2mm, supply power for goggle</p>
	<p><b>Wrist Mount for phone</b> To be used in conjunction with your choice of Phone</p>		<p><b>Mobile Car Charger</b> Battery Charging in the car</p>

### After Sales Service

Wireless upgrades

Full 2-Year Warranty for main unit

An affordable teaching tool  
Professional veterinary technical support



**UTECH Medical Device Pty Ltd.**

[www.utechmd.com.au](http://www.utechmd.com.au)

Email: [info@utechmd.com.au](mailto:info@utechmd.com.au)

