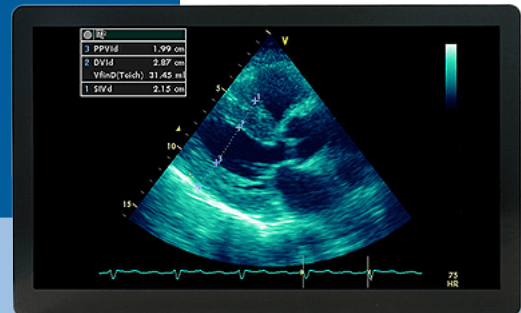


VIEWING CLARITY FOR MEDICAL APPLICATIONS



Medical Grade Monitors

Electronic equipment in clinical settings need to be medical grade in order to provide the right protection for patients. Wamee medical monitors are rated IP65 (front) giving protection against dust and other particulates and meet the EN 60601 standards ensuring electrical and radiation safety. The fanless design is quiet and offers cleaner operation. The monitors are available in varying sizes to cater to a range of end uses including Imaging, Operating Room, ICU and Emergency.

Features:

- IP65 in front & IPx1 whole unit
- WM-24 Dicom compliant
- User modes for different settings
- Viewing angle: 178 Deg (H,V)
- 3-year warranty

SPECIFICATIONS	WM-22	WM-24
Size	21.5"	23.8"
Screen & Housing	True flat with AR. Plastic housing with I/O port cover (PCAP touch optional)	True flat with AR. Plastic housing with I/O port cover (PCAP touch optional)
Resolution	1920x1080	1920x1080
Backlight	LED	LED
View Angle	178 (H,V)	178 (H,V)
Brightness	230 nits (typical)	570 nits (typical)
Colour Gama	NTSC 72%	NTSC 72%
Contrast	3000:1	1000:1
Input Interface	VGA x 1 DVI x 1 HDMI x 1 DisplayPort x 1	VGA x 1 DVI x 1 HDMI x 1 DisplayPort x 1
Output Interface	None	None
OSD Control	Touch Keypad 4key Power/Increase/Decrease/ Menu	Touch Keypad 4key Power/Increase/Decrease/ Menu
DICOM compliant	No	Yes
Auto Luminance Stabiliser	No	No
PiP & PbP	No	No
Power Supply	24V DC medical adapter in 65W	24V DC medical adapter in 65W
Accessory	DP cable x1 ; HDMI cable x 1 ; power cord x 1	DP cable x1 ; HDMI cable x 1 ; power cord x 1
Dimension	521 x 326 x 56.5mm (without base)	587 x 367.5 x 59.5mm (without base)
Weight	5.3kg (without base)	6.8kg (without base)
Certifications & Standards	FCC B, CE(IEC/EN60601-1, ed3.1; IEC/EN60601-1-2, 4.0th)	