

## Scope of Application

PeakSonic BladderView™ M series is a handheld portable bladder volume instrument, which can be applied in the department of Surgery, Emergency, ICU, Obstetric, Gynecology, radiotherapy and nursing home. It can provide the basis for clinical catheterization, evaluate the post-void residual after patient urination, and help to make auxiliary diagnosis on the bladder and kidney diseases. It is also suitable for patients of lower body disability or loss of auto-urination function, to confirm the proper timing of urination.



## Specifications

	M1 2D	M2 3D
Modes of scan	2D scan	3D scan
Probe frequency	2.5MHZ	2.5MHZ
Measure volume	0-999ml	0-999ml
Display & control	Touch screen	Touch screen
Operation Mode	Easy and Expert mode	Easy, Expert & Intelligence mode
Language selection	Multiple language	Multiple language
Battery capacity	2600 mAh	2600 mAh
Print mode	Bluetooth printing	Bluetooth printing
Data transmission	USB to PC	USB to PC
Data storage	Built-in TF card	Built-in TF card
Continuous usage	Continuous scanning time: > 3 hrs and 20 min	Continuous scanning time: > 3 hrs and 20 min
Stand by	Backup power >= 5 hours	Backup power >= 5 hours

Distributed by:

**Interaktiv™ Health**

Ste 17/ 5 Vuko Place Warriewood NSW 2102

TEL : 1300720912

E-mail: [info@interaktivhealth.com.au](mailto:info@interaktivhealth.com.au)

Website: [www.interaktivhealth.com.au](http://www.interaktivhealth.com.au)

# BladderView™ M Series

## Handheld Bladder Volume Instruments



**Easy, Expert and  
Intelligence mode**

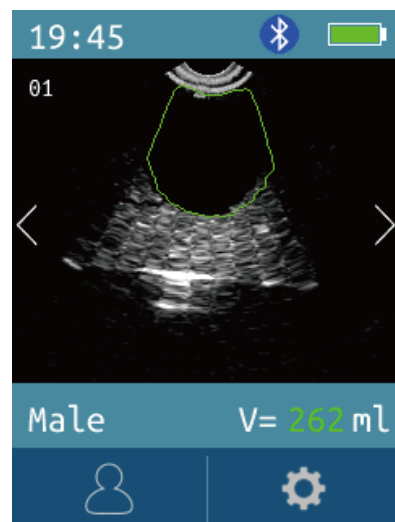
PeakSonic BladderView™ M Series Bladder Volume Instrument is a handheld, portable and non-invasive instrument that quickly, accurately measures urinary bladder volume and post-void residual (PVR) with 2D/3D ultrasound. The system integrates handheld structure, host and probe.

## Features and Benefits

- ⊙ Noninvasive urinary bladder volume measurement.
- ⊙ Modes selection: Easy, Expert Mode and Intelligence Mode(M2/M2-W).
- ⊙ Rapid scanning, measurement result available within a few seconds.
- ⊙ Easy to learn and use. Quick and precise bladder scan can be easily accomplished.
- ⊙ One bladder scan image, patient information and bladder volume value are printable. (M1/M1-W)
- ⊙ Two orthorhombic images, patient information and bladder volume value are printable.(M2/M2-W)
- ⊙ User friendly capacitive touch screen.
- ⊙ Built-in TF storage card.
- ⊙ Prevent CAUTI (Catheter Associated Urinary Tract Infection).
- ⊙ Cost efficiency and save inspection time.
- ⊙ Voice annotation function available.
- ⊙ Multiple language selection.
- ⊙ Integrated fully sealed probe and host with 2.4-inch LCD display and touch screen.
- ⊙ Big data storage space: more than 10,000 cases can be stored.
- ⊙ Chargeable battery, Light-weighted, Easy to carry, Long operation and standby time.
- ⊙ Patient information management software installed for reviewing, editing and printing.
- ⊙ Patient history information review (M1-W/M2-W).
- ⊙ WIFI connection to computer (M1-W/M2-W).
- ⊙ Reduce unnecessary catheterisation.
- ⊙ Identify the different types of urinary incontinence to determine the proper nursing.
- ⊙ Beneficial for post-operative recovery.

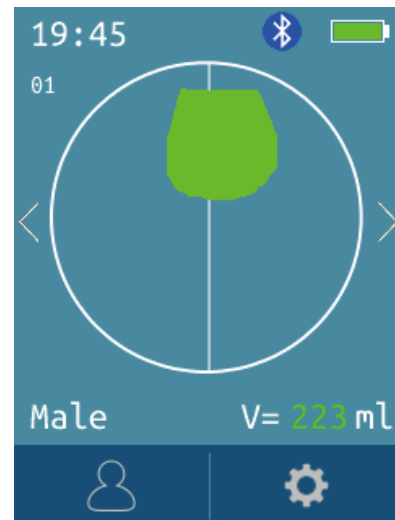
## Mode

Modes selection: Easy, Expert and Intelligence. Expert mode is the default. When performing a pre-scan, the operator will observe the following exam results:



### ⊙ EXPERT MODE

- Display an ultrasonic image
- 12 real time ultrasonic images of the patient bladder will be displayed during scanning.(M2/M2-W)
- 1 real time ultrasonic image of the patient bladder will be displayed during scanning(M1/M1-W)



### ⊙ EASY MODE

- Display a cross-section view of the inspecting bladder.
- 12 cross-section views of patient bladder will be displayed during scanning.(M2/M2-W)
- 1 cross-section view of patient bladder will be displayed during scanning.(M1/M1-W)



### ⊙ INTELLIGENCE MODE (M2 series)

- Display a real-time bladder scan projection position.
- During pre scan, move the probe, centre the real-time bladder scanning projection to the center of the cross. Press scan button while keeping the probe still.
- 12 real time ultrasonic images of the patient bladder will be displayed during scanning.

## Product Model



## Feature Highlights

### ⊙ Intelligent functions

Automatic positioning the bladder



### ⊙ Keyboard operation

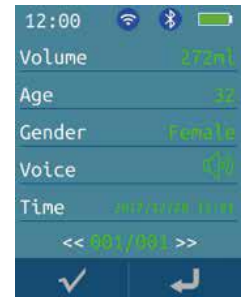
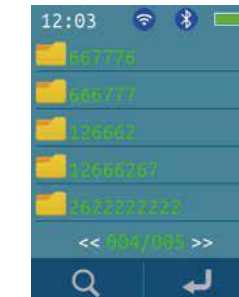
Virtual keyboard and voice annotation functions available for easier and quicker information entry



### ⊙ Unique functions with M1-W/M2-W

WIFI connection to computer

Over 1000 patient history information review



### ⊙ Wireless printing via bluetooth

Printer is optional

