

AGILA TWIN

2976PJE075P54

EAN 4031582302868

Swivel castor with central total lock, housing made of pressed steel, bright zinc plated, blue passivated, double ball bearing swivel head, wheel axle with nut, Stainless Steel balls, plate fitting. Wheel centre made of Polypropylene, Tread: TENTEprene (thermoplastic rubber), grey non-marking, cone ball bearing, stainless



BETTER MOBILITY. BETTER LIFE.



Picture may differ from original product

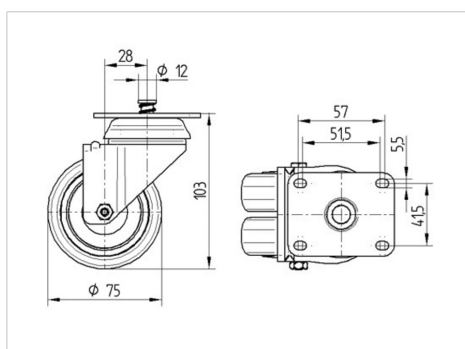
Technical Data

| | |
|------------------------|----------------|
| Wheel diameter | 75 mm |
| Width of Tread | 25 mm |
| Size of Plate | 70 x 55 mm |
| Plate hole centres | 57/51 x 41 mm |
| Plate hole | 5,5 mm |
| Offset | 28 mm |
| Swivel Interference | 131 mm |
| Overall height | 103 mm |
| Temperature | - 20 / + 60 °C |
| Standard | EN 12530 |
| Weight | 0.64 kg |
| Swivel Radius | 65.5 mm |
| Hardness of tread | Shore A 87 |
| Load capacity | 100 kg |
| Load capacity (static) | 200 kg |

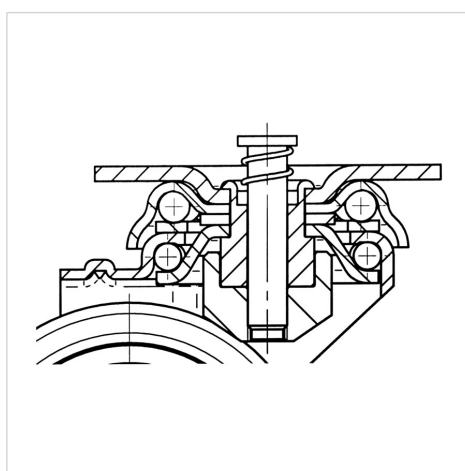
Advantages at a glance

| | |
|----------------------|-----------|
| Roll performance | ● ● ● ○ ○ |
| Movement noise | ● ● ● ○ ○ |
| Attrition | ● ● ● ○ ○ |
| Corrosion resistance | ● ● ● ○ ○ |

Dimensions



Structure & Mounting



AGILA TWIN

2976PJE075P54

EAN 4031582302868



BETTER MOBILITY. BETTER LIFE.

Structure & Mounting

