

# BC900XL BRUSH CHIPPER



**OPERATOR SAFETY.** Combined with the patented bottom feed stop bar is the four-position upper feed stop bar with dual stop positions and forward/reverse feed positions. Mounted over the feed table, it enables the operator to stop the feed rollers and select forward or reverse operations. Dual reset/hold-to-run buttons allow the operator to readily reset the bottom feed stop bar.



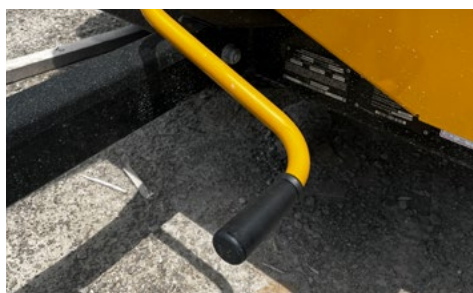
**SMARTFEED.** This patented feed system helps increase operator productivity while reducing strain on vital engine parts. The feed-sensing control system monitors engine rpm and automatically stops and reverses the feed roller when feeding larger hardwood material.



**35-HP (26-kW) GAS ENGINE.** The BC900XL is equipped with a Briggs & Stratton Vanguard gas engine, providing high torque in a compact and lightweight size to process branches and material up to 9 in (22.9 cm) in diameter.



**LARGE RECTANGULAR FEED OPENING.** The large 9 in x 14 in (22.9 cm x 35.6 cm) feed opening helps boost productivity by reducing the need to trim heavily branched material before feeding it into the chipper.



**MANUAL CLUTCH.** Manual clutch engagement transfers belt tension from the disk to the engine smoothly to help prevent premature wear.



**EASE OF SERVICE.** This machine offers direct access to all parts of the chipper for routine maintenance without having to remove any shields. A dripless oil filter and five grease points are provided to reduce work effort and speed up service time.

# BC900XL BRUSH CHIPPER

## GENERAL

Length (feed table up): 140.4 in (356.6 cm)
Length (feed table down): 154.8 in (393.2 cm)
Width: 79.5 in (201.9 cm)
Height: 97 in (246.3 cm)
Weight: 3,060 lb (1,387.9 kg)

## ENGINE

Make/model: Briggs & Stratton Vanguard
Gross horsepower: 35 hp (26 kW)
Max torque: 53 ft-lb (71.9 Nm)
Fuel type: Gasoline
Number of cylinders: 2
Cooling medium: Air

## FEED SYSTEM

Max chipping capacity: 9 in (22.9 cm)
Infeed opening height: 29 in (73.6 cm)
Infeed table width: 48 in (121.9 cm)
Feed roller orientation: Horizontal
Feed hopper height: 32 in (81.3 cm)
Max feed speed: 140 fpm (42.7 m/min)
Feed roller dimensions: 13.5 in long x 15.8 in diameter (34.3 cm x 40.1 cm)

## CUTTING SYSTEM

Disc dimensions: Thickness of 1 in (2.5 cm) and 33 in (83.8 cm) diameter
Disc speed: 1,500 rpm
Knives: Two knives – 5 in x 11.8 in (12.7 x 30 cm) dual-edge reversible
Bedknives: Two with two usable edges and the following size: 5 in x 12.1 in (12.7 cm x 30.7 cm) horizontal and 5 in x 8.8 in (12.7 cm x 22.4 cm) vertical
Engagement system: Manual clutch

## CHASSIS/BRAKES

Frame: 3/16 in x 5-5/8 in (5 mm x 14.3 cm) Z-channel
Tires: ST215/75R14
Axle/suspension: 3,500 lb (1,587.6 kg)
Optional axle/suspension: 3,500 lb (1,587.6 kg) with electric brakes
Hitch: Pintle or ball

## CAPACITIES/ELECTRICAL

Fuel tank: 16 gal (60.6 L)
Hydraulic tank: 6.8 gal (25.7 L)
Max hydraulic flow: 5 gpm (18.9 L/min)
Electrical: 12 V with Group 24 – 580 CCA battery
Lights: LED trailer lights

## OPTIONS

Extended coverage
Special paint
Engine cover
Cone storage mount
Side markers
Planned maintenance
Vermeer Confidence Plus® asset protection program

**NOTES:**

---

---

---

---

Vermeer Corporation reserves the right to make changes in engineering, design and specifications; add improvements; or discontinue manufacturing at any time without notice or obligation. Equipment shown is for illustrative purposes only and may display optional accessories or components specific to their global region. Please contact your local Vermeer dealer for more information on machine specifications. Vermeer, the Vermeer logo, Equipped to Do More and Vermeer Confidence Plus are trademarks of Vermeer Manufacturing Company in the U.S. and/or other countries. Briggs & Stratton and Vanguard are trademarks of Briggs & Stratton Corporation. © 2024 Vermeer Corporation. All Rights Reserved. Printed in the U.S.A. Please recycle.

