

## Standard and Optional Equipment

### Standard Equipment

- Linde digital controller
- German brand motors
- Lead acid battery
- German gear pump
- Integrated steering axle
- Fork landing cushion
- Load backrest
- Pneumatic tires
- Warp-around seat
- Seat safety switch
- Small diameter steering wheel
- Linde single pedal system
- Linde central lever
- 4,3" colour display
- USB charger
- LED headlight and LED rear light
- Vertical battery change

### Optional Equipment

- Twin pedal
- SE tires
- Integrated side shifter
- Hook-on side shifter
- One, two additional hydraulic circuits for attachments
- Flashing beacon
- Blue Spot

## Other Options Available on Request



## ELECTRIC COUNTERBALANCE TRUCK E20B | E25B

CAPACITY 2000 - 2500 KG | SERIES 1293

### Comfort

The spacious and ergonomic design of the operating compartment ensures for comfort while driving. With its central control lever, the mast can be raised, lowered, and tilted simultaneously, while the small diameter steering wheel reduces driver fatigue and shoulder turning.

### Performance

Fast direction change can be achieved within short acceleration times. When fully loaded, this truck can climb 18% at half slope, and travel at a speed of 2 km/h.

### Productivity

Equipped with a digital control system and precise calculation to achieve power on-demand, it improves real-time control-drive and mast operation speed. Using an advanced digital controller, the smart driving system schedules drive and pump motor modules, resulting in high efficiency and less energy consumption.

### Maintenance/Service

With its modular design, it simplifies service processes and reduces the time spent on checking and repairing. An accessible diagnostic app is available on mobile phones to improve troubleshooting convenience. Oils and filters are of higher quality, reducing maintenance costs and frequency of replacement.

## FEATURES

### Linde digital controller

- With the Linde Digital Controller, a driver can choose from three power settings on the display to meet different work conditions



### 4,3" standard display

- Wide screen design allows for clearer visibility
- Display of main fault messages
- The screen display real-time traveling speed, battery status, alarm and operating hours that is easier to scan and understand



### Linde operator compartment

- Ergonomic design for efficient fatigue-free working
- Central control lever for mast lifting, lowering and tilting
- Small diameter steering wheel to reduce shoulder-turning
- Comfortable wrap-in seat
- Foot parking brake

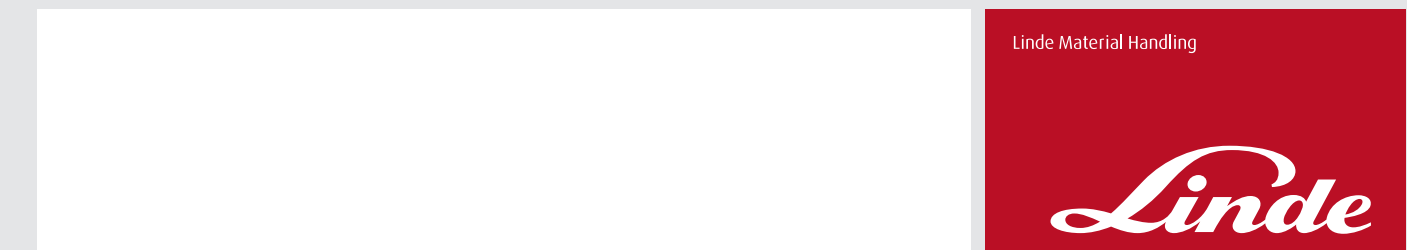


### Clear view mast design

- Optimized visibility through slim mast design
- Sections of mast full load capacity up to maximum lift
- High residual capacity

\*Subject to modification in the interests of progress, illustration and technical details not binding for actual constructions and may show the optional equipments.\*

1293\_E20B-01/E25B-01\_D-01\_202111



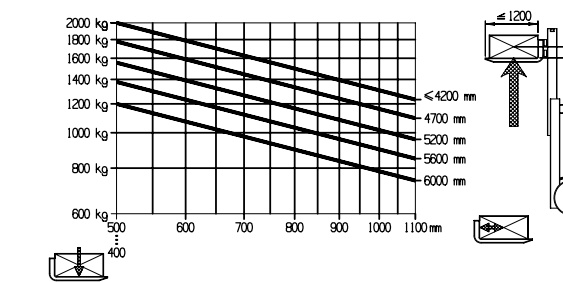
## Technical Data

		LINDE		LINDE	
		E20B-01	E25B-01	E20B-01	E25B-01
Characteristics	1.1	Manufacturer		LINDE	LINDE
	1.21	Model designation		<b>E20B-01</b>	<b>E25B-01</b>
	1.3	Drive: electric (battery type, mains, ...), diesel, petrol, fuel gas		Electric	Electric
	1.4	Operator type: hand, pedestrian, standing, seated, order-picker		Seated	Seated
	1.5	Rated capacity/rated load	Q (t)	2.0	2.5
	1.6	Load centre distance	c (mm)	500	500
	1.7	Load distance, centre of drive axle to fork	x (mm)	464	464
	1.8	Wheelbase	y (mm)	1545	1545
Weights	2.1	Service weight	kg	3660	4140
	2.2	Axle loading, laden front/rear	kg	5008/652	5805/835
	2.3	Axle loading, unladen front/rear	kg	1760/1900	1745/2395
Wheels	3.1	Tyres: solid rubber, superelastic, pneumatic, polyurethane		pneumatic	pneumatic
	3.2	Tyre size, front		23X9-10	23X9-10
	3.3	Tyre size, rear		18x7-8	18x7-8
	3.5	Wheels, number front/rear (x=driven wheels)		2X /2	2X /2
	3.6	Tread, front	b10 (mm)	1040	1040
	3.7	Tread, rear	b11 (mm)	950	950
	Dimensions	4.1	Tilt of mast/fork carriage forward/backward	a/b (°)	6/10
4.2		Height of mast, lowered	h1 (mm)	2070	2068
4.3		Free lift	h2 (mm)	150	150
4.4		Lift	h3 (mm)	3000	3000
4.5		Height of mast, extended	h4 (mm)	4045	4045
4.6		Height of overhead guard (cabin)	h6 (mm)	2150	2150
4.7		Height of seat/stand-on platform	h7 (mm)	1166	1166
4.8		Coupling height	h10 (mm)	660	660
4.19		Overall length	l1 (mm)	3420	3420
4.20		Length to face of forks	l2 (mm)	2420	2420
4.21		Overall width	b1 / b2 (mm)	1265	1265
4.22		Fork dimensions ISO 2331	sxexl (mm)	45x100x1000	45x100x1000
4.23		Fork carriage to ISO 2338, class/type A, B		2A	2A
4.24		Fork-carriage width	b3 (mm)	1040	1040
4.31		Ground clearance, laden, below mast	m1 (mm)	106	102
4.32		Ground clearance, centre of wheelbase	m2 (mm)	120	120
4.33		Aisle width with pallet 1000x1200 across forks	Ast (mm)	3760	3760
4.34		Aisle width with pallet 800x1200 along forks	Ast (mm)	3960	3960
4.35	Turning radius	Wa (mm)	2096	2096	
4.36	Minimum pivoting point distance	b13 (mm)	582	582	
Performances	5.1	Travel speed, laden/unladen	km/h	15/15	15/15
	5.2	Lift speed, laden/unladen	m/s	0.33/0.45	0.28/0.45
	5.3	Lowering speed, laden/unladen	m/s	0.43/0.47	0.43/0.47
	5.4	Max. drawbar pull, laden/unladen	N	11900 / 9600	11700/9500
	5.5	Max. gradeability, laden/unladen	%	18/20	18/20
	5.6	Acceleration time, laden/unladen	s	6.0/5.5	6.3/5.5
	5.7	Service brake		Mechanical hydraulic	Mechanical hydraulic
Drive	6.1	Drive motor rating S2 60 min	kW	10.2	10.2
	6.2	Lift motor rating at 53 15%	kW	11.5	11.5
	6.3	Battery according to DIN 43531/35/36 A, B, C, no		DIN 43536 A	DIN 43536 A
	6.4	Battery voltage/nominal capacity K5	V/Ah	80/360	80/360
	6.5	Battery weight (E)	kg	990	990
Others	7.1	Operating pressure for attachments	bar	145	170
	7.2	Oil flow for attachments	l/min	24	24
	7.3	Sound pressure level at the driver's seat	dB(A)	65	65

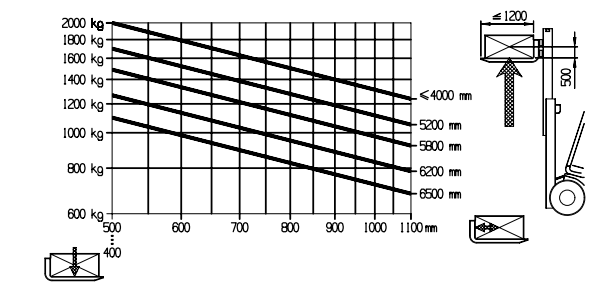
Figures for standard version may vary when options equipment is fitted

## Lifting Capacity Diagram for Standard/Duplex Mast/ Triplex Mast with Standard Fork Carriage

E20B-01

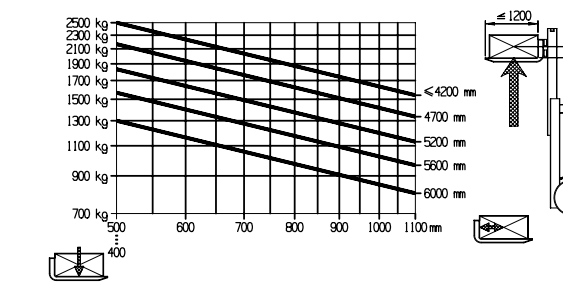


Standard, Duplex mast

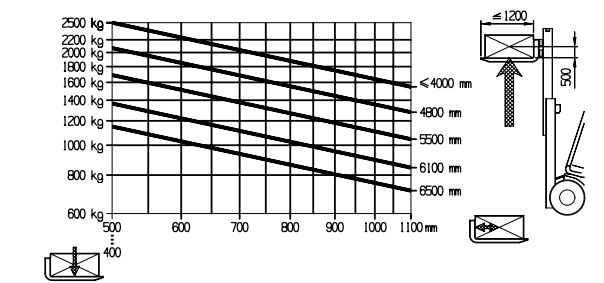


Triplex mast

E25B-01



Standard, Duplex mast



Triplex mast

## Mast Datasheet (in: mm)

Standard masts (mm)		E20/25B-01							
Lift height	h3	3000	3300	3500	3600	4000	4500	5000	5500
Retracted height	h1	2070	2220	2320	2370	2620	2870	3120	3420
Free lift	h2	150	150	150	150	150	150	150	150
Height of overall at max. lift	h4	4045	4345	4545	4645	5045	5545	6045	6545

Duplex masts (mm)		E20/25B-01				
Lift height	h3	3000	3300	3500	4000	4500
Retracted height (Height of mast, lowered)	h1	2036	2186	2286	2586	2836
Free lift	h2	1385	1535	1635	1935	2185
Height overall at max. lift	h4	4045	4345	4545	5045	5545

Triplex masts (mm)		E20/25B-01							
Lift height	h3	4100	4550	4650	5000	5250	5500	6000	6500
Retracted height (Height of mast, lowered)	h1	1986	2186	2186	2336	2486	2586	2836	3036
Free lift	h2	1335	1535	1535	1685	1835	1935	2185	2385
Height overall at max. lift	h4	5145	5595	5695	6045	6295	6545	7045	7545