

ROLL-A-GRILLES

Roll-A-Grilles

The Industrial Grille-type Aluminium Shutters have a sleek, easy-to-operate aluminium curtain, specifically designed from aluminium extrusion for a high level of security. They are a cost-effective product designed to maintain the feeling of openness between internal and external spaces, where ventilation or visual product branding is needed.



STANDARD FEATURES

- Supplied standard in a clear anodised finish (Matt Natural), but can be powder coated as an optional extra
- Sturdy T-Rail aluminium bottom rail providing additional strength
- 100mm x 35mm aluminium door tracks can be mounted between wall fix or behind wall fix
- May be fitted with central mounted locking mechanism within the bottom rail. Locking mechanism is generally concealed

19

19mm ALUMINIUM EXTRUSION TUBING

DOOR TRACKS: 105mm x 40mm

Constructed from 19mm aluminium extrusion tubing with 35mm links creating a symmetrical brick-like pattern

BEST FOR

Arcades, sporting complexes, clubs, bars, counter tops and car park common entry

OPENINGS

range from 100mm to 1000mm (High) and up to 8000mm (Wide)

ROLLER DRUM

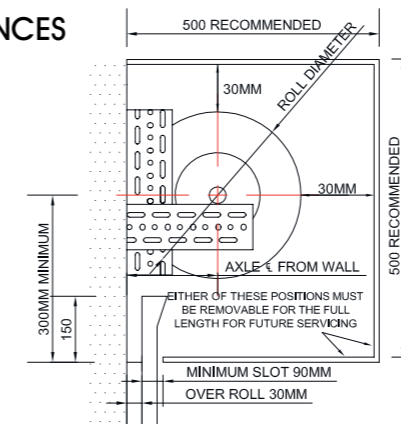
165mm or 229mm spiral drum rotating on 34mm heavy duty shaft fitted with high speed industrial bearing and helical springs

Curtain has 19mm aluminium extrusion tubing at 75mm centres interconnected with 35mm x 3mm links spaced at 50mm centres

RECOMMENDED OPENER

Central Motor, Axess Pro 3300 or 3100, GFA Springless

CLEARANCES



DIMENSIONS

DOOR HEIGHT	DRUM 165MM		DRUM 229MM	
	ROLL DIAMETER	CENTRE AXLE FROM WALL	ROLL DIAMETER	CENTRE AXLE FROM WALL
1000	326	173	326	173
1500	326	173	378	199
2000	330	175	394	207
2500	364	192	398	209
3000	378	200	434	227
3500	415	218	448	234
4000	435	228	453	237
4500	460	240	470	245

