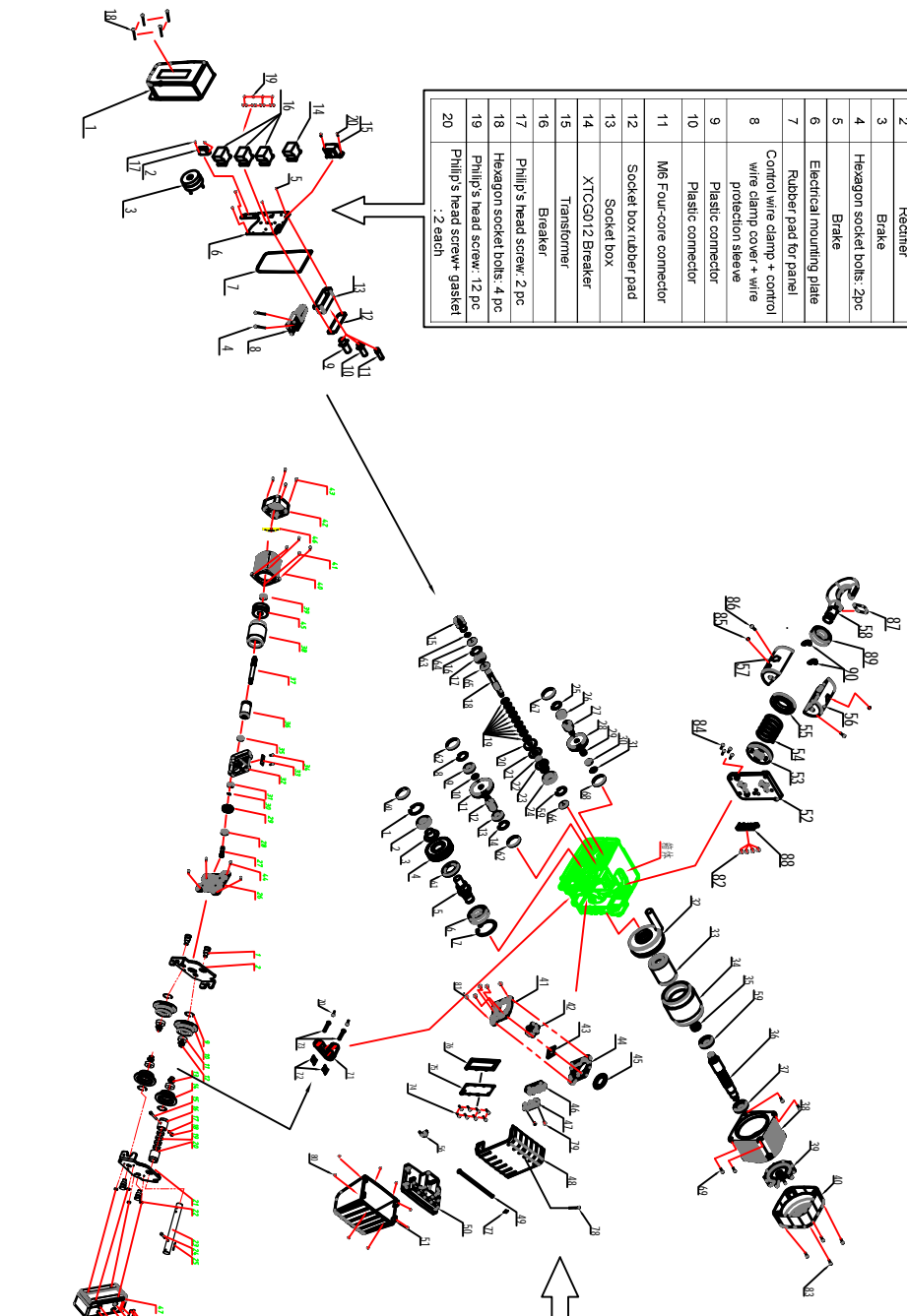


1	Electrical box cover
2	Rectifier
3	Brake
4	Hexagon socket bolts: 2pc
5	Brake
6	Electrical mounting plate
7	Rubber pad for panel
8	Control wire clamp + control wire clamp cover + wire protection sleeve
9	Plastic connector
10	Plastic connector
11	M6 Four-core connector
12	Socket box rubber pad
13	Socket box
14	XTCG012 Breaker
15	Transformer
16	Breaker
17	Phillip's head screw: 2 pc
18	Hexagon socket bolts: 4 pc
19	Phillip's head screw: 12 pc
20	Phillip's head screw+ gasket :2 each



60	62*7 End cover oil seal	30	6001 Bearing	90	1T Lower hook spring safety
61	TC Oil seal	31	q28 Hole circlip	1	q62 hole circlip
62	47*7 End cover oil seal	32	1T Dust Cover	2	6206 Bearing
63	q15 Circlip for shaft, type A	33	1T Motor rotor	3	Circlip for spline shaft
64	42*30*7 TC Oil seal	34	1T Motor stator	4	Output spline gear
65	18*35*7 TC Oil seal	35	Motor shaft retaining ring	5	Sprocket output shaft
66	35*62*12 TC Oil seal	36	1T Motor shaft	6	6308 Bearing
67	42*7 End cover oil seal	37	6206 Bearing	7	q90 Hole with elastic ring (German standard)
68	28*7 End cover oil seal	38	Motor Cover	8	q47 hole circlip
69	Hexagon socket screw: 4 pc	39	Motor fan	9	6303 Bearing
70	Hexagon socket screw: 2 pc	40	Motor back cover	10	Retaining ring (3.3mm thick)
71	1T Upper filling ring	41	Chain guide(A)	11	Gear
72	1T Pin safety plate	42	Chain sprocket	12	Gear shaft
73	1T Upper filling ring fixing pin	43	plate for Chain guide	13	6303 Bearing
74	Hexagon socket screw: 8 pc	44	Chain guide(E)	14	q47 hole circlip
75	Gear box cover	45	Chain guide dust cover	15	1T Brake core
76	Gear box cover rubber pad	46	1T Crimping seat	16	q47 hole circlip
77	Chain bag fixing pin	47	1T Crimping seat	17	18A232 Bearing
78	Hexagon socket screw: 1 pc	48	cover	18	Output gear shaft
79	Phillips screw: 2 pc	49	Chain bag fixing pin	19	1T Disc spring washer
80	Rivets: 8 pc	50	Chain bag cover	20	1T Brake plate flange
81	Self-tapping screws: 5 pc	51	1T Chain bag	21	Brake plate
82	Cross self-tapping screws: 4 pc	52	Chain guide	22	6901 Z Bearing
83	Hexagon socket screw: 4 pc	53	1T Spring upper plate	23	Internal gear coupling
84	Hexagon socket screw: 4 pc	54	1T Upper limit spring	24	7007 A/C Bearing
85	Hexagon socket screw: 2 pc	55	1T Spring lower plate	25	q42 hole circlip
86	Nut: 2 pc	56	1T Lower hook shell	26	6004 Bearing
87	1T Bottom block spring safety plate	57	1T Lower hook shell	27	1T One section gear shaft
88	1T Limit switch seal + limit switch + 4-core aviation plug	58	1T Lower hook head	28	1T One section gear
89	511105 Thrust ball bearing	59	6008 Bearing	29	Retaining ring (thickness 14.1)

28	1T Hydrodynamic bearing	56	2-M4*10 Hexagonal cylindrical head screw
29	Trolley gear shaft	57	Internal gear
30	Trolley pin	58	Trolley pin
31	4.35 S911 pin	59	Trolley pin
32	Trolley shaft fixing pin	60	44x57.10 Hexagonal cylindrical head screw
33	Trolley shaft	61	2-#5216 Waterproof connector
34	Wiring cover gasket	62	2-#5216 Waterproof connector
35	Trolley sub-panel	63	44x57.10 Hexagonal cylindrical head screw
36	Trolley shaft adjustment ring	64	Trolley junction box
37	M20 Non-Metallic Insert Hexagon Lock Nut	65	Brake flange
38	M20 Spring washer	66	Brake
39	Trolley mechnical plating	67	Hexagonal cylindrical head screw
40	Hexagon bolt	68	Hexagonal cylindrical head screw
41	Trolley wheel	69	Trolley fan cover
42	Trolley wheel washers	70	44x57.10 Hexagonal cylindrical head screw
43	Shaft retaining ring	71	Trolley motor housing
44	6302 Hydrodynamic bearing	72	6003 Hydrodynamic bearing
45	42 Hole circlip	73	Trolley motor shaft
46	Hexagonal cylindrical head screw	74	6003 Hydrodynamic bearing
47	Resistance	75	Hexagonal cylindrical head screw
48	Hexagonal cylindrical head screw	76	Trolley gearbox
49	Hexagonal cylindrical head screw	77	Trolley gear
50	Hexagonal cylindrical head screw	78	1T Shaft retaining ring
51	Hexagonal cylindrical head screw	79	1T Trolley gear